

# RESPIRATORY VIRUS DETECTION REPORT

October 29 to November 4, 2023  
(Surveillance Week 2023-44)



Please note that the Respiratory Virus Detection Surveillance System (RVDSS) is a sentinel laboratory surveillance system that does not capture all respiratory virus testing performed in Canada; differences may exist between the data presented in this report and provincial/territorial epidemiological reports. SARS-CoV-2 laboratory data is included in this report to facilitate the comparison of positivity with other respiratory viruses. Interpretation should be made with caution as testing practices differ among viruses.

For additional SARS-CoV-2 surveillance information, please refer to the [COVID-19 epidemiology update](#).

## Overall Summary

In week 44 (week ending November 4, 2023) in Canada, participating RVDSS laboratories reported 6,712 detections of SARS-CoV-2 from 37,956 tests (17.7% positive). Among non-SARS-CoV-2 respiratory viruses, where test volumes are lower (range of 7,353 to 24,183 tests), activity of RSV is low but increasing.

- Over the past four surveillance weeks, national SARS-CoV-2 percent positivity has remained stable.
- Activity of RSV is increasing and slightly above expected levels for this time of year (924 detections; 4.1% positive) but overall remains low. RSV activity is expected to increase at this time of year.
- Influenza is showing early signs of increasing activity, but is within expected levels for this time of year as overall activity remains low and below seasonal threshold levels (544 detections; 2.3% positive). Influenza activity is expected to increase at this time of year.
- Activity of all other non-SARS-CoV-2 respiratory viruses is low and near expected levels typical of this time of year.
- 35/35 sentinel laboratories reported surveillance data

## Abbreviations

ADV: Adenovirus

Atl: Atlantic Canada

BC: British Columbia

Can: Canada

EORLA: Eastern Ontario Regional Laboratory Association

EV/RV: Enterovirus/Rhinovirus

Flu: Influenza

Flu A(H1N1)pdm09: Influenza A(H1N1)pdm09

Flu A(H3): Influenza A(H3N2)

Flu A (UnS): Influenza A(Unsubtyped)

HCoV: Human coronavirus 229E/OC43/NL63/HKU1

HMPV: Human metapneumovirus

HPIV: Human parainfluenza virus

HSC: Health Sciences Centre

N.C.: Data not collected

N.R.: Data not reported for current week

ON: Ontario

PR: Prairies

P.H.O.L.: Public Health Ontario Laboratory

QC: Quebec

RSV: Respiratory syncytial virus

RVDSS: Respiratory Virus Detection Surveillance System

SARS-CoV-2: Severe acute respiratory syndrome coronavirus 2

Terr: Territories of Canada

UHN: University Health Network

© His Majesty the King in Right of Canada, as represented by the Minister of Health, 2021

ISSN: 2564-2359 | Cat.: HP38-7E-PDF | Pub.: 210284

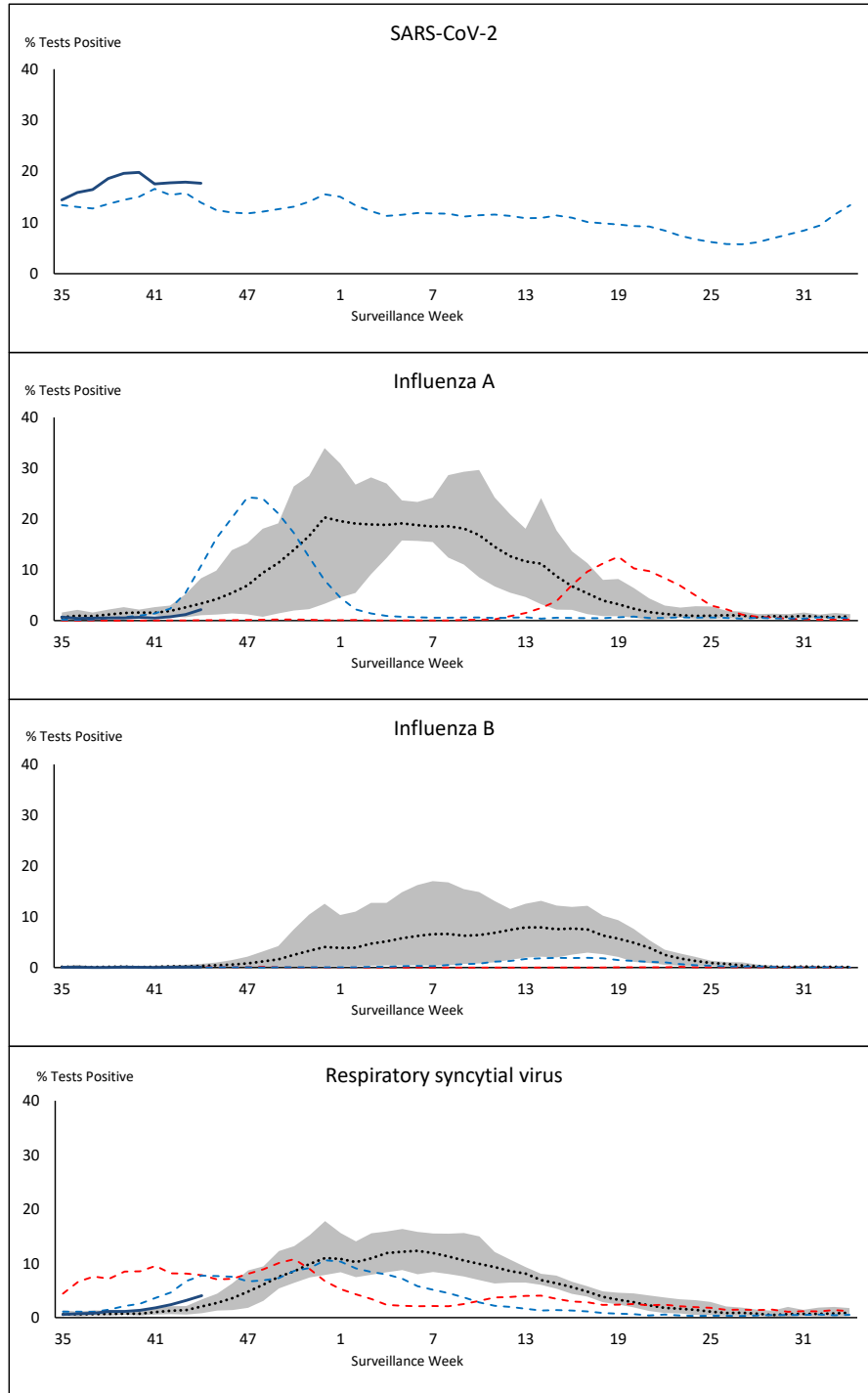


Public Health  
Agency of Canada

Agence de la santé  
publique du Canada

Canada

**Figure 1: Positive severe acute respiratory syndrome coronavirus 2 (SARS-CoV-2), influenza, and respiratory syncytial virus tests (%) reported by participating laboratories in Canada by surveillance week compared to average and range from 2014-2015 to 2019-2020 season**



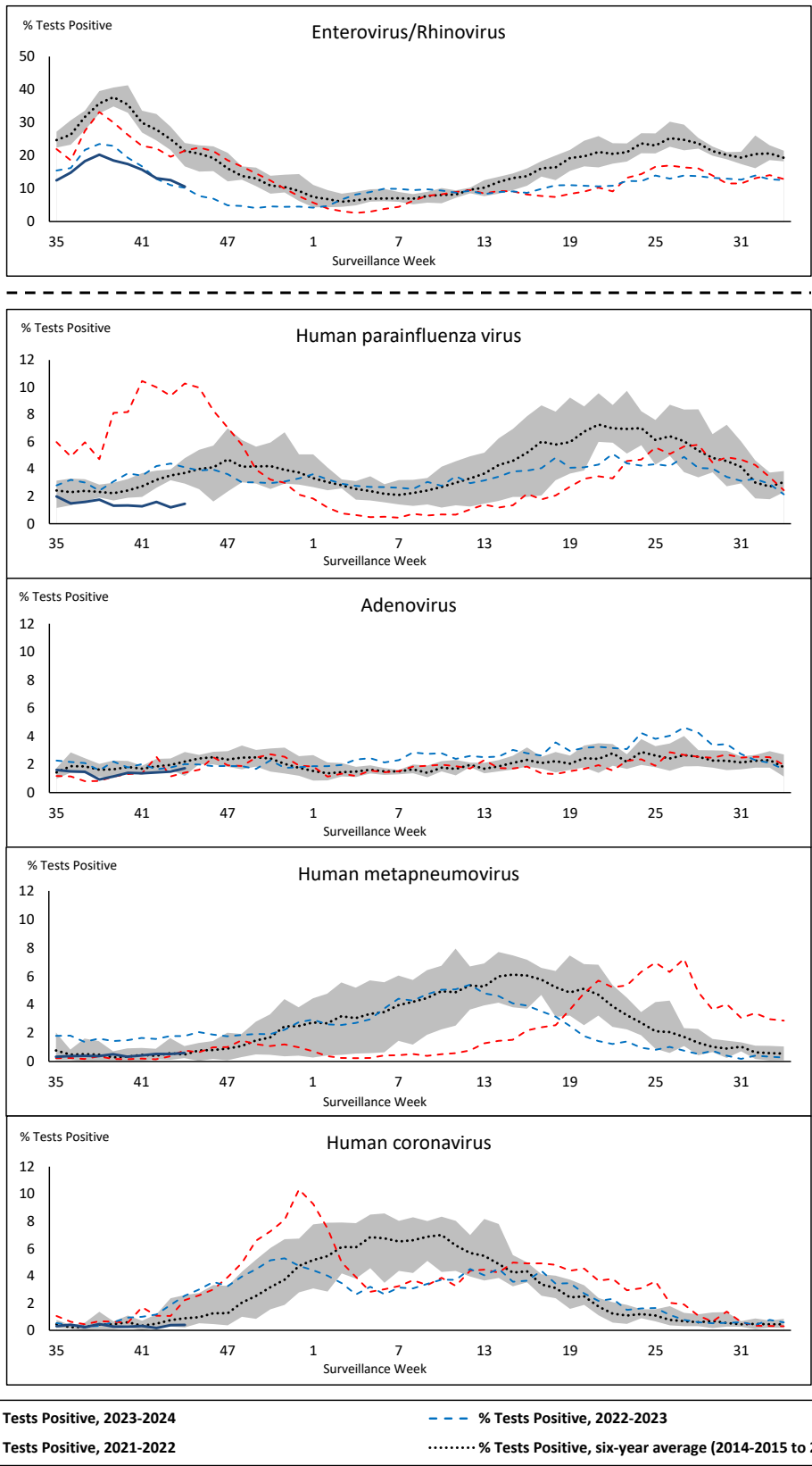
Shaded area represents the maximum and minimum % of respiratory virus tests positive reported by week from seasons 2014-2015 to 2019-2020

Note: Changes to testing practices during the COVID-19 pandemic may cause substantial changes to indicator estimates from previous years. Collection of laboratory testing practice meta-data to understand these changes is ongoing. Interpret trends with caution.

Note: SARS-CoV-2 surveillance was integrated into RVDSS at the beginning of the 2022-2023 season; no prior data is available for historical comparison.

Note: Data from week 11 of the 2019-2020 season onwards are excluded from the historical comparison due to the COVID-19 pandemic.

**Figure 2: Positive tests (%) of other respiratory viruses reported by participating laboratories in Canada by surveillance week compared to average and range from 2014-2015 to 2019-2020 season**



Shaded area represents the maximum and minimum % of respiratory virus tests positive reported by week from seasons 2014-2015 to 2019-2020

Note: Changes to testing practices during the COVID-19 pandemic may cause substantial changes to indicator estimates from previous years. Collection of laboratory testing practice meta-data to understand these changes is ongoing. Interpret trends with caution.

Note: Data from week 11 of the 2019-2020 season onwards are excluded from the historical comparison due to the COVID-19 pandemic.

Note: % Tests Positive scale changes across the dashed line

**Table 1: Respiratory virus detections for the week ending November 4, 2023 (surveillance week 2023-44)**

Reporting Laboratory	SARS-CoV-2 Tested	SARS-CoV-2 Positive	Flu Tested	A(H1)pdm09 Positive	A(H3) Positive	A(UnS) Positive	Total Flu A Positive	Total Flu B Positive	RSV Tested	RSV Positive	HPIV Tested	HPIV 1 Positive	HPIV 2 Positive	HPIV 3 Positive	HPIV 4 Positive	Other HPIV Positive	ADV Tested	ADV Positive	HMPV Tested	HMPV Positive	EV/RV Tested	EV/RV Positive	HCoV Tested	HCoV Positive	
Newfoundland	544	93	351	0	0	15	15	0	351	3	351	1	2	1	1	0	351	7	351	1	351	38	351	1	
Prince Edward Island	175	26	74	0	0	0	0	0	74	1	16	0	0	0	1	0	16	0	16	0	16	5	0	0	
Nova Scotia	1328	290	660	0	0	6	6	1	660	21	37	1	0	0	2	0	37	2	37	0	37	10	37	0	
New Brunswick	918	122	829	2	1	0	3	0	819	16	88	0	0	0	2	0	88	1	88	0	88	31	88	0	
<b>Atlantic</b>	<b>2965</b>	<b>531</b>	<b>1914</b>	<b>2</b>	<b>1</b>	<b>21</b>	<b>24</b>	<b>1</b>	<b>1904</b>	<b>41</b>	<b>492</b>	<b>2</b>	<b>2</b>	<b>1</b>	<b>6</b>	<b>0</b>	<b>492</b>	<b>10</b>	<b>492</b>	<b>1</b>	<b>492</b>	<b>84</b>	<b>476</b>	<b>1</b>	
Région Nord-Est	1737	387	1239	0	0	0	0	0	472	14	58	1	1	0	1	0	58	4	57	2	N.C.	N.C.	58	0	
Québec-Chaudière-Appalaches	2032	309	687	0	0	0	0	1	692	54	273	1	0	0	0	0	291	17	273	7	N.C.	N.C.	273	0	
Centre-du-Québec	2152	429	509	0	0	3	3	0	507	39	38	2	1	2	0	0	38	2	38	0	N.C.	N.C.	38	0	
Montréal-Laval	2636	361	1322	0	0	9	9	1	1159	96	651	5	3	4	1	0	651	17	655	10	N.C.	N.C.	651	3	
Ouest du Québec	1629	383	633	0	0	5	5	0	630	42	25	0	0	0	0	0	25	1	25	0	N.C.	N.C.	25	0	
Montérégie	1617	295	912	0	0	18	18	2	878	48	4	0	0	0	0	0	4	1	4	0	N.C.	N.C.	4	0	
<b>Province of Québec</b>	<b>11803</b>	<b>2164</b>	<b>5302</b>	<b>0</b>	<b>0</b>	<b>35</b>	<b>35</b>	<b>4</b>	<b>4338</b>	<b>293</b>	<b>1049</b>	<b>9</b>	<b>5</b>	<b>6</b>	<b>2</b>	<b>0</b>	<b>1067</b>	<b>42</b>	<b>1052</b>	<b>19</b>	<b>N.C.</b>	<b>N.C.</b>	<b>1049</b>	<b>3</b>	
P.H.O.L. - Ottawa	348	119	221	0	0	0	0	0	221	6	132	0	0	0	0	1	132	0	132	0	132	22	132	10	
EORLA	1483	170	564	0	0	1	1	0	564	75	36	0	0	0	0	0	36	0	36	0	36	8	36	0	
P.H.O.L. - Kingston	193	83	101	0	0	0	0	0	101	5	72	0	0	0	0	1	72	2	72	0	72	10	72	0	
UHN / Mount Sinai Hospital	1020	79	640	0	0	1	1	1	640	9	24	0	0	0	0	0	24	0	24	0	24	0	24	0	
P.H.O.L. - Toronto	515	202	994	6	3	0	6	1	994	32	895	0	0	0	0	21	895	11	895	6	895	91	895	1	
Sick Kids Hospital - Toronto	160	14	115	0	1	1	2	0	115	23	115	1	0	1	1	0	115	5	115	0	115	38	115	0	
Shared Hospital Laboratory	1443	145	1443	13	2	2	17	0	1444	78	1447	0	0	0	0	5	1447	13	1450	0	1450	56	1425	3	
P.H.O.L. - Sault Ste. Marie	28	20	9	0	0	0	0	0	9	0	8	0	0	0	0	0	8	0	8	0	8	1	8	0	
P.H.O.L. - Timmins	55	31	43	0	0	0	0	0	43	0	28	0	0	0	0	1	28	1	28	0	28	5	28	0	
St. Joseph's - London	817	131	329	0	0	2	2	1	329	10	109	0	0	0	0	0	109	0	109	1	109	15	109	1	
P.H.O.L. - London	485	192	365	3	1	0	0	0	365	22	293	0	0	0	0	9	293	2	293	0	293	33	293	0	
P.H.O.L. - Orillia	19	4	61	1	0	0	1	0	61	8	61	0	0	0	0	2	61	3	61	0	61	11	61	0	
P.H.O.L. - Thunder Bay	47	22	20	0	0	0	0	0	20	0	14	0	0	0	0	0	14	0	14	0	14	2	14	0	
P.H.O.L. - Sudbury	63	39	39	0	0	0	0	0	39	0	14	0	0	0	0	1	14	0	14	0	14	1	14	0	
P.H.O.L. - Hamilton	197	59	169	1	0	0	0	0	169	6	131	0	0	0	0	1	131	3	131	1	131	14	131	0	
P.H.O.L. - Peterborough	58	33	67	0	0	0	0	0	67	16	54	0	0	0	0	0	54	1	54	0	54	7	54	0	
St. Joseph's - Hamilton	1902	177	1685	0	0	7	7	1	1685	114	1685	0	0	5	0	0	1685	12	1685	1	1685	114	0	0	
Sault Area Hospital	229	28	133	1	0	0	1	0	133	2	96	0	0	0	2	0	96	1	96	0	96	10	96	0	
<b>Province of Ontario</b>	<b>9062</b>	<b>1548</b>	<b>6998</b>	<b>25</b>	<b>7</b>	<b>14</b>	<b>38</b>	<b>4</b>	<b>6999</b>	<b>406</b>	<b>5214</b>	<b>1</b>	<b>0</b>	<b>6</b>	<b>3</b>	<b>42</b>	<b>5214</b>	<b>54</b>	<b>5217</b>	<b>9</b>	<b>5217</b>	<b>438</b>	<b>3507</b>	<b>15</b>	
Manitoba	1635	355	1308	0	1	6	7	0	1308	7	97	0	0	0	5	0	97	8	126	0	97	21	126	0	
Saskatchewan	2824	460	1139	0	0	164	164	2	1069	14	422	0	0	0	0	0	422	12	422	11	422	42	422	1	
Alberta	5825	1044	3920	141	20	5	166	6	3602	79	1128	10	2	5	0	0	1128	14	0	0	1118	128	1128	3	
<b>Prairies</b>	<b>10284</b>	<b>1859</b>	<b>6367</b>	<b>141</b>	<b>21</b>	<b>175</b>	<b>337</b>	<b>8</b>	<b>5979</b>	<b>100</b>	<b>1647</b>	<b>10</b>	<b>2</b>	<b>5</b>	<b>5</b>	<b>0</b>	<b>1647</b>	<b>34</b>	<b>548</b>	<b>11</b>	<b>1637</b>	<b>191</b>	<b>1676</b>	<b>4</b>	
British Columbia	3648	580	3458	29	5	3	86	4	3458	80	693	5	8	1	12	0	693	18	693	8	645	134	645	6	
Yukon	59	13	42	0	0	0	0	0	42	1	N.C.	N.C.	N.C.	N.C.	N.C.	N.C.	N.C.	N.C.	N.C.	N.C.	N.C.	N.C.	N.C.	N.C.	
Northwest Territories	24	2	23	2	0	0	2	0	23	0	N.C.	N.C.	N.C.	N.C.	N.C.	N.C.	N.C.	N.C.	N.C.	N.C.	N.C.	23	1	N.C.	N.C.
Nunavut	111	15	79	0	1	0	1	0	79	3	N.C.	N.C.	N.C.	N.C.	N.C.	N.C.	N.C.	N.C.	N.C.	N.C.	N.C.	N.C.	N.C.	N.C.	
<b>Territories</b>	<b>194</b>	<b>30</b>	<b>144</b>	<b>2</b>	<b>1</b>	<b>0</b>	<b>3</b>	<b>0</b>	<b>144</b>	<b>4</b>	<b>N.C.</b>	<b>N.C.</b>	<b>N.C.</b>	<b>N.C.</b>	<b>N.C.</b>	<b>N.C.</b>	<b>N.C.</b>	<b>N.C.</b>	<b>N.C.</b>	<b>N.C.</b>	<b>N.C.</b>	<b>23</b>	<b>1</b>	<b>N.C.</b>	<b>N.C.</b>
<b>CANADA</b>	<b>37956</b>	<b>6712</b>	<b>24183</b>	<b>199</b>	<b>35</b>	<b>248</b>	<b>523</b>	<b>21</b>	<b>22822</b>	<b>924</b>	<b>9095</b>	<b>27</b>	<b>17</b>	<b>19</b>	<b>28</b>	<b>42</b>	<b>9113</b>	<b>158</b>	<b>8002</b>	<b>48</b>	<b>8014</b>	<b>848</b>	<b>7353</b>	<b>29</b>	

The data in the RVDSS report represent surveillance data available at the time of writing. Data missing from the current week are denoted by N.R. Data not collected by reporting lab denoted by N.C.

Some specimens from Yukon (YT) are sent to reference laboratories in British Columbia and reported results reflect specimens identified as originating from YT.

Results from British Columbia comprise of specimens from the following sites: Children's and Women's Hospital Laboratory, Fraser Health Medical Microbiology Laboratory, Island Health, Providence Health Care, Vancouver Coastal Health sites, Victoria General Hospital, BCCDC Public Health Laboratory, Interior Health Authority sites and Northern Health Authority sites.

Due to different testing protocols of laboratories across Canada, influenza A subtype detection counts may not be included in total influenza A detection counts. Total influenza A and B positive counts are used to calculate percentage of tests positive.

Delays in the reporting of data may cause data to change retrospectively.

**Table 2: Cumulative respiratory virus detections from August 27, 2023 to November 4, 2023 (surveillance weeks 2023-35 to 2023-44)**

Reporting Laboratory	SARS-CoV-2 Tested	SARS-CoV-2 Positive	Flu Tested	A(H1)pdm09 Positive	A(H3) Positive	A(UnS) Positive	Total Flu A Positive	Total Flu B Positive	RSV Tested	RSV Positive	HPIV Tested	HPIV 1 Positive	HPIV 2 Positive	HPIV 3 Positive	HPIV 4 Positive	Other HPIV Positive	ADV Tested	ADV Positive	HMPV Tested	HMPV Positive	EV/RV Tested	EV/RV Positive	HCoV Tested	HCoV Positive	
<b>Newfoundland</b>	5089	911	3291	0	0	28	28	0	3291	25	3291	3	8	6	34	0	3291	45	3291	10	3291	627	3291	9	
Prince Edward Island	1845	226	409	0	0	2	2	0	409	3	91	0	0	0	3	0	90	4	80	0	90	43	74	0	
Nova Scotia	14147	3508	5733	0	0	30	30	2	5733	73	364	14	1	1	6	0	364	19	357	1	364	122	363	0	
New Brunswick	8523	1258	6240	12	1	5	18	1	6134	48	625	6	2	0	7	0	625	11	625	0	625	185	625	1	
<b>Atlantic</b>	<b>29604</b>	<b>5903</b>	<b>15673</b>	<b>12</b>	<b>1</b>	<b>65</b>	<b>78</b>	<b>3</b>	<b>15567</b>	<b>149</b>	<b>4371</b>	<b>23</b>	<b>11</b>	<b>7</b>	<b>50</b>	<b>0</b>	<b>4370</b>	<b>79</b>	<b>4353</b>	<b>11</b>	<b>4370</b>	<b>977</b>	<b>4353</b>	<b>10</b>	
Région Nord-Est	16240	3053	11345	0	0	16	16	1	2794	71	592	10	5	2	14	0	592	20	587	12	N.C.	N.C.	592	0	
Québec-Chaudière-Appalaches	21874	3877	5599	0	0	18	18	4	5604	216	2427	9	2	1	8	0	2558	119	2427	33	N.C.	N.C.	2427	2	
Centre-du-Québec	21765	4510	3941	0	0	15	15	4	3927	153	309	11	5	4	3	0	309	16	309	4	N.C.	N.C.	309	1	
Montréal-Laval	31621	5092	12785	0	0	57	57	5	11489	440	6845	63	23	30	18	0	6845	126	6863	70	N.C.	N.C.	6845	47	
Ouest du Québec	17919	4397	5118	1	0	25	26	6	5108	184	197	7	3	1	4	0	197	13	197	3	N.C.	N.C.	197	1	
Montréal	15395	3019	8057	0	0	42	42	9	7495	225	61	1	0	0	1	0	61	1	61	0	N.C.	N.C.	61	0	
<b>Province of Québec</b>	<b>124814</b>	<b>23948</b>	<b>46845</b>	<b>1</b>	<b>0</b>	<b>173</b>	<b>174</b>	<b>29</b>	<b>36417</b>	<b>1289</b>	<b>10431</b>	<b>101</b>	<b>38</b>	<b>38</b>	<b>48</b>	<b>0</b>	<b>10562</b>	<b>295</b>	<b>10444</b>	<b>122</b>	<b>N.C.</b>	<b>N.C.</b>	<b>10431</b>	<b>51</b>	
P.H.O.L. - Ottawa	3962	1456	2276	10	0	1	11	0	2276	16	1358	0	0	0	0	20	1358	0	1358	1	1358	264	1358	16	
EOURLA	12538	1398	4385	0	0	15	15	4	4385	342	310	0	3	2	1	0	285	1	310	1	310	81	310	1	
P.H.O.L. - Kingston	2703	802	1267	1	0	0	0	0	1267	9	957	0	0	0	0	24	957	4	957	0	957	205	957	1	
UHN / Mount Sinai Hospital	9856	796	5650	0	0	10	10	7	5650	28	222	0	0	4	0	0	222	1	222	0	222	13	222	0	
P.H.O.L. - Toronto	5927	2009	9212	67	25	2	67	1	9212	103	8309	0	0	0	0	243	8310	82	8306	41	8309	1679	8306	21	
Sick Kids Hospital - Toronto	1130	76	966	9	8	7	24	1	966	86	966	10	4	6	5	0	966	28	966	6	966	176	966	4	
Shared Hospital Laboratory	11896	1166	11896	28	17	2	47	2	11898	344	11903	0	0	0	0	81	11901	88	11897	11	11924	768	11899	18	
P.H.O.L. - Sault Ste. Marie	153	117	129	0	0	0	0	0	129	0	71	0	0	0	0	1	71	0	71	0	71	13	71	0	
P.H.O.L. - Timmins	330	104	263	0	0	0	0	0	263	3	214	0	0	0	0	11	214	3	214	0	214	28	214	0	
St. Joseph's - London	7978	1166	1128	0	0	3	3	1	1128	42	885	0	0	0	0	9	902	6	902	1	902	133	902	3	
P.H.O.L. - London	4900	1618	3250	3	4	0	3	1	3250	47	2577	0	0	0	0	60	2577	13	2577	0	2577	437	2577	0	
P.H.O.L. - Orillia	191	30	423	2	1	0	3	0	422	18	409	0	0	0	0	11	409	11	409	2	409	105	409	0	
P.H.O.L. - Thunder Bay	623	250	327	0	0	0	0	0	327	0	247	0	0	0	0	5	247	1	247	1	247	37	247	1	
P.H.O.L. - Sudbury	213	98	209	0	0	0	0	0	207	0	146	0	0	0	0	2	147	1	146	0	146	33	146	0	
P.H.O.L. - Hamilton	2505	779	1931	5	1	0	2	1	1931	32	1383	0	0	0	0	41	1383	17	1383	13	1383	311	1383	1	
P.H.O.L. - Peterborough	698	239	673	0	0	1	1	1	673	71	591	0	0	0	0	16	591	9	591	1	591	153	591	2	
St. Joseph's - Hamilton	16814	1800	14281	0	0	36	36	12	14281	379	14281	0	0	40	0	0	14281	82	14281	33	14281	1319	0	0	
Sault Area Hospital	1307	158	881	1	1	0	2	0	874	4	675	0	0	2	2	0	675	7	675	0	675	115	685	0	
<b>Province of Ontario</b>	<b>83724</b>	<b>14062</b>	<b>59147</b>	<b>126</b>	<b>57</b>	<b>77</b>	<b>224</b>	<b>31</b>	<b>59139</b>	<b>1524</b>	<b>45504</b>	<b>10</b>	<b>7</b>	<b>54</b>	<b>8</b>	<b>524</b>	<b>45496</b>	<b>354</b>	<b>45512</b>	<b>111</b>	<b>45542</b>	<b>5870</b>	<b>31243</b>	<b>68</b>	
Manitoba	14884	2622	11547	0	2	32	34	5	11547	42	701	0	5	4	26	0	701	41	1097	2	701	277	1097	3	
Saskatchewan	19119	2584	8256	0	0	233	233	6	7987	49	3270	6	5	1	6	0	3270	95	3265	31	3255	640	3270	8	
Alberta	49264	7643	33703	404	69	14	487	38	31287	241	10536	44	33	15	3	0	10534	118	5237	0	10338	1622	10535	49	
<b>Prairies</b>	<b>83267</b>	<b>12849</b>	<b>53506</b>	<b>404</b>	<b>71</b>	<b>279</b>	<b>754</b>	<b>49</b>	<b>50821</b>	<b>332</b>	<b>14507</b>	<b>50</b>	<b>43</b>	<b>20</b>	<b>35</b>	<b>0</b>	<b>14505</b>	<b>254</b>	<b>9599</b>	<b>33</b>	<b>14294</b>	<b>2539</b>	<b>14902</b>	<b>60</b>	
<b>British Columbia</b>	<b>34575</b>	<b>6594</b>	<b>31306</b>	<b>283</b>	<b>51</b>	<b>17</b>	<b>469</b>	<b>19</b>	<b>31289</b>	<b>304</b>	<b>7063</b>	<b>35</b>	<b>29</b>	<b>17</b>	<b>70</b>	<b>0</b>	<b>7063</b>	<b>171</b>	<b>7063</b>	<b>64</b>	<b>6708</b>	<b>1462</b>	<b>6685</b>	<b>27</b>	
Yukon	567	77	326	0	1	0	2	0	326	1	N.C.	N.C.	N.C.	N.C.	N.C.	N.C.	N.C.	N.C.	N.C.	N.C.	N.C.	N.C.	N.C.	N.C.	
Northwest Territories	201	29	162	3	0	0	3	0	162	0	N.C.	N.C.	N.C.	N.C.	N.C.	N.C.	N.C.	N.C.	N.C.	N.C.	N.C.	162	47	N.C.	N.C.
Nunavut	949	144	615	0	1	0	1	0	615	4	N.C.	N.C.	N.C.	N.C.	N.C.	N.C.	N.C.	N.C.	N.C.	N.C.	N.C.	N.C.	N.C.	N.C.	N.C.
<b>Territories</b>	<b>1717</b>	<b>250</b>	<b>1103</b>	<b>3</b>	<b>2</b>	<b>0</b>	<b>6</b>	<b>0</b>	<b>1103</b>	<b>5</b>	<b>N.C.</b>	<b>N.C.</b>	<b>N.C.</b>	<b>N.C.</b>	<b>N.C.</b>	<b>N.C.</b>	<b>N.C.</b>	<b>N.C.</b>	<b>N.C.</b>	<b>N.C.</b>	<b>162</b>	<b>47</b>	<b>N.C.</b>	<b>N.C.</b>	
<b>CANADA</b>	<b>357701</b>	<b>63606</b>	<b>207580</b>	<b>829</b>	<b>182</b>	<b>611</b>	<b>1705</b>	<b>131</b>	<b>194336</b>	<b>3603</b>	<b>81876</b>	<b>219</b>	<b>128</b>	<b>136</b>	<b>211</b>	<b>524</b>	<b>81996</b>	<b>1153</b>	<b>76971</b>	<b>341</b>	<b>71076</b>	<b>10895</b>	<b>67614</b>	<b>216</b>	

The data in the RVDSS report represent surveillance data available at the time of writing. Data not collected by reporting lab denoted by N.C.

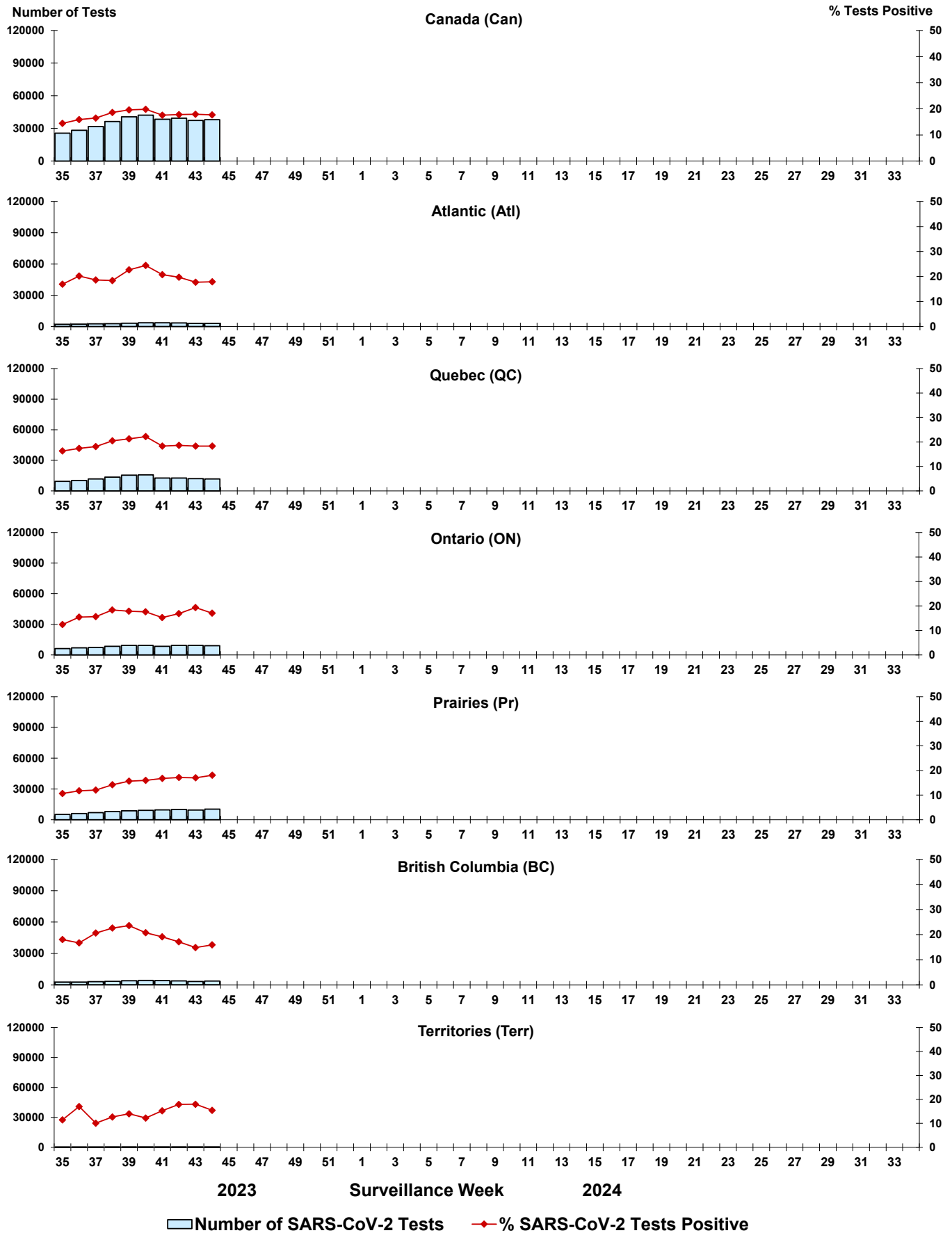
Some specimens from Yukon (YT) are sent to reference laboratories in British Columbia and reported results reflect specimens identified as originating from YT.

Results from British Columbia comprise of specimens from the following sites: Children's and Women's Hospital Laboratory, Fraser Health Medical Microbiology Laboratory, Island Health, Providence Health Care, Vancouver Coastal Health sites, Victoria General Hospital, BCCDC Public Health Laboratory, Interior Health Authority sites and Northern Health Authority sites.

Due to different testing protocols of laboratories across Canada, influenza A subtype detection counts may not be included in total influenza A detection counts. Total influenza A and B positive counts are used to calculate percentage of tests positive.

Delays in the reporting of data may cause data to change retrospectively. Due to these delays, the sum of weekly report totals do not add up to cumulative totals.

**Figure 3: Positive severe acute respiratory syndrome coronavirus 2 (SARS-CoV-2) tests (%) in Canada by region by surveillance week**



Note: Differences in positivity between jurisdictions can reflect differences in testing practices. Please interpret with caution.

Figure 4: Positive Influenza (Flu) tests (%) in Canada by region by surveillance week

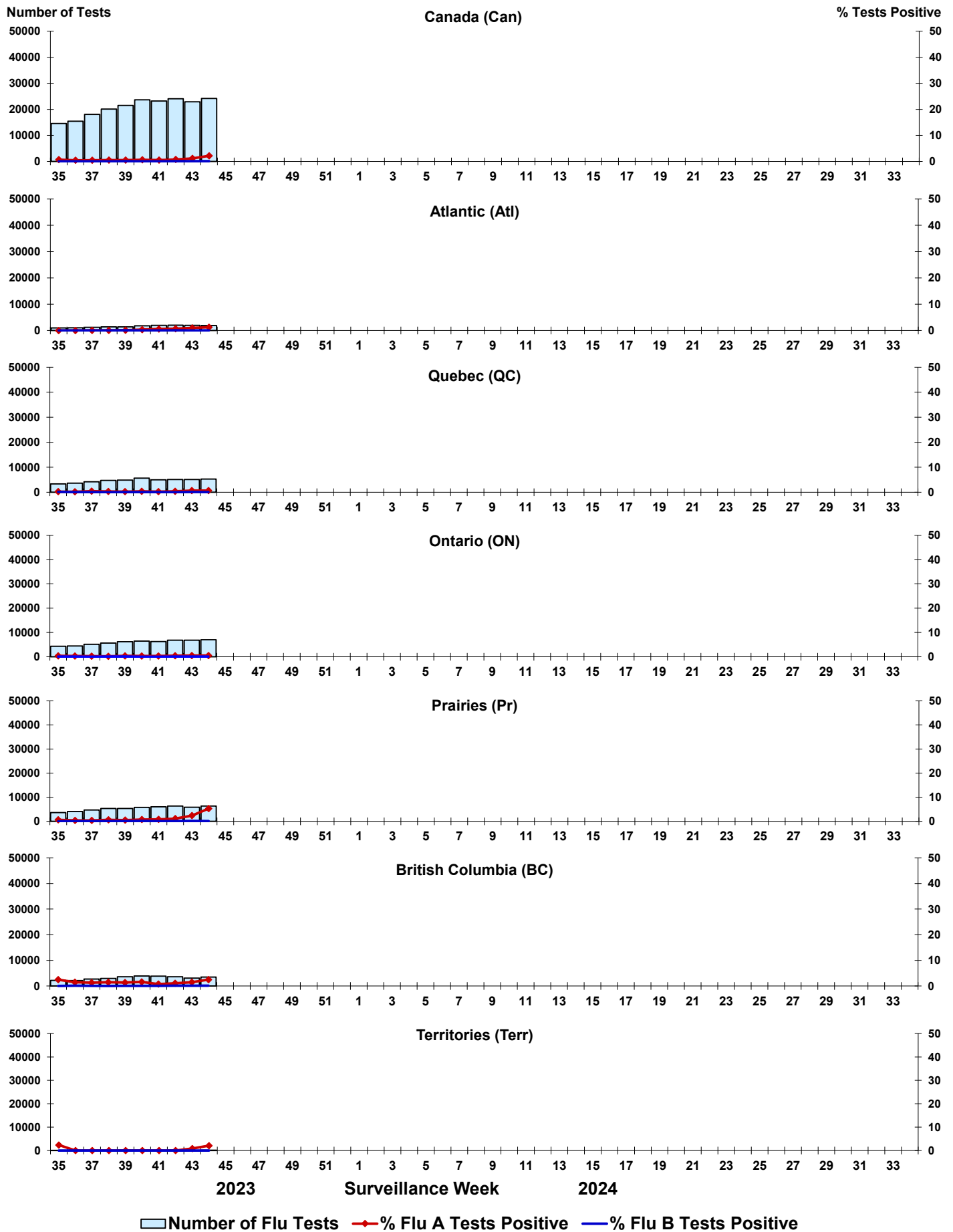


Figure 5: Positive Respiratory syncytial virus (RSV) tests (%) in Canada by region by surveillance week

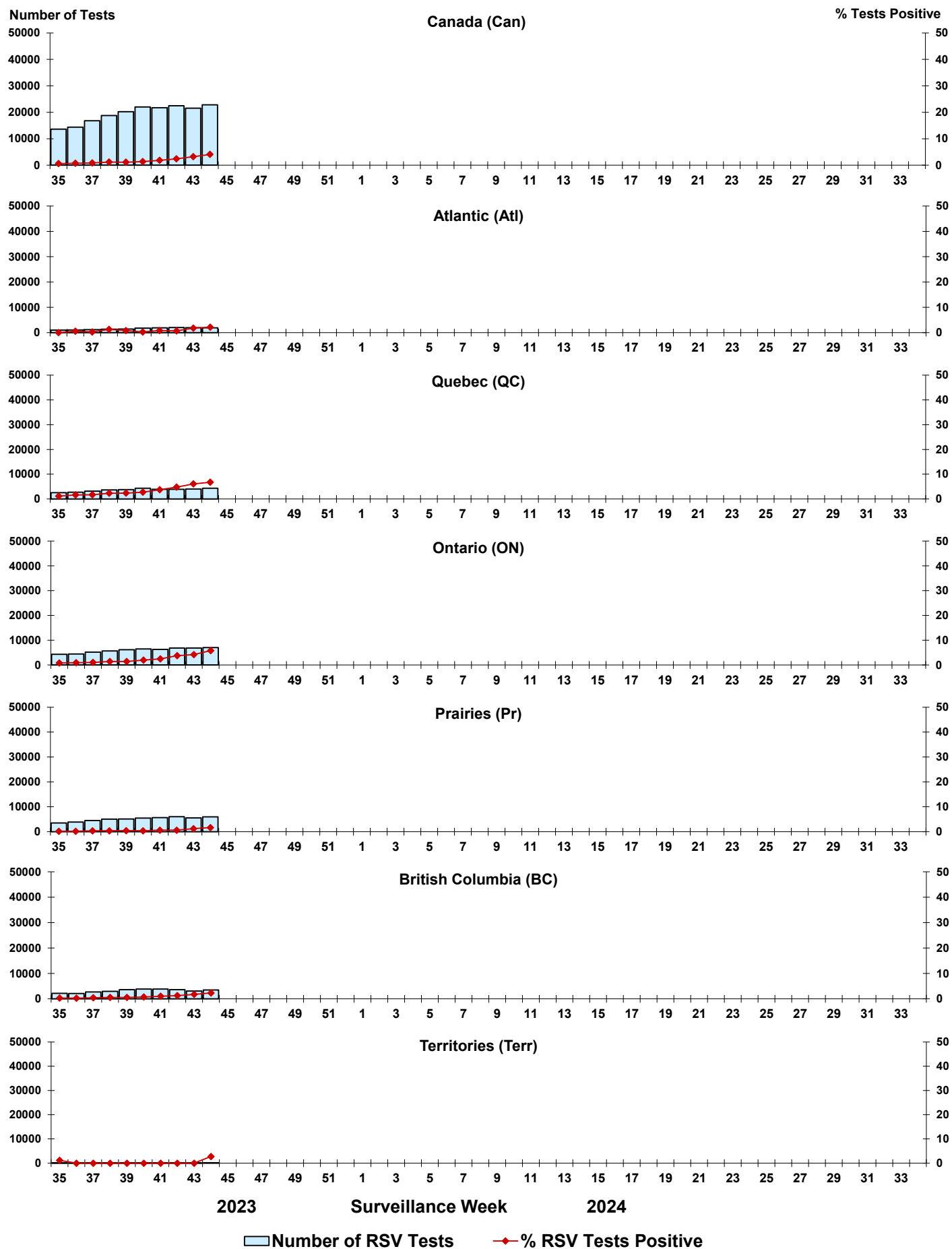




Figure 6: Positive Human parainfluenza virus (HPIV) tests (%) in Canada by region by surveillance week

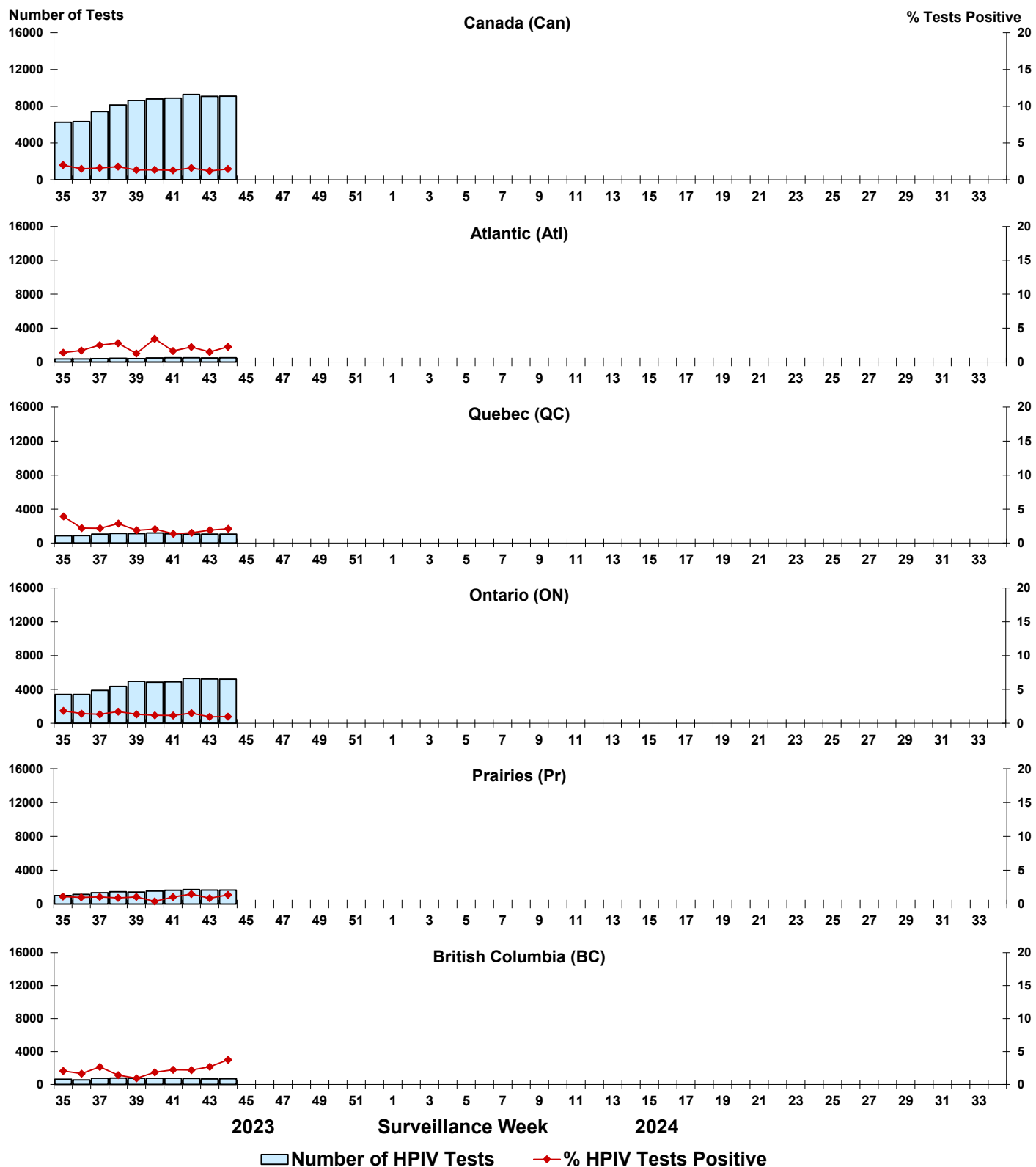


Figure 7: Positive Adenovirus (ADV) tests (%) in Canada by region by surveillance week

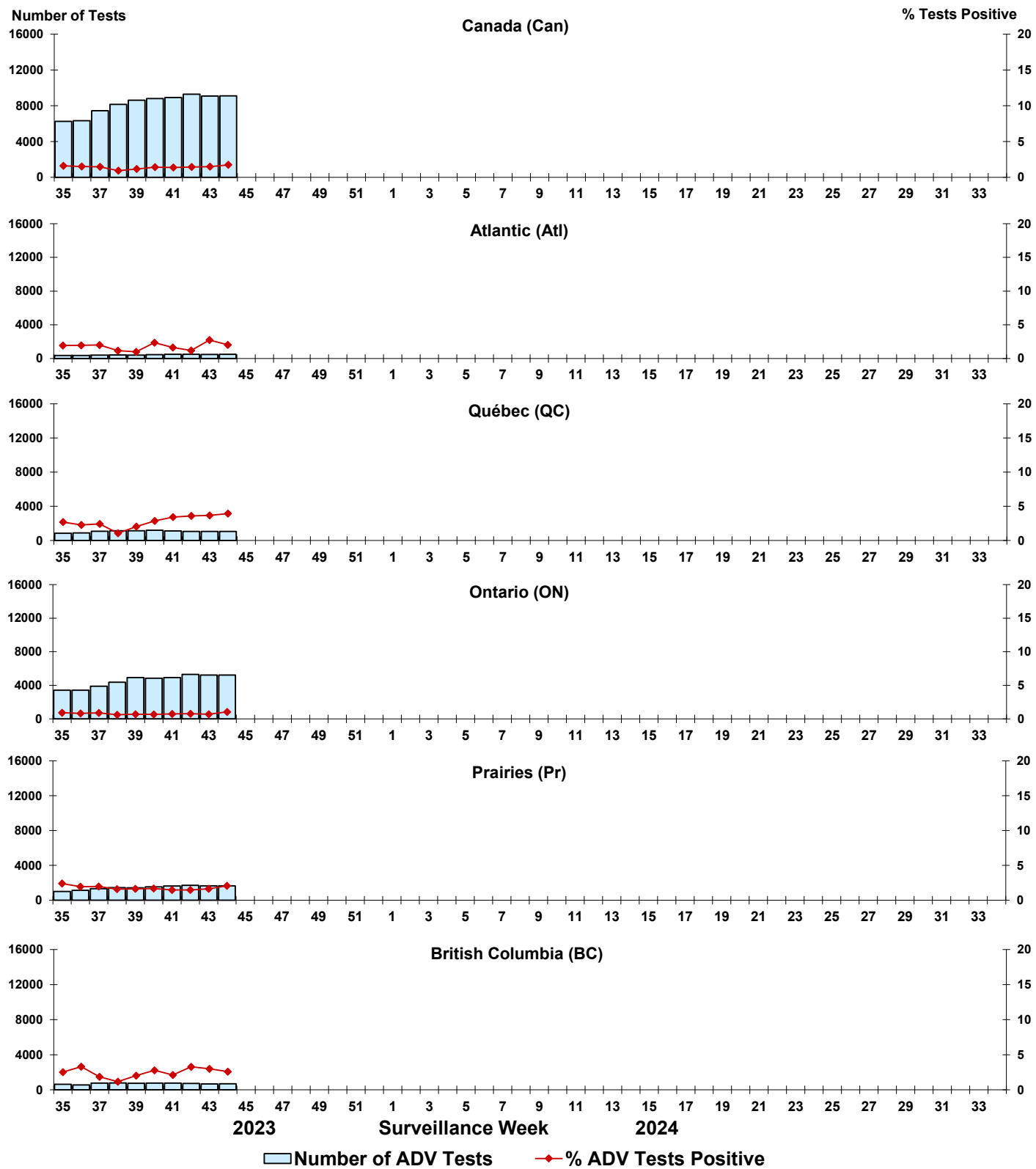


Figure 8: Positive Human metapneumovirus (HMPV) tests (%) in Canada by region by surveillance week

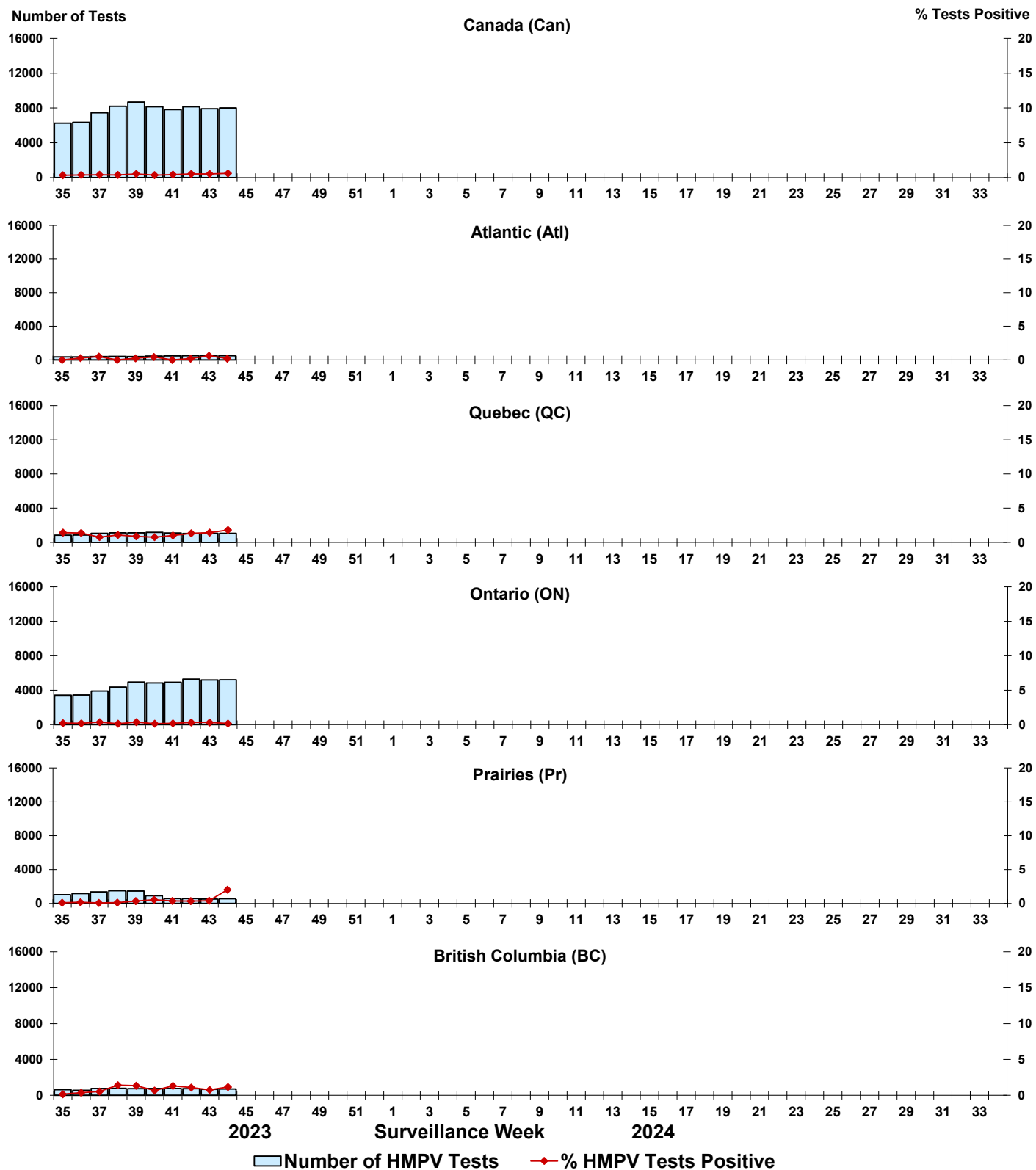


Figure 9: Positive Enterovirus/Rhinovirus (EV/RV) tests (%) in Canada by region by surveillance week

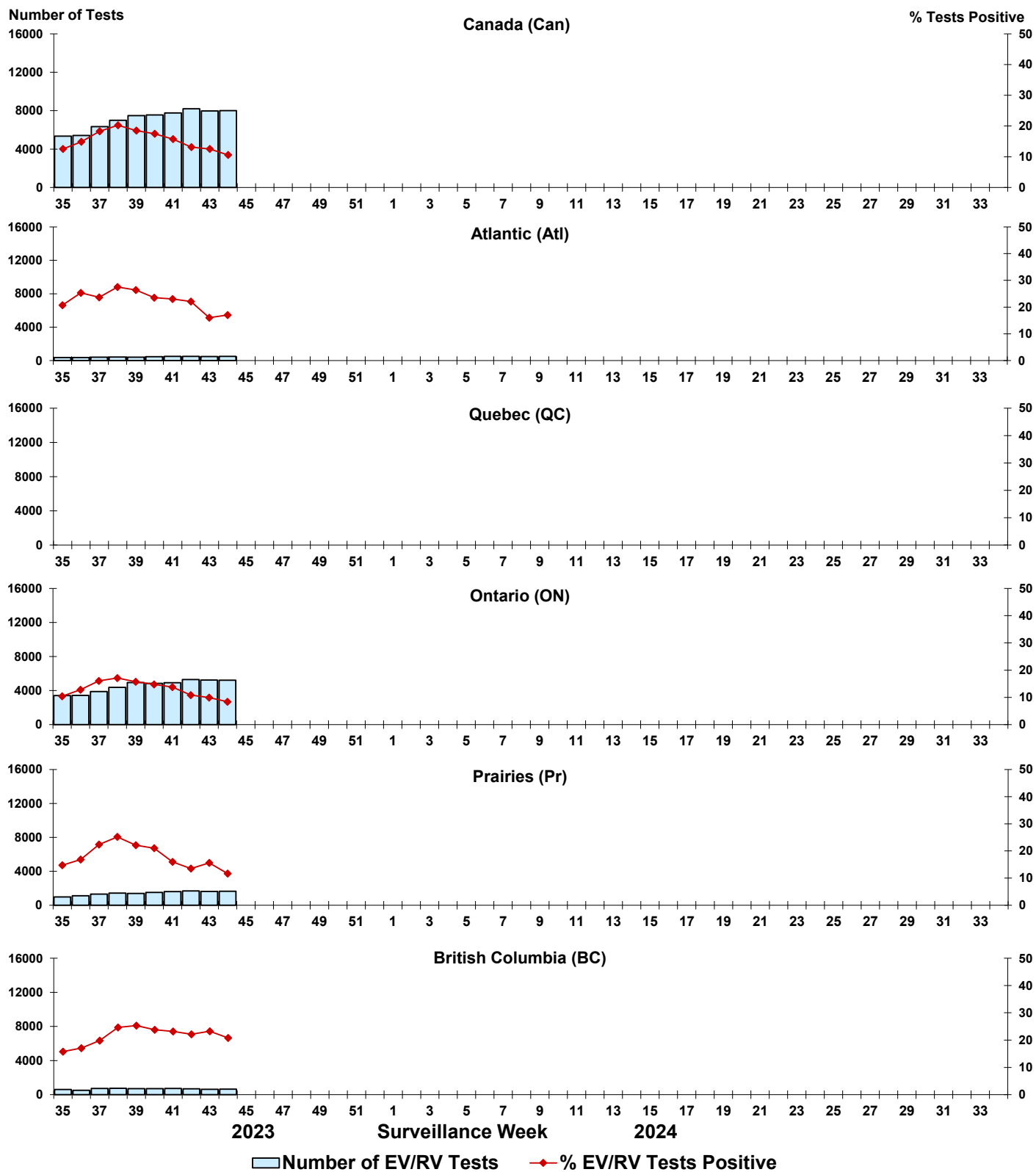


Figure 10: Positive Human coronavirus (HCoV) tests (%) in Canada by region by surveillance week

