

# RESPIRATORY VIRUS DETECTION REPORT

August 13 to August 19, 2023  
(Surveillance Week 2023-33)



Please note that the Respiratory Virus Detection Surveillance System (RVDSS) is a sentinel laboratory surveillance system that does not capture all respiratory virus testing performed in Canada; differences may exist between the data presented in this report and provincial/territorial epidemiological reports. SARS-CoV-2 laboratory data is included in this report to facilitate the comparison of positivity with other respiratory viruses. Interpretation should be made with caution as testing practices differ among viruses.

For additional SARS-CoV-2 surveillance information, please refer to the [COVID-19 epidemiology update](#).

## Overall Summary

In week 33 (week ending August 19, 2023) in Canada, participating RVDSS laboratories reported 2,529 detections of SARS-CoV-2 from 21,838 tests (11.6% positive). Among non-SARS-CoV-2 respiratory viruses, where test volumes are lower (range of 4,384 to 12,631 tests), activity of enterovirus/rhinovirus is highest.

- There has been an observed increase in national SARS-CoV-2 percent positivity over the latest six reporting weeks following a period of decline.
- While activity of enterovirus/rhinovirus is highest, it remains below expected levels typical of this time of year (580 detections; 12.8% positive).
- Activity of all other non-SARS-CoV-2 respiratory viruses is low and near expected levels typical of this time of year.
- 33/35 sentinel laboratories reported surveillance data

## Abbreviations

ADV: Adenovirus

Atl: Atlantic Canada

BC: British Columbia

Can: Canada

EORLA: Eastern Ontario Regional Laboratory Association

EV/RV: Enterovirus/Rhinovirus

Flu: Influenza

Flu A(H1N1)pdm09: Influenza A(H1N1)pdm09

Flu A(H3): Influenza A(H3N2)

Flu A (UnS): Influenza A(Unsubtyped)

HCoV: Human coronavirus 229E/OC43/NL63/HKU1

HMPV: Human metapneumovirus

HPIV: Human parainfluenza virus

HSC: Health Sciences Centre

N.C.: Data not collected

N.R.: Data not reported for current week

ON: Ontario

PR: Prairies

P.H.O.L.: Public Health Ontario Laboratory

QC: Quebec

RSV: Respiratory syncytial virus

RVDSS: Respiratory Virus Detection Surveillance System

SARS-CoV-2: Severe acute respiratory syndrome coronavirus 2

Terr: Territories of Canada

UHN: University Health Network

© His Majesty the King in Right of Canada, as represented by the Minister of Health, 2021

ISSN: 2564-2359 | Cat.: HP38-7E-PDF | Pub.: 210284

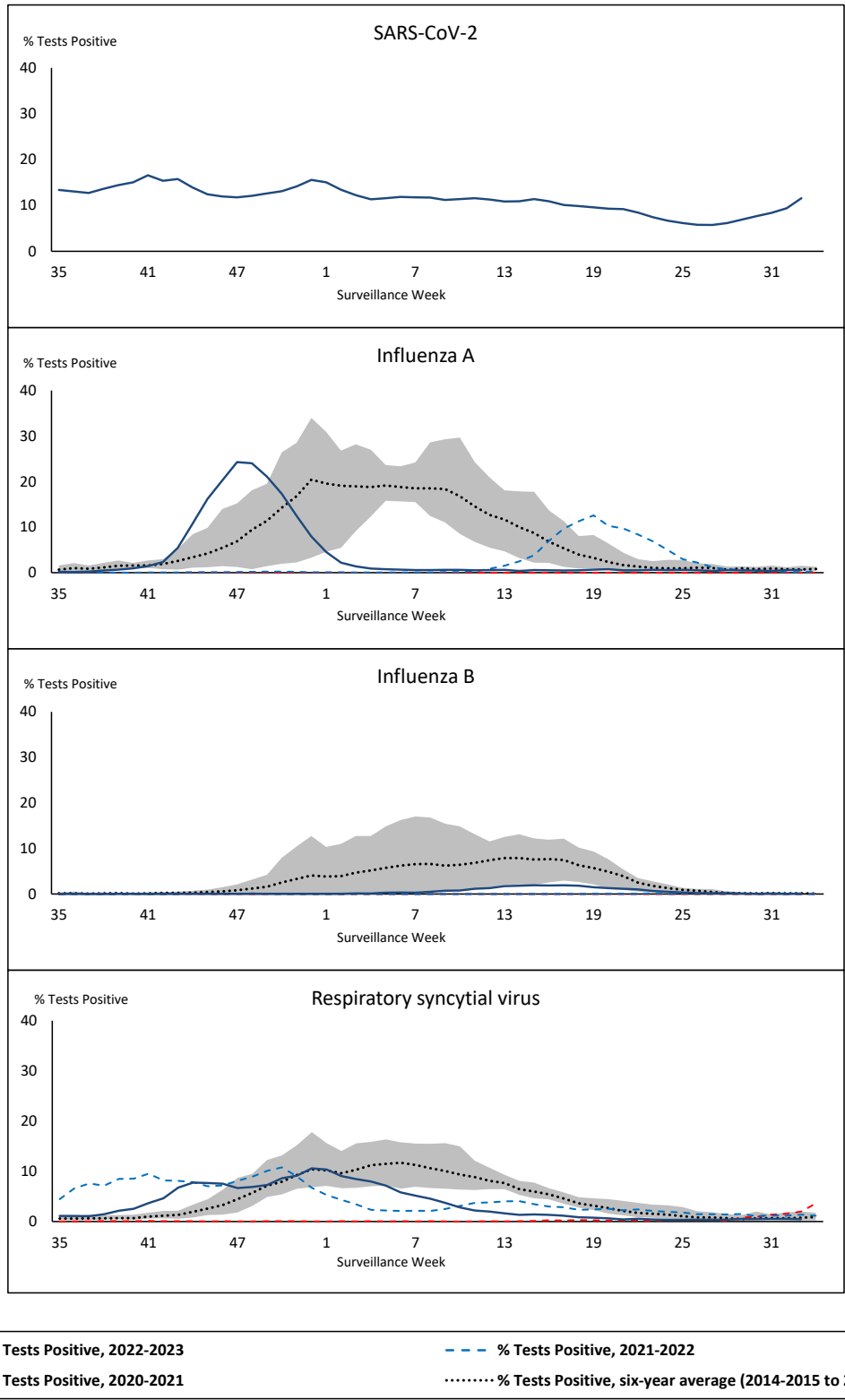


Public Health  
Agency of Canada

Agence de la santé  
publique du Canada

Canada

**Figure 1: Positive severe acute respiratory syndrome coronavirus 2 (SARS-CoV-2), influenza, and respiratory syncytial virus tests (%) reported by participating laboratories in Canada by surveillance week compared to average and range from 2014-2015 to 2019-2020 season**



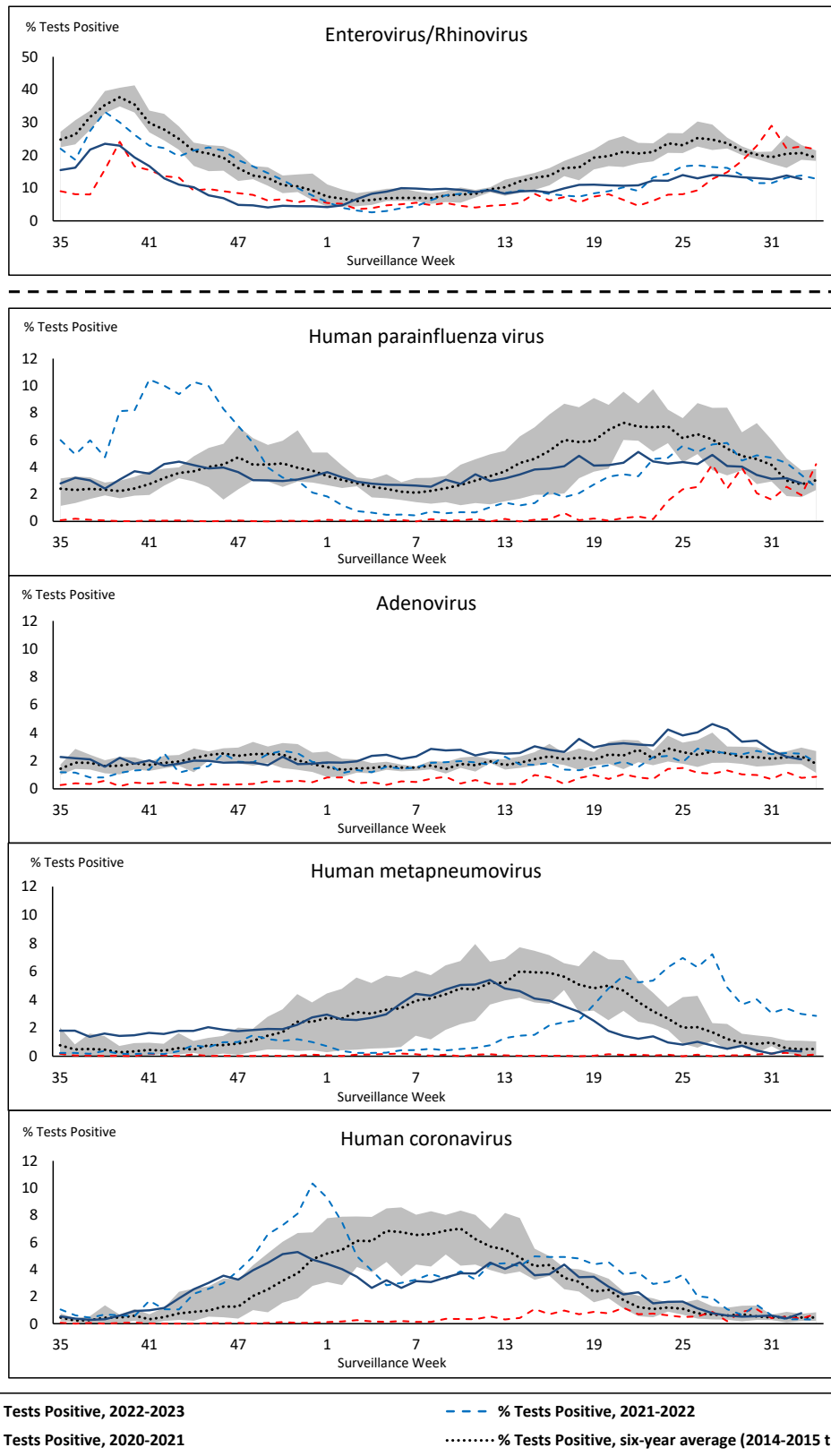
Shaded area represents the maximum and minimum % of respiratory virus tests positive reported by week from seasons 2014-2015 to 2019-2020

Note: Changes to testing practices during the COVID-19 pandemic may cause substantial changes to indicator estimates from previous years. Collection of laboratory testing practice meta-data to understand these changes is ongoing. Interpret trends with caution.

Note: SARS-CoV-2 surveillance was integrated into RVDSS at the beginning of the 2022-2023 season; no appropriate data is available for historical comparison.

Note: Data from week 11 of the 2019-2020 season onwards are excluded from the historical comparison due to the COVID-19 pandemic.

**Figure 2: Positive tests (%) of other respiratory viruses reported by participating laboratories in Canada by surveillance week compared to average and range from 2014-2015 to 2019-2020 season**



Shaded area represents the maximum and minimum % of respiratory virus tests positive reported by week from seasons 2014-2015 to 2019-2020

Note: Changes to testing practices during the COVID-19 pandemic may cause substantial changes to indicator estimates from previous years. Collection of laboratory testing practice meta-data to understand these changes is ongoing. Interpret trends with caution.

Note: Data from week 11 of the 2019-2020 season onwards are excluded from the historical comparison due to the COVID-19 pandemic.

Note: % Tests Positive scale changes across the dashed line

**Table 1: Respiratory virus detections for the week ending August 19, 2023 (surveillance week 2023-33)**

Reporting Laboratory	SARS-CoV-2 Tested	SARS-CoV-2 Positive	Flu Tested	A(H1)pdm09 Positive	A(H3) Positive	A(UnS) Positive	Total Flu A Positive	Total Flu B Positive	RSV Tested	RSV Positive	HPIV Tested	HPIV 1 Positive	HPIV 2 Positive	HPIV 3 Positive	HPIV 4 Positive	Other HPIV Positive	ADV Tested	ADV Positive	HMPV Tested	HMPV Positive	EV/RV Tested	EV/RV Positive	HCoV Tested	HCoV Positive	
Newfoundland	306	42	213	0	0	0	0	0	213	4	213	1	0	0	5	0	213	5	213	0	213	60	213	2	
Prince Edward Island	109	10	7	0	0	0	0	0	7	0	5	0	0	0	0	0	5	0	5	0	5	0	5	0	
Nova Scotia	767	114	364	0	0	11	11	0	364	2	21	1	0	0	0	0	21	1	21	0	21	6	21	0	
New Brunswick	534	36	317	0	0	1	1	0	305	0	47	0	1	0	0	0	47	1	47	0	47	8	47	0	
<b>Atlantic</b>	<b>1716</b>	<b>202</b>	<b>901</b>	<b>0</b>	<b>0</b>	<b>12</b>	<b>12</b>	<b>0</b>	<b>889</b>	<b>6</b>	<b>286</b>	<b>2</b>	<b>1</b>	<b>0</b>	<b>5</b>	<b>0</b>	<b>286</b>	<b>7</b>	<b>286</b>	<b>0</b>	<b>286</b>	<b>74</b>	<b>286</b>	<b>2</b>	
Région Nord-Est	1089	148	906	0	0	1	1	0	150	0	39	0	2	0	1	0	39	3	39	0	N.C.	N.C.	39	0	
Québec-Chaudière-Appalaches	1650	219	351	0	0	0	0	0	351	4	152	1	0	0	1	0	167	3	152	1	N.C.	N.C.	152	1	
Centre-du-Québec	1091	136	174	0	0	1	1	0	174	2	42	0	0	1	0	0	42	1	42	0	N.C.	N.C.	42	0	
Montréal-Laval	2122	301	954	0	0	8	8	1	858	7	539	2	4	0	2	0	539	6	539	4	N.C.	N.C.	539	1	
Ouest du Québec	932	137	280	0	0	2	2	0	280	1	25	0	0	1	1	0	25	3	25	0	N.C.	N.C.	25	0	
Montréal	977	148	556	0	0	1	1	1	554	3	2	0	0	0	0	0	2	0	2	0	N.C.	N.C.	2	0	
<b>Province of Québec</b>	<b>7861</b>	<b>1089</b>	<b>3221</b>	<b>0</b>	<b>0</b>	<b>13</b>	<b>13</b>	<b>2</b>	<b>2367</b>	<b>17</b>	<b>799</b>	<b>3</b>	<b>6</b>	<b>2</b>	<b>5</b>	<b>0</b>	<b>814</b>	<b>16</b>	<b>799</b>	<b>5</b>	<b>N.C.</b>	<b>N.C.</b>	<b>799</b>	<b>2</b>	
P.H.O.L. - Ottawa	217	97	141	1	0	0	1	0	141	0	88	0	0	0	0	1	88	0	88	0	88	12	88	1	
EOCLA	1179	114	262	0	0	1	1	1	262	5	20	0	1	0	0	0	20	0	20	0	20	0	20	0	
P.H.O.L. - Kingston	180	36	64	0	0	0	0	0	64	0	50	0	0	0	0	7	50	0	50	0	50	4	50	0	
UHN / Mount Sinai Hospital	896	34	508	0	0	1	1	1	508	0	31	0	0	2	0	0	31	2	31	1	31	3	31	3	
P.H.O.L. - Toronto	364	102	760	2	3	1	6	0	760	2	699	0	0	0	0	44	699	9	699	1	699	131	699	8	
Sick Kids Hospital - Toronto	N.R.	N.R.	N.R.	N.R.	N.R.	N.R.	N.R.	N.R.	N.R.	N.R.	N.R.	N.R.	N.R.	N.R.	N.R.	N.R.	N.R.	N.R.	N.R.	N.R.	N.R.	N.R.	N.R.	N.R.	N.R.
Shared Hospital Laboratory	722	36	722	1	1	0	2	0	722	5	722	0	0	0	0	9	722	10	729	0	729	41	729	1	
P.H.O.L. - Sault Ste. Marie	1	0	1	0	0	0	0	0	1	0	1	0	0	0	0	0	1	0	1	0	1	0	1	0	
P.H.O.L. - Timmins	58	1	6	0	0	0	0	0	6	0	6	0	0	0	0	0	6	0	6	0	6	2	6	0	
St. Joseph's - London	501	29	31	0	0	0	0	0	31	0	31	0	0	0	0	0	31	0	31	0	31	3	31	0	
P.H.O.L. - London	164	20	136	0	0	0	0	1	136	0	123	0	0	0	0	4	123	0	123	0	123	25	123	0	
P.H.O.L. - Orillia	26	1	26	0	0	0	0	0	26	0	24	0	0	0	0	4	24	0	24	0	24	3	24	0	
P.H.O.L. - Thunder Bay	41	4	20	0	0	0	0	0	20	0	16	0	0	0	0	0	16	0	16	0	16	8	16	0	
P.H.O.L. - Sudbury	15	3	12	0	0	0	0	0	12	0	12	0	0	0	0	0	12	0	12	0	12	5	12	0	
P.H.O.L. - Hamilton	192	54	138	2	0	0	2	0	138	0	108	0	0	0	0	9	108	1	108	2	108	17	108	0	
P.H.O.L. - Peterborough	51	23	78	0	0	0	0	0	78	2	62	0	0	0	0	4	62	2	62	0	62	13	62	0	
St. Joseph's - Hamilton	1109	82	995	0	0	2	2	3	995	5	995	0	0	2	0	0	995	15	995	8	995	59	0	0	
Sault Area Hospital	41	1	41	0	0	0	0	0	41	0	41	0	0	0	0	0	41	1	41	0	41	4	48	1	
<b>Province of Ontario</b>	<b>5757</b>	<b>637</b>	<b>3941</b>	<b>6</b>	<b>4</b>	<b>5</b>	<b>15</b>	<b>6</b>	<b>3941</b>	<b>19</b>	<b>3029</b>	<b>0</b>	<b>1</b>	<b>4</b>	<b>0</b>	<b>82</b>	<b>3029</b>	<b>40</b>	<b>3036</b>	<b>12</b>	<b>3036</b>	<b>330</b>	<b>2048</b>	<b>14</b>	
Manitoba	886	94	772	0	1	0	1	0	772	4	56	0	0	1	1	0	56	4	75	0	56	20	75	0	
Saskatchewan	931	54	397	0	0	3	3	1	391	1	245	1	3	0	2	0	245	13	245	0	245	39	245	10	
Alberta	2674	212	1955	2	0	0	2	1	1864	1	618	3	4	1	0	0	618	15	618	0	612	82	618	4	
<b>Prairies</b>	<b>4491</b>	<b>360</b>	<b>3124</b>	<b>2</b>	<b>1</b>	<b>3</b>	<b>6</b>	<b>2</b>	<b>3027</b>	<b>6</b>	<b>919</b>	<b>4</b>	<b>7</b>	<b>2</b>	<b>3</b>	<b>0</b>	<b>919</b>	<b>32</b>	<b>938</b>	<b>0</b>	<b>913</b>	<b>141</b>	<b>938</b>	<b>14</b>	
<b>British Columbia</b>	<b>1933</b>	<b>235</b>	<b>1394</b>	<b>12</b>	<b>1</b>	<b>3</b>	<b>26</b>	<b>1</b>	<b>1394</b>	<b>1</b>	<b>340</b>	<b>6</b>	<b>4</b>	<b>4</b>	<b>10</b>	<b>0</b>	<b>340</b>	<b>18</b>	<b>340</b>	<b>2</b>	<b>313</b>	<b>35</b>	<b>313</b>	<b>2</b>	
Yukon	47	5	19	0	0	0	0	0	19	0	N.C.	N.C.	N.C.	N.C.	N.C.	N.C.	N.C.	N.C.	N.C.	N.C.	N.C.	N.C.	N.C.	N.C.	
Northwest Territories	N.R.	N.R.	N.R.	N.R.	N.R.	N.R.	N.R.	N.R.	N.R.	N.R.	N.C.	N.C.	N.C.	N.C.	N.C.	N.C.	N.C.	N.C.	N.C.	N.C.	N.C.	0	0	N.C.	N.C.
Nunavut	33	1	31	0	0	0	0	0	31	3	N.C.	N.C.	N.C.	N.C.	N.C.	N.C.	N.C.	N.C.	N.C.	N.C.	N.C.	N.C.	N.C.	N.C.	
<b>Territories</b>	<b>80</b>	<b>6</b>	<b>50</b>	<b>0</b>	<b>0</b>	<b>0</b>	<b>0</b>	<b>0</b>	<b>50</b>	<b>3</b>	<b>N.C.</b>	<b>N.C.</b>	<b>N.C.</b>	<b>N.C.</b>	<b>N.C.</b>	<b>N.C.</b>	<b>N.C.</b>	<b>N.C.</b>	<b>N.C.</b>	<b>N.C.</b>	<b>0</b>	<b>0</b>	<b>N.C.</b>	<b>N.C.</b>	
<b>CANADA</b>	<b>21838</b>	<b>2529</b>	<b>12631</b>	<b>20</b>	<b>6</b>	<b>36</b>	<b>72</b>	<b>11</b>	<b>11668</b>	<b>52</b>	<b>5373</b>	<b>15</b>	<b>19</b>	<b>12</b>	<b>23</b>	<b>82</b>	<b>5388</b>	<b>113</b>	<b>5399</b>	<b>19</b>	<b>4548</b>	<b>580</b>	<b>4384</b>	<b>34</b>	

The data in the RVDSS report represent surveillance data available at the time of writing. Data missing from the current week are denoted by N.R. Data not collected by reporting lab denoted by N.C.

Some specimens from Yukon (YT) are sent to reference laboratories in British Columbia and reported results reflect specimens identified as originating from YT.

Results from British Columbia comprise of specimens from the following sites: Children's and Women's Hospital Laboratory, Fraser Health Medical Microbiology Laboratory, Island Health, Providence Health Care, Vancouver Coastal Health sites, Victoria General Hospital, BCCDC Public Health Laboratory, Interior Health Authority sites and Northern Health Authority sites.

Due to different testing protocols of laboratories across Canada, influenza A subtype detection counts may not be included in total influenza A detection counts. Total influenza A and B positive counts are used to calculate percentage of tests positive.

Delays in the reporting of data may cause data to change retrospectively.

**Table 2: Cumulative respiratory virus detections from August 28, 2022 to August 19, 2023 (surveillance weeks 2022-35 to 2023-33)**

Reporting Laboratory	SARS-CoV-2 Tested	SARS-CoV-2 Positive	Flu Tested	A(H1)pdm09 Positive	A(H3) Positive	A(UnS) Positive	Total Flu A Positive	Total Flu B Positive	RSV Tested	RSV Positive	HPIV Tested	HPIV 1 Positive	HPIV 2 Positive	HPIV 3 Positive	HPIV 4 Positive	Other HPIV Positive	ADV Tested	ADV Positive	HMPV Tested	HMPV Positive	EV/RV Tested	EV/RV Positive	HCoV Tested	HCoV Positive
Newfoundland	25610	4316	15105	8	246	680	934	11	15105	648	15105	75	33	388	170	0	15105	323	15105	386	15105	1403	15105	573
Prince Edward Island	33914	7358	4127	1	119	248	368	4	4127	384	1203	21	27	81	8	0	1203	82	1203	39	1203	350	1203	35
Nova Scotia	141381	26882	48693	0	4	3661	3665	15	48684	2434	1654	15	17	36	8	0	1661	69	1651	45	1661	327	1661	65
New Brunswick	113519	16254	53947	25	133	4439	4597	31	45858	2066	4366	41	35	166	8	0	4366	300	4366	188	4366	808	4311	236
<b>Atlantic</b>	<b>314424</b>	<b>54810</b>	<b>121872</b>	<b>34</b>	<b>502</b>	<b>9028</b>	<b>9564</b>	<b>61</b>	<b>113774</b>	<b>5532</b>	<b>22328</b>	<b>152</b>	<b>112</b>	<b>671</b>	<b>194</b>	<b>0</b>	<b>22335</b>	<b>774</b>	<b>22325</b>	<b>658</b>	<b>22335</b>	<b>2888</b>	<b>22280</b>	<b>909</b>
Région Nord-Est	106326	12268	65572	2	4	3896	3902	112	18646	1410	2215	33	13	96	17	0	2216	184	2193	100	N.C.	N.C.	2216	113
Québec-Chaudière-Appalaches	209310	19581	30438	0	0	2910	2910	185	29756	1979	9339	26	7	98	28	0	10202	810	9339	371	N.C.	N.C.	9339	345
Centre-du-Québec	171157	22421	17860	0	0	1788	1788	124	16090	1007	1405	17	3	57	22	0	1405	144	1405	78	N.C.	N.C.	1405	72
Montréal-Laval	240589	28325	117658	2	9	6409	6420	1593	68129	2865	28862	159	43	633	134	0	28873	1165	29026	865	N.C.	N.C.	28555	824
Ouest du Québec	127912	15897	27158	0	7	2207	2214	193	26241	1494	1271	22	1	70	15	0	1270	211	1271	65	N.C.	N.C.	1272	63
Montréal	159711	17729	54530	0	0	3120	3120	286	48123	1909	212	0	0	2	0	0	212	5	212	6	N.C.	N.C.	212	6
<b>Province of Québec</b>	<b>1015005</b>	<b>116221</b>	<b>313216</b>	<b>4</b>	<b>20</b>	<b>20330</b>	<b>20354</b>	<b>2493</b>	<b>206985</b>	<b>10664</b>	<b>43304</b>	<b>257</b>	<b>67</b>	<b>956</b>	<b>216</b>	<b>0</b>	<b>44178</b>	<b>2519</b>	<b>43446</b>	<b>1485</b>	<b>N.C.</b>	<b>N.C.</b>	<b>42999</b>	<b>1423</b>
P.H.O.L. - Ottawa	30611	7738	6528	28	136	66	224	3	6528	355	4621	0	0	0	0	143	4621	21	4621	115	4621	482	4621	212
EOCLA	98917	9220	19615	0	0	1426	1426	61	19615	1332	1640	13	14	61	20	0	1640	58	1640	64	1640	354	1640	102
P.H.O.L. - Kingston	32520	5097	3700	9	92	38	138	3	3697	180	2950	0	0	0	0	157	2951	32	2950	81	2950	382	2950	106
UHN / Mount Sinai Hospital	108221	7864	29933	7	44	364	415	62	29933	326	2503	2	2	65	4	0	2470	9	2503	16	2503	104	2503	98
P.H.O.L. - Toronto	55823	11784	36084	193	2420	157	1187	77	36047	1364	32207	0	0	0	0	1556	32211	711	32204	1109	32207	3572	32204	1398
Sick Kids Hospital - Toronto	0	0	0	0	0	0	0	0	0	0	0	0	0	0	0	0	0	0	0	0	0	0	0	0
Shared Hospital Laboratory	96501	6510	96500	150	1479	731	2360	393	96501	2244	73804	4	0	16	0	979	73817	825	74119	969	74067	2758	73959	1076
P.H.O.L. - Sault Ste. Marie	1908	346	777	1	52	15	58	0	777	25	684	0	0	0	0	54	684	5	684	31	684	58	684	44
P.H.O.L. - Timmins	9629	924	1220	0	161	6	156	0	1218	98	1113	0	0	0	0	56	1113	14	1113	29	1113	103	1113	49
St. Joseph's - London	131808	15671	21590	0	0	886	886	76	21590	1016	2751	0	0	0	0	96	2785	93	2785	74	2785	381	2374	108
P.H.O.L. - London	40290	8309	13150	18	587	63	650	28	13149	891	10749	0	0	0	0	566	10750	153	10750	267	10749	1162	10750	330
P.H.O.L. - Orillia	723	288	2694	6	261	23	290	16	2694	238	2614	0	0	0	0	157	2615	88	2614	83	2614	400	2614	108
P.H.O.L. - Thunder Bay	9004	1805	1267	0	107	3	110	0	1266	96	1116	0	0	0	0	38	1116	21	1116	29	1116	152	1117	40
P.H.O.L. - Sudbury	2222	327	903	1	65	14	67	0	903	79	782	0	0	0	0	30	782	9	782	51	782	63	782	25
P.H.O.L. - Hamilton	27999	7280	10902	38	305	92	418	41	10899	560	8320	0	0	0	0	376	8322	229	8320	268	8320	882	8320	302
P.H.O.L. - Peterborough	5756	1058	2202	4	69	11	84	19	2200	118	1841	0	0	0	0	80	1841	56	1841	50	1841	366	1841	50
St. Joseph's - Hamilton	113728	14370	61687	0	0	2783	2783	531	61687	2309	61687	0	0	1190	0	0	61687	1052	61687	975	61687	3966	0	0
Sault Area Hospital	13247	2177	9158	1	262	258	521	8	9158	173	3317	38	9	74	4	0	3317	62	3317	101	3317	370	3324	88
<b>Province of Ontario</b>	<b>778907</b>	<b>100768</b>	<b>317910</b>	<b>456</b>	<b>6040</b>	<b>6936</b>	<b>11773</b>	<b>1318</b>	<b>317862</b>	<b>11404</b>	<b>212699</b>	<b>57</b>	<b>25</b>	<b>1406</b>	<b>28</b>	<b>4288</b>	<b>212722</b>	<b>3438</b>	<b>213046</b>	<b>4312</b>	<b>212996</b>	<b>15555</b>	<b>150796</b>	<b>4136</b>
Manitoba	83125	12545	52651	18	205	1819	2042	87	52651	1811	6244	48	56	179	16	0	6234	190	6838	229	6244	1138	6838	225
Saskatchewan	181281	14181	48499	7	41	3997	4045	82	40204	2218	16686	169	135	534	116	0	16688	504	16688	688	16689	2062	16684	544
Alberta	269013	35807	157965	1108	7312	2854	11274	795	141829	7692	54544	404	200	988	151	0	54524	854	53731	1268	53641	5540	54543	1358
<b>Prairies</b>	<b>533419</b>	<b>62533</b>	<b>259115</b>	<b>1133</b>	<b>7558</b>	<b>8670</b>	<b>17361</b>	<b>964</b>	<b>234684</b>	<b>11721</b>	<b>77474</b>	<b>621</b>	<b>391</b>	<b>1701</b>	<b>283</b>	<b>0</b>	<b>77446</b>	<b>1548</b>	<b>77257</b>	<b>2185</b>	<b>76574</b>	<b>8740</b>	<b>78065</b>	<b>2127</b>
British Columbia	261681	27881	156624	609	4366	315	9226	331	148537	8279	35811	445	245	1193	348	6	35779	1300	35779	1222	34619	5446	34639	1207
Yukon	5633	424	1102	3	136	0	142	9	1100	61	N.C.	N.C.	N.C.	N.C.	N.C.	N.C.	N.C.	N.C.	N.C.	N.C.	N.C.	N.C.	N.C.	N.C.
Northwest Territories	1824	195	1658	10	147	1	158	5	1658	115	N.C.	N.C.	N.C.	N.C.	N.C.	N.C.	N.C.	N.C.	N.C.	N.C.	N.C.	1658	351	N.C.
Nunavut	5750	399	3495	8	230	3	241	234	3495	166	N.C.	N.C.	N.C.	N.C.	N.C.	N.C.	N.C.	N.C.	N.C.	N.C.	N.C.	N.C.	N.C.	N.C.
<b>Territories</b>	<b>13207</b>	<b>1018</b>	<b>6255</b>	<b>21</b>	<b>513</b>	<b>4</b>	<b>541</b>	<b>248</b>	<b>6253</b>	<b>342</b>	<b>N.C.</b>	<b>N.C.</b>	<b>N.C.</b>	<b>N.C.</b>	<b>N.C.</b>	<b>N.C.</b>	<b>N.C.</b>	<b>N.C.</b>	<b>N.C.</b>	<b>N.C.</b>	<b>1658</b>	<b>351</b>	<b>N.C.</b>	<b>N.C.</b>
<b>CANADA</b>	<b>2916643</b>	<b>363231</b>	<b>1174992</b>	<b>2257</b>	<b>18999</b>	<b>45283</b>	<b>68819</b>	<b>5415</b>	<b>1028095</b>	<b>47942</b>	<b>391616</b>	<b>1532</b>	<b>840</b>	<b>5927</b>	<b>1069</b>	<b>4294</b>	<b>392460</b>	<b>9579</b>	<b>391853</b>	<b>9862</b>	<b>348182</b>	<b>32980</b>	<b>328779</b>	<b>9802</b>

The data in the RVDSS report represent surveillance data available at the time of writing. Data not collected by reporting lab denoted by N.C.

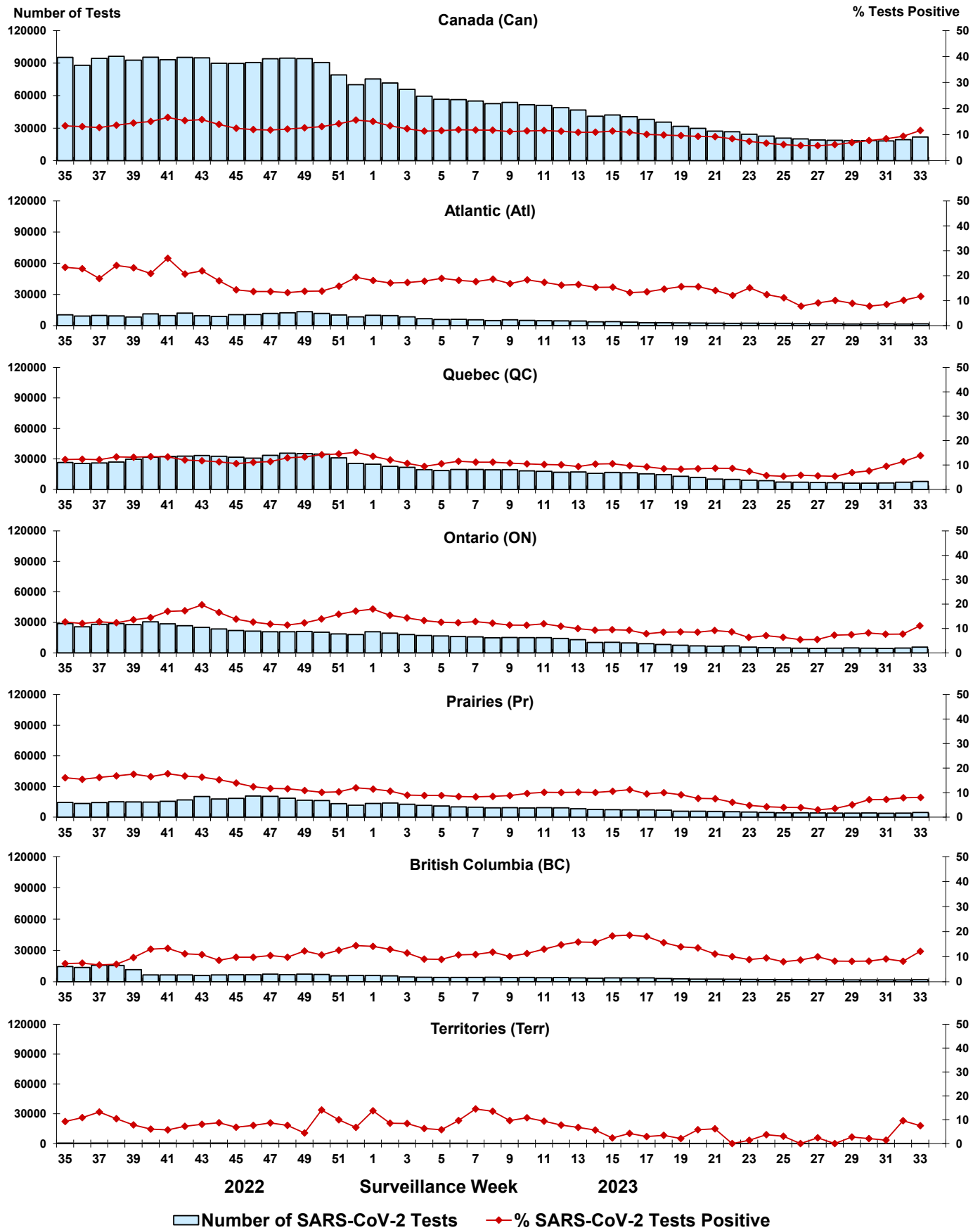
Some specimens from Yukon (YT) are sent to reference laboratories in British Columbia and reported results reflect specimens identified as originating from YT.

Results from British Columbia comprise of specimens from the following sites: Children's and Women's Hospital Laboratory, Fraser Health Medical Microbiology Laboratory, Island Health, Providence Health Care, Vancouver Coastal Health sites, Victoria General Hospital, BCCDC Public Health Laboratory, Interior Health Authority sites and Northern Health Authority sites.

Due to different testing protocols of laboratories across Canada, influenza A subtype detection counts may not be included in total influenza A detection counts. Total influenza A and B positive counts are used to calculate percentage of tests positive.

Delays in the reporting of data may cause data to change retrospectively. Due to these delays, the sum of weekly report totals do not add up to cumulative totals.

Figure 3: Positive severe acute respiratory syndrome coronavirus 2 (SARS-CoV-2) tests (%) in Canada by region by surveillance week



Note: Differences in positivity between jurisdictions can reflect differences in testing practices. Please interpret with caution.

Figure 4: Positive Influenza (Flu) tests (%) in Canada by region by surveillance week

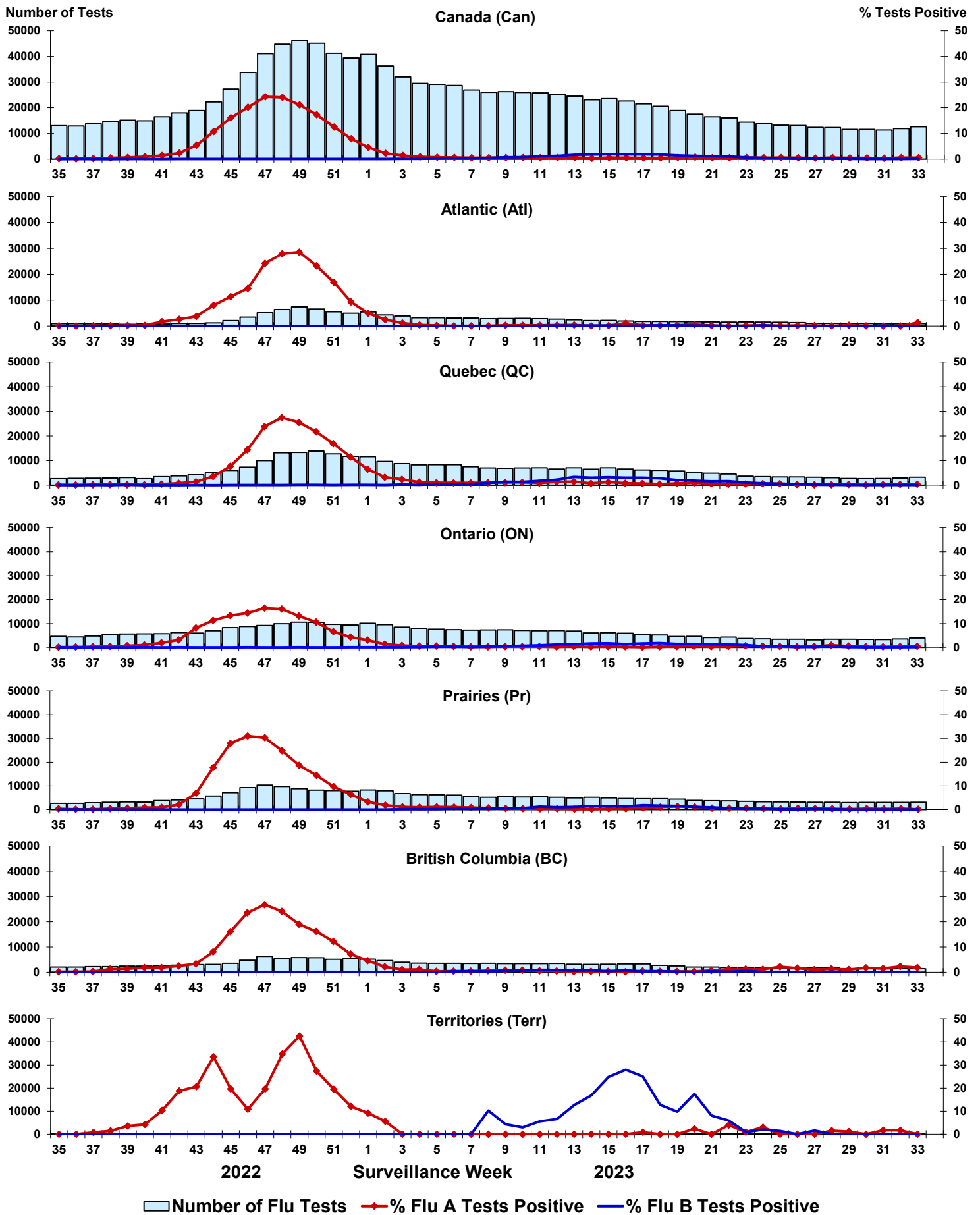


Figure 5: Positive Respiratory syncytial virus (RSV) tests (%) in Canada by region by surveillance week

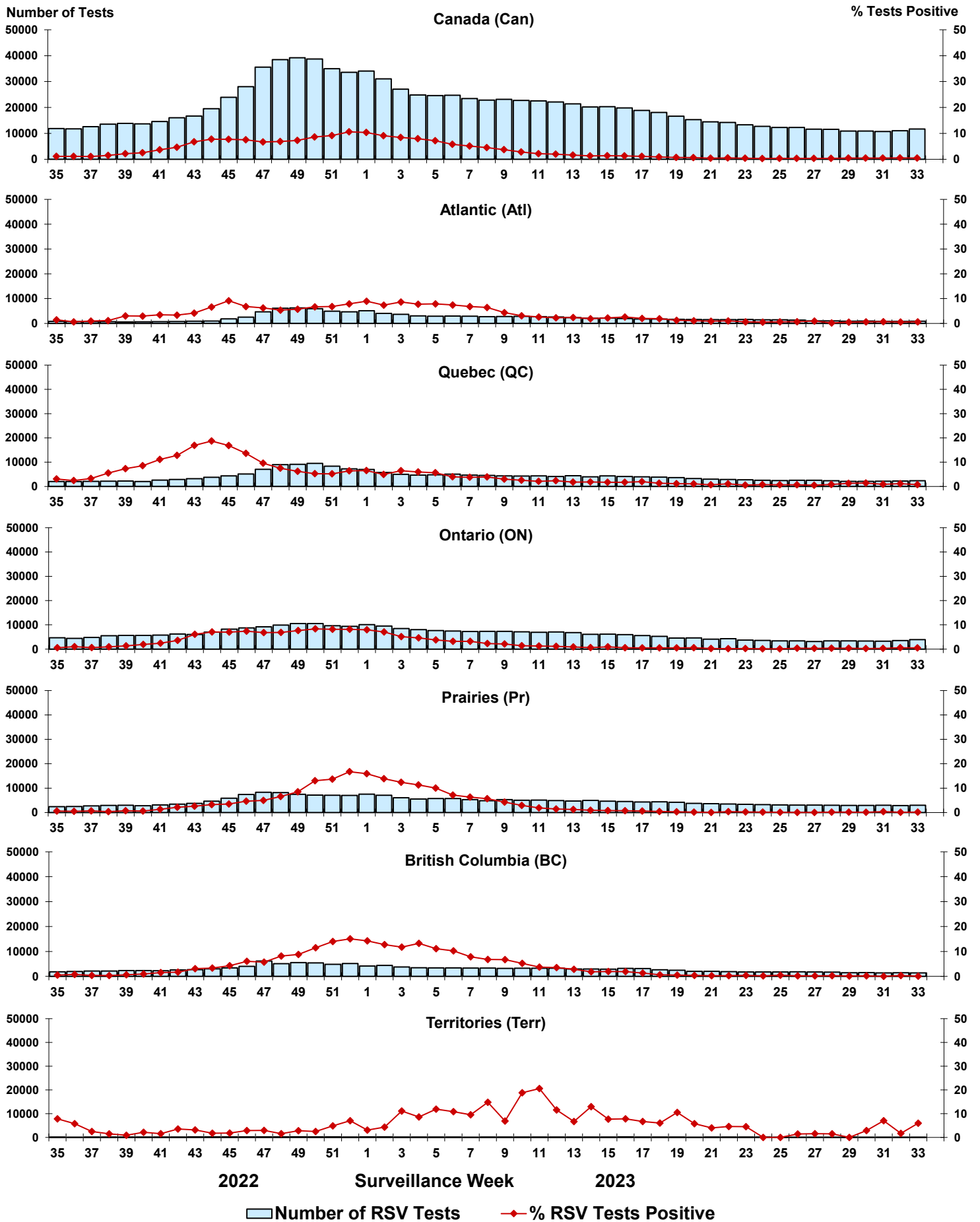




Figure 6: Positive Human parainfluenza virus (HPIV) tests (%) in Canada by region by surveillance week

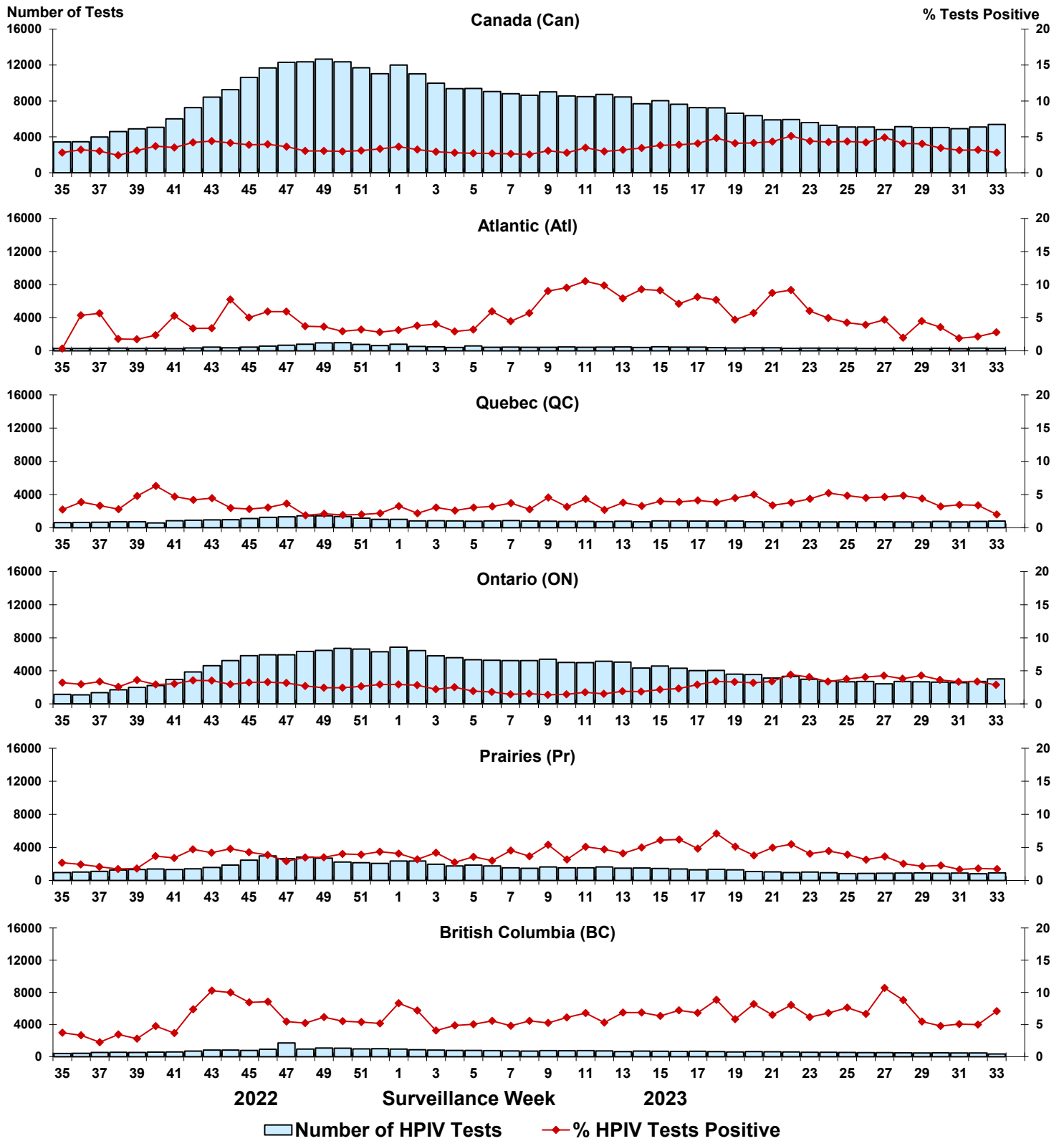


Figure 7: Positive Adenovirus (ADV) tests (%) in Canada by region by surveillance week

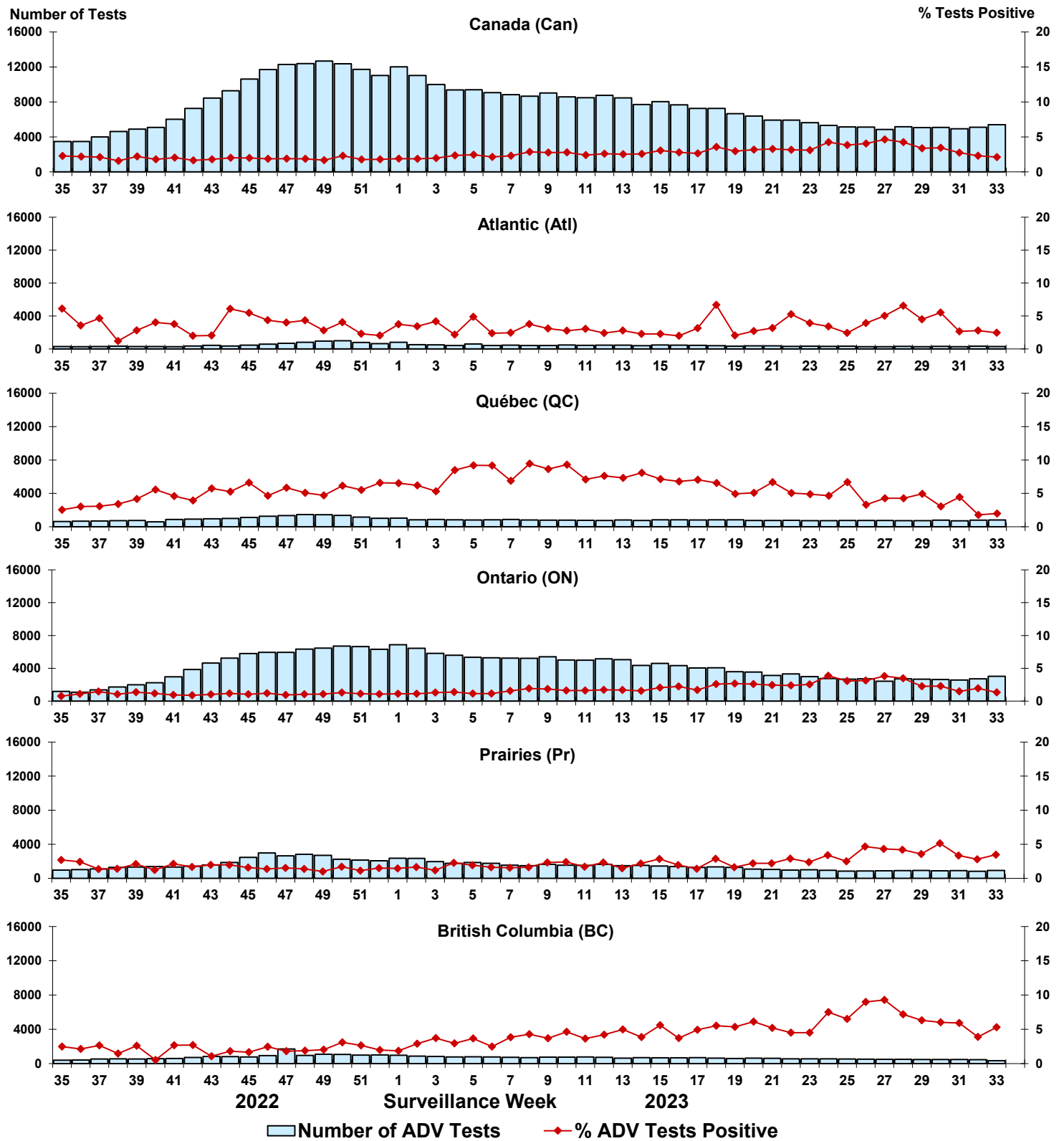


Figure 8: Positive Human metapneumovirus (HMPV) tests (%) in Canada by region by surveillance week

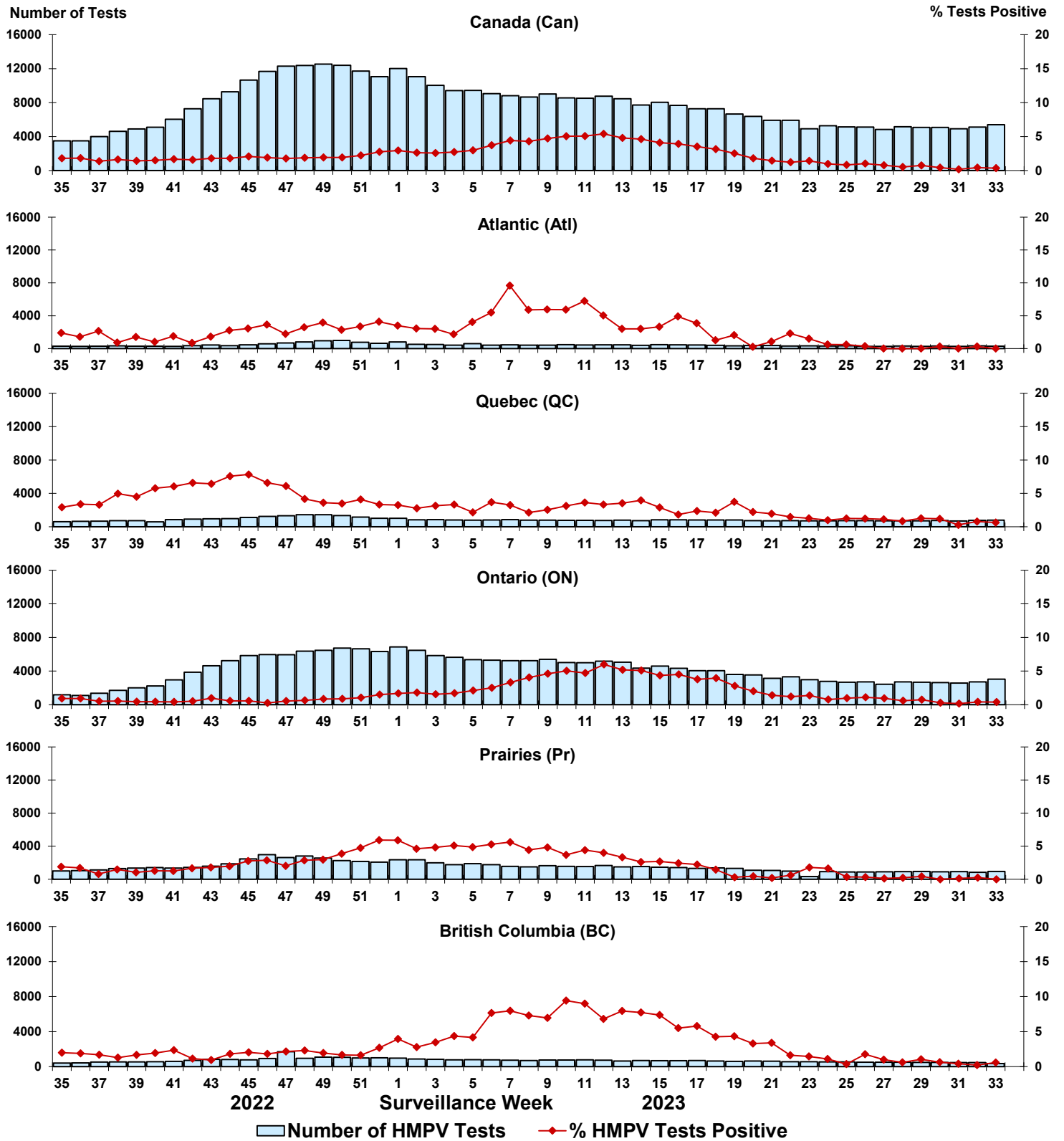


Figure 9: Positive Enterovirus/Rhinovirus (EV/RV) tests (%) in Canada by region by surveillance week

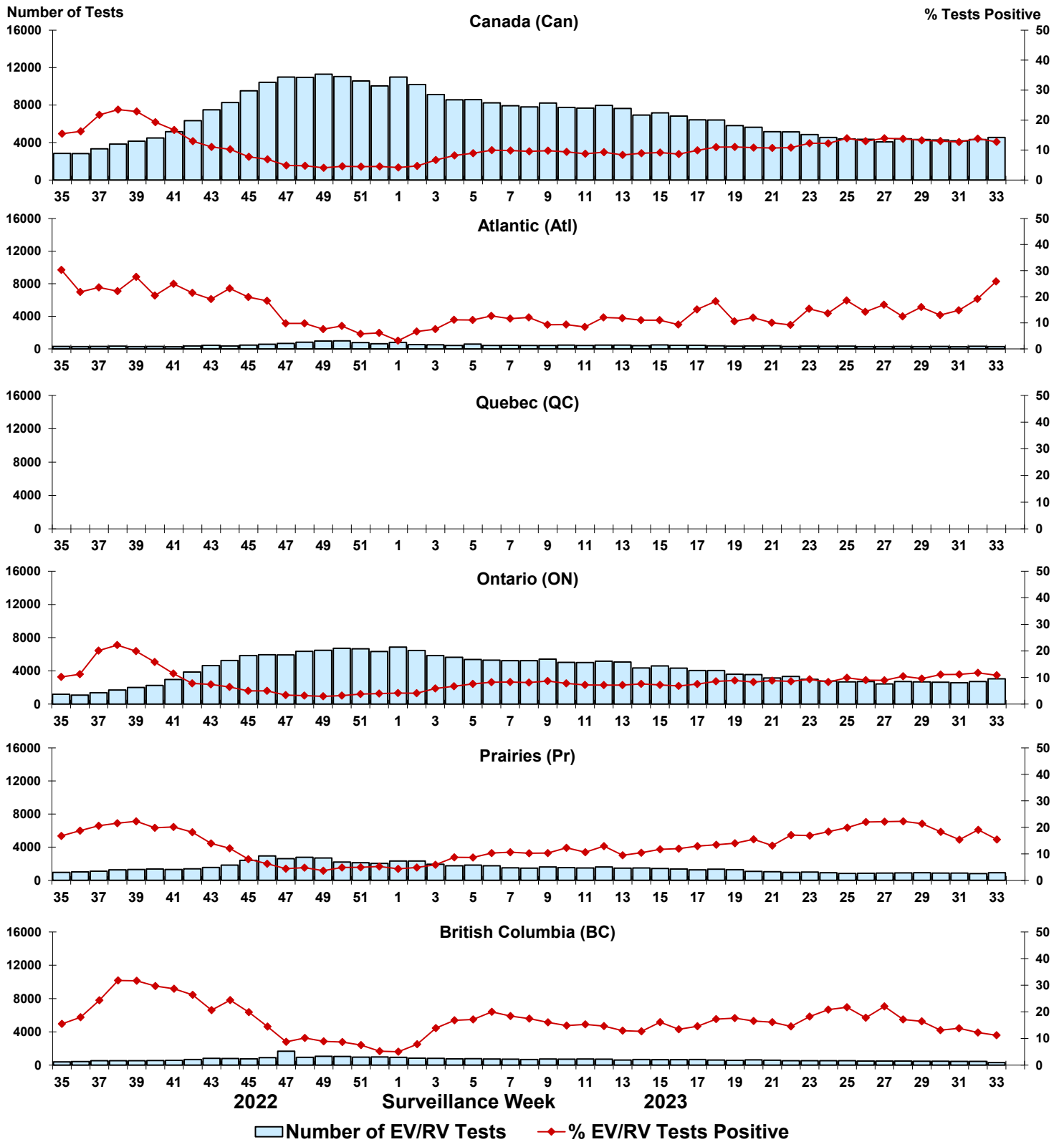


Figure 10: Positive Human coronavirus (HCoV) tests (%) in Canada by region by surveillance week

