

Respiratory Virus Report, Week 9 - ending March 6, 2021

The Respiratory Virus Detection Surveillance System collects data from select laboratories across Canada on the number of tests performed and the number of tests positive for influenza and other respiratory viruses. Data are reported on a weekly basis year-round to the Centre for Immunization and Respiratory Infectious Diseases (CIRID), Public Health Agency of Canada. These data are also summarized in the weekly FluWatch report.

In this Respiratory Virus Report, the number of detections of coronavirus reflects only seasonal human coronaviruses, not the novel pandemic coronavirus (SARS-CoV2) that causes COVID-19. For information on COVID-19, see the [Coronavirus disease \(COVID-19\): Outbreak](#)

Table 1: Respiratory Virus Detections/Isolations for the week ending March 6, 2021 (Reporting Week 202109)

Reporting Laboratory	Flu Tested	A(H1N1)pdm09 Positive	A(H3) Positive	A(UnS) Positive	Total Flu A Positive	Total Flu B Positive	RSV Tested	RSV Positive	PIV Tested	PIV 1 Positive	PIV 2 Positive	PIV 3 Positive	PIV 4 Positive	Other PIV Positive	Adeno Tested	Adeno Positive	hMPV Tested	hMPV Positive	Entero/Rhino Tested	Entero/Rhino Positive	Coron Tested	Coron Positive
Newfoundland	497	0	0	0	0	0	497	0	497	0	0	0	0	0	497	0	497	0	497	22	N.A.	N.A.
Prince Edward Island	168	0	0	0	0	0	168	0	168	0	0	0	0	0	168	1	168	0	168	12	168	0
Nova Scotia	435	0	0	0	0	0	435	0	13	0	0	0	0	0	13	0	13	0	13	2	13	0
New Brunswick	368	0	0	0	0	0	141	0	12	0	0	0	0	0	12	1	12	0	12	3	12	0
Atlantic	1468	0	0	0	0	0	1241	0	690	0	0	0	0	0	690	2	690	0	690	39	193	0
Région Nord-Est	145	0	0	0	0	0	15	0	0	0	0	0	0	0	0	0	0	0	N.A.	N.A.	0	0
Québec-Chaudière-Appalaches	9	0	0	0	0	0	7	0	0	0	0	0	0	0	0	0	0	0	N.A.	N.A.	0	0
Centre-du-Québec	34	0	0	0	0	0	34	0	10	0	0	0	0	0	10	0	10	0	N.A.	N.A.	10	0
Montréal-Laval	273	0	0	0	0	0	273	0	114	0	0	1	0	0	114	6	114	0	N.A.	N.A.	114	7
Ouest du Québec	123	0	0	0	0	0	120	0	0	0	0	0	0	0	0	0	0	0	N.A.	N.A.	0	0
Montérégie	78	0	0	0	0	0	78	0	0	0	0	0	0	0	0	0	0	0	N.A.	N.A.	0	0
Province of Québec	662	0	0	0	0	0	527	0	124	0	0	1	0	0	124	6	124	0	N.A.	N.A.	124	7
P.H.O.L. - Ottawa	13	0	0	0	0	0	13	0	8	0	0	0	0	0	8	0	8	0	8	0	8	1
CHEO - Ottawa	N.A.	N.A.	N.A.	N.A.	N.A.	N.A.	N.A.	N.A.	N.A.	N.A.	N.A.	N.A.	N.A.	N.A.	N.A.	N.A.	N.A.	N.A.	N.A.	N.A.	N.A.	N.A.
P.H.O.L. - Kingston	15	0	0	0	0	0	15	0	9	0	0	0	0	0	9	0	9	0	9	0	9	0
UHN / Mount Sinai Hospital	474	0	0	0	0	0	474	0	451	1	0	0	0	0	451	0	451	0	451	0	451	0
P.H.O.L. - Toronto	142	0	0	0	0	0	142	0	72	0	0	0	0	0	72	0	72	0	72	1	72	0
Sick Kids Hospital - Toronto	N.A.	N.A.	N.A.	N.A.	N.A.	N.A.	N.A.	N.A.	N.A.	N.A.	N.A.	N.A.	N.A.	N.A.	N.A.	N.A.	N.A.	N.A.	N.A.	N.A.	N.A.	N.A.
Sunnybrook & Women's College HSC	N.A.	N.A.	N.A.	N.A.	N.A.	N.A.	N.A.	N.A.	N.A.	N.A.	N.A.	N.A.	N.A.	N.A.	N.A.	N.A.	N.A.	N.A.	N.A.	N.A.	N.A.	N.A.
P.H.O.L. - Sault Ste. Marie	6	0	0	0	0	0	6	0	4	0	0	0	0	0	4	0	4	0	4	0	4	0
P.H.O.L. - Timmins	3	0	0	0	0	0	3	0	2	0	0	0	0	0	2	0	2	0	2	0	2	0
St. Joseph's - London	N.A.	N.A.	N.A.	N.A.	N.A.	N.A.	N.A.	N.A.	N.A.	N.A.	N.A.	N.A.	N.A.	N.A.	N.A.	N.A.	N.A.	N.A.	N.A.	N.A.	N.A.	N.A.
P.H.O.L. - London	29	0	0	0	0	0	29	0	9	0	0	0	0	0	9	0	9	0	9	0	9	0
P.H.O.L. - Orillia	15	0	0	0	0	0	15	0	0	0	0	0	0	0	0	0	0	0	0	0	0	0
P.H.O.L. - Thunder Bay	6	0	0	0	0	0	6	0	6	0	0	0	0	0	6	0	6	0	6	0	6	0
P.H.O.L. - Sudbury	19	0	0	0	0	0	19	0	2	0	0	0	0	0	2	0	2	0	2	0	2	0
P.H.O.L. - Hamilton	26	0	0	0	0	0	26	0	20	0	0	0	0	0	20	0	20	0	20	2	20	0
P.H.O.L. - Peterborough	16	0	0	0	0	0	16	0	13	0	0	0	0	0	13	0	13	0	13	0	13	0
St. Joseph's - Hamilton	332	0	0	0	0	0	332	0	332	0	0	0	0	0	332	0	332	0	332	8	0	0
Province of Ontario	1096	0	0	0	0	0	1096	0	928	1	0	0	0	0	928	0	928	0	928	11	596	1
Province of Manitoba	1134	0	0	0	0	0	1134	0	61	0	0	0	0	0	61	0	100	0	61	3	100	0
Province of Saskatchewan	9805	0	0	0	0	0	1515	0	20	0	0	0	0	0	20	0	20	0	20	2	20	0
Province of Alberta	2377	0	0	0	0	0	689	0	689	0	0	0	0	0	689	1	689	0	689	47	689	0
Prairies	13316	0	0	0	0	0	3338	0	770	0	0	0	0	0	770	1	809	0	770	52	809	0
British Columbia	2856	0	0	0	0	0	2844	0	388	0	0	0	0	0	388	2	388	0	383	24	369	0
Yukon	69	0	0	0	0	0	69	0	N.A.	N.A.	N.A.	N.A.	N.A.	N.A.	N.A.	N.A.	N.A.	N.A.	N.A.	N.A.	N.A.	N.A.
Northwest Territories	10	0	0	0	0	0	7	0	7	0	0	0	0	0	7	0	7	0	7	0	7	0
Nunavut	0	0	0	0	0	0	0	0	0	0	0	0	0	0	0	0	0	0	0	0	0	0
Territories	79	0	0	0	0	0	76	0	7	0	0	0	0	0	7	0	7	0	7	0	7	0
CANADA	19477	0	0	0	0	0	9122	0	2907	1	0	1	0	0	2907	11	2946	0	2778	126	2098	8

The data in the RVDSS report represent surveillance data available at the time of writing. Missing data are denoted by N.A.

Specimens from Yukon (YT), Northwest Territories (NT) and Nunavut (NU) are sent to reference laboratories in other provinces and reported results reflect specimens identified as originating from YT, NT or NU.

Results from British Columbia comprise of specimens from the following sites: BC Children's and Women's Hospital, Fraser Health Medical Microbiology Laboratory, Island Health, Providence Health Care, Powell River Hospital, St. Paul's Hospital, Vancouver General Hospital, Victoria General Hospital, BCCDC Public Health Laboratory, Interior Health Authority sites and Northern Health Authority sites.

Delays in the reporting of data may cause data to change retrospectively.

Influenza co-detections may cause the sum of A(H1N1)pdm09, A(H3), and A(UnS) positive results to exceed the sum of Total Flu A Positive results.

Table 2: Respiratory Virus Detections/Isolations for the period August 23, 2020 - March 6, 2021 (Reporting Weeks 202035-202109)

Reporting Laboratory	Flu Tested	A(H1N1)pdm09 Positive	A(H3) Positive	A(UnS) Positive	Total Flu A Positive	Total Flu B Positive	RSV Tested	RSV Positive	PIV Tested	PIV 1 Positive	PIV 2 Positive	PIV 3 Positive	PIV 4 Positive	Other PIV Positive	Adeno Tested	Adeno Positive	hMPV Tested	hMPV Positive	Entero/Rhino Tested	Entero/Rhino Positive	Coron Tested	Coron Positive
Newfoundland	8358	0	0	0	0	0	8358	10	8358	1	0	1	0	0	8369	40	8237	2	8358	1938	N.A.	N.A.
Prince Edward Island	2264	0	0	0	0	0	2264	3	2260	2	0	0	0	0	2260	29	2260	0	2260	252	2260	0
Nova Scotia	2475	0	0	0	0	0	2478	0	386	0	0	0	0	0	386	7	386	0	386	59	386	0
New Brunswick	48809	0	0	0	1	1	16782	0	550	0	0	0	0	0	541	8	541	0	541	48	496	0
Atlantic	61906	0	0	0	0	1	29882	13	11554	3	0	1	0	0	11556	84	11424	2	11545	2297	3142	0
Région Nord-Est	2700	0	0	0	0	0	818	1	0	0	0	0	0	0	0	0	0	0	N.A.	N.A.	0	0
Québec-Chaudière-Appalaches	645	0	0	1	1	0	703	0	422	0	0	0	0	0	424	24	419	0	N.A.	N.A.	402	6
Centre-du-Québec	678	0	0	0	0	0	687	1	221	0	0	0	0	0	219	16	221	0	N.A.	N.A.	218	0
Montréal-Laval	5256	0	0	0	0	0	4300	4	2944	0	0	1	0	0	2998	109	2929	0	N.A.	N.A.	2929	16
Ouest du Québec	1049	0	0	0	0	0	992	0	0	0	0	0	0	0	0	0	0	0	N.A.	N.A.	0	0
Montérégie	133	0	0	0	0	0	133	0	0	0	0	0	0	0	0	0	0	0	N.A.	N.A.	0	0
Province of Québec	10461	0	0	1	1	0	7633	6	3587	0	0	1	0	0	3641	149	3569	0	N.A.	N.A.	3549	22
P.H.O.L. - Ottawa	418	0	0	0	0	0	418	1	359	0	0	0	0	0	359	0	358	0	359	20	358	1
CHEO - Ottawa	3772	0	0	1	1	1	3369	4	563	0	0	0	0	0	563	10	563	1	563	62	563	0
P.H.O.L. - Kingston	712	0	0	1	1	0	712	0	474	0	0	0	0	0	474	3	468	0	474	102	468	0
UHN / Mount Sinai Hospital	8555	2	0	1	3	1	8486	6	8096	3	2	3	8	0	6470	8	8056	8	7853	86	5892	5
P.H.O.L. - Toronto	4726	0	0	0	0	0	4723	2	4199	0	0	0	0	2	4200	11	4198	0	4199	144	4198	4
Sick Kids Hospital - Toronto	854	0	0	0	0	0	0	0	854	0	0	0	0	0	854	12	854	0	854	88	854	0
Sunnybrook & Women's College HSC	0	0	0	0	0	0	0	0	0	0	0	0	0	0	0	0	0	0	0	0	0	0
P.H.O.L. - Sault Ste. Marie	118	0	0	2	2	0	116	0	87	0	0	0	0	0	87	0	87	0	87	6	87	0
P.H.O.L. - Timmins	585	0	0	0	0	0	585	0	149	0	0	0	0	0	149	0	148	0	149	30	148	0
St. Joseph's - London	218	0	0	0	0	0	218	0	55	0	0	0	0	0	55	0	55	0	55	8	36	0
P.H.O.L. - London	1654	1	0	5	6	2	1644	0	1199	0	0	0	0	2	1199	2	1194	0	1199	124	1194	3
P.H.O.L. - Orillia	336	0	0	1	1	0	334	0	189	0	0	0	0	0	189	1	189	0	189	12	189	0
P.H.O.L. - Thunder Bay	365	0	0	0	0	0	365	0	353	0	0	0	0	0	354	2	353	0	353	132	353	0
P.H.O.L. - Sudbury	409	0	0	0	0	0	407	0	318	0	0	0	0	0	318	2	318	0	318	28	318	0
P.H.O.L. - Hamilton	1340	0	0	0	0	0	1289	1	1092	0	0	0	0	0	1092	2	1092	0	1092	95	1092	0
P.H.O.L. - Peterborough	397	0	0	1	1	0	351	0	264	0	0	0	0	0	264	0	264	0	264	20	264	0
St. Joseph's - Hamilton	7371	0	0	0	0	0	7371	1	7371	0	0	0	0	0	7371	18	7371	0	7371	395	0	0
Province of Ontario	31830	3	0	12	15	4	30388	15	25622	3	2	3	8	4	23998	71	25568	9	25415	1352	16014	13
Manitoba	35553	0	0	0	0	1	35543	68	2520	0	1	1	0	0	2520	17	2516	1	2520	127	2516	3
Province of Saskatchewan	48320	0	0	0	0	0	7875	3	1481	0	0	1	1	0	1481	10	1481	0	1481	151	1481	2
Province of Alberta	99484	4	0	6	10	0	70525	0	70525	2	18	2	5	0	70525	123	70525	11	70525	5899	70525	20
Prairies	183357	4	0	6	10	1	113943	71	74526	2	19	4	6	0	74526	150	74522	12	74526	6177	74522	25
British Columbia	60479	3	8	0	9	8	60321	5	12968	1	4	0	7	0	13517	66	13362	54	13194	1173	9251	18
Yukon	4349	0	0	8	8	7	4291	4	N.A.	N.A.	N.A.	N.A.	N.A.	N.A.	N.A.	N.A.	N.A.	N.A.	N.A.	N.A.	N.A.	N.A.
Northwest Territories	1083	0	0	0	0	0	1054	0	1054	0	0	0	1	0	1054	9	1054	1	1054	314	1054	0
Nunavut	1095	0	0	0	0	0	1083	0	1083	3	1	0	0	0	1083	25	1083	5	1083	280	183	0
Territories	6527	0	0	8	8	7	6428	4	2137	3	1	0	1	0	2137	34	2137	6	2137	594	1237	0
CANADA	354560	10	8	27	43	21	248595	114	130394	12	26	9	22	4	129375	554	130582	83	126817	11593	107715	78

The data in the RVDSS report represent surveillance data available at the time of writing. Missing data are denoted by N.A.

Specimens from YT, NT and NU are sent to reference laboratories in other provinces and reported results reflect specimens identified as originating from YT, NT or NU.

Results from British Columbia comprise of specimens from the following sites: BC Children's and Women's Hospital, Children's and Women's Hospital Laboratory, Fraser Health Medical Microbiology Laboratory, Island Health, Providence Health Care, Powell River Hospital, St. Paul's Hospital, Vancouver General Hospital, Victoria General Hospital, BCCDC Public Health Laboratory, Interior Health Authority sites and Northern Health Authority sites.

Delays in the reporting of data may cause data to change retrospectively.

Due to reporting delays, the sum of weekly report totals do not add up to cumulative totals.

Influenza co-detections may cause the sum of A(H1N1)pdm09, A(H3), and A(UnS) positive results to exceed the sum of Total Flu A Positive results.

Figure 1: Number positive laboratory tests for other respiratory viruses by report week, Canada, 2020-21

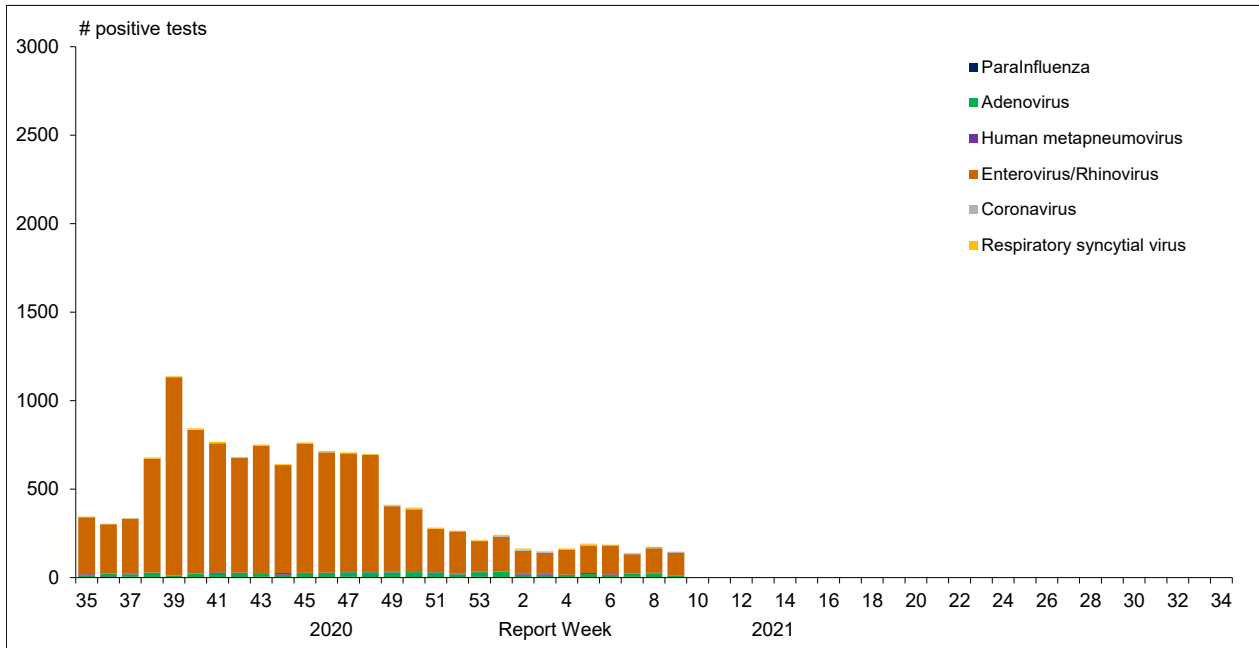


Figure 2 : Positive Influenza Tests (%) in Canada by Region by Week of Report

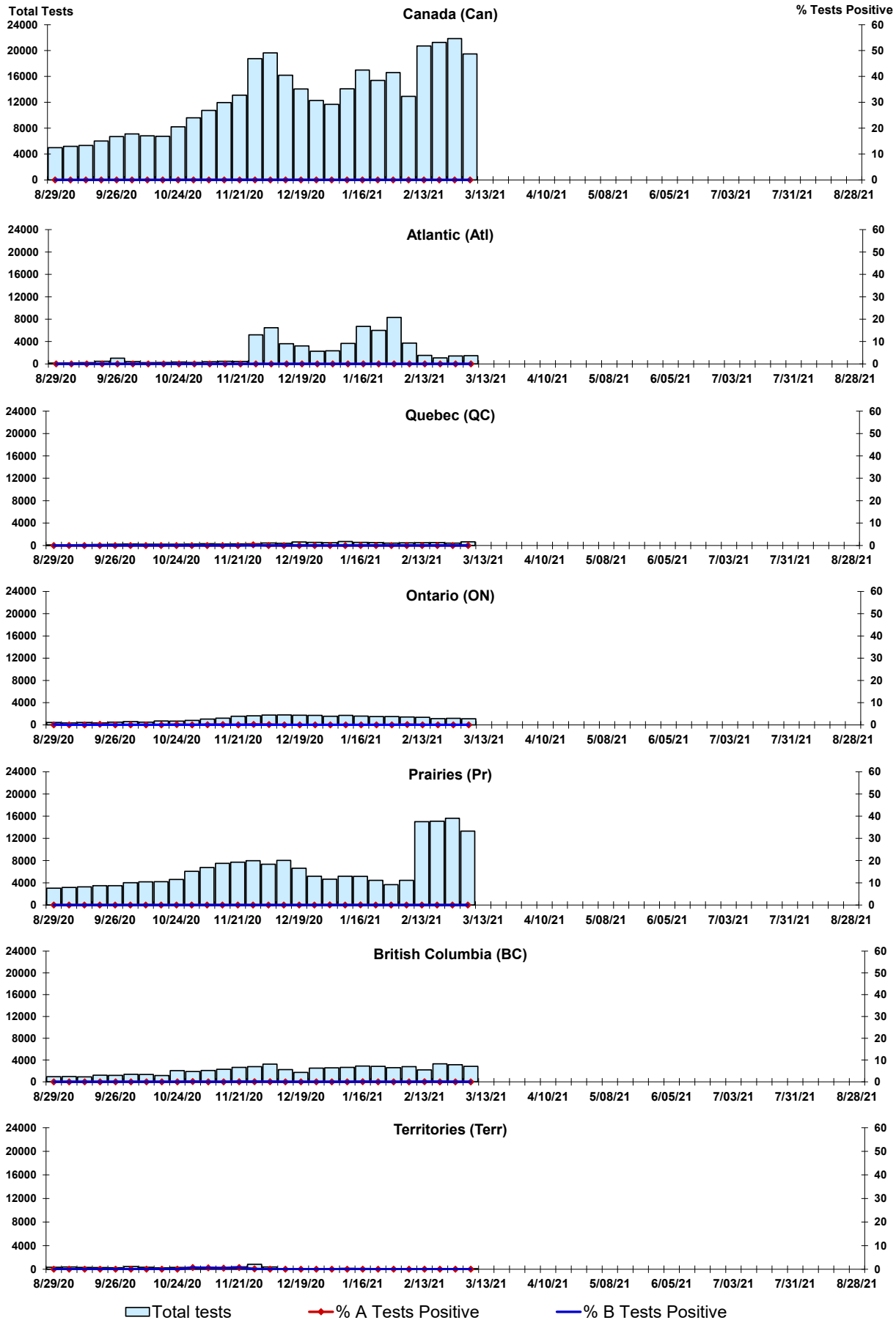


Figure 3: Positive Respiratory syncytial virus (RSV) Tests (%) in Canada by Region by Week of Report

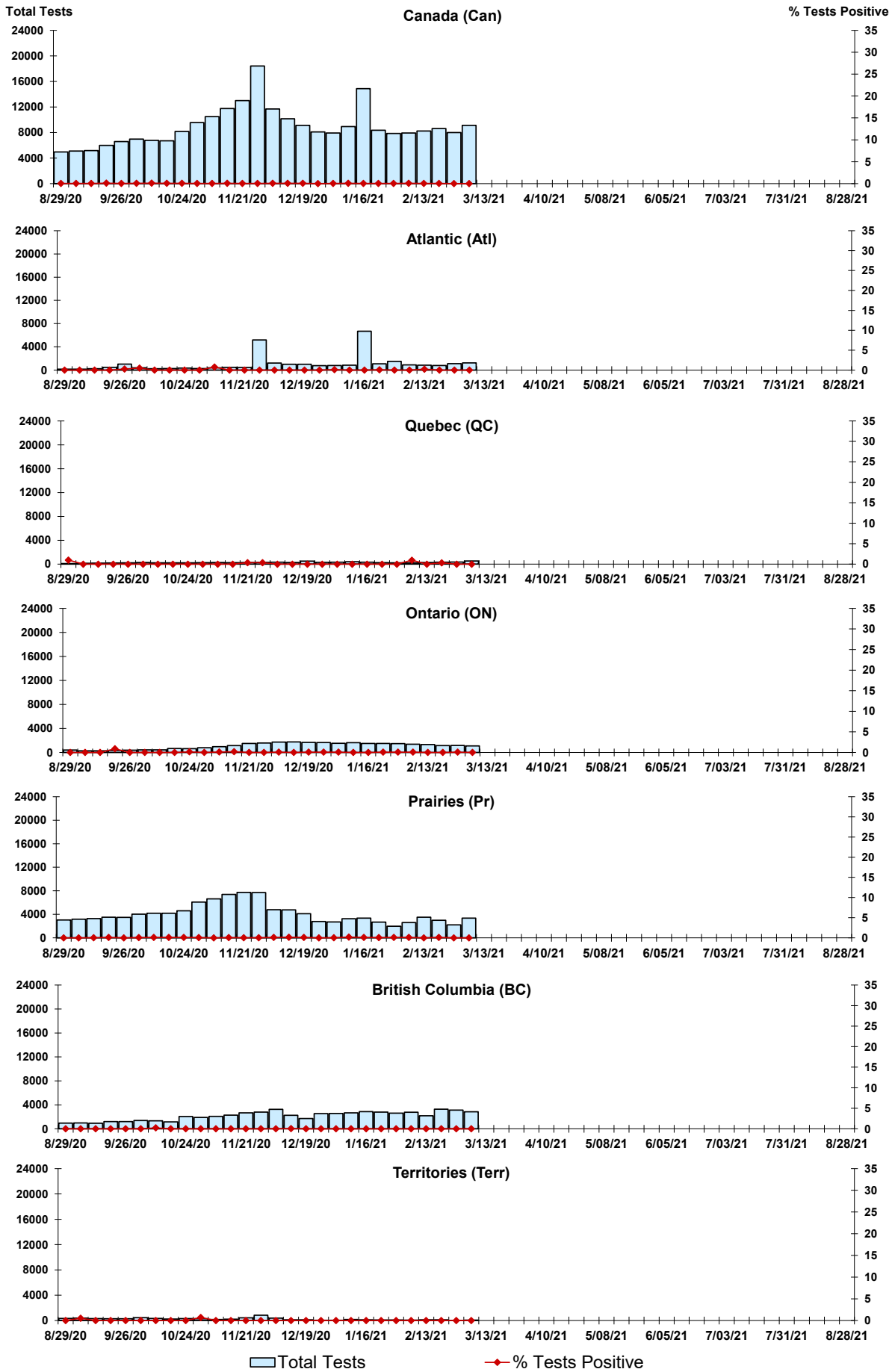


Figure 4: Positive Parainfluenza (PIV) Tests (%) in Canada by Region by Week of Report

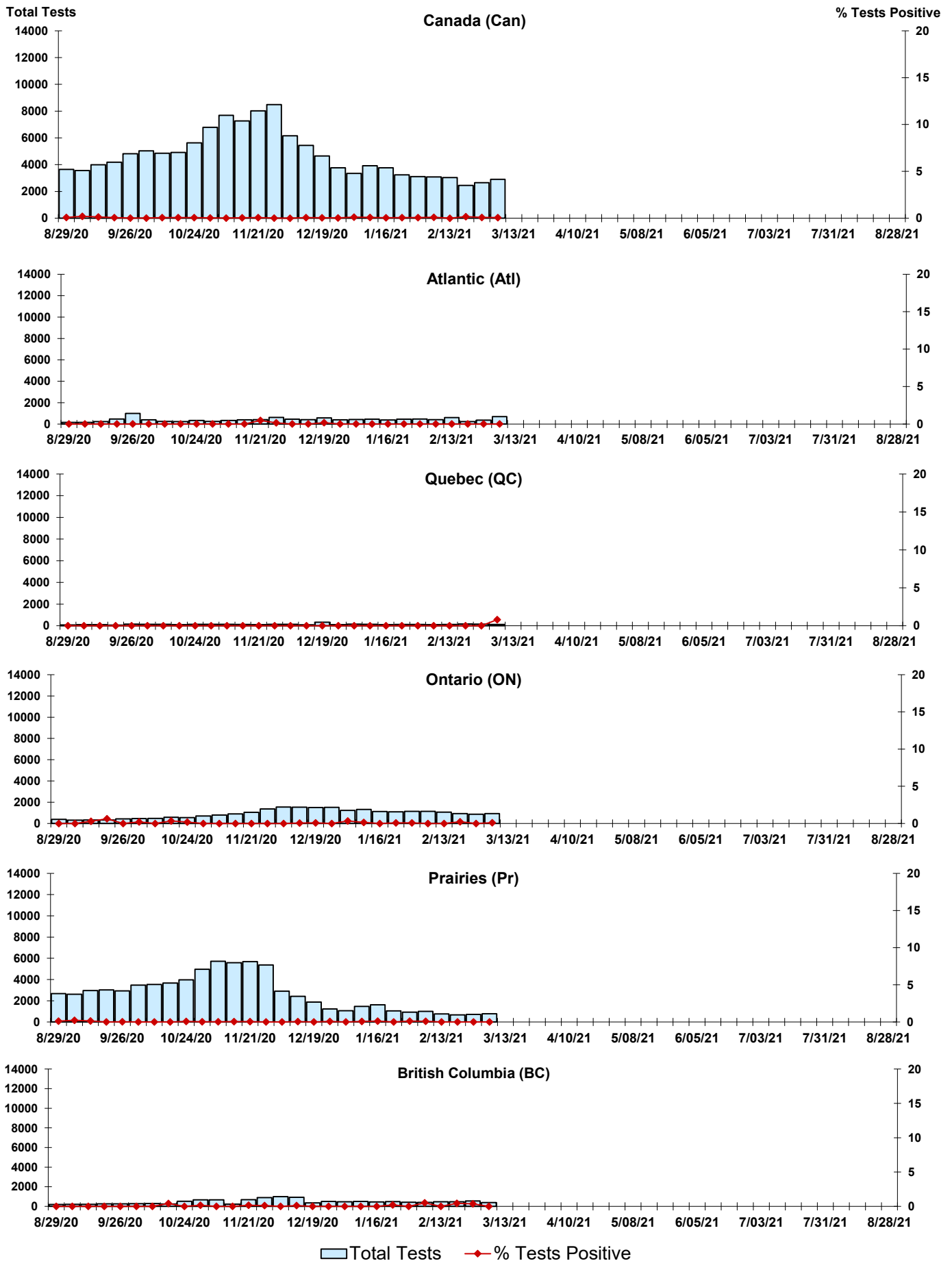


Figure 5: Positive Adenovirus (adeno) Tests (%) in Canada by Region by Week of Report

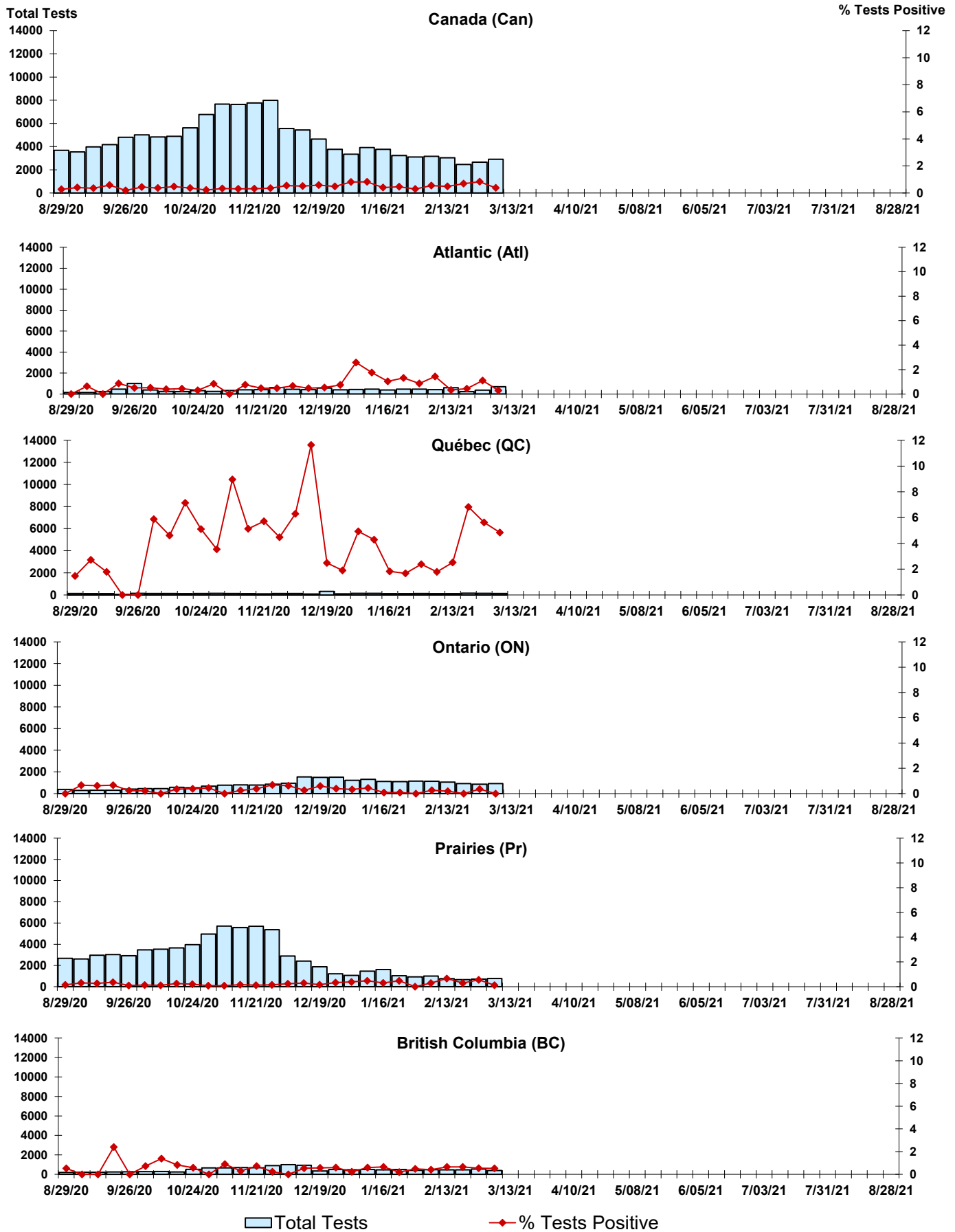


Figure 6: Positive human metapneumovirus (hMPV) Tests (%) in Canada by Region by Week of Report

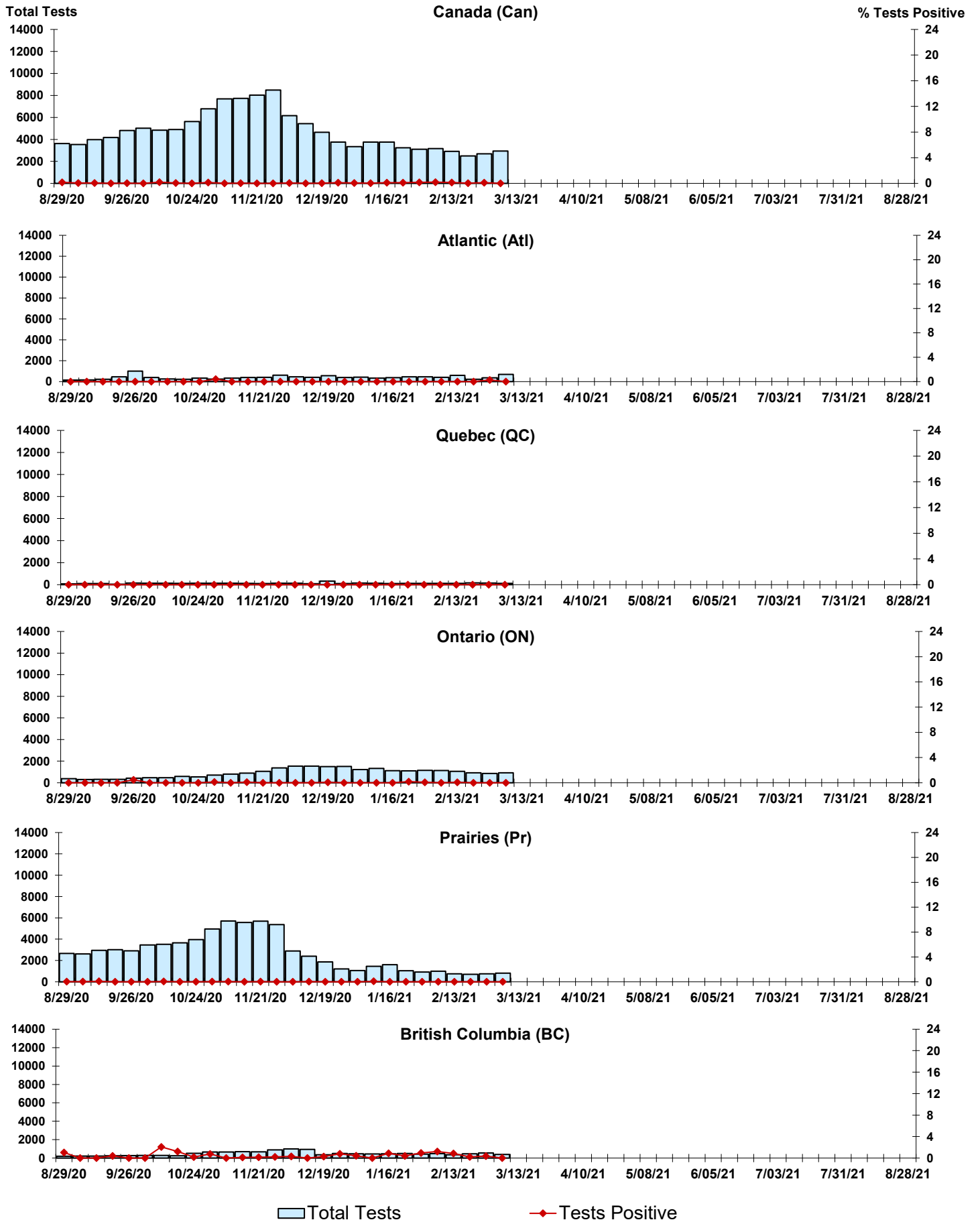


Figure 7: Positive Enterovirus/Rhinovirus (entero/rhino) Tests (%) in Canada by Region by Week of Report

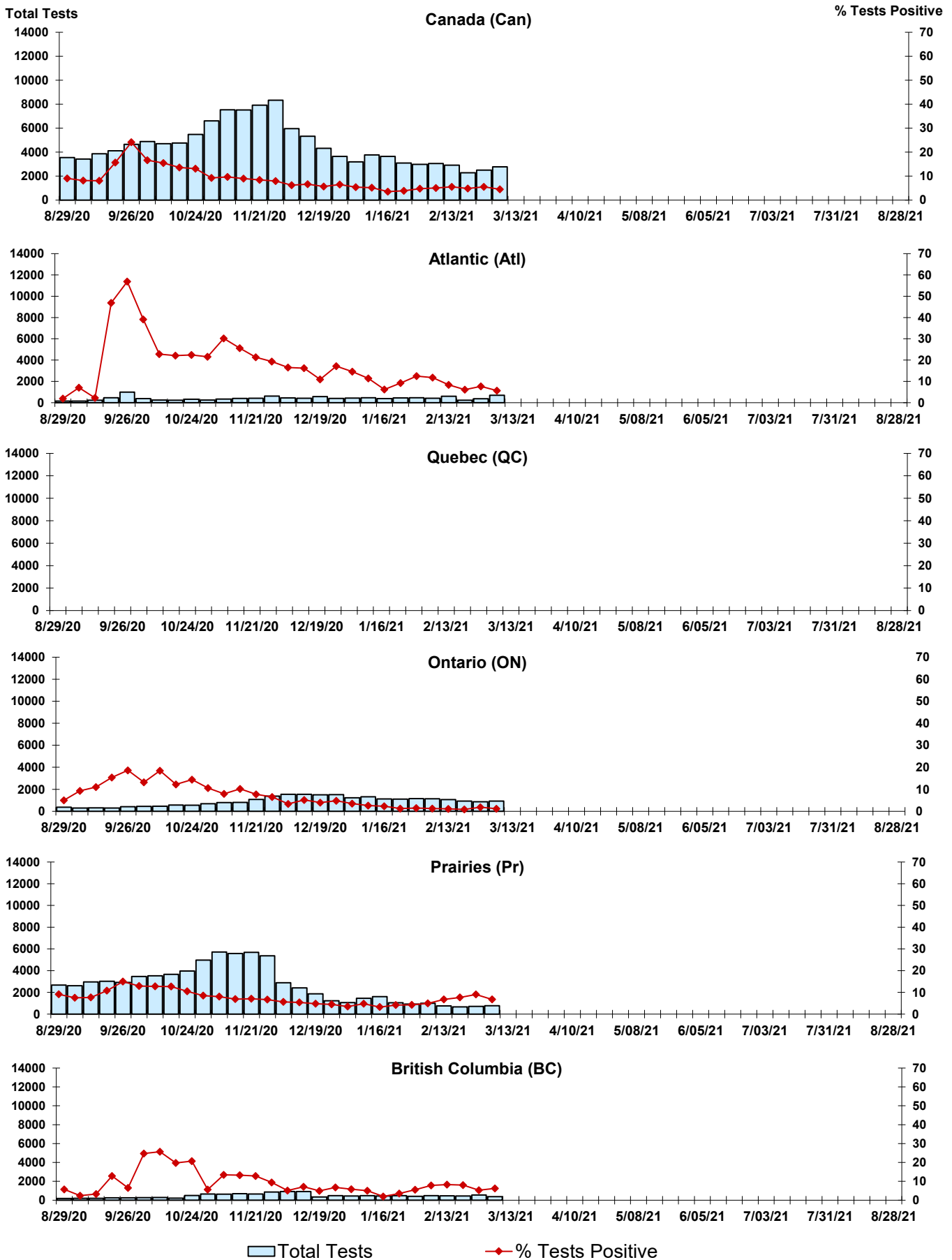
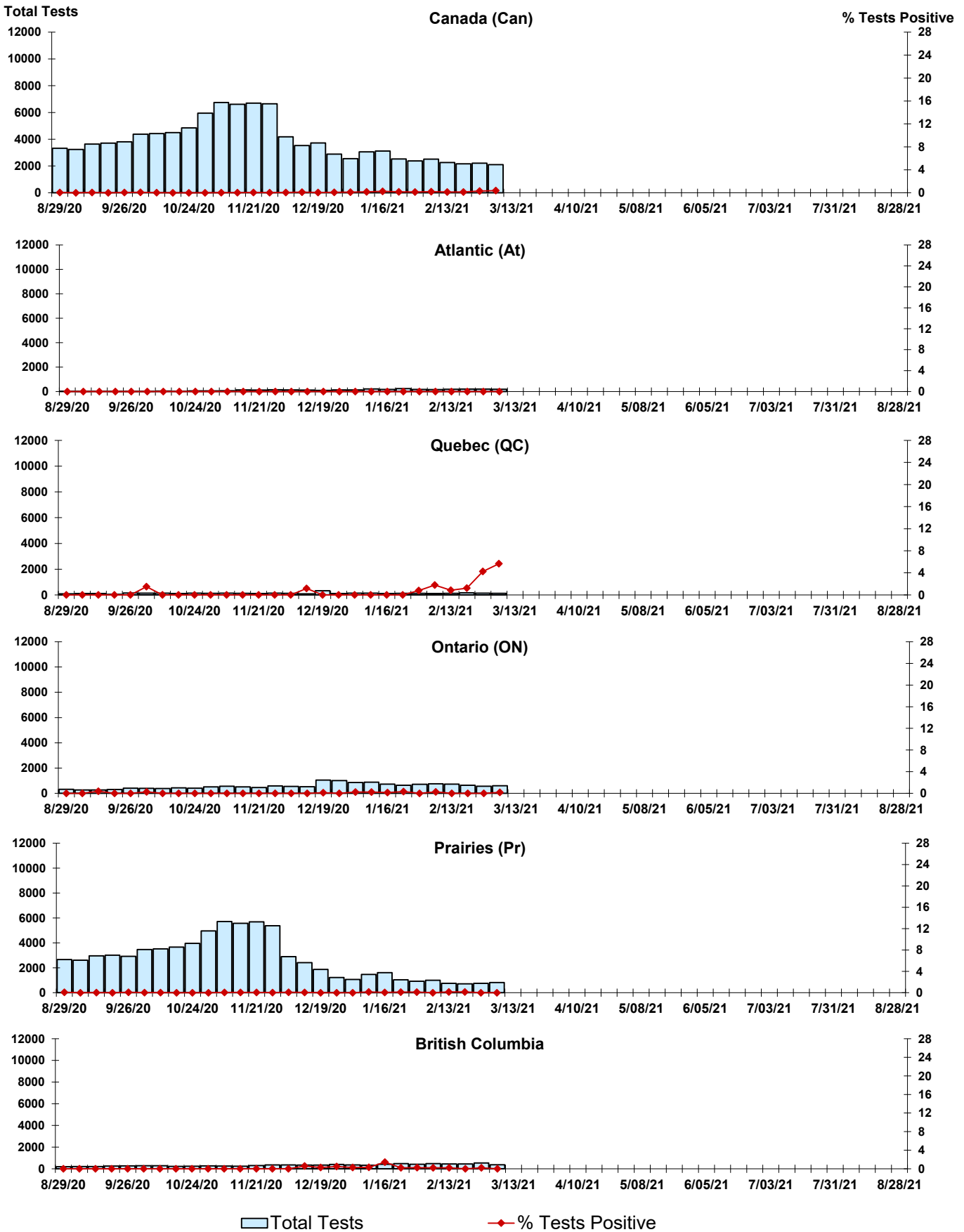


Figure 8: Positive Coronavirus (coron) Tests (%) in Canada by Region by Week of Report



Abbreviations:

A(H1N1)pdm09: Influenza A(H1N1)pdm09

A(H3): Influenza A(H3N2)

A (UnS): Influenza A (Unsubtyped)

Adeno: Adenovirus

CHEO: Children's Hospital of Eastern Ontario

Coron: Coronavirus

Enterovirus: Enterovirus

hMPV: human metapneumovirus

HSC: Health Sciences Centre

N.A.: Not Applicable

P.H.L.: Public Health Laboratory

P.H.O.L.: Public Health Ontario Laboratory

PIV: Parainfluenza

Rhino: Rhinovirus

RSV: Respiratory syncytial virus

UHN: University Health Network

Notes:

The data in the RVDSS report represent surveillance data available at the time of writing. Missing data are denoted by N.A.

Specimens from Yukon (YT), Northwest Territories (NT) and Nunavut (NU) are sent to reference laboratories in other provinces. Results reported for the Territories reflect the number of specimens that are identified as originating from YT, NT or NU.

Delays in the reporting of data may cause data to change retrospectively.

Due to reporting delays, the sum of weekly report totals do not add up to cumulative totals.