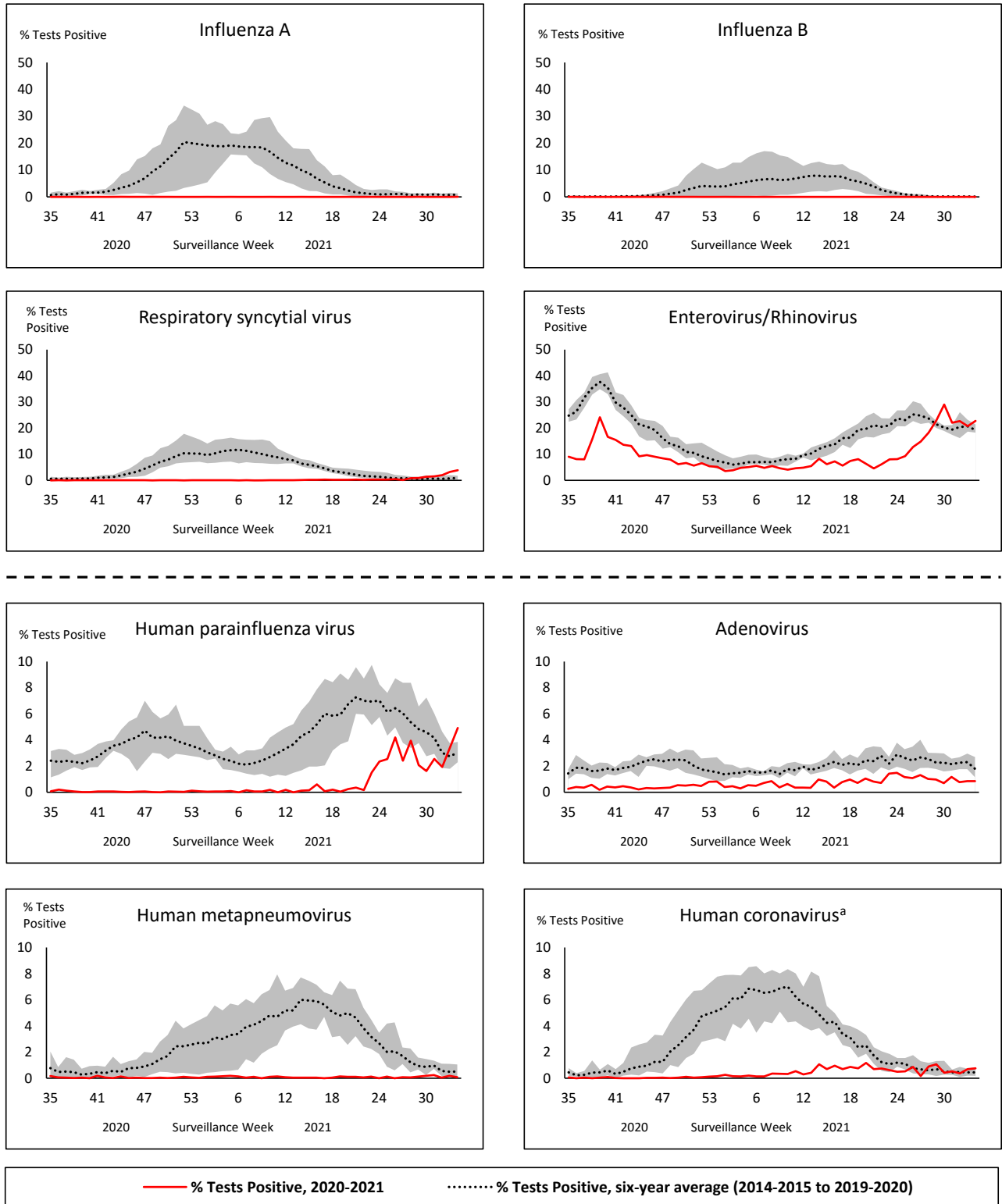


Respiratory Virus Report, Week 34 - ending August 28, 2021

The Respiratory Virus Detection Surveillance System collects data from select laboratories across Canada on the number of tests performed and the number of tests positive for influenza and other respiratory viruses. Data are reported on a weekly basis year-round to the Centre for Immunization and Respiratory Infectious Diseases (CIRID), Public Health Agency of Canada. These data are also summarized in the weekly FluWatch report.

In this Respiratory Virus Report, the number of detections of coronavirus reflects only seasonal human coronaviruses, not the novel pandemic coronavirus (SARS-CoV-2) that causes COVID-19. For information on COVID-19, see the [Coronavirus disease \(COVID-19\): Outbreak update](#).

Figure 1: Positive respiratory virus tests (%) reported by participating laboratories in Canada by surveillance week compared to average and range from 2014-2015 to 2019-2020 season



Shaded area represents the maximum and minimum % of respiratory virus tests positive reported by week from seasons 2014-2015 to 2019-2020

Note: Data from week 11 of the 2019-2020 season onwards is excluded from the historical comparison due to the COVID-19 pandemic

Note: % Tests Positive scale changes across the dashed line

^a Human coronavirus excludes human coronaviruses SARS-CoV, MERS-CoV and SARS-CoV-2; Includes seasonal human coronaviruses HCoV-229E, HCoV-OC43, HCoV-NL63, HCoV-HKU1.

Table 1: Respiratory virus detections for the week ending August 28, 2021 (surveillance week 2021-34)

Reporting Laboratory	Flu Tested	A(H1)pdm09 Positive	A(H3) Positive	A(UnS) Positive	Total Flu A Positive	Total Flu B Positive	RSV Tested	RSV Positive	HPIV Tested	HPIV 1 Positive	HPIV 2 Positive	HPIV 3 Positive	HPIV 4 Positive	Other HPIV Positive	ADV Tested	ADV Positive	HMPV Tested	HMPV Positive	EV/RV Tested	EV/RV Positive	HCoV Tested	HCoV Positive
Newfoundland	552	0	0	0	0	0	552	2	552	0	0	0	0	4	552	1	552	0	162	19	N.C.	N.C.
Prince Edward Island	45	0	0	0	0	0	45	0	45	0	0	2	0	0	45	1	45	0	45	18	45	0
Nova Scotia	46	0	0	0	0	0	46	0	42	0	0	2	0	0	42	1	42	0	42	2	42	0
New Brunswick	118	0	0	0	0	0	113	0	95	0	0	0	0	0	95	0	95	0	95	2	95	0
Atlantic	761	0	0	0	0	0	756	2	734	0	0	4	0	4	734	3	734	0	344	41	182	0
Région Nord-Est	464	0	0	0	0	0	40	4	0	0	0	0	0	0	0	0	0	0	N.C.	N.C.	0	0
Québec-Chaudière-Appalaches	35	0	0	0	0	0	44	4	35	0	0	1	0	0	35	1	35	0	N.C.	N.C.	35	0
Centre-du-Québec	3	0	0	0	0	0	4	1	5	0	0	0	0	0	5	1	5	0	N.C.	N.C.	5	0
Montréal-Laval	539	0	0	2	2	0	539	170	132	0	0	5	0	0	132	4	132	2	N.C.	N.C.	132	1
Ouest du Québec	22	0	0	0	0	0	22	1	0	0	0	0	0	0	0	0	0	0	N.C.	N.C.	0	0
Montérégie	23	0	0	0	0	0	23	9	0	0	0	0	0	0	0	0	0	0	N.C.	N.C.	0	0
Province of Québec	1086	0	0	2	2	0	672	189	172	0	0	6	0	0	172	6	172	2	N.C.	N.C.	172	1
P.H.O.L. - Ottawa	280	0	0	0	0	0	280	14	280	0	0	0	0	74	280	8	280	0	280	117	280	10
CHEO - Ottawa	57	0	0	0	0	0	57	0	22	0	0	0	0	0	22	0	22	0	22	4	22	1
P.H.O.L. - Kingston	32	0	0	0	0	0	32	0	32	0	0	0	0	6	32	1	32	0	32	11	32	0
UHN / Mount Sinai Hospital	352	0	0	0	0	0	352	0	10	0	0	0	0	0	10	0	10	0	10	0	10	0
P.H.O.L. - Toronto	164	0	1	0	1	0	163	0	163	0	0	0	0	5	163	2	163	0	163	44	163	0
Sick Kids Hospital - Toronto	N.R.	N.R.	N.R.	N.R.	N.R.	N.R.	N.R.	N.R.	N.R.	N.R.	N.R.	N.R.	N.R.	N.R.	N.R.	N.R.	N.R.	N.R.	N.R.	N.R.	N.R.	N.R.
Sunnybrook & Women's College HSC	N.R.	N.R.	N.R.	N.R.	N.R.	N.R.	N.R.	N.R.	N.R.	N.R.	N.R.	N.R.	N.R.	N.R.	N.R.	N.R.	N.R.	N.R.	N.R.	N.R.	N.R.	N.R.
P.H.O.L. - Sault Ste. Marie	6	0	0	0	0	0	6	0	6	0	0	0	0	0	6	0	6	0	6	1	6	0
P.H.O.L. - Timmins	2	0	0	0	0	0	2	0	2	0	0	0	0	0	2	0	2	0	2	0	2	0
St. Joseph's - London	N.R.	N.R.	N.R.	N.R.	N.R.	N.R.	N.R.	N.R.	N.R.	N.R.	N.R.	N.R.	N.R.	N.R.	N.R.	N.R.	N.R.	N.R.	N.R.	N.R.	N.R.	N.R.
P.H.O.L. - London	46	0	0	0	0	0	46	0	46	0	0	0	0	0	46	0	46	0	46	4	46	0
P.H.O.L. - Orillia	6	0	0	0	0	0	6	0	6	0	0	0	0	1	6	0	6	0	6	5	6	0
P.H.O.L. - Thunder Bay	7	0	0	0	0	0	7	0	7	0	0	0	0	0	7	0	7	0	7	6	7	0
P.H.O.L. - Sudbury	7	0	0	0	0	0	7	1	7	0	0	0	0	0	7	0	7	0	7	0	7	0
P.H.O.L. - Hamilton	15	0	0	0	0	0	15	0	15	0	0	0	0	2	15	0	15	0	15	3	15	0
P.H.O.L. - Peterborough	13	0	0	0	0	0	13	0	13	0	0	0	0	0	13	0	13	0	13	2	13	0
St. Joseph's - Hamilton	211	0	0	0	0	0	211	0	211	0	0	14	0	0	211	0	211	0	211	37	0	0
Province of Ontario	1198	0	1	0	1	0	1197	15	820	0	0	14	0	88	820	11	820	0	820	234	609	11
Province of Manitoba	1169	0	0	0	0	0	1169	0	24	0	0	0	0	0	24	0	76	0	24	10	76	0
Province of Saskatchewan	132	0	0	0	0	0	132	0	54	0	0	0	0	0	54	0	54	0	54	12	54	0
Province of Alberta	1339	0	0	0	0	0	489	0	489	0	0	9	0	0	489	1	489	0	489	96	489	2
Prairies	2640	0	0	0	0	0	1790	0	567	0	0	9	0	0	567	1	619	0	567	118	619	2
British Columbia	806	0	0	0	0	0	803	3	280	0	0	2	0	0	280	1	280	0	271	60	270	0
Yukon	175	0	0	0	0	0	175	0	N.C.	N.C.	N.C.	N.C.	N.C.	N.C.	N.C.	N.C.	N.C.	N.C.	N.C.	N.C.	N.C.	N.C.
Northwest Territories	4	0	0	0	0	0	4	0	4	0	0	0	0	0	4	0	4	0	4	0	4	0
Nunavut	7	0	0	0	0	0	6	0	6	0	0	0	0	0	6	0	6	0	6	4	1	0
Territories	186	0	0	0	0	0	185	0	10	0	0	0	0	0	10	0	10	0	10	4	5	0
CANADA	6677	0	1	2	3	0	5403	209	2583	0	0	35	0	92	2583	22	2635	2	2012	457	1857	14

The data in the RVDSS report represent surveillance data available at the time of writing. Data missing from the current week are denoted by N.R. Data not collected by reporting lab denoted by N.C.

Specimens from Yukon (YT), Northwest Territories (NT) and Nunavut (NU) are sent to reference laboratories in other provinces and reported results reflect specimens identified as originating from YT, NT or NU.

Results from British Columbia comprise of specimens from the following sites: BC Children's and Women's Hospital, Children's and Women's Hospital Laboratory, Fraser Health Medical Microbiology Laboratory, Island Health, Providence Health Care, Powell River Hospital, St. Paul's Hospital, Vancouver General Hospital, Victoria General Hospital, BCCDC Public Health Laboratory, Interior Health Authority sites and Northern Health Authority sites.

Delays in the reporting of data may cause data to change retrospectively.

Influenza co-detections may cause the sum of A(H1)pdm09, A(H3), and A(UnS) positive results to exceed the sum of Total Flu A Positive results.

Table 2: Cumulative respiratory virus detections from August 23, 2020 to August 28, 2021 (surveillance week 2020-35 to 2021-34)

Reporting Laboratory	Flu Tested	A(H1)pdm09 Positive	A(H3) Positive	A(UnS) Positive	Total Flu A Positive	Total Flu B Positive	RSV Tested	RSV Positive	HPIV Tested	HPIV 1 Positive	HPIV 2 Positive	HPIV 3 Positive	HPIV 4 Positive	Other HPIV Positive	ADV Tested	ADV Positive	HMPV Tested	HMPV Positive	EV/RV Tested	EV/RV Positive	HCoV Tested	HCoV Positive
Newfoundland	15746	0	0	0	0	0	15745	18	15745	1	0	7	0	8	15633	58	15158	2	14298	2277	N.C.	N.C.
Prince Edward Island	4430	0	0	0	0	0	4430	5	4426	3	0	4	1	0	4426	48	4426	0	4425	575	4425	2
Nova Scotia	8901	0	0	0	0	0	8904	0	1681	0	10	4	1	0	1681	18	1681	1	1681	98	1709	0
New Brunswick	55264	0	0	0	0	1	21124	0	2099	0	0	2	0	0	2090	12	2090	0	2090	72	2045	3
Atlantic	84341	0	0	0	0	1	50203	23	23951	4	10	17	2	8	23830	136	23355	3	22494	3022	8179	5
Région Nord-Est	12353	0	0	0	0	0	1393	8	8	0	0	0	0	0	8	1	8	0	N.C.	N.C.	8	0
Québec-Chaudière-Appalaches	1088	0	0	1	1	0	1227	14	1056	0	0	62	1	0	1058	57	1053	0	N.C.	N.C.	1036	31
Centre-du-Québec	1017	0	0	0	0	0	1026	6	546	0	0	25	0	0	544	30	546	0	N.C.	N.C.	543	17
Montréal-Laval	14727	0	0	2	2	0	13765	780	5938	93	0	189	0	0	5992	221	5922	14	N.C.	N.C.	5922	152
Ouest du Québec	2715	0	0	0	0	0	2606	3	0	0	0	0	0	0	0	0	0	0	N.C.	N.C.	0	0
Montérégie	1316	0	0	0	0	0	1316	19	0	0	0	0	0	0	0	0	0	0	N.C.	N.C.	0	0
Province of Québec	33216	0	0	3	3	0	21333	830	7548	93	0	276	1	0	7602	309	7529	14	N.C.	N.C.	7509	200
P.H.O.L. - Ottawa	1047	0	0	0	0	0	1047	18	936	0	0	0	0	89	936	12	935	0	936	173	935	14
CHEO - Ottawa	5807	0	0	1	1	1	5404	7	1258	0	0	8	0	0	1133	18	1133	1	1133	136	1133	8
P.H.O.L. - Kingston	1035	0	0	1	1	0	1035	0	709	0	0	0	0	23	709	6	700	0	709	162	700	0
UHN / Mount Sinai Hospital	18673	2	0	2	4	1	18604	7	10827	3	2	5	8	0	9201	11	10787	10	10584	105	8623	7
P.H.O.L. - Toronto	7932	0	1	0	1	0	7928	3	6896	0	0	0	0	14	6898	27	6891	3	6896	366	6891	10
Sick Kids Hospital - Toronto	1380	0	0	0	0	0	0	0	1380	0	0	1	0	0	1380	21	1380	0	1380	134	1380	1
Sunnybrook & Women's College HSC	0	0	0	0	0	0	0	0	0	0	0	0	0	0	0	0	0	0	0	0	0	0
P.H.O.L. - Sault Ste. Marie	212	0	0	2	2	0	210	0	136	0	0	0	0	0	136	0	136	0	136	10	136	0
P.H.O.L. - Timmins	642	0	0	0	0	0	642	0	182	0	0	0	0	0	182	1	181	0	182	32	181	0
St. Joseph's - London	218	0	0	0	0	0	218	0	55	0	0	0	0	0	55	0	55	0	91	8	36	0
P.H.O.L. - London	2159	1	0	5	6	2	2149	0	1487	0	0	0	0	2	1487	2	1481	0	1487	140	1481	3
P.H.O.L. - Orillia	453	0	0	1	1	0	451	0	233	0	0	0	0	1	233	2	233	0	233	31	233	0
P.H.O.L. - Thunder Bay	447	0	0	0	0	0	447	0	427	0	0	0	0	0	428	3	427	0	427	153	427	0
P.H.O.L. - Sudbury	573	0	0	0	0	0	571	2	392	0	0	0	0	4	392	4	392	0	392	33	392	7
P.H.O.L. - Hamilton	1660	0	1	0	1	0	1604	1	1347	0	0	0	0	4	1347	4	1347	0	1347	128	1347	0
P.H.O.L. - Peterborough	625	0	0	1	1	0	579	1	466	0	0	0	0	0	466	0	465	0	466	32	465	0
St. Joseph's - Hamilton	11784	0	1	0	1	0	11784	4	11784	0	0	59	0	0	11784	24	11784	0	11784	683	0	0
Province of Ontario	54647	3	3	13	19	4	52673	43	38515	3	2	73	8	137	36767	135	38327	14	38183	2326	24360	50
Manitoba	72132	0	1	3	4	2	72122	70	3024	0	1	3	0	0	3024	22	4471	1	3024	214	4471	9
Province of Saskatchewan	172503	0	0	1	1	1	27636	4	2449	0	0	1	2	0	2449	18	2449	4	2449	296	2449	16
Province of Alberta	143056	0	0	1	1	0	83655	0	83655	4	20	34	12	0	83655	183	83655	11	83655	8241	83655	43
Prairies	387691	0	1	5	6	3	183413	74	89128	4	21	38	14	0	89128	223	90575	16	89128	8751	90575	68
British Columbia	95770	3	8	1	10	8	95266	11	22080	2	5	6	15	6	22626	145	22251	75	22013	1922	17845	29
Yukon	8266	0	0	8	8	7	8175	5	N.C.	N.C.	N.C.	N.C.	N.C.	N.C.	N.C.	N.C.	N.C.	N.C.	N.C.	N.C.	N.C.	N.C.
Northwest Territories	1253	0	0	0	0	0	1189	0	1189	0	0	0	1	0	1189	12	1189	1	1189	333	1189	1
Nunavut	1143	0	0	0	0	0	1116	0	1116	3	1	0	0	0	1116	26	1116	5	1116	290	198	0
Territories	10662	0	0	8	8	7	10480	5	2305	3	1	0	1	0	2305	38	2305	6	2305	623	1387	1
CANADA	666327	6	12	30	46	23	413368	986	183527	109	39	410	41	151	182258	986	184342	128	174123	16644	149855	353

The data in the RVDSS report represent surveillance data available at the time of writing. Data not collected by reporting lab denoted by N.C.

Specimens from Yukon (YT), Northwest Territories (NT) and Nunavut (NU) are sent to reference laboratories in other provinces and reported results reflect specimens identified as originating from YT, NT or NU.

Results from British Columbia comprise of specimens from the following sites: BC Children's and Women's Hospital, Children's and Women's Hospital Laboratory, Fraser Health Medical Microbiology Laboratory, Island Health, Providence Health Care, Powell River Hospital, St. Paul's Hospital, Vancouver General Hospital, Victoria General Hospital, BCCDC Public Health Laboratory, Interior Health Authority sites and Northern Health Authority sites.

Delays in the reporting of data may cause data to change retrospectively. Due to these delays, the sum of weekly report totals do not add up to cumulative totals.

Influenza co-detections may cause the sum of A(H1N1)pdm09, A(H3), and A(UnS) positive results to exceed the sum of Total Flu A Positive results.

Figure 2: Number of positive respiratory virus tests reported by participating laboratories in Canada by surveillance week

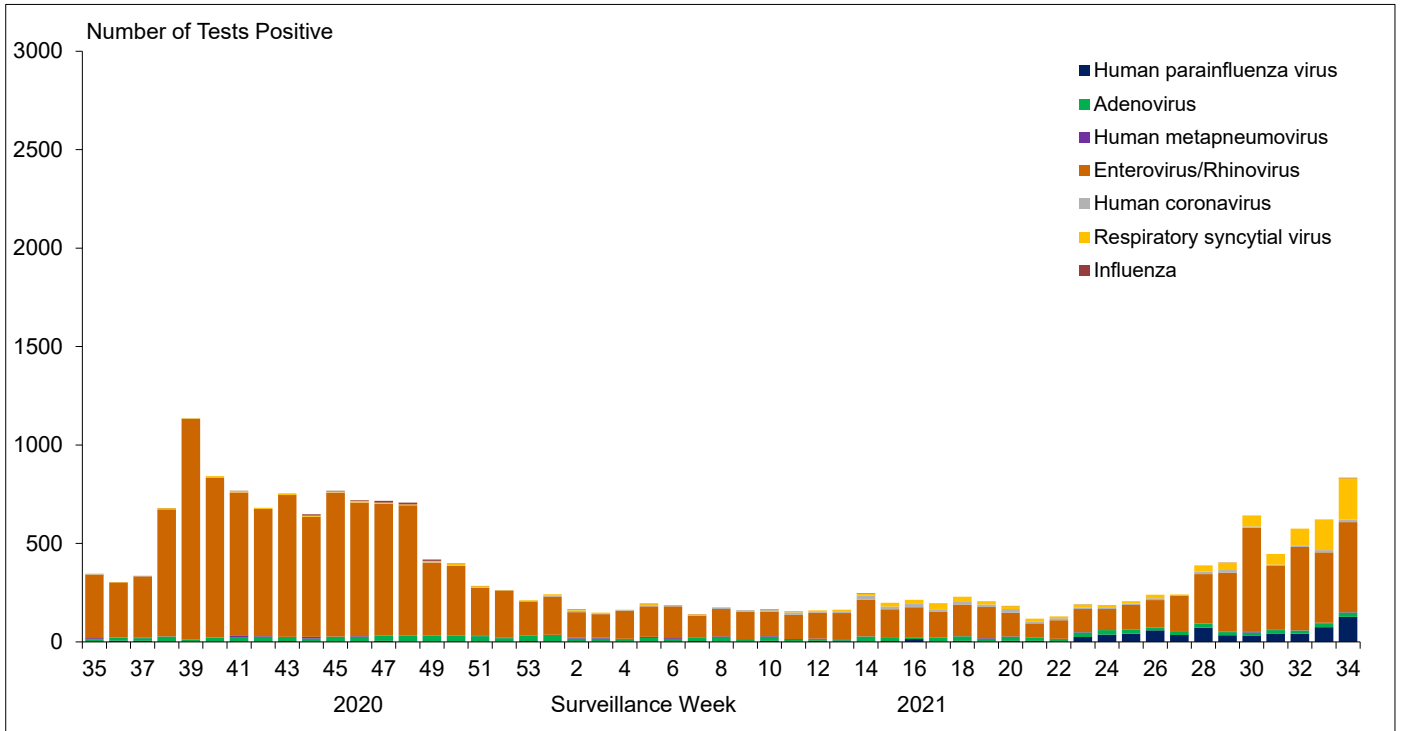


Figure 3: Positive Influenza (Flu) tests (%) in Canada by region by surveillance week

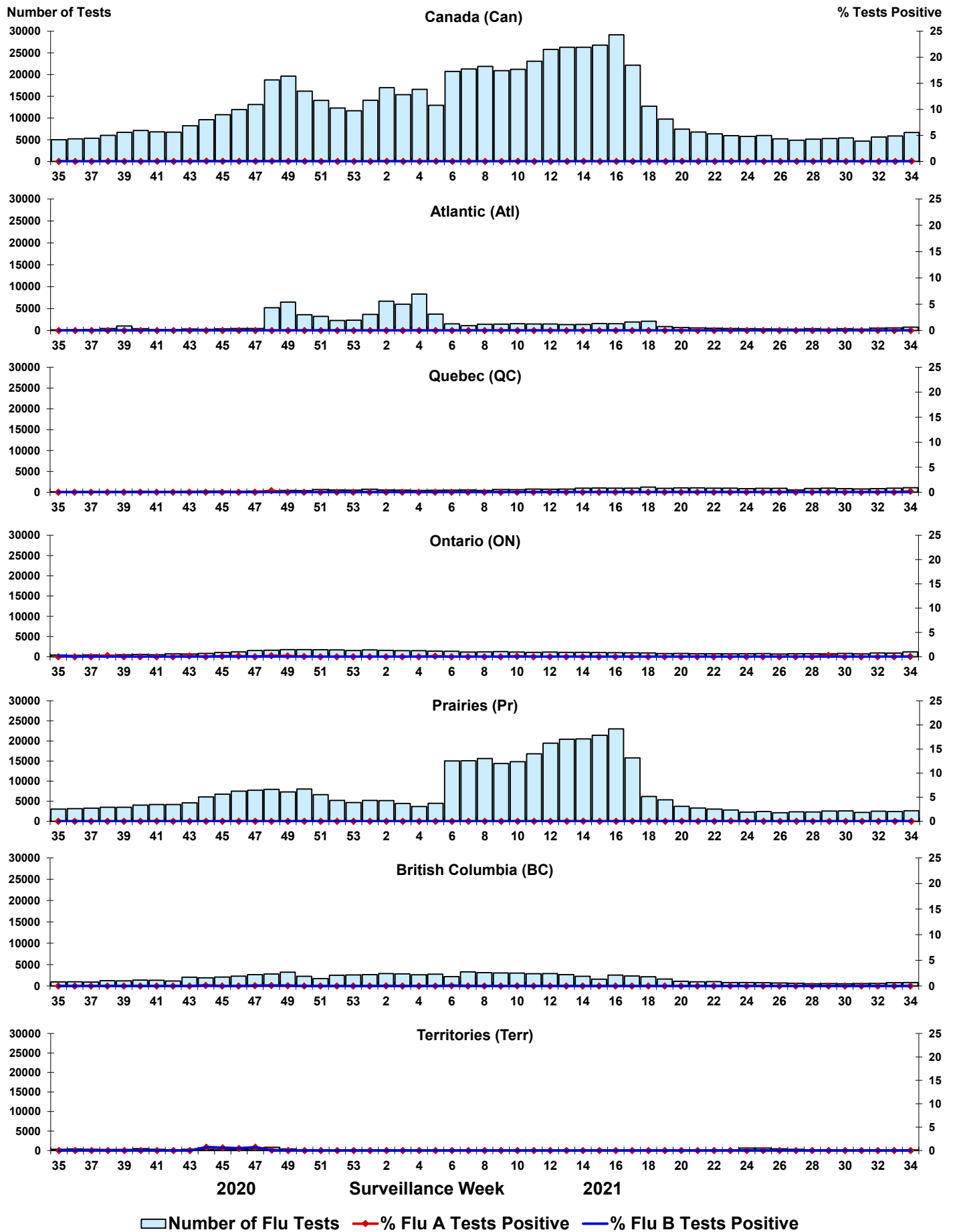


Figure 4: Positive Respiratory syncytial virus (RSV) tests (%) in Canada by region by surveillance week

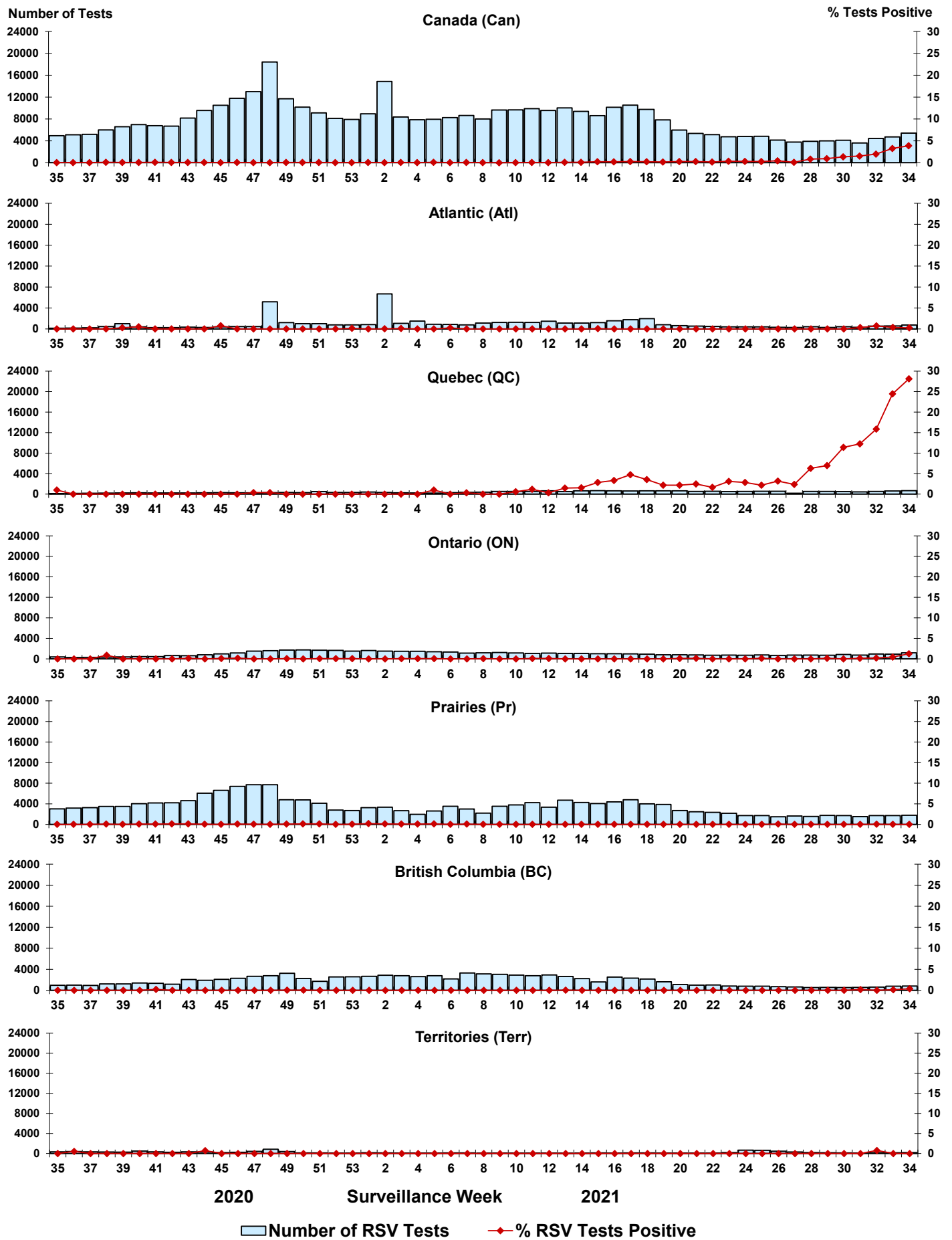


Figure 5: Positive Human parainfluenza virus (HPIV) tests (%) in Canada by region by surveillance week

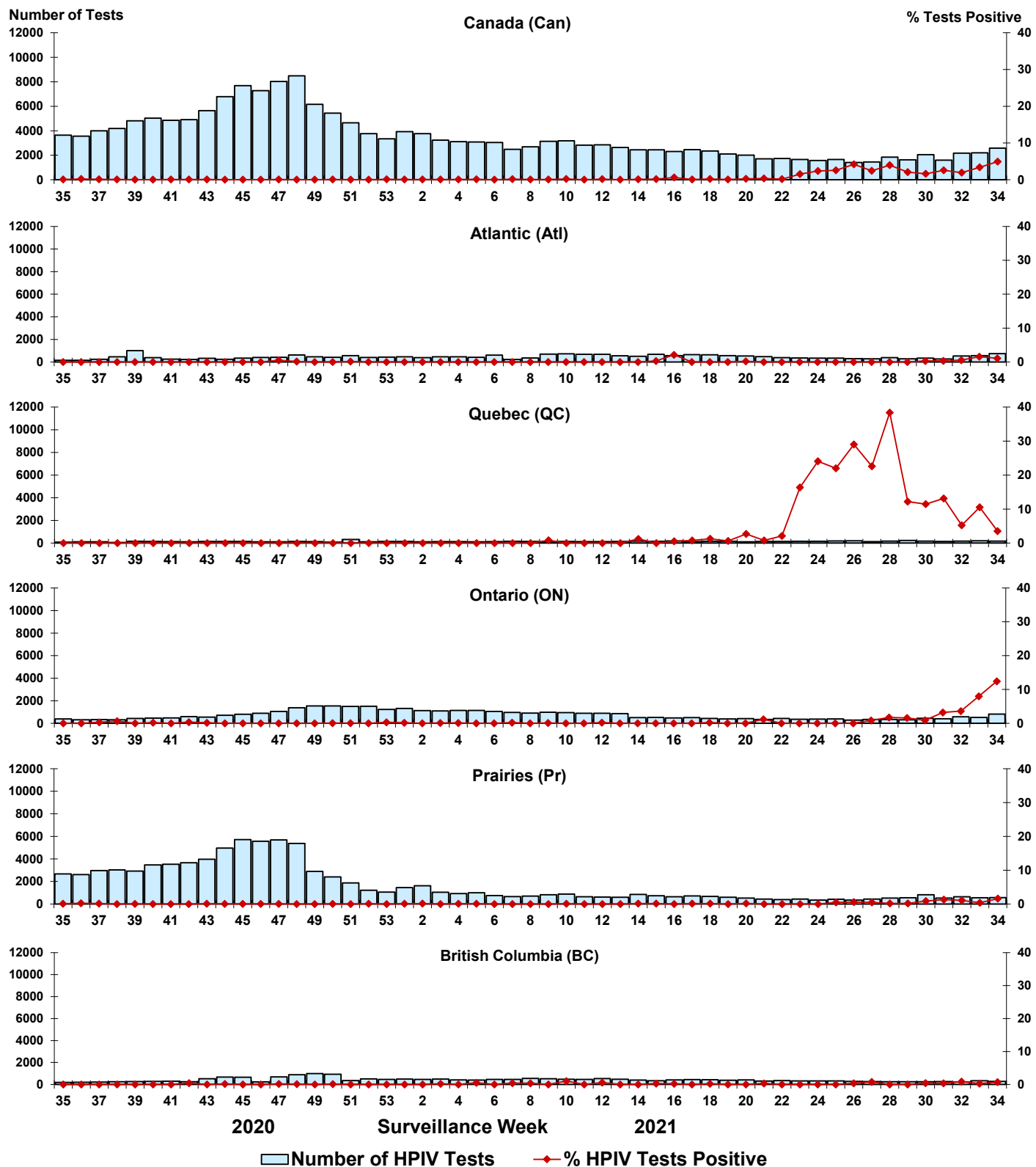


Figure 6: Positive Adenovirus (ADV) tests (%) in Canada by region by surveillance week

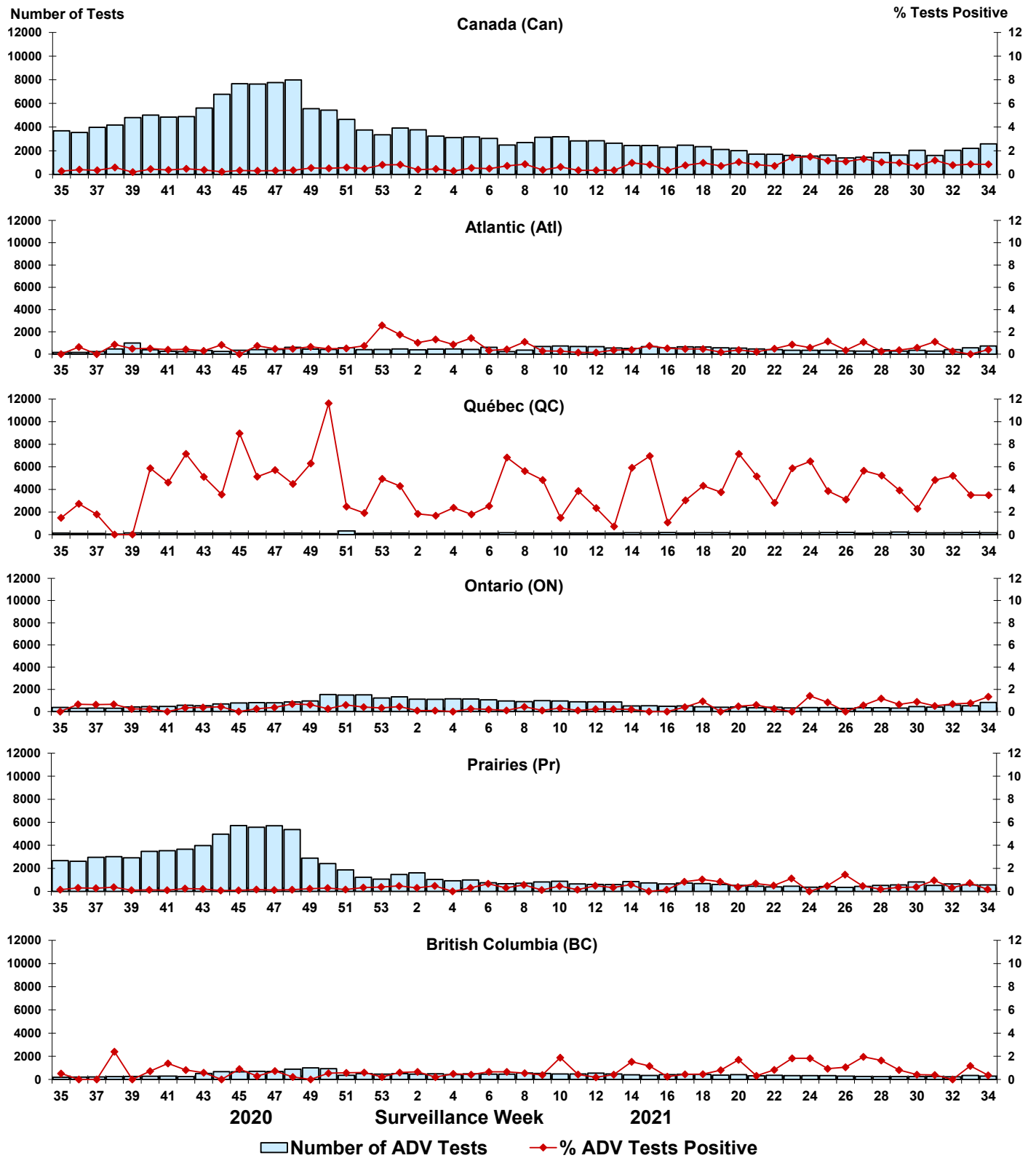


Figure 7: Positive Human metapneumovirus (HMPV) tests (%) in Canada by region by surveillance week

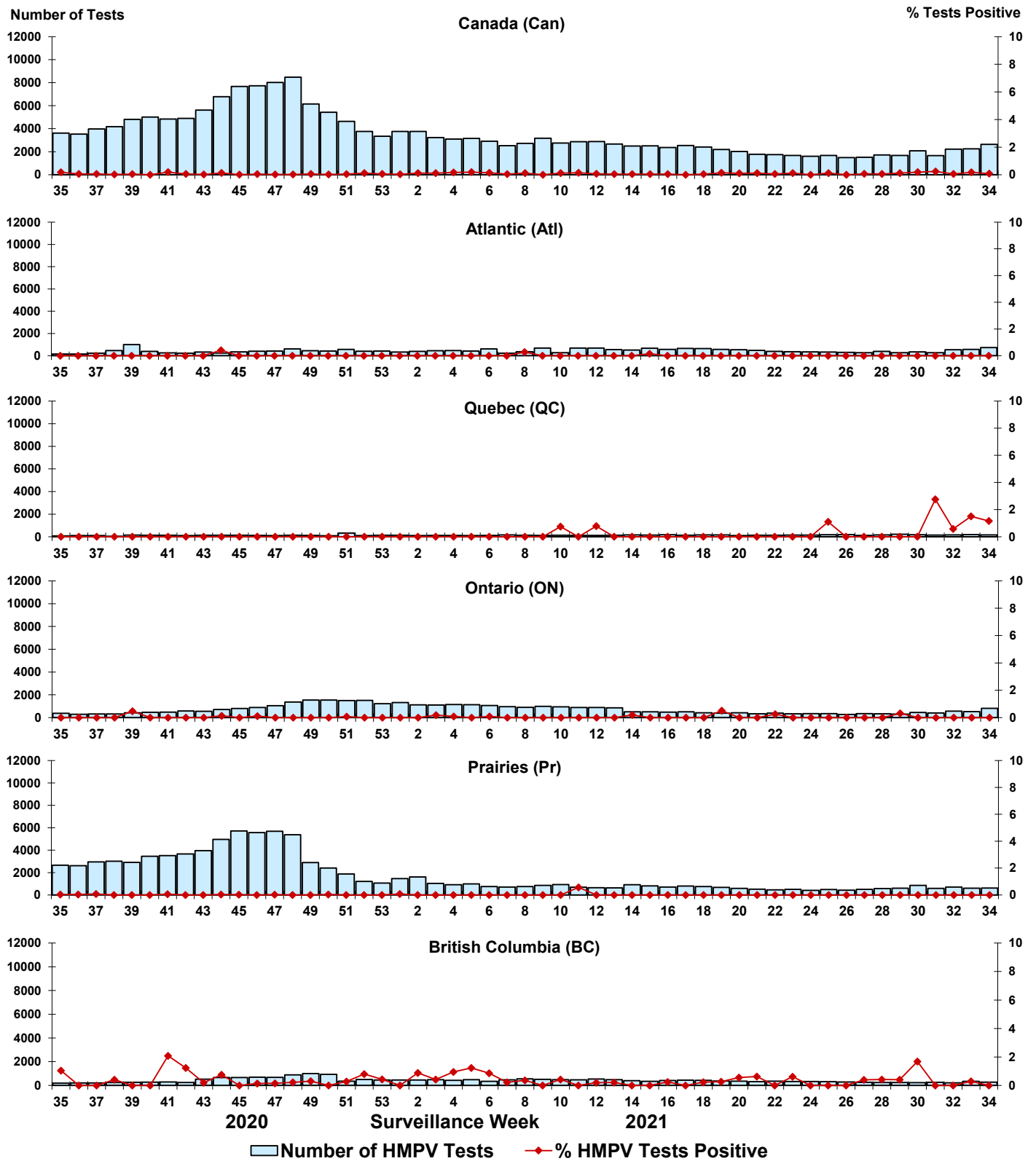


Figure 8: Positive Enterovirus/Rhinovirus (EV/RV) tests (%) in Canada by region by surveillance week

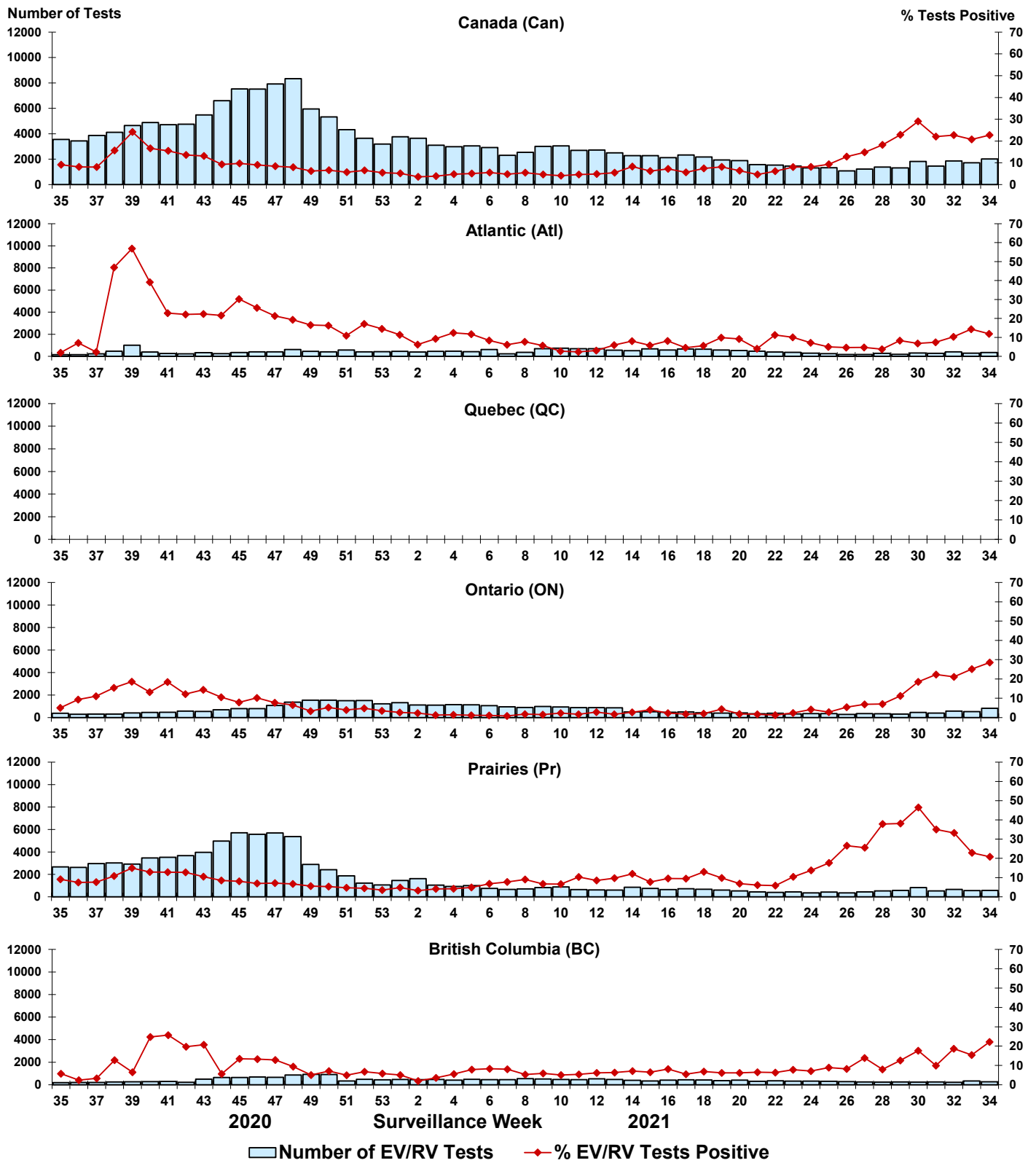
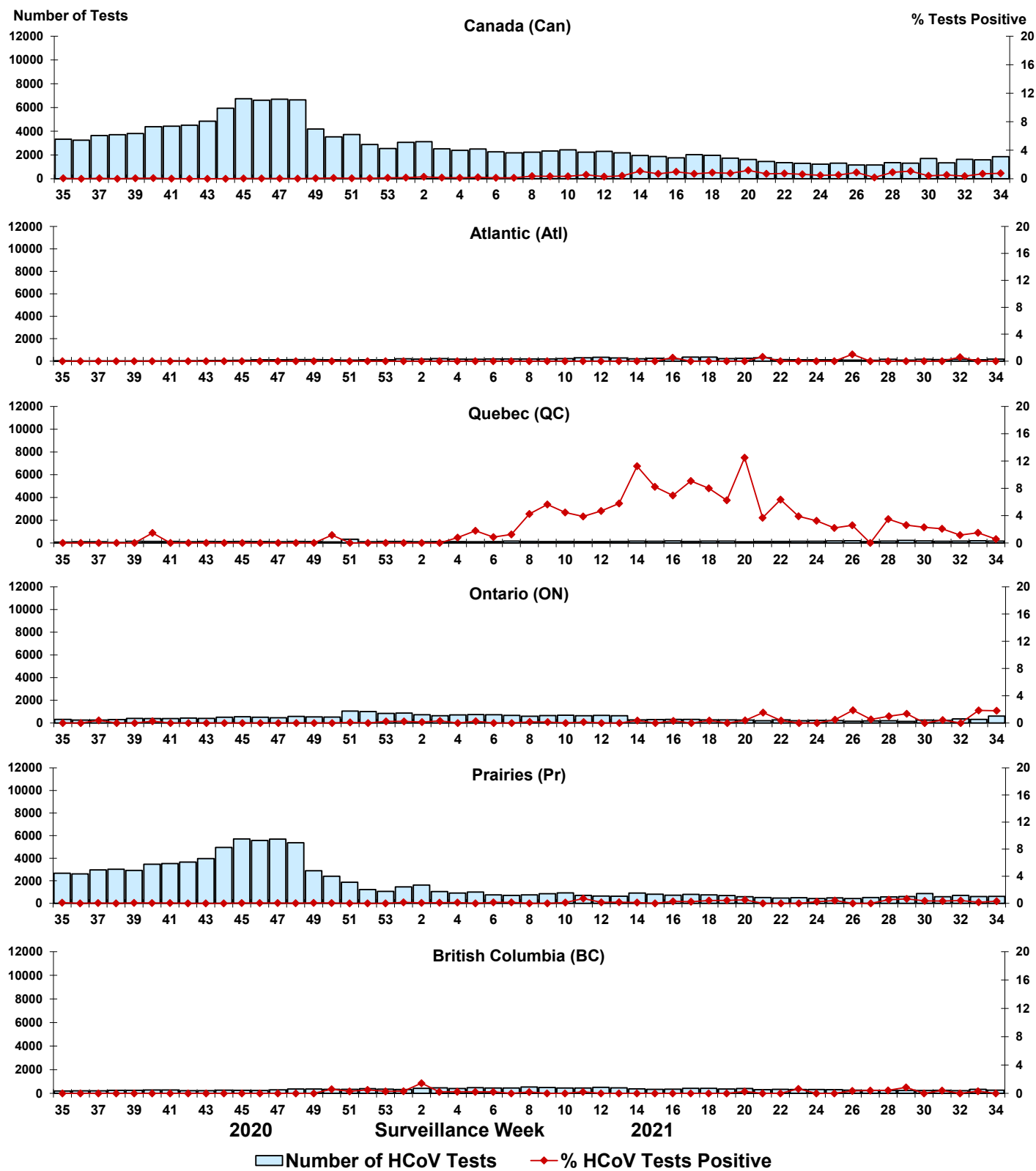


Figure 9: Positive Human coronavirus (HCoV) tests (%) in Canada by region by surveillance week



Abbreviations:

Flu: Influenza

A(H1)pdm09: Influenza A(H1N1)pdm09

A(H3): Influenza A(H3N2)

A(UnS): Influenza A(Unsubtyped)

RSV: Respiratory syncytial virus

HPIV: Human parainfluenza virus

HMPV: Human metapneumovirus

ADV: Adenovirus

EV/RV: Enterovirus/Rhinovirus

HCoV: Human coronavirus

Atl: Atlantic Canada

BC: British Columbia

Can: Canada

CHEO: Children's Hospital of Eastern Ontario

HSC: Health Sciences Centre

N.C.: Data not collected

N.R.: Data not reported for current week

ON: Ontario

PR: Prairies

P.H.O.L.: Public Health Ontario Laboratory

QC: Quebec

Terr: Territories of Canada

UHN: University Health Network