

Respiratory Virus Report, Week 15 - ending April 17, 2021

The Respiratory Virus Detection Surveillance System collects data from select laboratories across Canada on the number of tests performed and the number of tests positive for influenza and other respiratory viruses. Data are reported on a weekly basis year-round to the Centre for Immunization and Respiratory Infectious Diseases (CIRID), Public Health Agency of Canada. These data are also summarized in the weekly FluWatch report.

In this Respiratory Virus Report, the number of detections of coronavirus reflects only seasonal human coronaviruses, not the novel pandemic coronavirus (SARS-CoV2) that causes COVID-19. For information on COVID-19, see the [Coronavirus disease \(COVID-19\): Outbreak](#)

Table 1: Respiratory Virus Detections/Isolations for the week ending April 17, 2021 (Reporting Week 202115)

Reporting Laboratory	Flu Tested	A(H1N1)pdm09 Positive	A(H3) Positive	A(UnS) Positive	Total Flu A Positive	Total Flu B Positive	RSV Tested	RSV Positive	PIV Tested	PIV 1 Positive	PIV 2 Positive	PIV 3 Positive	PIV 4 Positive	Other PIV Positive	Adeno Tested	Adeno Positive	hMPV Tested	hMPV Positive	Entero/Rhino Tested	Entero/Rhino Positive	Coron Tested	Coron Positive
Newfoundland	421	0	0	0	0	0	421	0	421	0	0	0	0	0	421	1	421	0	421	7	N.A.	N.A.
Prince Edward Island	218	0	0	0	0	0	218	1	218	1	0	0	1	0	218	3	218	0	218	28	218	0
Nova Scotia	377	0	0	0	0	0	377	0	19	0	0	0	0	0	19	1	19	1	19	4	19	0
New Brunswick	582	0	0	0	0	0	187	0	19	0	0	0	0	0	19	0	19	0	19	0	19	0
Atlantic	1598	0	0	0	0	0	1203	1	677	1	0	0	1	0	677	5	677	1	677	39	256	0
Région Nord-Est	416	0	0	0	0	0	60	0	1	0	0	0	0	0	1	1	1	0	N.A.	N.A.	1	0
Québec-Chaudière-Appalaches	7	0	0	0	0	0	10	0	18	0	0	0	0	0	18	3	18	0	N.A.	N.A.	18	6
Centre-du-Québec	17	0	0	0	0	0	17	0	21	0	0	0	0	0	21	0	21	0	N.A.	N.A.	21	1
Montréal-Laval	362	0	0	0	0	0	361	18	118	0	0	0	0	0	118	7	118	0	N.A.	N.A.	118	6
Ouest du Québec	134	0	0	0	0	0	132	0	0	0	0	0	0	0	0	0	0	0	N.A.	N.A.	0	0
Montérégie	91	0	0	0	0	0	91	1	0	0	0	0	0	0	0	0	0	0	N.A.	N.A.	0	0
Province of Québec	1027	0	0	0	0	0	671	19	158	0	0	0	0	0	158	11	158	0	N.A.	N.A.	158	13
P.H.O.L. - Ottawa	16	0	0	0	0	0	16	0	14	0	0	0	0	0	14	0	14	0	14	0	14	0
CHEO - Ottawa	87	0	0	0	0	0	87	0	28	0	0	0	0	0	28	0	28	0	28	2	28	0
P.H.O.L. - Kingston	14	0	0	0	0	0	14	0	9	0	0	0	0	0	9	0	9	0	9	0	9	0
UHN / Mount Sinai Hospital	N.A.	N.A.	N.A.	N.A.	N.A.	N.A.	N.A.	N.A.	N.A.	N.A.	N.A.	N.A.	N.A.	N.A.	N.A.	N.A.	N.A.	N.A.	N.A.	N.A.	N.A.	N.A.
P.H.O.L. - Toronto	173	0	0	0	0	0	173	0	139	0	0	0	0	0	139	0	139	0	139	3	139	0
Sick Kids Hospital - Toronto	N.A.	N.A.	N.A.	N.A.	N.A.	N.A.	N.A.	N.A.	N.A.	N.A.	N.A.	N.A.	N.A.	N.A.	N.A.	N.A.	N.A.	N.A.	N.A.	N.A.	N.A.	N.A.
Sunnybrook & Women's College HSC	N.A.	N.A.	N.A.	N.A.	N.A.	N.A.	N.A.	N.A.	N.A.	N.A.	N.A.	N.A.	N.A.	N.A.	N.A.	N.A.	N.A.	N.A.	N.A.	N.A.	N.A.	N.A.
P.H.O.L. - Sault Ste. Marie	3	0	0	0	0	0	3	0	0	0	0	0	0	0	0	0	0	0	0	0	0	0
P.H.O.L. - Timmins	2	0	0	0	0	0	2	0	1	0	0	0	0	0	1	0	1	0	1	0	1	0
St. Joseph's - London	N.A.	N.A.	N.A.	N.A.	N.A.	N.A.	N.A.	N.A.	N.A.	N.A.	N.A.	N.A.	N.A.	N.A.	N.A.	N.A.	N.A.	N.A.	N.A.	N.A.	N.A.	N.A.
P.H.O.L. - London	31	0	0	0	0	0	31	0	11	0	0	0	0	0	11	0	11	0	11	0	11	0
P.H.O.L. - Orillia	6	0	0	0	0	0	6	0	1	0	0	0	0	0	1	0	1	0	1	0	1	0
P.H.O.L. - Thunder Bay	2	0	0	0	0	0	2	0	2	0	0	0	0	0	2	0	2	0	2	0	2	0
P.H.O.L. - Sudbury	9	0	0	0	0	0	9	0	0	0	0	0	0	0	0	0	0	0	0	0	0	0
P.H.O.L. - Hamilton	21	0	0	0	0	0	17	0	15	0	0	0	0	0	15	0	15	0	15	0	15	0
P.H.O.L. - Peterborough	6	0	0	0	0	0	6	0	5	0	0	0	0	0	5	0	5	0	5	0	5	0
St. Joseph's - Hamilton	214	0	0	0	0	0	214	0	214	0	0	0	0	0	214	0	214	0	214	9	0	0
Province of Ontario	584	0	0	0	0	0	580	0	439	0	0	0	0	0	439	0	439	0	439	14	225	0
Province of Manitoba	1375	0	0	0	0	0	1375	0	9	0	0	0	0	0	9	0	76	0	9	3	76	0
Province of Saskatchewan	15671	0	0	0	0	0	1875	0	27	0	0	0	0	0	27	0	27	0	27	2	27	0
Province of Alberta	2683	0	0	0	0	0	632	0	632	0	0	0	1	0	632	0	632	0	632	46	632	0
Prairies	19729	0	0	0	0	0	3882	0	668	0	0	0	1	0	668	0	735	0	668	51	735	0
British Columbia	1597	0	0	0	0	0	1583	0	336	0	0	1	0	0	336	4	336	0	330	21	330	0
Yukon	89	0	0	0	0	0	89	0	N.A.	N.A.	N.A.	N.A.	N.A.	N.A.	N.A.	N.A.	N.A.	N.A.	N.A.	N.A.	N.A.	N.A.
Northwest Territories	6	0	0	0	0	0	3	0	3	0	0	0	0	0	3	0	3	0	3	1	3	0
Nunavut	2	0	0	0	0	0	2	0	2	0	0	0	0	0	2	0	2	0	2	0	2	0
Territories	97	0	0	0	0	0	94	0	5	0	0	0	0	0	5	0	5	0	5	1	5	0
CANADA	24632	0	0	0	0	0	8013	20	2283	1	0	1	2	0	2283	20	2350	1	2119	126	1709	13

The data in the RVDSS report represent surveillance data available at the time of writing. Missing data are denoted by N.A.

Specimens from Yukon (YT), Northwest Territories (NT) and Nunavut (NU) are sent to reference laboratories in other provinces and reported results reflect specimens identified as originating from YT, NT or NU.

Results from British Columbia comprise of specimens from the following sites: BC Children's and Women's Hospital, Fraser Health Medical Microbiology Laboratory, Island Health, Providence Health Care, Powell River Hospital, St. Paul's Hospital, Vancouver General Hospital, Victoria General Hospital, BCCDC Public Health Laboratory, Interior Health Authority sites and Northern Health Authority sites.

Delays in the reporting of data may cause data to change retrospectively.

Influenza co-detections may cause the sum of A(H1N1)pdm09, A(H3), and A(UnS) positive results to exceed the sum of Total Flu A Positive results.

Table 2: Respiratory Virus Detections/Isolations for the period August 23, 2020 - April 17, 2021 (Reporting Weeks 202035-202115)

Reporting Laboratory	Flu Tested	A(H1N1)pdm09 Positive	A(H3) Positive	A(UnS) Positive	Total Flu A Positive	Total Flu B Positive	RSV Tested	RSV Positive	PIV Tested	PIV 1 Positive	PIV 2 Positive	PIV 3 Positive	PIV 4 Positive	Other PIV Positive	Adeno Tested	Adeno Positive	hMPV Tested	hMPV Positive	Entero/Rhino Tested	Entero/Rhino Positive	Coron Tested	Coron Positive
Newfoundland	10590	0	0	0	0	0	10590	10	10590	1	0	1	0	0	10602	47	10003	2	10590	1980	N.A.	N.A.
Prince Edward Island	3297	0	0	0	0	0	3297	4	3293	3	0	0	1	0	3293	33	3293	0	3293	369	3293	0
Nova Scotia	4894	0	0	0	0	0	4897	0	551	0	0	0	0	0	551	8	551	1	551	68	578	0
New Brunswick	51997	0	0	0	0	1	18522	0	959	0	0	0	0	0	950	9	950	0	950	50	905	0
Atlantic	70778	0	0	0	0	1	37306	14	15393	4	0	1	1	0	15396	97	14797	3	15384	2467	4776	0
Région Nord-Est	4249	0	0	0	0	0	973	1	1	0	0	0	0	0	1	1	1	0	N.A.	N.A.	1	0
Québec-Chaudière-Appalaches	696	0	0	1	1	0	779	0	506	0	0	0	0	0	508	32	503	0	N.A.	N.A.	486	20
Centre-du-Québec	822	0	0	0	0	0	831	1	293	0	0	1	0	0	291	17	293	0	N.A.	N.A.	290	2
Montréal-Laval	7144	0	0	0	0	0	6186	50	3644	0	0	2	0	0	3698	131	3628	2	N.A.	N.A.	3628	57
Ouest du Québec	1699	0	0	0	0	0	1641	0	0	0	0	0	0	0	0	0	0	0	N.A.	N.A.	0	0
Montérégie	688	0	0	0	0	0	688	1	0	0	0	0	0	0	0	0	0	0	N.A.	N.A.	0	0
Province of Québec	15298	0	0	1	1	0	11098	53	4444	0	0	3	0	0	4498	181	4425	2	N.A.	N.A.	4405	79
P.H.O.L. - Ottawa	493	0	0	0	0	0	493	1	418	0	0	0	0	0	418	0	417	0	418	22	417	1
CHEO - Ottawa	4564	0	0	1	1	1	4161	5	695	0	0	0	0	0	695	12	695	1	695	79	695	0
P.H.O.L. - Kingston	795	0	0	1	1	0	795	0	521	0	0	0	0	0	521	4	515	0	521	106	515	0
UHN / Mount Sinai Hospital	10575	2	0	2	4	1	10506	6	9974	3	2	3	8	0	8348	9	9934	8	9731	96	7770	6
P.H.O.L. - Toronto	5557	0	0	0	0	0	5554	2	4800	0	0	0	0	3	4801	12	4799	1	4800	148	4799	5
Sick Kids Hospital - Toronto	1083	0	0	0	0	0	0	0	1083	0	0	0	0	0	1083	17	1083	0	1083	104	1083	1
Sunnybrook & Women's College HSC	0	0	0	0	0	0	0	0	0	0	0	0	0	0	0	0	0	0	0	0	0	0
P.H.O.L. - Sault Ste. Marie	150	0	0	2	2	0	148	0	90	0	0	0	0	0	90	0	90	0	90	6	90	0
P.H.O.L. - Timmins	611	0	0	0	0	0	611	0	161	0	0	0	0	0	161	0	160	0	161	31	160	0
St. Joseph's - London	218	0	0	0	0	0	218	0	55	0	0	0	0	0	55	0	55	0	91	8	36	0
P.H.O.L. - London	1823	1	0	5	6	2	1813	0	1250	0	0	0	0	2	1250	2	1245	0	1250	126	1245	3
P.H.O.L. - Orillia	380	0	0	1	1	0	378	0	191	0	0	0	0	0	191	1	191	0	191	12	191	0
P.H.O.L. - Thunder Bay	398	0	0	0	0	0	398	0	384	0	0	0	0	0	385	3	384	0	384	137	384	0
P.H.O.L. - Sudbury	458	0	0	0	0	0	456	0	325	0	0	0	0	0	325	2	325	0	325	28	325	0
P.H.O.L. - Hamilton	1443	0	0	0	0	0	1388	1	1166	0	0	0	0	0	1166	2	1166	0	1166	98	1166	0
P.H.O.L. - Peterborough	465	0	0	1	1	0	419	0	321	0	0	0	0	0	321	0	320	0	321	24	320	0
St. Joseph's - Hamilton	8756	0	0	0	0	0	8756	2	8756	0	0	1	0	0	8756	19	8756	0	8756	436	0	0
Province of Ontario	37769	3	0	13	16	4	36094	17	30190	3	2	4	8	5	28566	83	30135	10	29983	1461	19196	16
Manitoba	44049	0	0	2	2	1	44039	68	2696	0	1	1	0	0	2696	18	2991	1	2696	146	2991	3
Province of Saskatchewan	137372	0	0	0	0	0	19797	4	1660	0	0	1	1	0	1660	10	1660	4	1660	167	1660	8
Province of Alberta	114749	4	0	6	10	0	74469	0	74469	2	18	3	7	0	74469	137	74469	11	74469	6255	74469	23
Prairies	296170	4	0	8	12	1	138305	72	78825	2	19	5	8	0	78825	165	79120	16	78825	6568	79120	34
British Columbia	75989	3	8	1	10	8	75565	6	15791	1	4	1	10	5	16331	90	16181	58	15990	1340	11970	19
Yukon	4656	0	0	8	8	7	4594	4	N.A.	N.A.	N.A.	N.A.	N.A.	N.A.	N.A.	N.A.	N.A.	N.A.	N.A.	N.A.	N.A.	N.A.
Northwest Territories	1129	0	0	0	0	0	1090	0	1090	0	0	0	1	0	1090	9	1090	1	1090	319	1090	1
Nunavut	1113	0	0	0	0	0	1096	0	1096	3	1	0	0	0	1096	25	1096	5	1096	281	186	0
Territories	6898	0	0	8	8	7	6780	4	2186	3	1	0	1	0	2186	34	2186	6	2186	600	1276	1
CANADA	502902	10	8	31	47	21	305148	166	146829	13	26	14	28	10	145802	650	146844	95	142368	12436	120743	149

The data in the RVDSS report represent surveillance data available at the time of writing. Missing data are denoted by N.A.

Specimens from YT, NT and NU are sent to reference laboratories in other provinces and reported results reflect specimens identified as originating from YT, NT or NU.

Results from British Columbia comprise of specimens from the following sites: BC Children's and Women's Hospital, Children's and Women's Hospital Laboratory, Fraser Health Medical Microbiology Laboratory, Island Health, Providence Health Care, Powell River Hospital, St. Paul's Hospital, Vancouver General Hospital, Victoria General Hospital, BCCDC Public Health Laboratory, Interior Health Authority sites and Northern Health Authority sites.

Delays in the reporting of data may cause data to change retrospectively.

Due to reporting delays, the sum of weekly report totals do not add up to cumulative totals.

Influenza co-detections may cause the sum of A(H1N1)pdm09, A(H3), and A(UnS) positive results to exceed the sum of Total Flu A Positive results.

Figure 1: Number positive laboratory tests for other respiratory viruses by report week, Canada, 2020-21

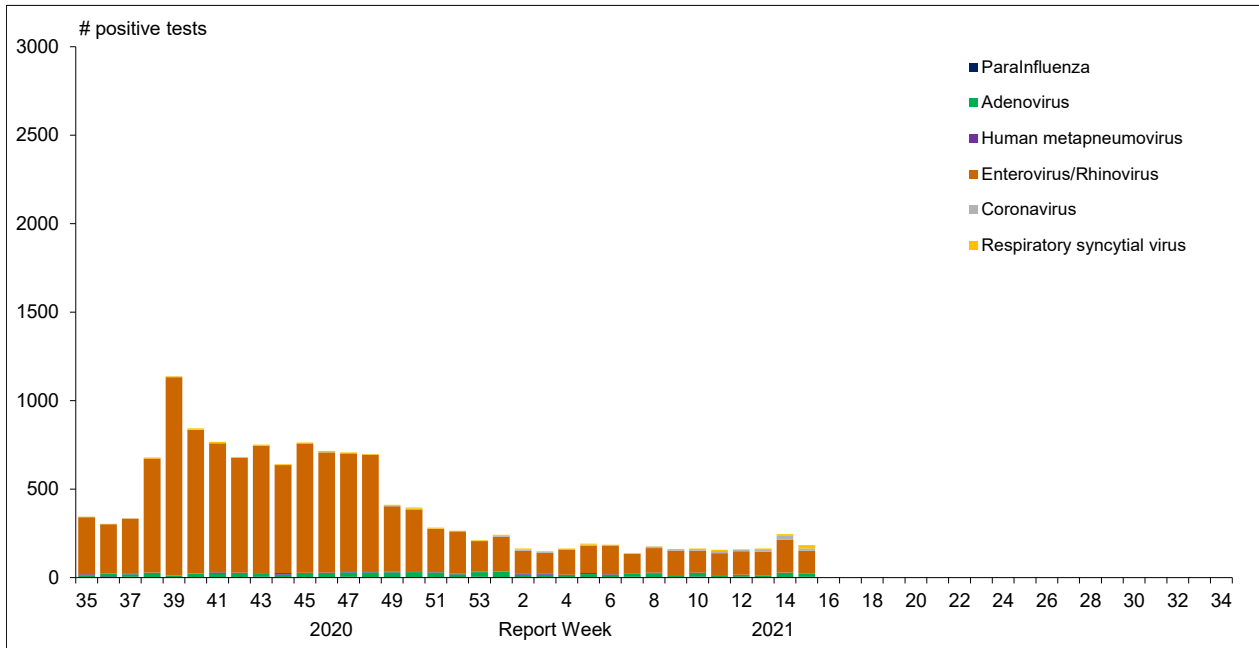


Figure 2 : Positive Influenza Tests (%) in Canada by Region by Week of Report

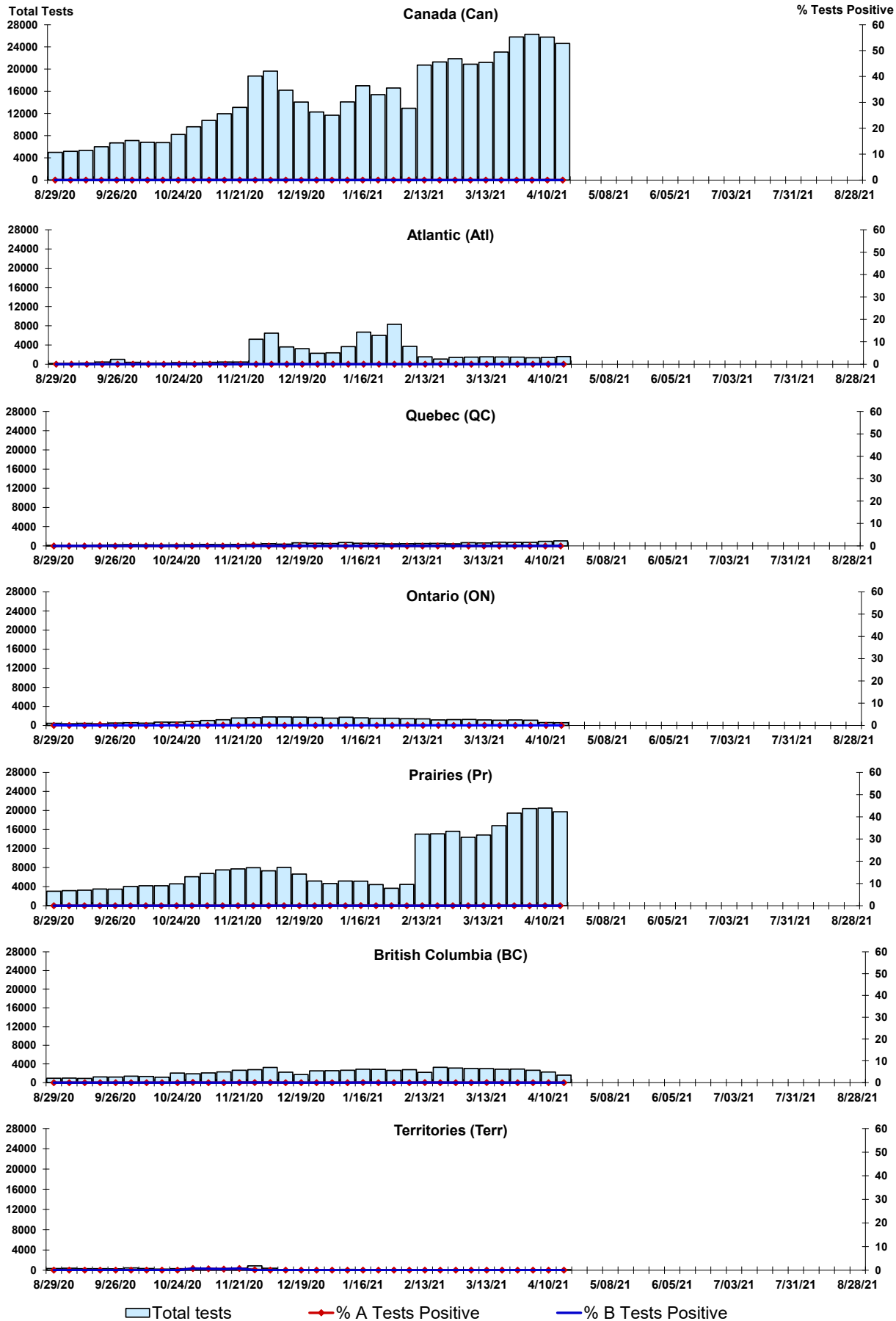


Figure 3: Positive Respiratory syncytial virus (RSV) Tests (%) in Canada by Region by Week of Report

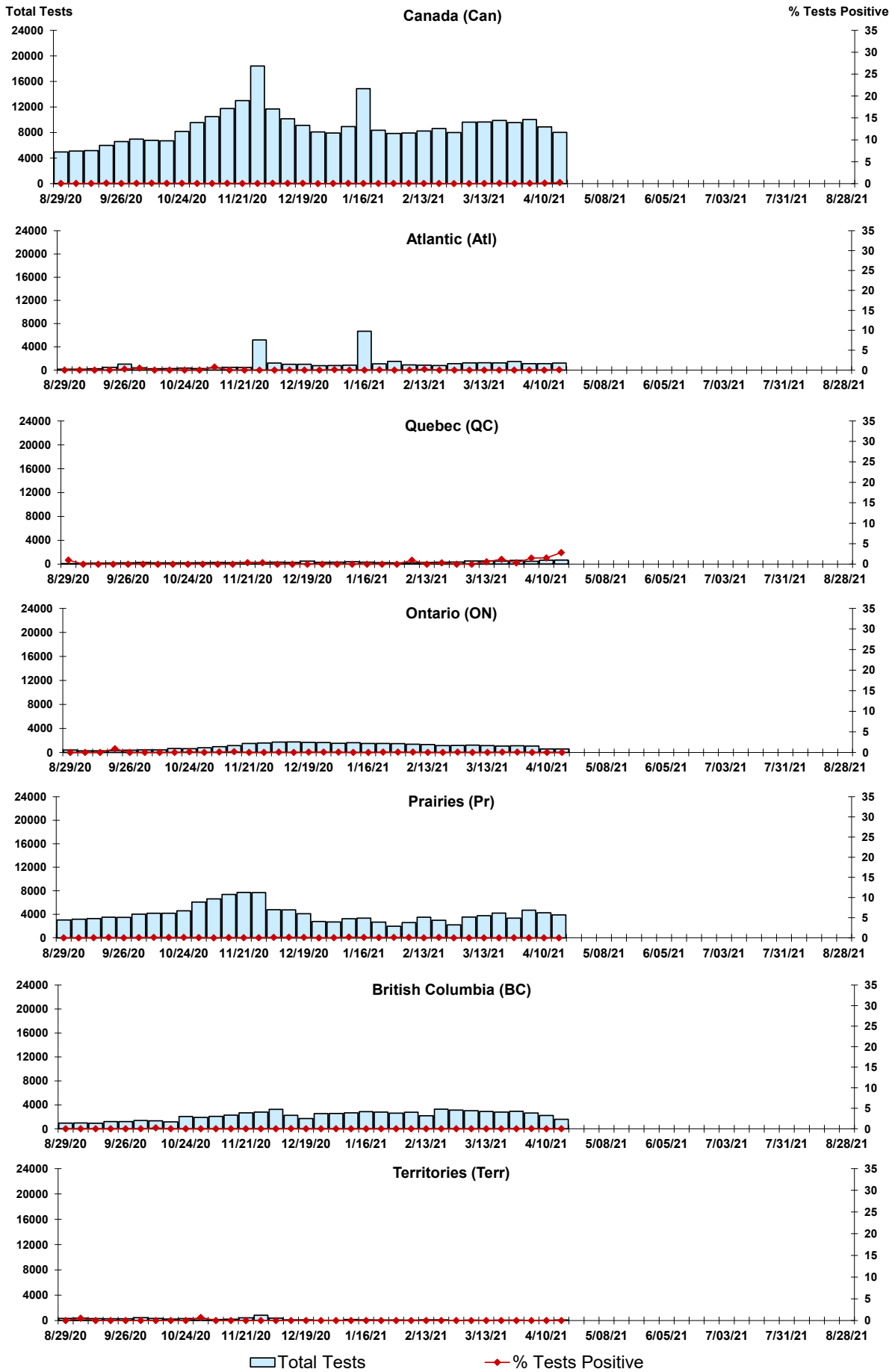
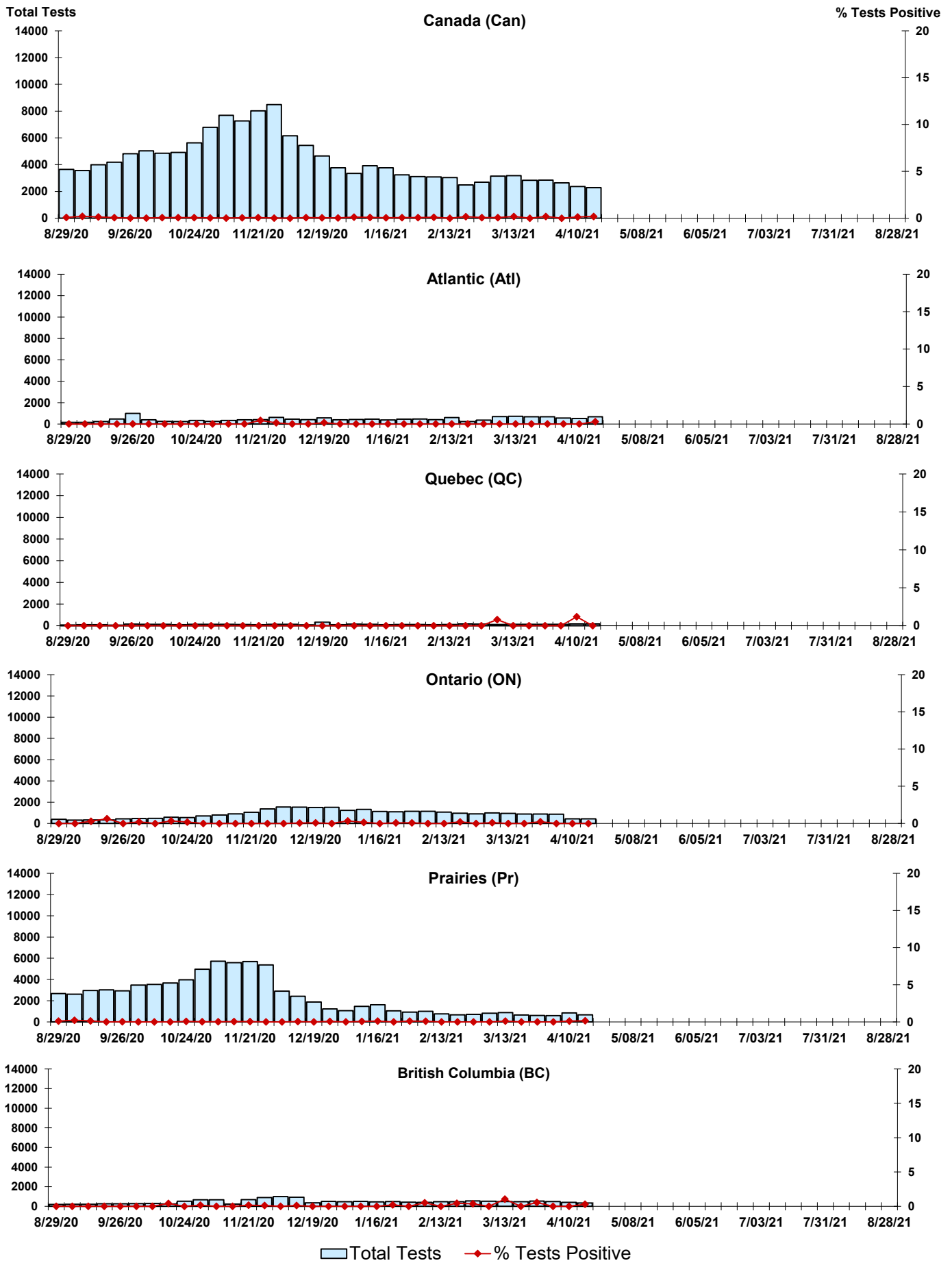


Figure 4: Positive Parainfluenza (PIV) Tests (%) in Canada by Region by Week of Report



Legend: Total Tests (light blue bar), % Tests Positive (red diamond)

Figure 5: Positive Adenovirus (adeno) Tests (%) in Canada by Region by Week of Report

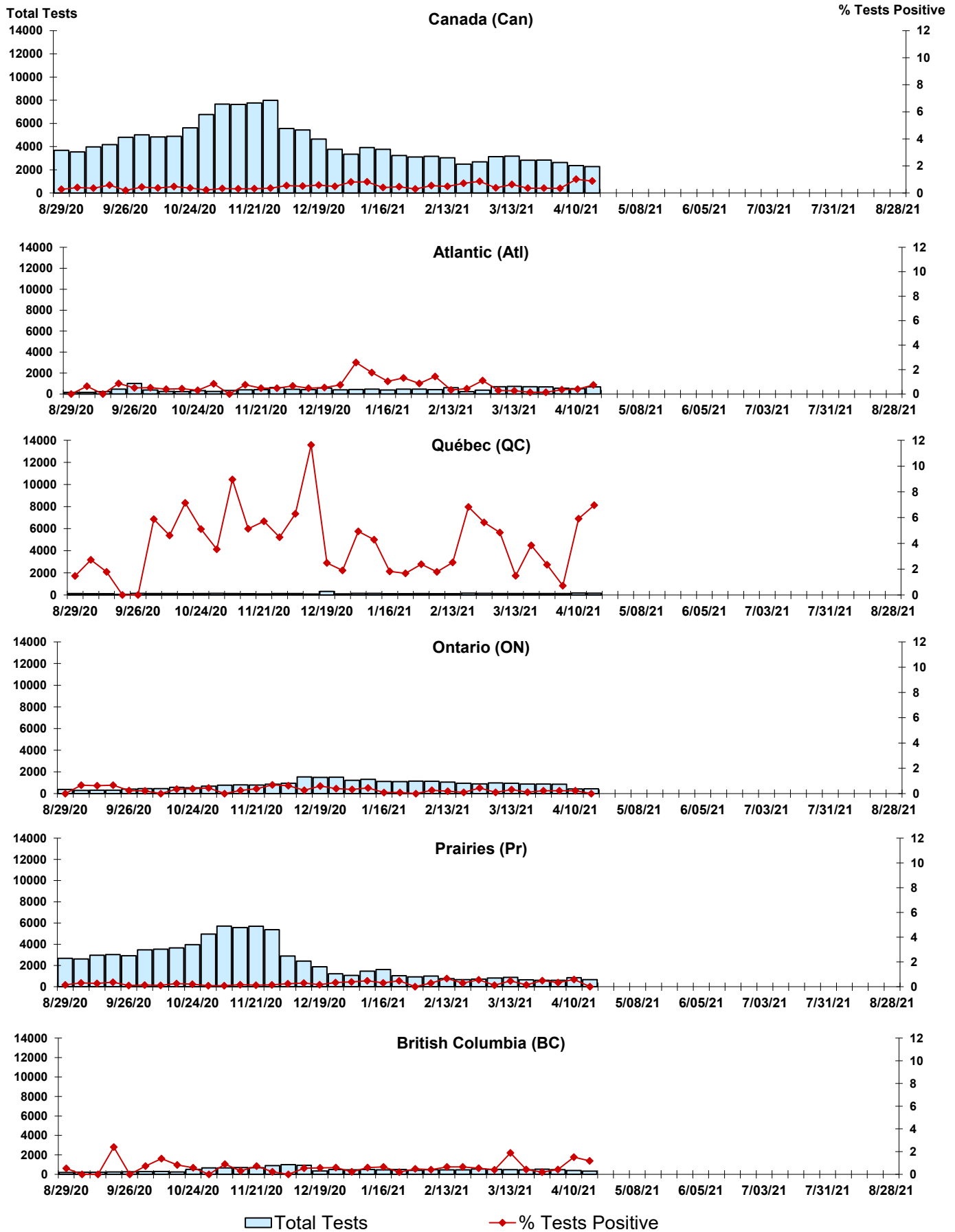
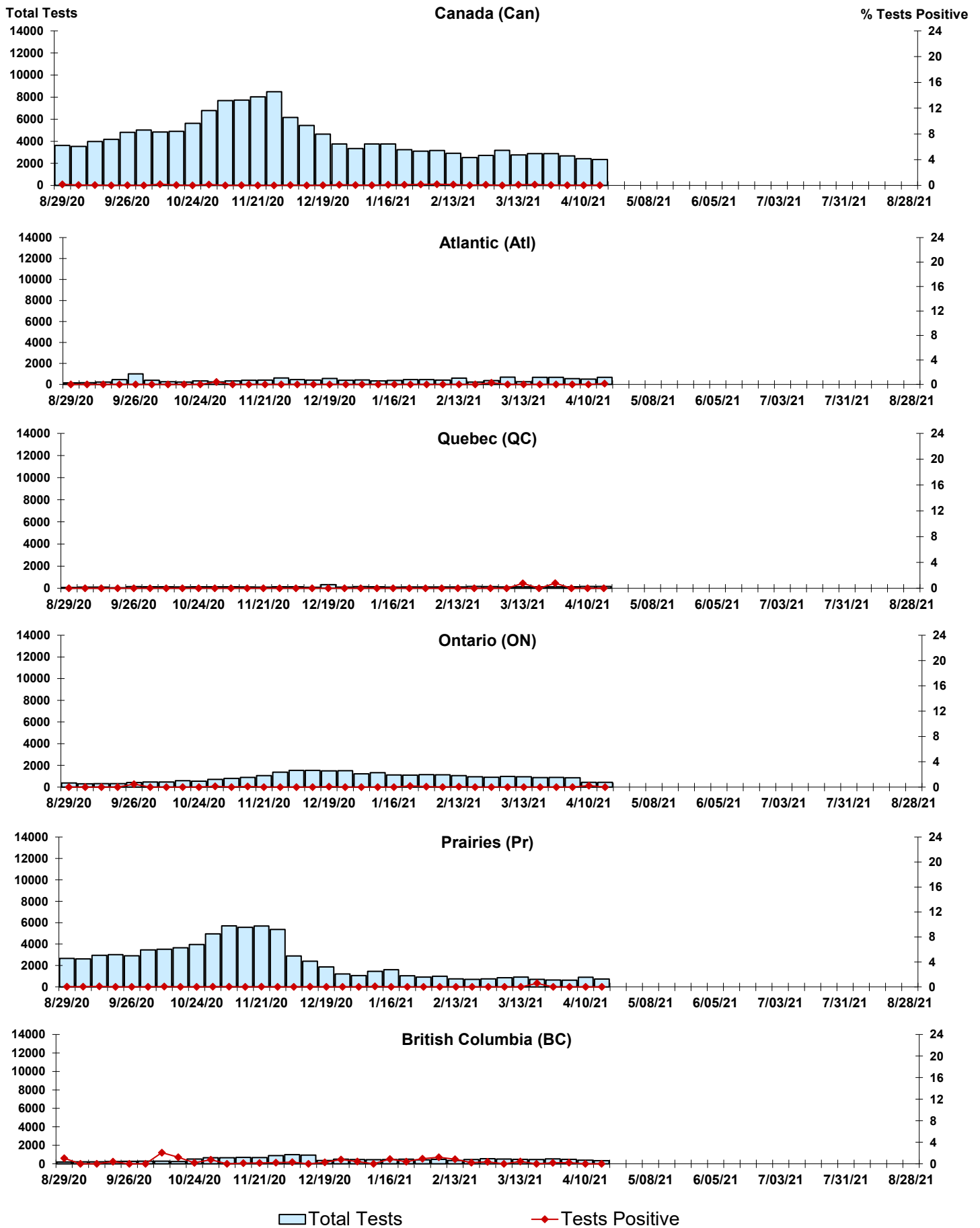


Figure 6: Positive human metapneumovirus (hMPV) Tests (%) in Canada by Region by Week of Report



Legend: Total Tests ◆ Tests Positive

Figure 7: Positive Enterovirus/Rhinovirus (entero/rhino) Tests (%) in Canada by Region by Week of Report

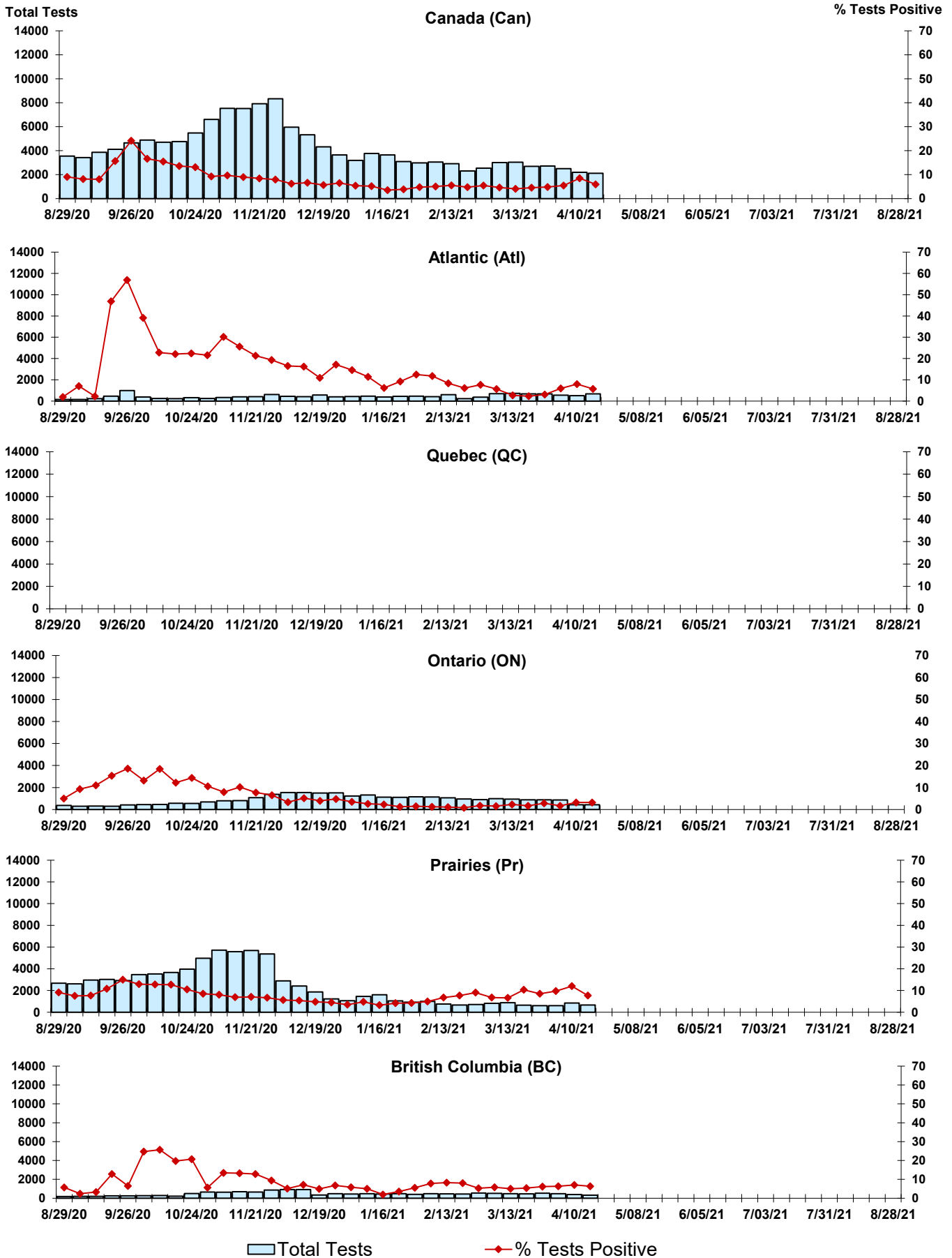
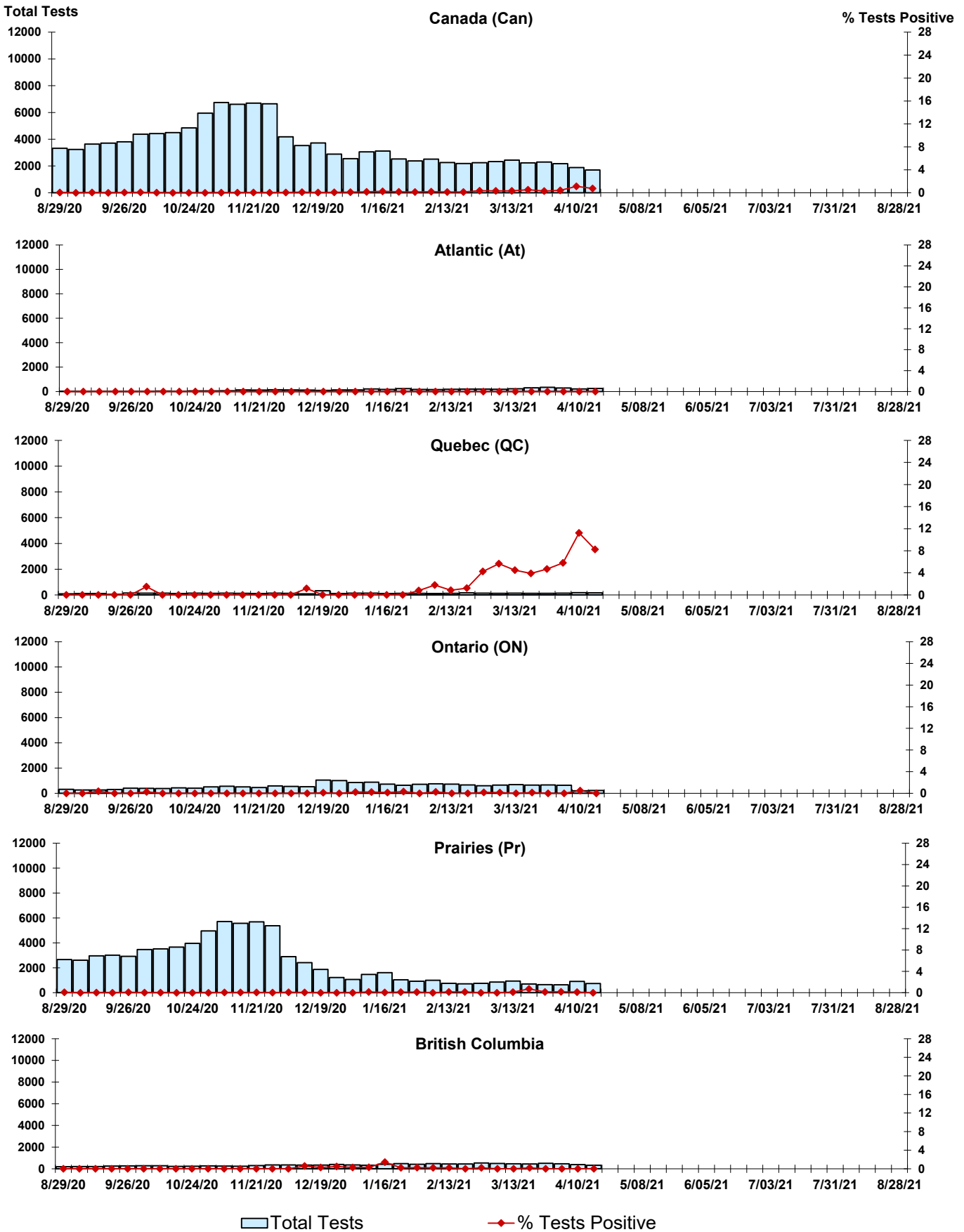


Figure 8: Positive Coronavirus (coron) Tests (%) in Canada by Region by Week of Report



Abbreviations:

A(H1N1)pdm09: Influenza A(H1N1)pdm09

A(H3): Influenza A(H3N2)

A (UnS): Influenza A (Unsubtyped)

Adeno: Adenovirus

CHEO: Children's Hospital of Eastern Ontario

Coron: Coronavirus

Enterovirus: Enterovirus

hMPV: human metapneumovirus

HSC: Health Sciences Centre

N.A.: Not Applicable

P.H.L.: Public Health Laboratory

P.H.O.L.: Public Health Ontario Laboratory

PIV: Parainfluenza

Rhino: Rhinovirus

RSV: Respiratory syncytial virus

UHN: University Health Network

Notes:

The data in the RVDSS report represent surveillance data available at the time of writing. Missing data are denoted by N.A.

Specimens from Yukon (YT), Northwest Territories (NT) and Nunavut (NU) are sent to reference laboratories in other provinces. Results reported for the Territories reflect the number of specimens that are identified as originating from YT, NT or NU.

Delays in the reporting of data may cause data to change retrospectively.

Due to reporting delays, the sum of weekly report totals do not add up to cumulative totals.