

# RESPIRATORY VIRUS DETECTION REPORT

March 13 to March 19, 2022  
(Surveillance Week 2022-11)



In this Respiratory Virus Report, the number of detections of coronavirus reflects only seasonal human coronaviruses, not the novel pandemic coronavirus (SARS-CoV-2) that causes COVID-19. For information on COVID-19, see the [Coronavirus disease \(COVID-19\): Outbreak update](#).

## Overall Summary

Detections of seasonal respiratory viruses have dropped sharply since the end of December 2021. In recent weeks, activity of seasonal respiratory viruses has stabilized and is within or below expected levels for this time of year.

- Activity of enterovirus/rhinovirus (229 detections; 9.0% positive) is increasing, but within expected levels for this time of year.
- Activity of other respiratory viruses is stable and low.
- In recent weeks, testing for all respiratory viruses has decreased.
  - Testing for influenza, respiratory syncytial virus, and enterovirus/rhinovirus remain within expected levels.
  - Testing for other respiratory viruses was below expected levels.
- 32/34 sentinel laboratories reported surveillance data.

## Abbreviations

Flu: Influenza

Flu A(H1N1)pdm09: Influenza A(H1N1)pdm09

Flu A(H3): Influenza A(H3N2)

Flu A (UnS): Influenza A(Unsubtyped)

RSV: Respiratory syncytial virus

HPIV: Human parainfluenza virus

HMPV: Human metapneumovirus

ADV: Adenovirus

EV/RV: Enterovirus/Rhinovirus

HCoV: Human coronavirus

Atl: Atlantic Canada

BC: British Columbia

Can: Canada

EORLA: Eastern Ontario Regional Laboratory Association

HSC: Health Sciences Centre

N.C.: Data not collected

N.R.: Data not reported for current week

ON: Ontario

PR: Prairies

P.H.O.L.: Public Health Ontario Laboratory

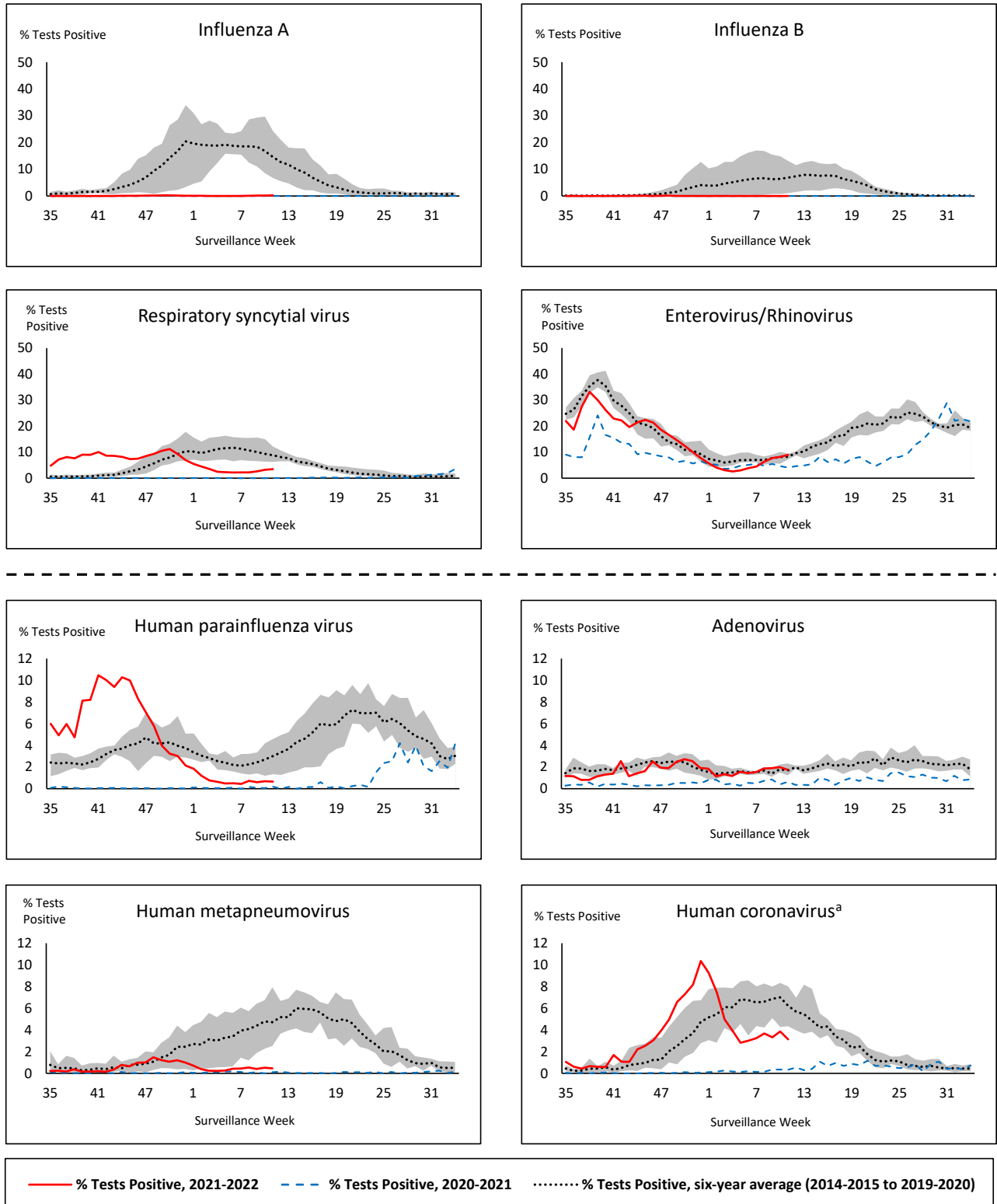
QC: Quebec

Terr: Territories of Canada

UHN: University Health Network



**Figure 1: Positive respiratory virus tests (%) reported by participating laboratories in Canada by surveillance week compared to average and range from 2014-2015 to 2019-2020 season**



Shaded area represents the maximum and minimum % of respiratory virus tests positive reported by week from seasons 2014-2015 to 2019-2020

Note: Data from week 11 of the 2019-2020 season onwards are excluded from the historical comparison due to the COVID-19 pandemic

Note: % Tests Positive scale changes across the dashed line

<sup>a</sup> Human coronavirus excludes human coronaviruses SARS-CoV, MERS-CoV and SARS-CoV-2; Includes seasonal human coronaviruses HCoV-229E, HCoV-OC43, HCoV-NL63, HCoV-HKU1.

**Table 1: Respiratory virus detections for the week ending March 19, 2022 (surveillance week 2022-11)**

Reporting Laboratory	Flu Tested	A(H1)pdm09 Positive	A(H3) Positive	A(UnS) Positive	Total Flu A Positive	Total Flu B Positive	RSV Tested	RSV Positive	HPIV Tested	HPIV 1 Positive	HPIV 2 Positive	HPIV 3 Positive	HPIV 4 Positive	Other HPIV Positive	ADV Tested	ADV Positive	HMPV Tested	HMPV Positive	EV/RV Tested	EV/RV Positive	HCoV Tested	HCoV Positive
Newfoundland	141	0	0	0	0	0	141	5	141	0	1	0	0	0	141	2	141	0	141	3	N.C.	N.C.
Prince Edward Island	51	0	0	0	0	0	51	18	51	0	0	0	0	0	51	1	51	3	51	10	51	2
Nova Scotia	518	0	0	0	0	0	518	0	25	0	0	0	1	0	25	0	25	0	25	4	25	1
New Brunswick	387	0	0	0	0	0	184	2	28	0	0	0	0	0	28	1	28	0	28	1	28	0
<b>Atlantic</b>	<b>1097</b>	<b>0</b>	<b>0</b>	<b>0</b>	<b>0</b>	<b>0</b>	<b>894</b>	<b>25</b>	<b>245</b>	<b>0</b>	<b>1</b>	<b>0</b>	<b>1</b>	<b>0</b>	<b>245</b>	<b>4</b>	<b>245</b>	<b>3</b>	<b>245</b>	<b>18</b>	<b>104</b>	<b>3</b>
Région Nord-Est	390	0	0	0	0	0	68	2	0	0	0	0	0	0	0	0	0	0	N.C.	N.C.	35	1
Québec-Chaudière-Appalaches	72	0	0	0	0	0	75	0	56	0	0	0	0	0	56	3	56	3	N.C.	N.C.	51	0
Centre-du-Québec	93	0	0	0	0	0	91	0	13	0	1	0	0	0	13	0	13	0	N.C.	N.C.	13	0
Montréal-Laval	239	0	0	3	3	0	366	3	169	0	0	0	0	0	169	8	169	1	N.C.	N.C.	169	1
Ouest du Québec	66	0	0	0	0	0	66	0	7	0	0	0	0	0	7	1	7	0	N.C.	N.C.	7	0
Montérégie	42	0	0	1	1	0	42	1	0	0	0	0	0	0	0	0	0	0	N.C.	N.C.	0	0
<b>Province of Québec</b>	<b>902</b>	<b>0</b>	<b>0</b>	<b>4</b>	<b>4</b>	<b>0</b>	<b>708</b>	<b>6</b>	<b>245</b>	<b>0</b>	<b>1</b>	<b>0</b>	<b>0</b>	<b>0</b>	<b>245</b>	<b>12</b>	<b>245</b>	<b>4</b>	<b>N.C.</b>	<b>N.C.</b>	<b>275</b>	<b>2</b>
P.H.O.L. - Ottawa	15	0	0	0	0	0	15	1	15	0	0	0	0	0	15	0	15	0	15	0	15	2
EORLA	121	0	0	0	0	0	121	4	23	0	0	0	1	0	23	0	23	0	23	5	23	0
P.H.O.L. - Kingston	11	0	0	0	0	0	11	0	11	0	0	0	0	0	11	0	10	0	11	1	10	1
UHN / Mount Sinai Hospital	376	0	0	1	1	0	376	2	9	0	0	0	0	0	9	0	9	0	9	0	9	0
P.H.O.L. - Toronto	171	0	0	0	0	0	171	1	171	0	0	0	0	2	171	2	171	0	171	15	171	9
Sick Kids Hospital - Toronto	N.R.	N.R.	N.R.	N.R.	N.R.	N.R.	N.R.	N.R.	N.R.	N.R.	N.R.	N.R.	N.R.	N.R.	N.R.	N.R.	N.R.	N.R.	N.R.	N.R.	N.R.	N.R.
Sunnybrook & Women's College HSC	N.R.	N.R.	N.R.	N.R.	N.R.	N.R.	N.R.	N.R.	N.R.	N.R.	N.R.	N.R.	N.R.	N.R.	N.R.	N.R.	N.R.	N.R.	N.R.	N.R.	N.R.	N.R.
P.H.O.L. - Sault Ste. Marie	6	0	0	0	0	0	6	0	6	0	0	0	0	0	6	0	6	0	6	0	6	0
P.H.O.L. - Timmins	6	0	0	0	0	0	6	2	6	0	0	0	0	0	6	0	6	0	6	1	6	0
St. Joseph's - London	367	0	0	2	2	0	367	4	367	0	0	0	0	0	367	4	367	0	367	30	2	0
P.H.O.L. - London	20	0	0	0	0	0	20	0	20	0	0	0	0	0	20	0	20	0	20	2	20	1
P.H.O.L. - Orillia	21	0	0	0	0	0	21	0	21	0	0	0	0	0	21	1	21	0	21	8	21	0
P.H.O.L. - Thunder Bay	6	0	0	0	0	0	6	0	6	0	0	0	0	0	6	0	6	0	6	0	6	1
P.H.O.L. - Sudbury	10	0	0	0	0	0	10	0	10	0	0	0	0	0	10	0	10	0	10	1	10	0
P.H.O.L. - Hamilton	19	0	0	0	0	0	19	0	19	0	0	0	0	0	19	0	19	0	19	0	19	3
P.H.O.L. - Peterborough	3	0	0	0	0	0	3	0	3	0	0	0	0	0	3	0	3	0	3	0	3	0
St. Joseph's - Hamilton	500	0	0	1	1	0	500	7	500	0	0	0	0	0	500	3	500	0	500	28	0	0
<b>Province of Ontario</b>	<b>1652</b>	<b>0</b>	<b>0</b>	<b>4</b>	<b>4</b>	<b>0</b>	<b>1652</b>	<b>21</b>	<b>1187</b>	<b>0</b>	<b>0</b>	<b>0</b>	<b>1</b>	<b>2</b>	<b>1187</b>	<b>10</b>	<b>1186</b>	<b>0</b>	<b>1187</b>	<b>91</b>	<b>321</b>	<b>17</b>
Province of Manitoba	617	0	0	0	0	0	617	40	90	1	1	2	0	0	90	2	100	0	90	5	100	3
Province of Saskatchewan	475	0	0	6	6	0	473	66	136	0	0	0	0	0	136	3	136	1	136	24	136	6
Province of Alberta	1429	0	1	8	9	0	625	84	625	0	0	3	2	0	625	12	625	4	625	54	625	14
<b>Prairies</b>	<b>2521</b>	<b>0</b>	<b>1</b>	<b>14</b>	<b>15</b>	<b>0</b>	<b>1715</b>	<b>190</b>	<b>851</b>	<b>1</b>	<b>1</b>	<b>5</b>	<b>2</b>	<b>0</b>	<b>851</b>	<b>17</b>	<b>861</b>	<b>5</b>	<b>851</b>	<b>83</b>	<b>861</b>	<b>23</b>
<b>British Columbia</b>	<b>2512</b>	<b>0</b>	<b>0</b>	<b>0</b>	<b>1</b>	<b>0</b>	<b>2374</b>	<b>13</b>	<b>235</b>	<b>0</b>	<b>0</b>	<b>1</b>	<b>2</b>	<b>0</b>	<b>235</b>	<b>5</b>	<b>235</b>	<b>1</b>	<b>227</b>	<b>37</b>	<b>227</b>	<b>11</b>
Yukon	83	0	0	0	0	0	83	2	N.C.	N.C.	N.C.	N.C.	N.C.	N.C.	N.C.	N.C.	N.C.	N.C.	N.C.	N.C.	N.C.	N.C.
Northwest Territories	36	0	0	0	0	0	36	11	0	0	0	0	0	0	0	0	0	0	36	0	0	0
Nunavut	197	0	0	0	0	0	197	0	N.C.	N.C.	N.C.	N.C.	N.C.	N.C.	N.C.	N.C.	N.C.	N.C.	N.C.	N.C.	N.C.	N.C.
<b>Territories</b>	<b>316</b>	<b>0</b>	<b>0</b>	<b>0</b>	<b>0</b>	<b>0</b>	<b>316</b>	<b>13</b>	<b>0</b>	<b>0</b>	<b>0</b>	<b>0</b>	<b>0</b>	<b>0</b>	<b>0</b>	<b>0</b>	<b>0</b>	<b>0</b>	<b>36</b>	<b>0</b>	<b>0</b>	<b>0</b>
<b>CANADA</b>	<b>9000</b>	<b>0</b>	<b>1</b>	<b>22</b>	<b>24</b>	<b>0</b>	<b>7659</b>	<b>268</b>	<b>2763</b>	<b>1</b>	<b>3</b>	<b>6</b>	<b>6</b>	<b>2</b>	<b>2763</b>	<b>48</b>	<b>2772</b>	<b>13</b>	<b>2546</b>	<b>229</b>	<b>1788</b>	<b>56</b>

The data in the RVDSS report represent surveillance data available at the time of writing. Data missing from the current week are denoted by N.R. Data not collected by reporting lab denoted by N.C.

The reporting laboratory previously listed as CHEO - Ottawa is now listed as EORLA to better reflect data submitted by this provider.

Specimens from Yukon (YT) are sent to reference laboratories in British Columbia and reported results reflect specimens identified as originating from YT.

Results from British Columbia comprise of specimens from the following sites: BC Children's and Women's Hospital, Children's and Women's Hospital Laboratory, Fraser Health Medical Microbiology Laboratory, Island Health, Providence Health Care, Powell River Hospital , St. Paul's Hospital , Vancouver General Hospital, Victoria General Hospital, BCCDC Public Health Laboratory, Interior Health Authority sites and Northern Health Authority sites.

Delays in the reporting of data may cause data to change retrospectively.

For British Columbia, only data from subtyped influenza A specimens are included in the weekly number of influenza detections. The sum of A(H1N1)pdm09, A(H3), and A(UnS) positive results may not equal the sum of total Flu A positive results.

**Table 2: Cumulative respiratory virus detections from August 29, 2021 to March 19, 2022 (surveillance week 2021-35 to 2022-11)**

Reporting Laboratory	Flu Tested	A(H1)pdm09 Positive	A(H3) Positive	A(UnS) Positive	Total Flu A Positive	Total Flu B Positive	RSV Tested	RSV Positive	HPIV Tested	HPIV 1 Positive	HPIV 2 Positive	HPIV 3 Positive	HPIV 4 Positive	Other HPIV Positive	ADV Tested	ADV Positive	HMPV Tested	HMPV Positive	EV/RV Tested	EV/RV Positive	HCov Tested	HCov Positive
Newfoundland	7987	0	0	0	0	0	7986	94	7989	1	5	116	0	154	7996	28	7983	33	7990	1733	N.C.	N.C.
Prince Edward Island	1978	0	0	0	0	0	1978	179	1933	0	0	152	0	0	1978	52	1978	8	1978	468	1978	104
Nova Scotia	14323	0	1	12	13	4	14322	308	1328	0	2	38	8	0	1342	11	1342	4	1342	100	1342	31
New Brunswick	12074	0	0	6	6	0	7616	265	2627	0	0	23	1	0	2620	14	2627	6	2627	40	2536	5
<b>Atlantic</b>	<b>36362</b>	<b>0</b>	<b>1</b>	<b>18</b>	<b>19</b>	<b>4</b>	<b>31902</b>	<b>846</b>	<b>13877</b>	<b>1</b>	<b>7</b>	<b>329</b>	<b>9</b>	<b>154</b>	<b>13936</b>	<b>105</b>	<b>13930</b>	<b>51</b>	<b>13937</b>	<b>2341</b>	<b>5856</b>	<b>140</b>
Région Nord-Est	15413	1	0	2	3	3	6986	1436	591	0	0	6	1	0	690	15	116	2	N.C.	N.C.	959	15
Québec-Chaudière-Appalaches	4643	0	0	6	6	4	5215	994	1322	0	3	7	6	0	1330	58	1241	55	N.C.	N.C.	1131	44
Centre-du-Québec	5577	0	0	3	3	4	5708	1081	500	0	2	19	0	0	500	23	508	18	N.C.	N.C.	493	9
Montréal-Laval	17182	0	0	39	39	4	17183	2443	5795	6	4	21	5	0	5794	348	5792	331	N.C.	N.C.	5791	70
Ouest du Québec	4321	0	1	7	8	0	4278	929	83	0	0	3	3	0	76	6	72	1	N.C.	N.C.	72	1
Montérégie	2629	0	0	4	4	0	2612	387	0	0	0	0	0	0	0	0	0	0	N.C.	N.C.	0	0
<b>Province of Québec</b>	<b>49765</b>	<b>1</b>	<b>1</b>	<b>61</b>	<b>63</b>	<b>15</b>	<b>41982</b>	<b>7270</b>	<b>8291</b>	<b>6</b>	<b>9</b>	<b>56</b>	<b>15</b>	<b>0</b>	<b>8390</b>	<b>450</b>	<b>7729</b>	<b>407</b>	<b>N.C.</b>	<b>N.C.</b>	<b>8446</b>	<b>139</b>
P.H.O.L. - Ottawa	6442	2	1	0	3	0	6442	1438	6442	0	0	0	0	728	6442	311	6441	38	6442	2205	6441	263
EORLA	5272	0	0	1	1	0	5247	605	720	0	2	19	1	0	720	13	401	3	720	132	378	16
P.H.O.L. - Kingston	1152	0	0	0	0	0	1151	120	1150	0	0	0	0	129	1150	19	1144	2	1150	284	1144	80
UHN / Mount Sinai Hospital	13408	0	0	11	11	2	13408	91	427	0	0	0	0	0	427	0	427	0	427	11	427	2
P.H.O.L. - Toronto	7232	1	19	1	21	0	7208	266	7208	0	0	0	0	267	7211	90	7207	13	7208	900	7208	220
Sick Kids Hospital - Toronto	839	0	0	0	0	0	0	0	839	0	2	68	1	0	839	12	839	1	839	233	839	10
Sunnybrook & Women's College HSC	0	0	0	0	0	0	0	0	0	0	0	0	0	0	0	0	0	0	0	0	0	0
P.H.O.L. - Sault Ste. Marie	265	0	1	0	1	0	263	5	263	0	0	0	0	7	263	3	263	1	263	48	263	17
P.H.O.L. - Timmins	326	0	0	0	0	0	326	16	326	0	0	0	0	18	326	1	326	0	326	31	326	26
St. Joseph's - London	11401	0	0	18	18	0	11404	754	9847	0	0	7	0	84	9847	116	9847	9	9801	495	507	2
P.H.O.L. - London	2892	0	6	0	6	0	2885	452	2885	0	0	0	0	154	2885	64	2884	10	2885	404	2884	216
P.H.O.L. - Orillia	731	0	1	0	1	0	731	103	731	0	0	0	0	41	731	25	728	6	731	183	728	51
P.H.O.L. - Thunder Bay	258	0	0	0	0	0	258	18	258	0	0	0	0	21	258	0	258	0	258	49	258	30
P.H.O.L. - Sudbury	274	0	0	0	0	0	274	10	274	0	0	0	0	9	274	1	274	2	274	30	274	8
P.H.O.L. - Hamilton	1392	0	7	0	7	0	1384	68	1384	0	0	0	0	43	1385	10	1384	6	1384	203	1384	82
P.H.O.L. - Peterborough	528	0	0	0	0	0	528	44	521	0	0	0	0	11	521	1	519	0	521	85	519	35
St. Joseph's - Hamilton	17250	0	4	8	12	1	17244	1610	17244	2	0	648	0	0	17244	179	17244	27	17244	1689	0	0
<b>Province of Ontario</b>	<b>69662</b>	<b>3</b>	<b>39</b>	<b>39</b>	<b>81</b>	<b>3</b>	<b>68753</b>	<b>5600</b>	<b>50519</b>	<b>2</b>	<b>4</b>	<b>742</b>	<b>2</b>	<b>1512</b>	<b>50523</b>	<b>845</b>	<b>50186</b>	<b>118</b>	<b>50473</b>	<b>6982</b>	<b>23580</b>	<b>1058</b>
Manitoba	45197	1	15	8	24	0	45197	798	1771	2	6	72	0	0	1771	25	2883	6	1771	210	2689	57
Province of Saskatchewan	21124	2	10	27	39	0	21096	515	3299	0	1	195	28	0	3298	58	3298	7	3298	458	3296	198
Province of Alberta	58003	0	12	45	57	2	23338	2460	23338	0	22	656	142	0	23338	222	23338	66	23338	2929	23338	1268
<b>Prairies</b>	<b>124324</b>	<b>3</b>	<b>37</b>	<b>80</b>	<b>120</b>	<b>2</b>	<b>89631</b>	<b>3773</b>	<b>28408</b>	<b>2</b>	<b>29</b>	<b>923</b>	<b>170</b>	<b>0</b>	<b>28407</b>	<b>305</b>	<b>29519</b>	<b>79</b>	<b>28407</b>	<b>3597</b>	<b>29323</b>	<b>1523</b>
<b>British Columbia</b>	<b>150119</b>	<b>4</b>	<b>40</b>	<b>3</b>	<b>174</b>	<b>85</b>	<b>147383</b>	<b>8540</b>	<b>17381</b>	<b>6</b>	<b>7</b>	<b>1051</b>	<b>174</b>	<b>143</b>	<b>17381</b>	<b>321</b>	<b>17377</b>	<b>66</b>	<b>17009</b>	<b>2856</b>	<b>17058</b>	<b>416</b>
Yukon	4962	0	1	0	4	7	4977	291	N.C.	N.C.	N.C.	N.C.	N.C.	N.C.	N.C.	N.C.	N.C.	N.C.	N.C.	N.C.	N.C.	N.C.
Northwest Territories	786	0	0	0	0	0	738	37	74	0	0	1	0	0	74	2	74	0	737	98	74	0
Nunavut	14768	0	0	0	0	0	14754	8	N.C.	N.C.	N.C.	N.C.	N.C.	N.C.	N.C.	N.C.	N.C.	N.C.	N.C.	N.C.	N.C.	N.C.
<b>Territories</b>	<b>20516</b>	<b>0</b>	<b>1</b>	<b>0</b>	<b>4</b>	<b>7</b>	<b>20469</b>	<b>336</b>	<b>95</b>	<b>0</b>	<b>0</b>	<b>2</b>	<b>0</b>	<b>0</b>	<b>95</b>	<b>3</b>	<b>95</b>	<b>0</b>	<b>758</b>	<b>106</b>	<b>92</b>	<b>0</b>
<b>CANADA</b>	<b>450748</b>	<b>11</b>	<b>119</b>	<b>201</b>	<b>461</b>	<b>116</b>	<b>400120</b>	<b>26365</b>	<b>118571</b>	<b>17</b>	<b>56</b>	<b>3103</b>	<b>370</b>	<b>1809</b>	<b>118732</b>	<b>2029</b>	<b>118836</b>	<b>721</b>	<b>110584</b>	<b>15882</b>	<b>84355</b>	<b>3276</b>

The data in the RVDSS report represent surveillance data available at the time of writing. Data not collected by reporting lab denoted by N.C.

Note: Included in the cumulative detections this season are 11 co-infections of influenza A and B (total of 22 detections) that are suspected to be associated with recent live attenuated influenza vaccine (LAIV) receipt. Co-infections known or reported to be associated with recent LAIV are removed by the submitting laboratory or by PHAC beginning in week 44 as they do not represent community transmission of seasonal influenza viruses.

The reporting laboratory previously listed as CHEO - Ottawa is now listed as EORLA to better reflect data submitted by this provider.

Specimens from Yukon (YT) are sent to reference laboratories in British Columbia and reported results reflect specimens identified as originating from YT.

Results from British Columbia comprise of specimens from the following sites: BC Children's and Women's Hospital, Children's and Women's Hospital Laboratory, Fraser Health Medical Microbiology Laboratory, Island Health, Providence Health Care, Powell River Hospital, St. Paul's Hospital, Vancouver General Hospital, Victoria General Hospital, BCCDC Public Health Laboratory, Interior Health Authority sites and Northern Health Authority sites.

Delays in the reporting of data may cause data to change retrospectively. Due to these delays, the sum of weekly report totals do not add up to cumulative totals.

For British Columbia, only data from subtyped influenza A specimens are included in the weekly number of influenza detections. The sum of A(H1N1)pdm09, A(H3), and A(UnS) positive results may not equal the sum of total Flu A positive results.

**Figure 2: Number of positive respiratory virus tests reported by participating laboratories in Canada by surveillance week**

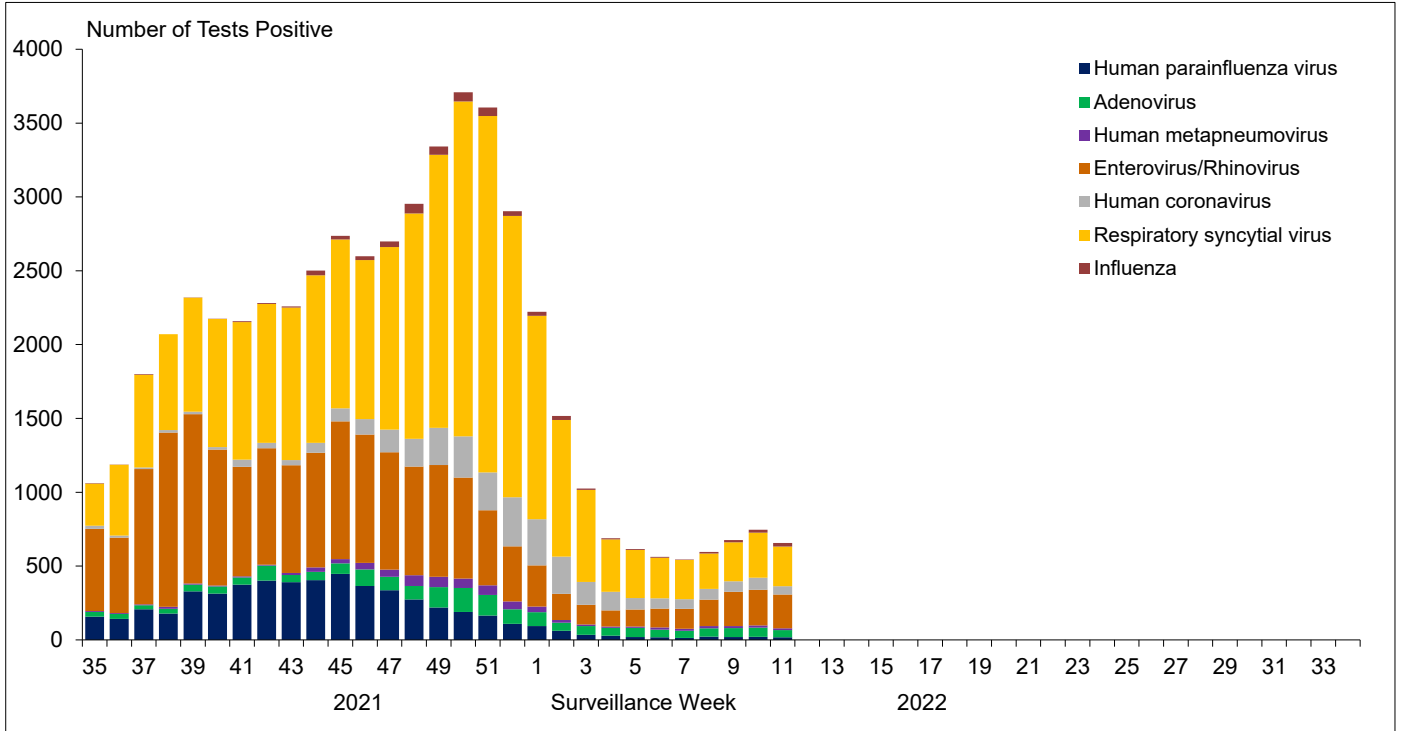


Figure 3: Positive Influenza (Flu) tests (%) in Canada by region by surveillance week

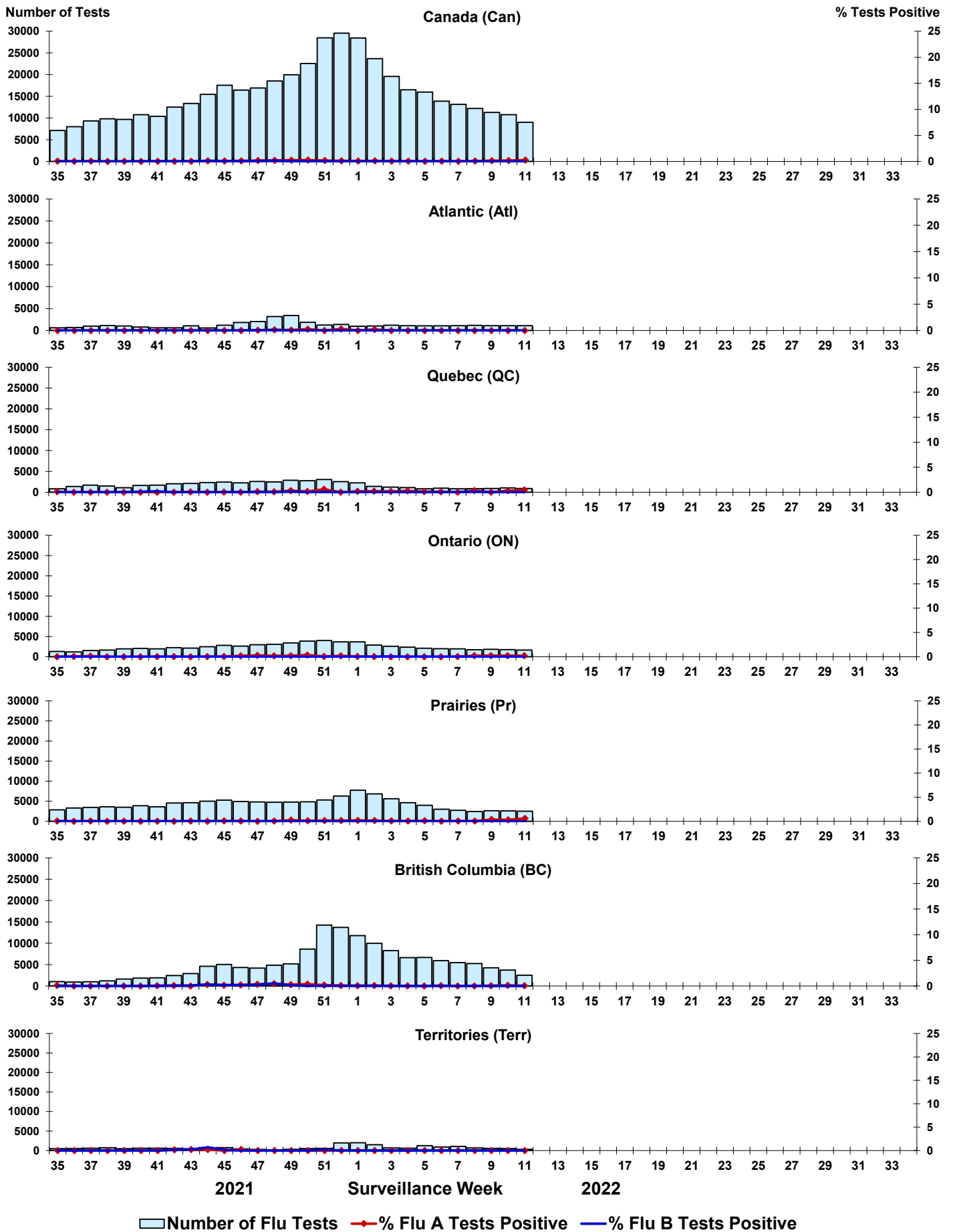


Figure 4: Positive Respiratory syncytial virus (RSV) tests (%) in Canada by region by surveillance week

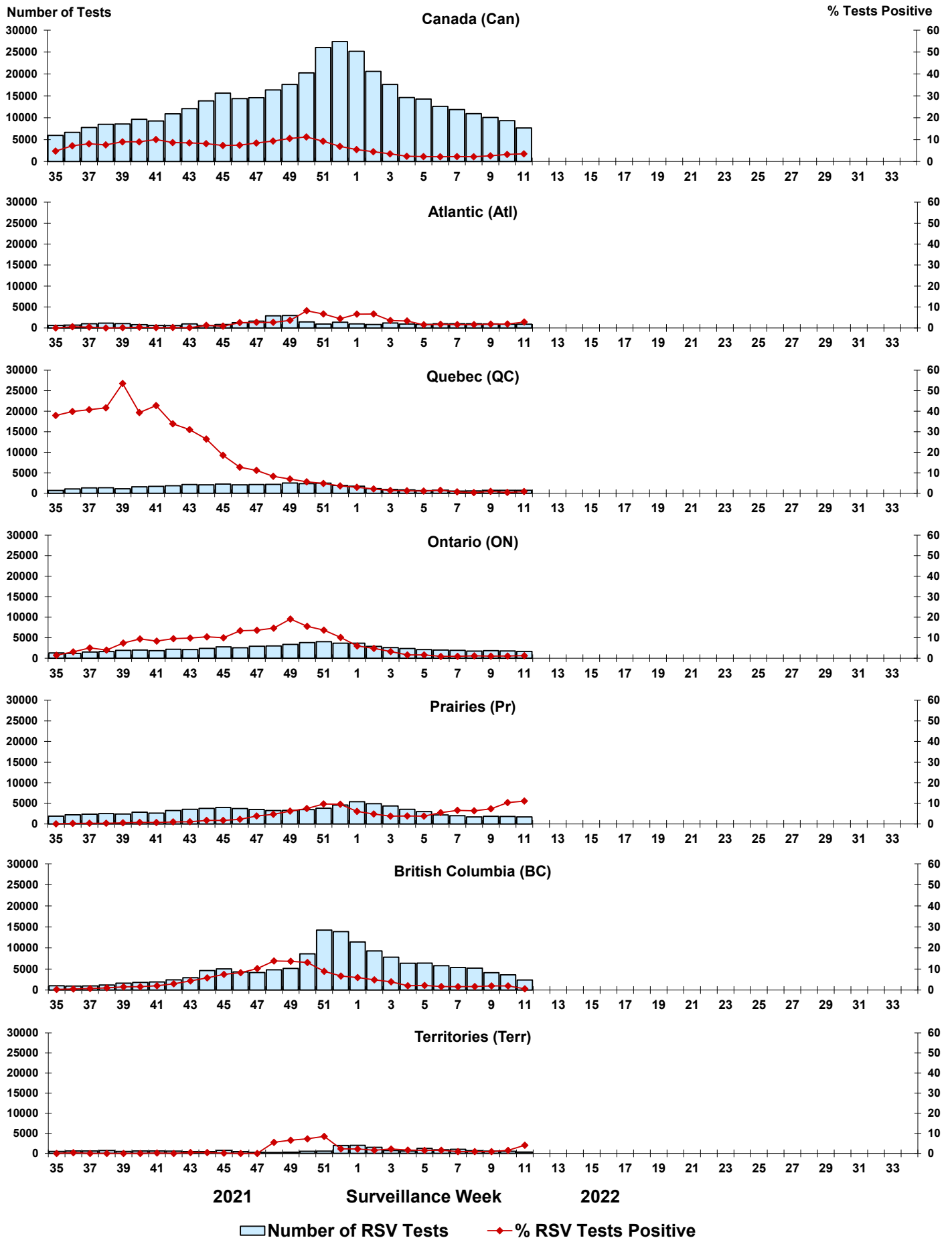


Figure 5: Positive Human parainfluenza virus (HPIV) tests (%) in Canada by region by surveillance week

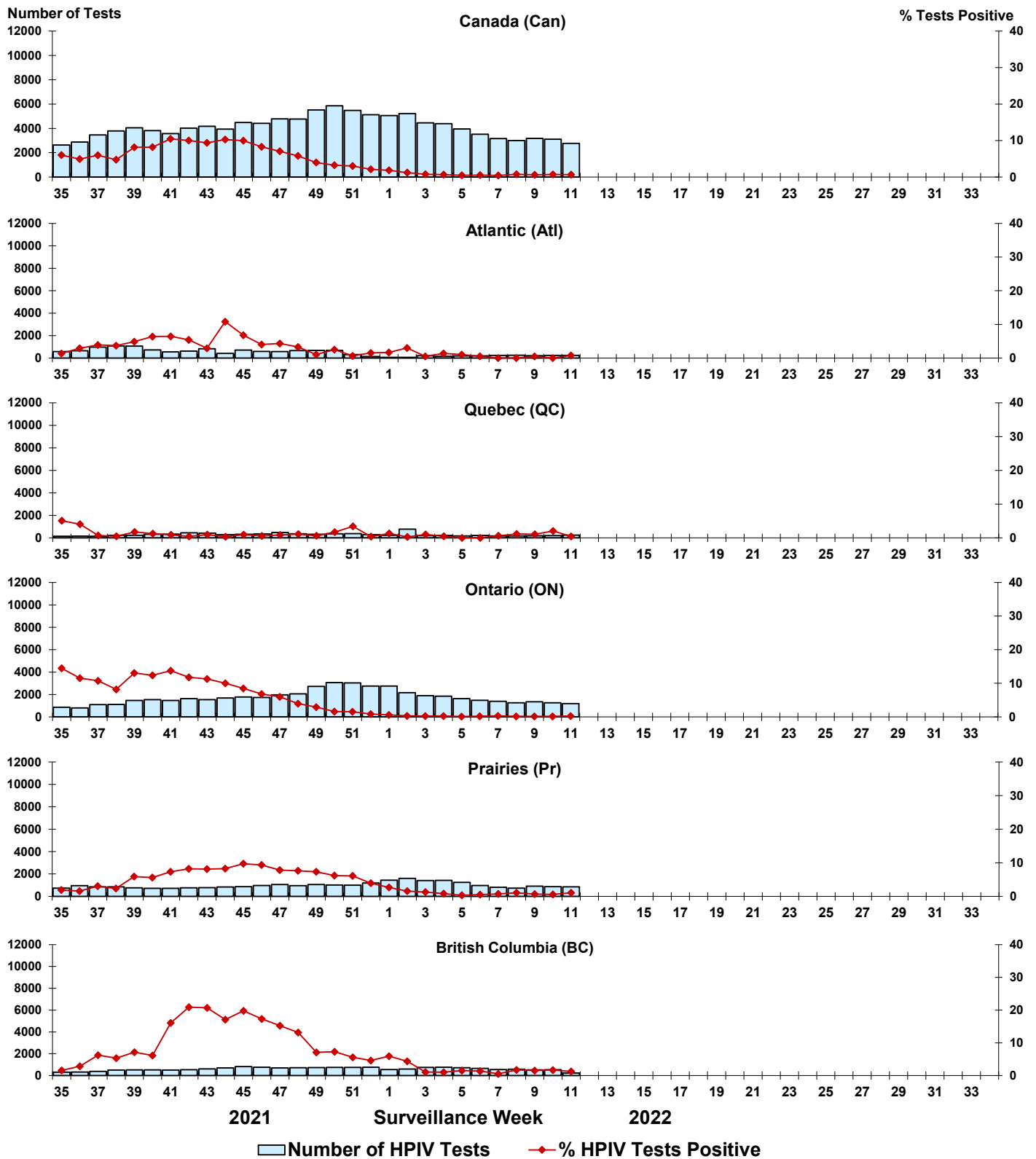




Figure 6: Positive Adenovirus (ADV) tests (%) in Canada by region by surveillance week

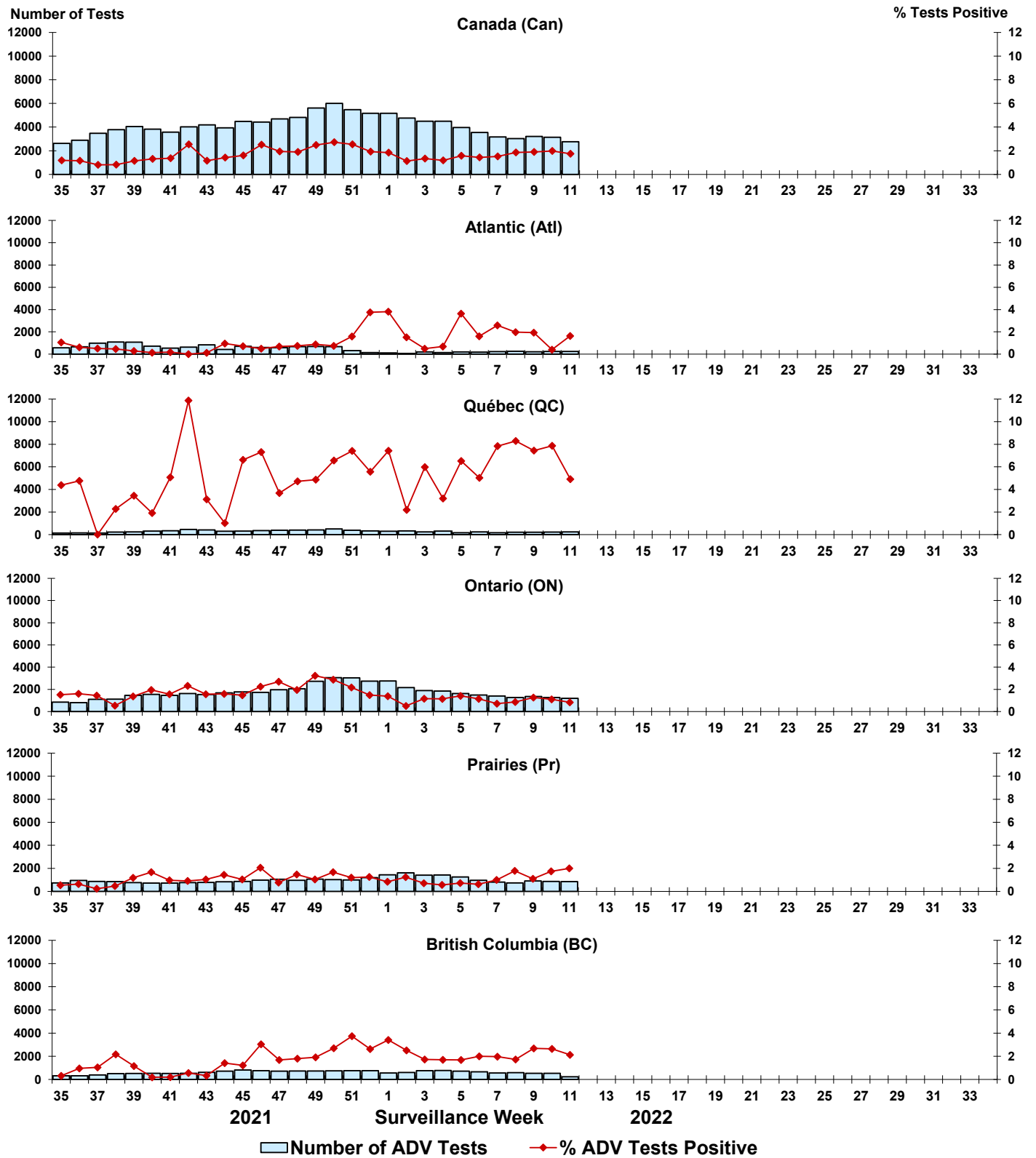


Figure 7: Positive Human metapneumovirus (HMPV) tests (%) in Canada by region by surveillance week

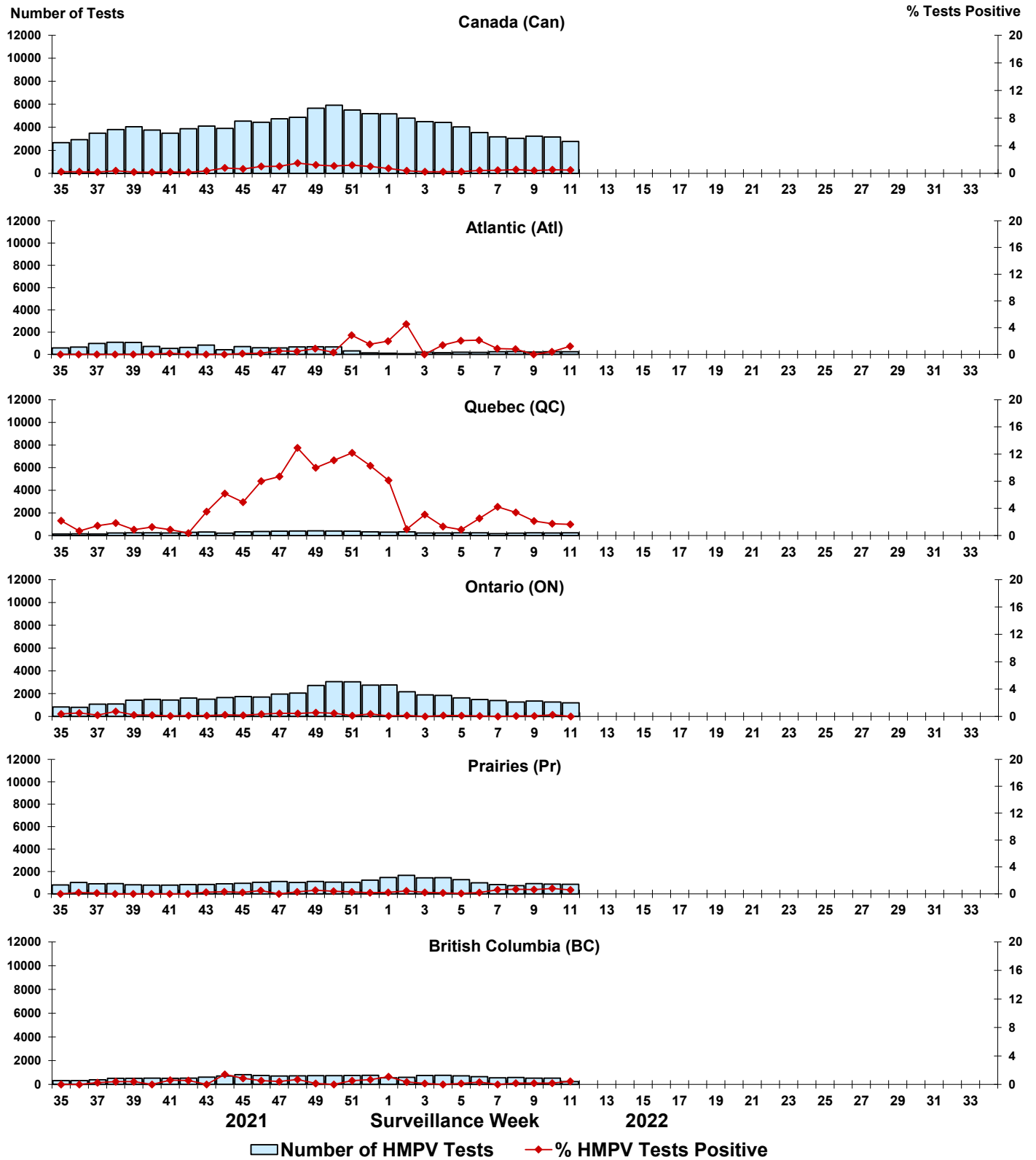


Figure 8: Positive Enterovirus/Rhinovirus (EV/RV) tests (%) in Canada by region by surveillance week

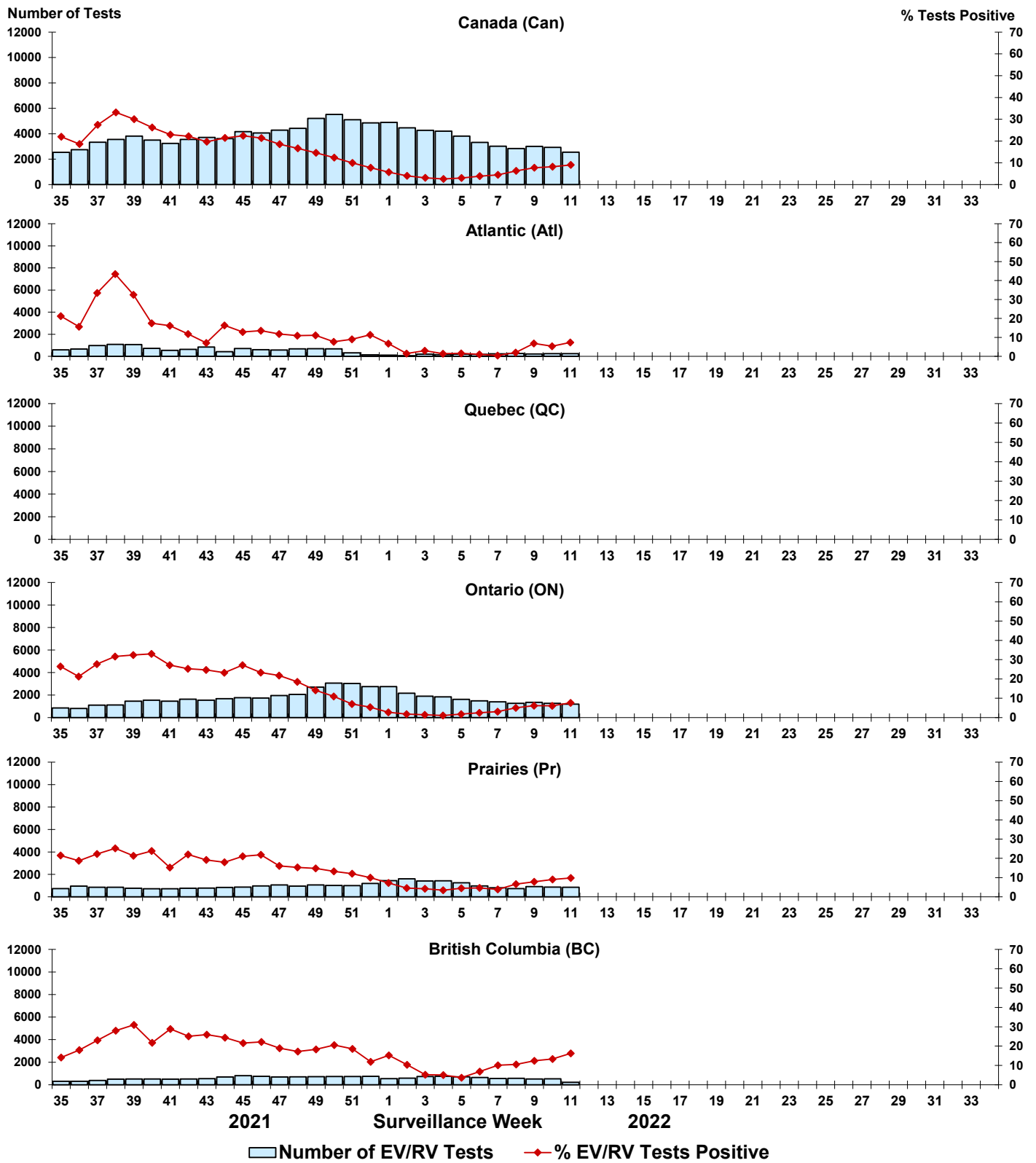


Figure 9: Positive Human coronavirus (HCoV) tests (%) in Canada by region by surveillance week

