

Respiratory Virus Detections in Canada

Respiratory Virus Report, Week 06 - ending February 8, 2020

The Respiratory Virus Detection Surveillance System collects data from select laboratories across Canada on the number of tests performed and the number of tests positive for influenza and other respiratory viruses. Data are reported on a weekly basis year-round to the Centre for Immunization and Respiratory Infectious Diseases (CIRID), Public Health Agency of Canada. These data are also summarized in the weekly FluWatch report.

Table 1: Respiratory Virus Detections/Isolations for the week ending February 8, 2020 (Reporting Week 202006)

Reporting Laboratory	Flu Tested	A(H1N1)pdm09 Positive	A(H3) Positive	A(UnS) Positive	Total Flu A Positive	Total Flu B Positive	RSV Tested	RSV Positive	PIV Tested	PIV 1 Positive	PIV 2 Positive	PIV 3 Positive	PIV 4 Positive	Other PIV Positive	Adeno Tested	Adeno Positive	hMPV Tested	hMPV Positive	Entero/Rhino Tested	Entero/Rhino Positive	Coron Tested	Coron Positive
Newfoundland	144	0	0	2	2	32	144	10	144	6	1	0	0	0	144	2	144	3	144	2	N.A.	N.A.
Prince Edward Island	72	0	0	10	10	7	72	14	1	0	0	0	0	0	1	0	1	0	1	0	1	0
Nova Scotia	175	0	0	11	11	20	191	42	23	0	0	0	0	0	23	1	23	3	23	0	23	1
New Brunswick	711	0	0	79	79	203	711	83	122	2	0	0	1	0	122	1	122	0	122	8	122	6
Atlantic	1102	0	0	102	102	262	1118	149	290	8	1	0	1	0	290	4	290	6	290	10	146	7
Région Nord-Est	717	0	0	113	113	197	662	72	0	0	0	0	0	0	0	0	0	0	N.A.	N.A.	0	0
Québec-Chaudière-Appalaches	1200	0	0	207	207	328	1107	159	91	2	0	0	0	0	92	3	72	2	N.A.	N.A.	27	1
Centre-du-Québec	1457	0	0	244	244	320	1155	115	0	0	0	0	0	0	0	0	0	0	N.A.	N.A.	0	0
Montréal-Laval	1800	0	0	308	308	166	1728	163	696	5	0	2	0	0	696	20	696	22	N.A.	N.A.	696	7
Ouest du Québec	771	0	0	163	163	105	705	88	0	0	0	0	0	0	0	0	0	0	N.A.	N.A.	0	0
Montérégie	524	0	0	88	88	85	524	38	0	0	0	0	0	0	0	0	0	0	N.A.	N.A.	0	0
Province of Québec	6469	0	0	1123	1123	1201	5881	635	787	7	0	2	0	0	788	23	768	24	N.A.	N.A.	723	8
P.H.O.L. - Ottawa	51	7	0	0	7	6	51	3	51	0	0	0	0	0	51	1	51	1	51	2	51	0
CHEO - Ottawa	314	0	0	59	59	22	314	38	29	2	0	0	2	0	29	1	29	0	29	4	29	0
P.H.O.L. - Kingston	26	1	0	0	1	2	26	0	26	0	0	0	0	0	26	0	26	1	26	0	26	0
UHN / Mount Sinai Hospital	399	0	0	28	28	22	399	14	17	0	0	0	0	0	0	0	17	0	0	0	N.A.	N.A.
P.H.O.L. - Toronto	678	85	4	0	89	27	668	19	668	0	0	0	0	0	668	6	660	14	668	25	660	0
Sick Kids Hospital - Toronto	133	7	0	10	17	19	65	5	65	1	0	0	1	0	65	2	65	1	65	15	65	10
Sunnybrook & Women's College HSC	81	0	0	5	5	2	81	5	0	0	0	0	0	0	0	0	0	0	0	0	0	0
P.H.O.L. - Sault Ste. Marie	21	0	0	0	0	0	21	3	21	0	0	0	0	0	21	0	21	3	21	1	21	0
P.H.O.L. - Timmins	24	9	0	0	9	5	17	1	17	0	0	0	0	0	17	0	17	0	17	0	17	0
St. Joseph's - London	210	0	0	20	20	7	210	22	76	0	1	0	0	0	76	0	76	0	43	2	43	2
P.H.O.L. - London	200	28	4	1	33	19	199	16	199	0	0	0	0	0	199	2	199	5	199	12	199	0
P.H.O.L. - Orillia	53	6	3	0	9	0	53	9	53	0	0	0	0	0	53	1	53	3	53	1	53	0
P.H.O.L. - Thunder Bay	29	7	0	1	8	1	29	2	29	0	0	0	0	0	29	3	29	6	29	3	29	0
P.H.O.L. - Sudbury	47	7	1	1	9	0	47	5	47	0	0	0	0	0	47	2	47	3	47	0	47	0
P.H.O.L. - Hamilton	191	22	1	0	23	17	184	9	184	0	0	0	0	0	184	6	182	10	184	18	182	0
P.H.O.L. - Peterborough	35	6	0	0	6	0	35	2	35	0	0	0	0	0	35	0	35	0	35	0	35	0
St. Joseph's - Hamilton	800	0	0	138	138	73	800	50	800	2	0	2	0	0	800	13	800	25	800	41	0	0
Province of Ontario	3292	185	13	263	461	222	3199	203	2317	5	1	2	3	0	2300	37	2307	72	2267	124	1457	12
Manitoba	0	0	0	0	0	0	0	0	0	0	0	0	0	0	0	0	0	0	0	0	0	0
Regina	451	0	0	92	92	52	451	56	167	3	2	0	0	0	167	2	167	10	167	8	167	8
Saskatoon	285	0	0	29	29	12	285	28	285	0	3	0	1	0	285	1	285	2	285	8	285	3
Saskatchewan	736	0	0	121	121	64	736	84	452	3	5	0	1	0	452	3	452	12	452	16	452	11
Alberta	1469	112	44	110	266	158	1028	0	1028	6	3	3	4	0	1028	9	1028	38	1028	81	1028	49
Prairies	2205	112	44	231	387	222	1764	84	1480	9	8	3	5	0	1480	12	1480	50	1480	97	1480	60
Province of British Columbia	1957	9	0	123	261	229	1928	141	371	9	1	2	2	1	371	6	371	26	345	38	250	26
Yukon	60	0	0	0	0	0	60	1	N.A.	N.A.	N.A.	N.A.	N.A.	N.A.	N.A.	N.A.	N.A.	N.A.	N.A.	N.A.	N.A.	N.A.
Northwest Territories	32	4	0	0	4	2	32	0	32	1	0	0	1	0	32	2	32	1	32	0	32	4
Nunavut	37	0	0	9	9	3	37	4	37	3	0	0	0	0	37	2	37	0	37	4	1	0
Territories	129	4	0	9	13	5	129	5	69	4	0	0	1	0	69	4	69	1	69	4	33	4
CANADA	15154	310	57	1851	2347	2141	14019	1217	5314	42	11	9	12	1	5298	86	5285	179	4451	273	4089	117

Specimens from Yukon (YT), Northwest Territories (NT) and Nunavut (NU) are sent to reference laboratories in other provinces and reported results reflect specimens identified as originating from YT, NT or NU.

Results from British Columbia comprise of specimens from the following sites: BC Children's and Women's Hospital, Children's and Women's Hospital Laboratory, Fraser Health Medical Microbiology Laboratory, Island Health, Providence Health Care, Powell River Hospital, St. Paul's Hospital, Vancouver General Hospital, Victoria General Hospital, Victoria Coastal Health, BCCDC Public Health Laboratory, Interior Health Authority sites and Northern Health Authority sites.

Delays in the reporting of data may cause data to change retrospectively.

For British Columbia, only data from subtyped influenza A specimens are included in the weekly number of influenza detections. The sum of A(H1N1)pdm09, A(H3), and A(UnS) positive results may not equal the sum of total Flu A positive results.

Table 2: Respiratory Virus Detections/Isolations for the period August 25, 2019 - February 8, 2020 (Reporting Weeks 201935-202006)

Reporting Laboratory	Flu Tested	A(H1N1)pdm09 Positive	A(H3) Positive	A(UnS) Positive	Total Flu A Positive	Total Flu B Positive	RSV Tested	RSV Positive	PIV Tested	PIV 1 Positive	PIV 2 Positive	PIV 3 Positive	PIV 4 Positive	Other PIV Positive	Adeno Tested	Adeno Positive	hMPV Tested	hMPV Positive	Entero/Rhino Tested	Entero/Rhino Positive	Coron Tested	Coron Positive
Newfoundland	2294	4	24	35	63	103	2294	169	2294	103	1	3	0	0	2294	76	2294	24	2294	282	N.A.	N.A.
Prince Edward Island	607	0	0	40	40	33	607	39	32	1	0	0	0	0	32	0	30	0	32	16	32	0
Nova Scotia	1866	2	1	59	62	75	1909	187	406	13	2	5	0	0	411	8	411	7	411	71	421	6
New Brunswick	6220	27	20	305	352	586	6161	694	1596	45	3	0	11	0	1596	50	1596	4	1596	247	1596	27
Atlantic	10987	33	45	439	517	797	10971	1089	4328	162	5	5	16	0	4333	134	4331	35	4333	616	2049	33
Région Nord-Est	4522	0	0	413	413	698	3854	203	0	0	0	0	0	0	0	0	0	0	N.A.	N.A.	0	0
Québec-Chaudière-Appalaches	8783	0	0	921	921	1117	9003	872	2098	27	4	3	12	0	2137	74	1723	11	N.A.	N.A.	1675	24
Centre-du-Québec	12303	0	0	1834	1834	1786	10184	868	0	0	0	0	0	0	0	0	0	0	N.A.	N.A.	0	0
Montréal-Laval	27456	0	0	2786	2786	2060	26655	1738	13330	137	4	14	12	0	13330	445	12867	113	N.A.	N.A.	13177	199
Ouest du Québec	8497	0	0	1092	1092	1063	7968	748	0	0	0	0	0	0	0	0	0	0	N.A.	N.A.	0	0
Montérégie	6313	0	0	779	779	614	6218	491	0	0	0	0	0	0	0	0	0	0	N.A.	N.A.	0	0
Province of Québec	67874	0	0	7825	7825	7338	63882	4920	15428	164	8	17	24	0	15467	519	14590	124	N.A.	N.A.	14852	223
P.H.O.L. - Ottawa	855	61	50	1	112	50	846	50	821	2	0	0	0	0	821	9	810	18	665	54	653	0
CHEO - Ottawa	5168	1	0	456	457	237	5168	511	634	8	0	4	10	5	634	13	634	8	637	131	625	18
P.H.O.L. - Kingston	579	34	17	1	52	11	564	39	560	1	0	0	0	0	560	15	552	20	391	39	379	0
UHN / Mount Sinai Hospital	7596	9	0	578	587	129	7596	261	415	6	2	10	2	0	0	0	413	10	0	0	N.A.	N.A.
P.H.O.L. - Toronto	9454	1126	105	28	1259	182	9048	289	8969	34	0	3	0	0	8969	92	8800	169	6425	363	6236	0
Sick Kids Hospital - Toronto	1755	97	11	82	190	116	1458	195	1458	25	5	5	27	0	1458	37	1458	32	1458	298	1458	64
Sunnybrook & Women's College HSC	1101	0	0	106	106	16	1101	39	1020	8	0	5	0	0	901	4	1020	11	1020	31	120	0
P.H.O.L. - Sault Ste. Marie	278	12	0	0	12	5	278	9	278	1	0	0	0	0	278	3	276	7	227	11	225	0
P.H.O.L. - Timmins	207	49	1	2	52	5	180	6	181	0	0	0	0	0	181	0	180	10	153	2	150	0
St. Joseph's - London	2417	0	0	197	197	56	2417	258	861	18	3	2	13	0	861	17	861	20	475	84	454	8
P.H.O.L. - London	2567	189	73	3	265	76	2545	179	2530	8	0	0	0	0	2530	30	2503	67	2074	194	2035	0
P.H.O.L. - Orillia	977	59	27	2	88	27	977	65	974	4	0	0	0	0	974	6	973	18	783	59	780	0
P.H.O.L. - Thunder Bay	350	40	5	4	49	29	348	10	348	0	0	1	0	0	348	8	339	14	300	28	290	0
P.H.O.L. - Sudbury	406	22	12	3	37	10	401	21	401	0	0	1	0	0	401	8	392	9	329	15	319	0
P.H.O.L. - Hamilton	2743	219	31	5	255	78	2656	116	2637	10	1	0	0	0	2637	49	2619	61	2042	194	2020	0
P.H.O.L. - Peterborough	690	45	2	0	47	2	687	22	686	3	0	0	0	0	685	6	682	20	431	41	425	0
St. Joseph's - Hamilton	7967	0	0	1255	1255	393	7967	992	7967	105	5	7	0	0	7967	171	7967	121	7967	600	0	0
Province of Ontario	45110	1963	334	2723	5020	1422	44237	3062	30740	233	16	38	52	5	30205	468	30479	615	25377	2144	16169	90
Manitoba	8437	88	70	568	726	688	8161	585	2734	36	5	4	6	0	2734	48	1788	32	2734	425	1788	21
Regina	5880	1	0	696	697	358	5880	234	3075	119	9	4	16	0	3075	56	2998	54	3075	629	3075	60
Saskatoon	4372	0	0	312	312	231	4372	174	4372	97	11	5	5	0	4372	62	4375	16	4372	520	4372	36
Saskatchewan	10252	1	0	1008	1009	589	10252	408	7447	216	20	9	21	0	7447	118	7373	70	7447	1149	7447	96
Alberta	25068	758	1097	876	2731	2718	19696	0	19696	416	42	32	159	0	19696	324	19696	498	19696	2992	19696	529
Prairies	43757	847	1167	2452	4466	3995	38109	993	29877	668	67	45	186	0	29877	490	28857	600	29877	4566	28931	646
Province of British Columbia	21138	183	234	503	1639	1243	20832	1367	6376	174	49	27	42	36	6373	75	6347	334	5910	1203	4944	155
Yukon	1171	4	8	19	31	6	1171	3	N.A.	N.A.	N.A.	N.A.	N.A.	N.A.	N.A.	N.A.	N.A.	N.A.	N.A.	N.A.	N.A.	N.A.
Northwest Territories	549	45	8	1	54	28	540	0	540	11	0	3	8	0	540	16	540	43	540	106	540	41
Nunavut	273	1	0	27	28	7	270	10	270	15	3	0	3	0	270	12	270	2	270	77	58	5
Territories	1993	50	16	47	113	41	1981	13	810	26	3	3	11	0	810	28	810	45	810	183	598	46
CANADA	190859	3076	1796	13989	19580	14836	180012	11444	87559	1427	148	135	331	41	87065	1714	85414	1753	66307	8712	67543	1193

Specimens from YT, NT and NU are sent to reference laboratories in other provinces and reported results reflect specimens identified as originating from YT, NT or NU.

Results from British Columbia comprise of specimens from the following sites: BC Children's and Women's Hospital, Children's and Women's Hospital Laboratory, Fraser Health Medical Microbiology Laboratory, Island Health, Providence Health Care, Powell River Hospital, St. Paul's Hospital, Vancouver General Hospital, Victoria General Hospital, Victoria Coastal Health, BCCDC Public Health Laboratory, Interior Health Authority sites and Northern Health Authority sites.

Delays in the reporting of data may cause data to change retrospectively.

Due to reporting delays, the sum of weekly report totals do not add up to cumulative totals.

For BC, only data from subtyped influenza A specimens are included in the weekly number of influenza detections. The sum of A(H1N1)pdm09, A(H3), and A(UnS) positive results may not equal the sum of total Flu A positive results.

Figure 1: Number positive laboratory tests for other respiratory viruses by report week, Canada, 2019-2020

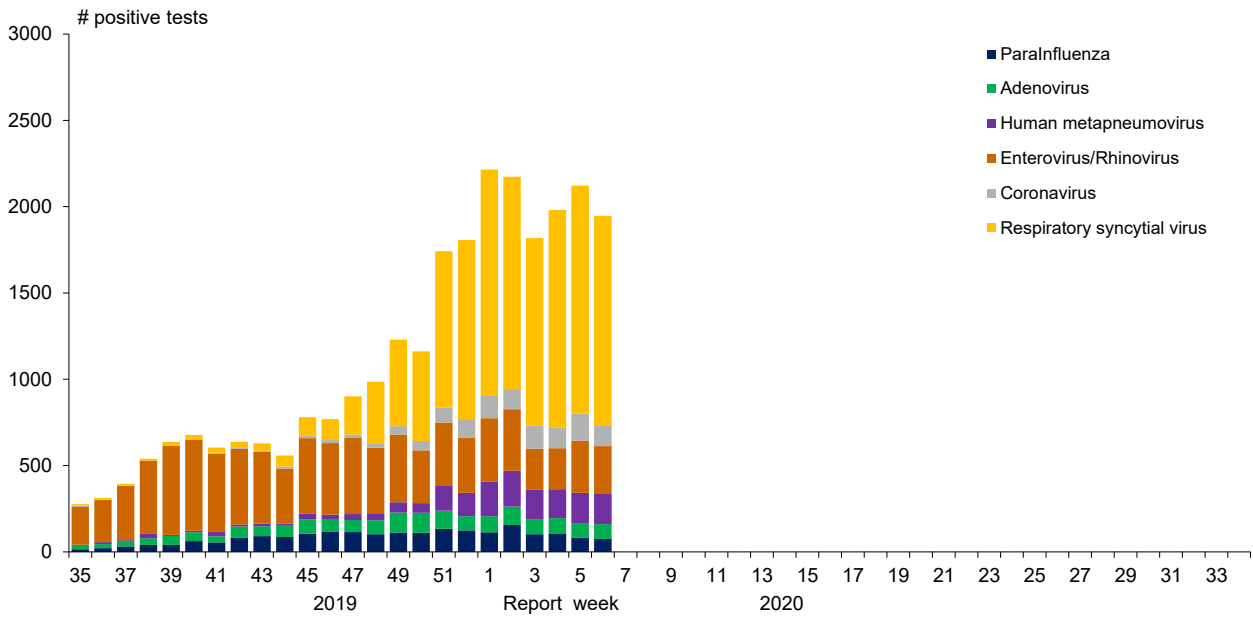


Figure 2: Positive Influenza Tests (%) in Canada by Region by Week of Report

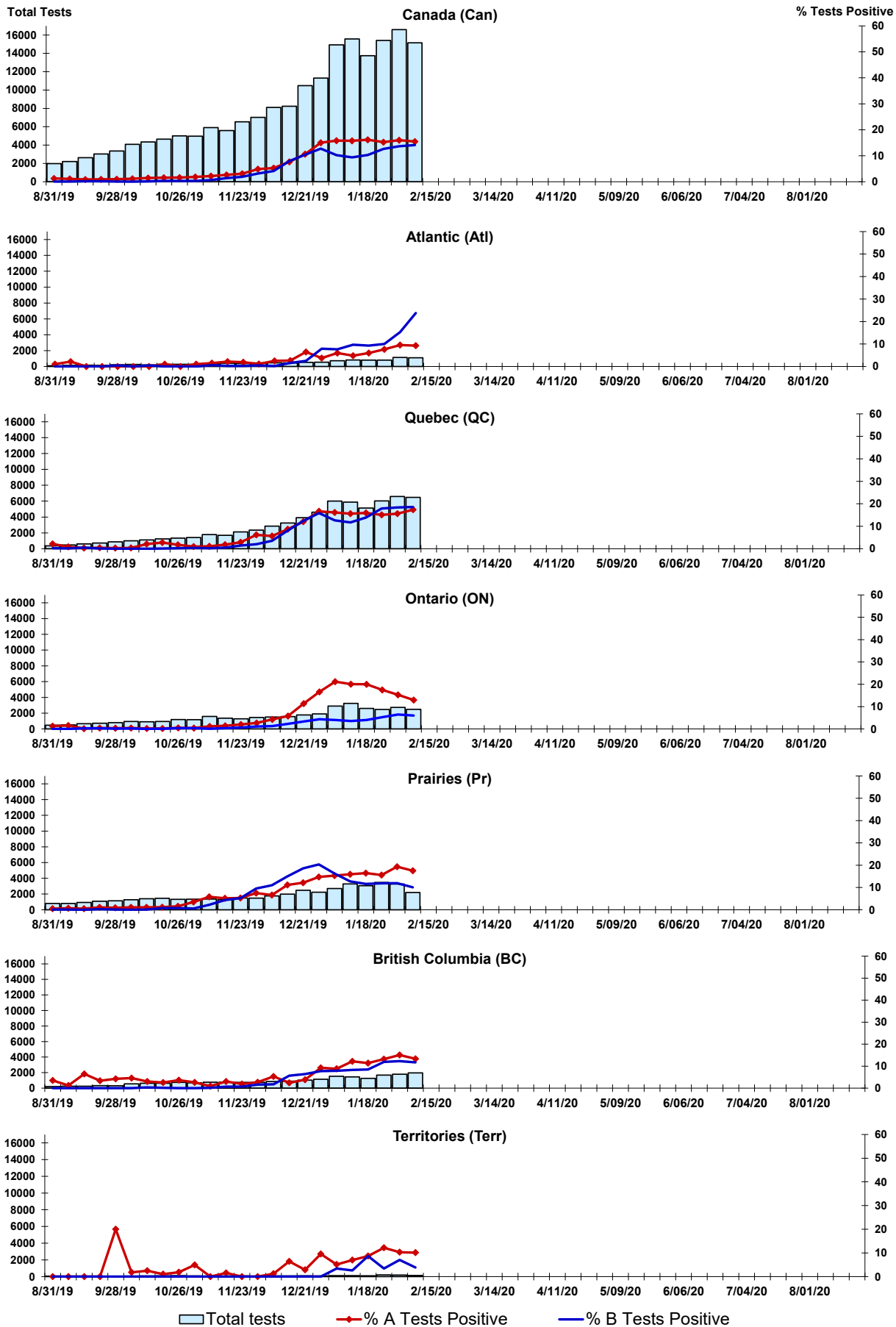


Figure 3: Positive Respiratory syncytial virus (RSV) Tests (%) in Canada by Region by Week of Report

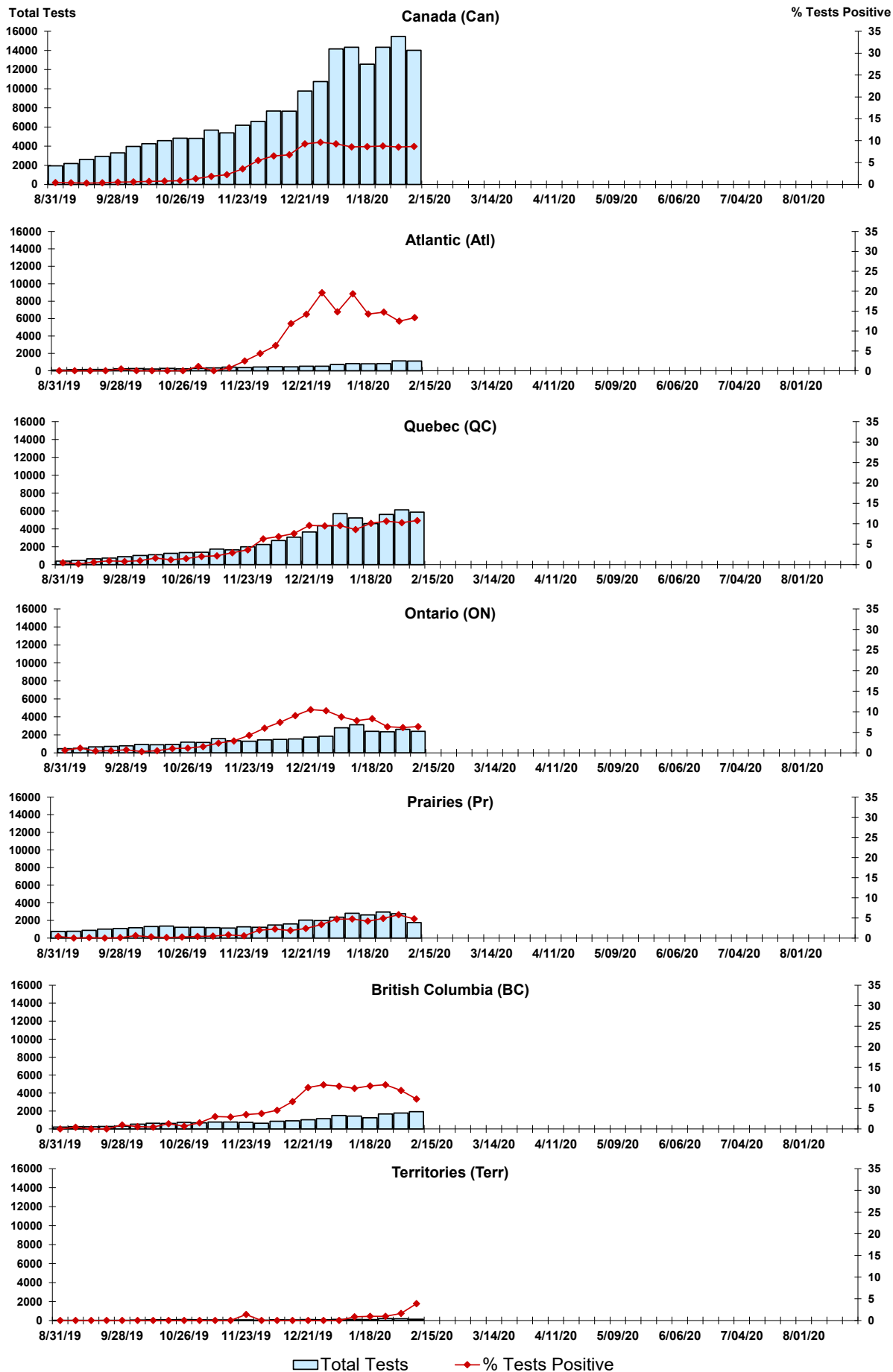


Figure 4: Positive Parainfluenza (PIV) Tests (%) in Canada by Region by Week of Report

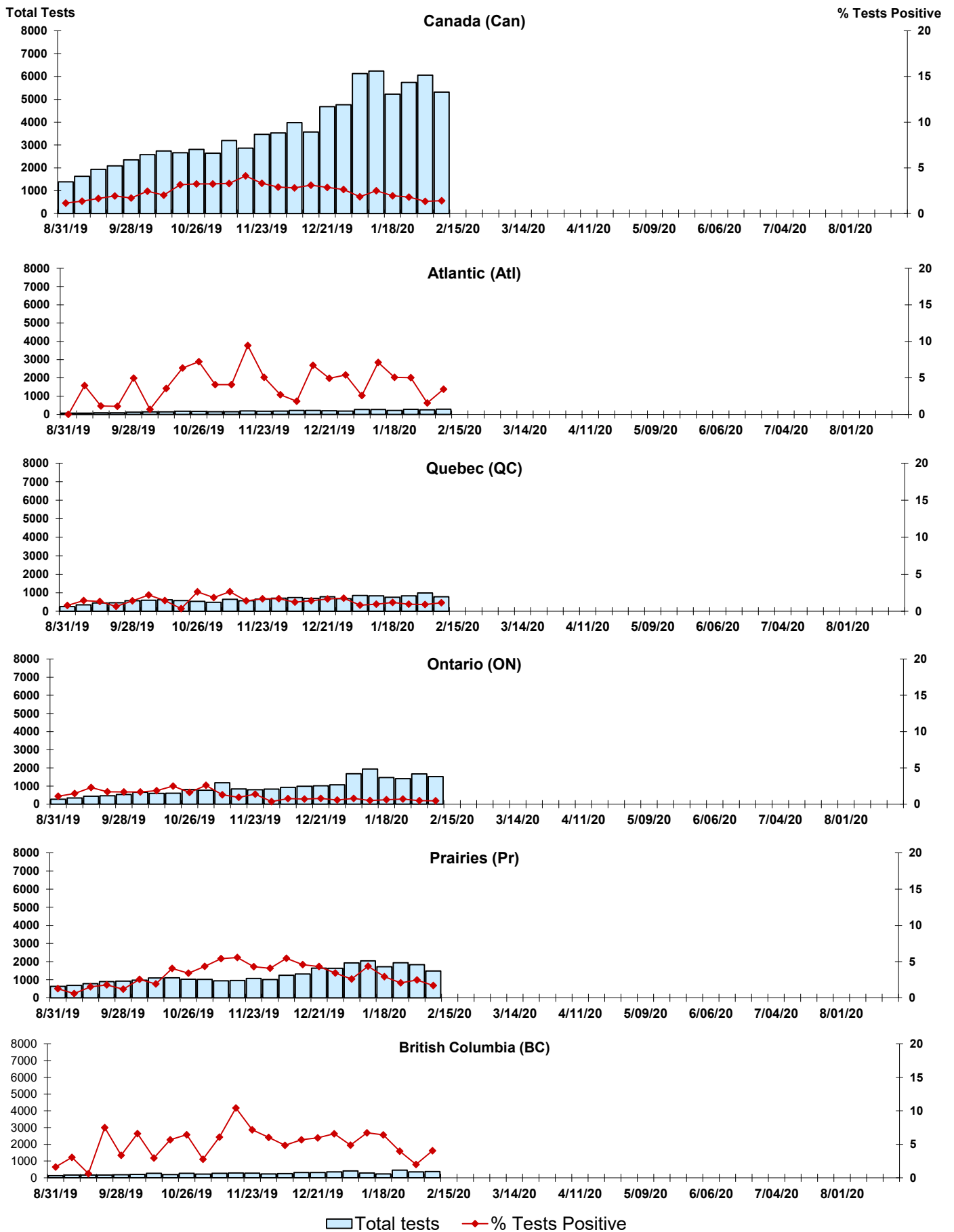


Figure 5: Positive Adenovirus (adeno) Tests (%) in Canada by Region by Week of Report

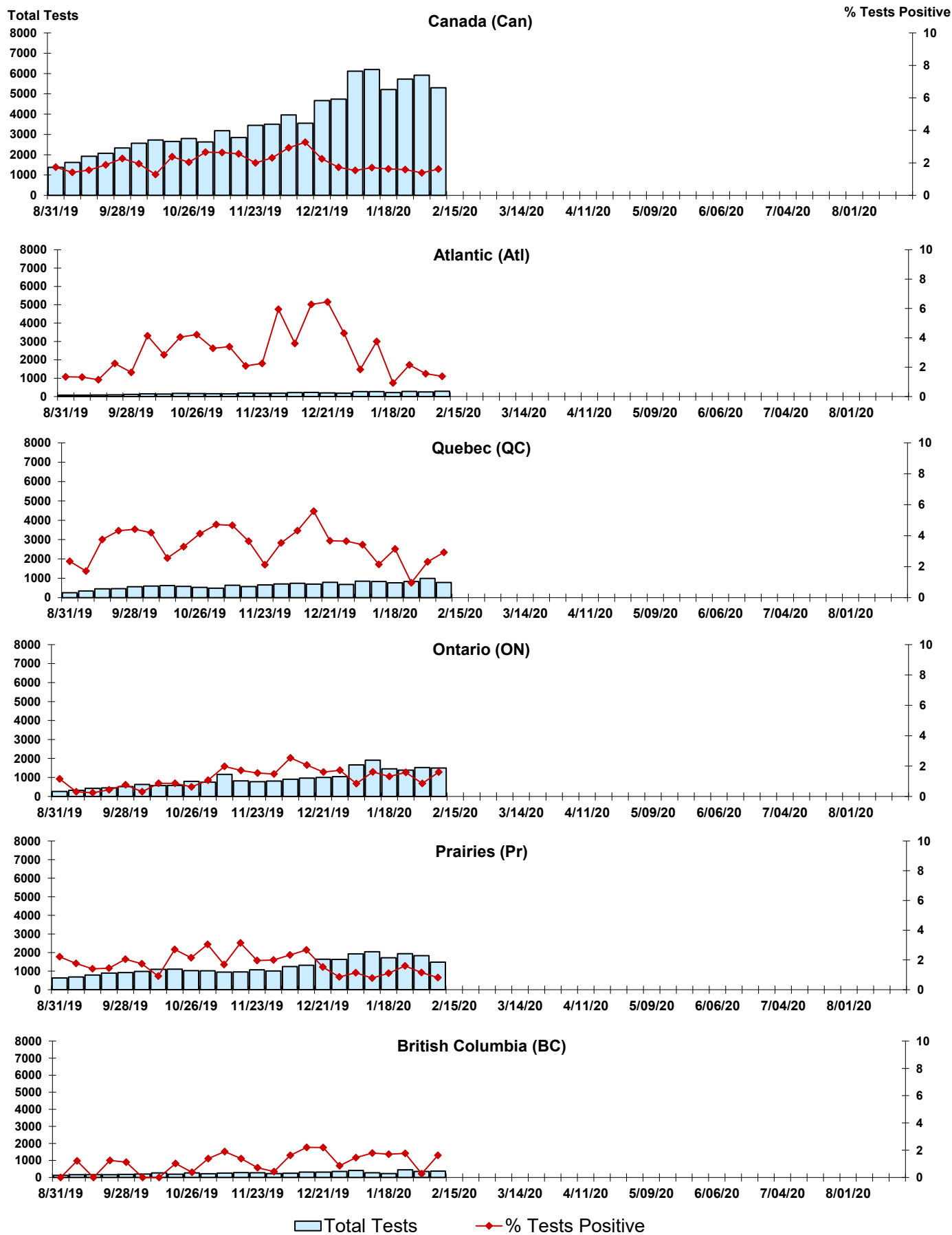


Figure 6: Positive human metapneumovirus (hMPV) Tests (%) in Canada by Region by Week of Report

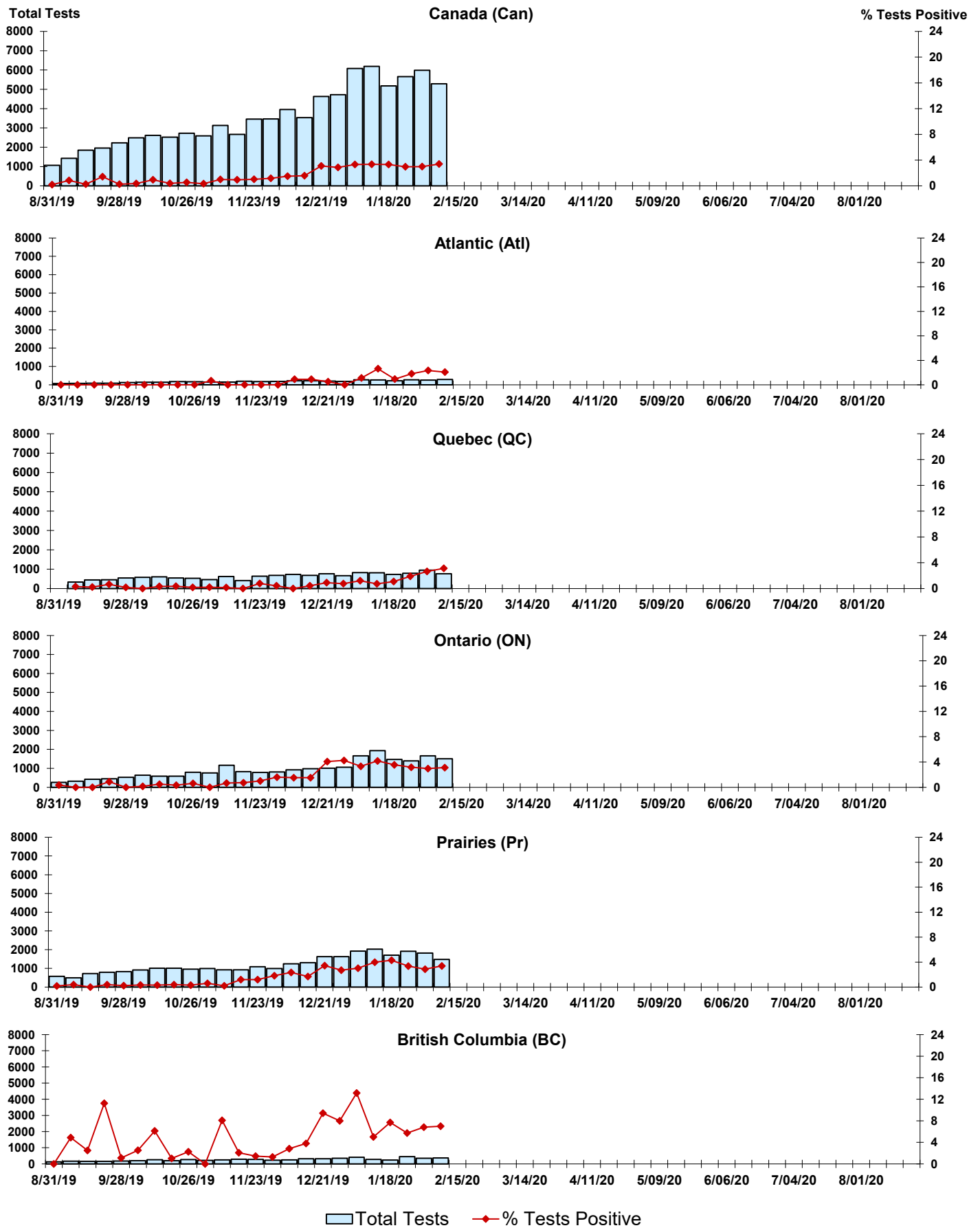


Figure 7: Positive Enterovirus/Rhinovirus (entero/rhino) Tests (%) in Canada by Region by Week of Report

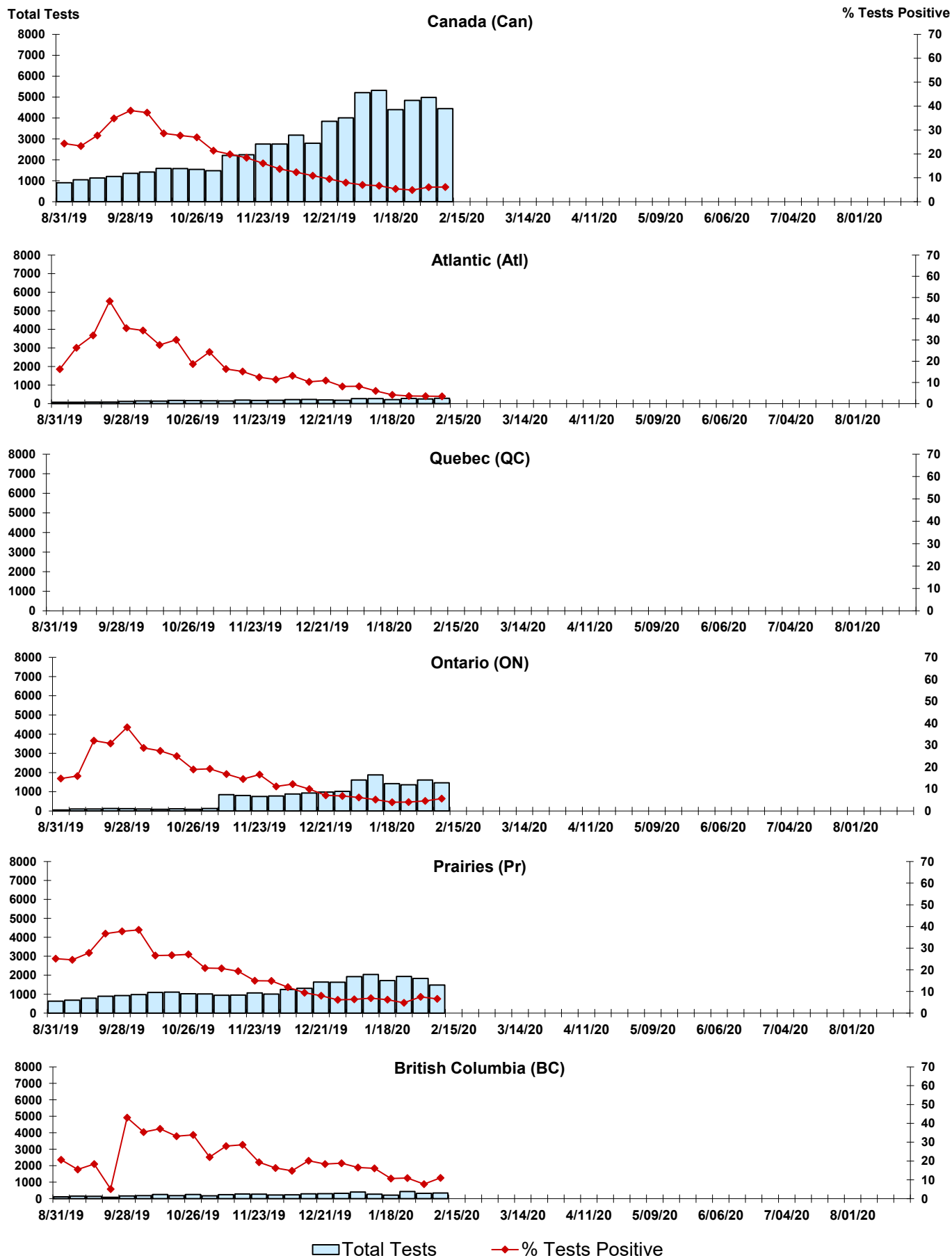
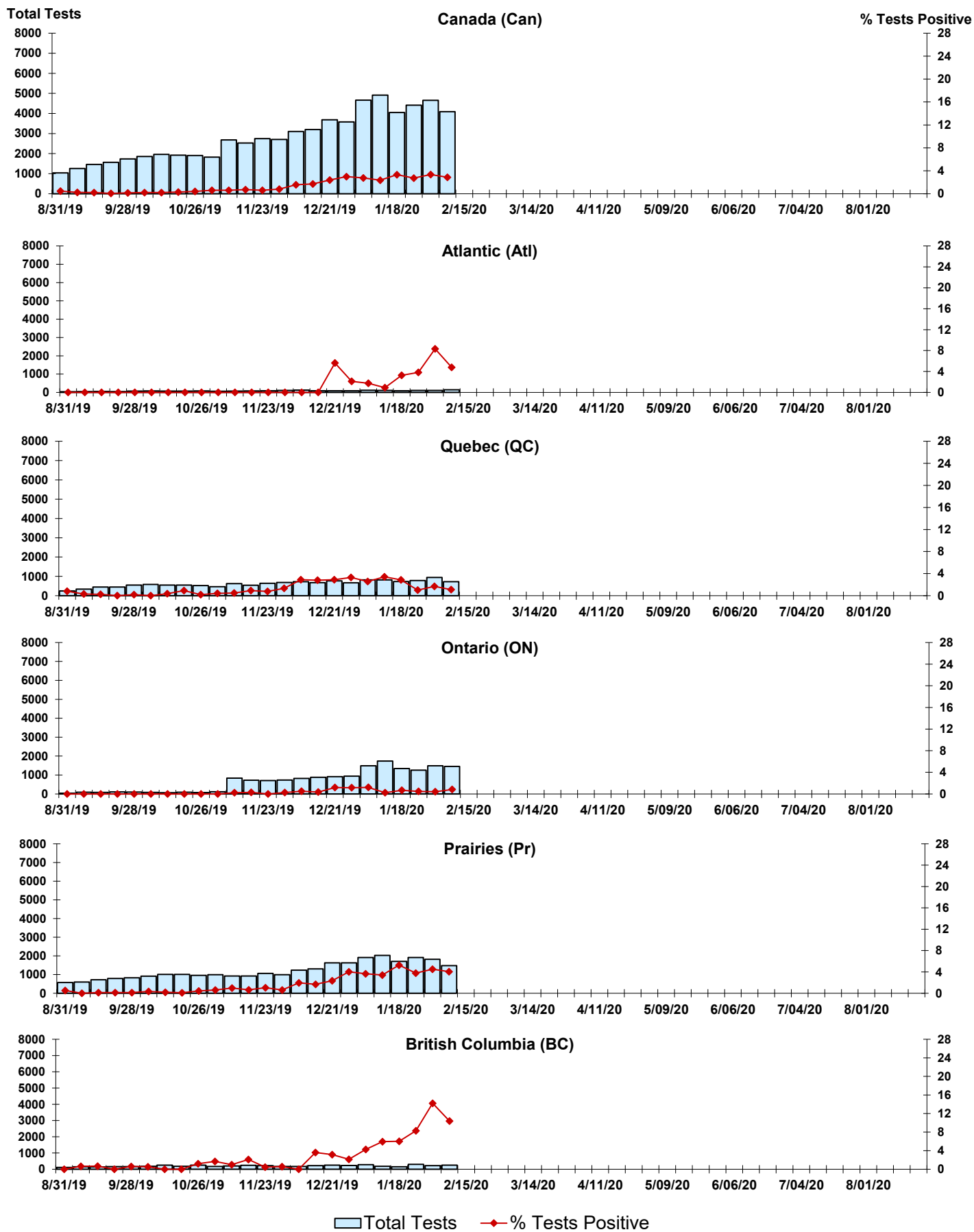


Figure 8: Positive Coronavirus (coron) Tests (%) in Canada by Region by Week of Report



Abbreviations:

A(H1N1)pdm09: Influenza A(H1N1)pdm09

A(H3): Influenza A(H3N2)

A (UnS): Influenza A (Unsubtyped)

Adeno: Adenovirus

CHEO: Children's Hospital of Eastern Ontario

Coron: Coronavirus

Entero: Enterovirus

hMPV: human metapneumovirus

HSC: Health Sciences Centre

N.A.: Not Applicable

P.H.O.L.: Public Health Ontario Laboratory

PIV: Parainfluenza

Rhino: Rhinovirus

RSV: Respiratory syncytial virus

UHN: University Health Network

Notes:

Specimens from Yukon (YT), Northwest Territories (NT) and Nunavut (NU) are sent to reference laboratories in other provinces. Results reported for the Territories reflect the number of specimens that are identified as originating from YT, NT or NU.

Delays in the reporting of data may cause data to change retrospectively.

Due to reporting delays, the sum of weekly report totals do not add up to cumulative totals.