

Respiratory Virus Detections in Canada

Respiratory Virus Report, Week 24 - ending June 15, 2019

The Respiratory Virus Detection Surveillance System collects data from select laboratories across Canada on the number of tests performed and the number of tests positive for influenza and other respiratory viruses. Data are reported on a weekly basis year-round to the Centre for Immunization and Respiratory Infectious Diseases (CIRID), Public Health Agency of Canada. These data are also summarized in the weekly FluWatch report.

Table 1: Respiratory Virus Detections/Isolations for the week ending June 15, 2019 (Reporting Week 201924)

Reporting Laboratory	Flu Tested	A(H1N1)pdm09 Positive	A(H3) Positive	A(UnS) Positive	Total Flu A Positive	Total Flu B Positive	RSV Tested	RSV Positive	PIV Tested	PIV 1 Positive	PIV 2 Positive	PIV 3 Positive	PIV 4 Positive	Other PIV Positive	Adeno Tested	Adeno Positive	hMPV Tested	hMPV Positive	Entero/Rhino Tested	Entero/Rhino Positive	Coron Tested	Coron Positive
Newfoundland	58	0	0	1	1	0	58	0	58	0	0	6	0	0	58	2	58	4	58	6	N.A.	N.A.
Prince Edward Island	3	0	0	0	0	0	3	0	0	0	0	0	0	0	0	0	0	0	0	0	0	0
Nova Scotia	33	0	0	0	0	1	33	2	18	0	0	4	0	0	18	0	18	1	18	1	18	0
New Brunswick	166	0	0	1	1	6	166	2	51	0	0	2	0	0	51	3	51	2	51	13	51	1
Atlantic	260	0	0	2	2	7	260	4	127	0	0	12	0	0	127	5	127	7	127	20	69	1
Région Nord-Est	58	0	0	1	1	4	50	1	0	0	0	0	0	0	0	0	0	0	N.A.	N.A.	0	0
Québec-Chaudière-Appalaches	106	0	0	3	3	1	122	1	107	0	1	4	0	0	107	5	91	1	N.A.	N.A.	91	0
Centre-du-Québec	49	0	0	1	1	3	53	1	0	0	0	0	0	0	0	0	0	0	N.A.	N.A.	0	0
Montréal-Laval	546	0	0	12	12	16	556	5	376	7	8	8	0	0	376	8	366	8	N.A.	N.A.	366	4
Ouest du Québec	69	0	0	1	1	2	69	1	0	0	0	0	0	0	0	0	0	0	N.A.	N.A.	0	0
Montréal	74	0	0	0	0	0	74	0	0	0	0	0	0	0	0	0	0	0	N.A.	N.A.	0	0
Province of Québec	902	0	0	18	18	26	924	9	483	7	9	12	0	0	483	13	457	9	N.A.	N.A.	457	4
Ottawa P.H.L.	5	0	0	0	0	0	5	0	1	0	0	0	0	0	1	0	1	0	0	0	0	0
CHEO - Ottawa	92	0	0	0	0	1	92	6	12	0	1	1	0	0	12	0	12	0	12	0	12	0
Kingston P.H.L.	7	0	0	0	0	0	7	0	5	0	0	0	0	0	5	0	5	0	0	0	0	0
UHN / Mount Sinai Hospital	207	0	0	3	3	0	207	2	19	0	0	1	0	0	0	0	19	0	N.A.	N.A.	N.A.	N.A.
P.H.O.L. - Toronto	243	1	4	0	5	5	243	1	222	1	0	11	0	0	222	0	206	1	16	0	0	0
Sick Kids Hospital - Toronto	53	0	0	0	0	0	53	1	53	0	0	3	0	0	53	1	53	3	53	22	53	0
Sunnybrook & Women's College HSC	40	0	0	0	0	0	40	0	40	1	0	1	1	0	40	0	40	0	40	5	40	0
Sault Ste. Marie P.H.L.	0	0	0	0	0	0	0	0	0	0	0	0	0	0	0	0	0	0	0	0	0	0
Timmins P.H.L.	2	0	0	0	0	0	2	0	2	0	0	0	0	0	2	0	2	0	0	0	0	0
St. Joseph's - London	22	0	0	0	0	0	22	0	22	0	0	0	0	0	22	1	22	1	22	7	20	0
London P.H.L.	37	0	0	0	0	0	37	0	36	0	0	2	0	0	36	0	31	0	5	0	0	0
Orillia P.H.L.	17	0	1	0	1	0	17	0	7	0	0	0	0	0	7	0	6	0	1	0	0	0
Thunder Bay P.H.L.	2	0	0	0	0	0	2	0	2	0	0	0	0	0	2	0	2	0	0	0	0	0
Sudbury P.H.L.	14	0	0	0	0	0	12	0	12	0	0	0	0	0	12	0	9	0	3	0	0	0
Hamilton P.H.L.	43	0	0	0	0	0	43	0	43	2	0	6	0	0	43	0	41	0	2	0	0	0
Peterborough P.H.L.	19	0	0	0	0	0	19	0	8	0	0	1	0	0	8	0	5	0	3	0	0	0
Province of Ontario	803	1	5	3	9	6	801	10	484	4	1	26	1	0	465	2	454	5	176	38	144	0
Manitoba	208	2	1	1	4	1	185	8	112	1	1	9	0	0	112	7	81	2	112	25	81	2
Regina	56	0	0	4	4	2	56	4	56	0	0	2	0	0	56	2	56	0	56	14	56	5
Saskatoon	82	0	0	2	2	0	82	2	82	0	0	2	0	0	82	2	82	2	82	20	82	2
Province of Saskatchewan	138	0	0	6	6	2	138	6	138	0	0	4	0	0	138	4	138	2	138	34	138	7
Province of Alberta	470	1	23	5	29	6	419	0	419	2	1	32	1	0	419	5	419	17	419	76	419	3
Prairies	816	3	24	12	39	9	742	14	669	3	2	45	1	0	669	16	638	21	669	135	638	12
British Columbia	299	1	4	6	11	0	299	0	218	0	0	16	5	0	218	4	218	0	169	43	169	2
Yukon	8	0	7	0	7	0	8	0	N.A.	N.A.	N.A.	N.A.	N.A.	N.A.	N.A.	N.A.	N.A.	N.A.	N.A.	N.A.	N.A.	N.A.
Northwest Territories	4	0	0	0	0	0	4	0	4	0	0	0	0	0	4	0	4	2	4	2	4	0
Nunavut	2	0	0	0	0	0	2	0	2	0	0	0	0	0	2	0	2	0	2	2	2	0
Territories	14	0	7	0	7	0	14	0	6	0	0	0	0	0	6	0	6	2	6	4	6	0
CANADA	3094	5	40	41	86	48	3040	37	1987	14	12	111	7	0	1968	40	1900	44	1147	240	1483	19

Specimens from Yukon (YT), Northwest Territories (NT) and Nunavut (NU) are sent to reference laboratories in other provinces and reported results reflect specimens identified as originating from YT, NT or NU.

Results from British Columbia comprise of specimens from the following sites: BC Children's and Women's Hospital, Powell River Hospital, St. Paul's Hospital, Vancouver General Hospital, Victoria General Hospital, Interior Health Authority sites and Northern Health Authority sites.

Delays in the reporting of data may cause data to change retrospectively.

Table 2: Respiratory Virus Detections/Isolations for the period August 26, 2018 - June 15, 2019 (Reporting Weeks 201835-201924)

Reporting Laboratory	Flu Tested	A(H1N1)pdm09 Positive	A(H3) Positive	A(UnS) Positive	Total Flu A Positive	Total Flu B Positive	RSV Tested	RSV Positive	PIV Tested	PIV 1 Positive	PIV 2 Positive	PIV 3 Positive	PIV 4 Positive	Other PIV Positive	Adeno Tested	Adeno Positive	hMPV Tested	hMPV Positive	Entero/Rhino Tested	Entero/Rhino Positive	Coron Tested	Coron Positive
Newfoundland	5206	1	0	1034	1035	4	5206	486	5206	10	58	185	0	0	5206	45	5206	224	5206	338	N.A.	N.A.
Prince Edward Island	1261	221	56	1	278	2	1259	140	86	1	0	2	3	0	81	5	81	3	81	22	81	3
Nova Scotia	4097	0	0	786	786	22	4108	408	557	0	4	34	3	0	557	1	557	9	557	68	557	11
New Brunswick	14628	246	39	2596	2881	361	14627	1232	3751	0	18	129	43	0	3751	131	3751	150	3751	426	3751	177
Atlantic	25192	468	95	4417	4980	389	25200	2266	9600	11	80	350	49	0	9595	182	9595	386	9595	854	4389	191
Région Nord-Est	9493	0	0	1585	1585	67	7474	703	0	0	0	0	0	0	0	0	0	0	N.A.	N.A.	0	0
Québec-Chaudière-Appalaches	16378	0	0	3142	3142	80	16674	1583	3356	9	33	92	9	0	3461	117	2825	49	N.A.	N.A.	2651	31
Centre-du-Québec	18771	0	0	3647	3647	221	15117	1589	0	0	0	0	0	0	36	0	0	0	N.A.	N.A.	0	0
Montréal-Laval	42428	0	0	4670	4670	353	41195	3002	22334	108	161	459	40	0	22334	630	21902	496	N.A.	N.A.	21851	729
Ouest du Québec	13127	0	0	2699	2699	178	12032	1406	0	0	0	0	0	0	0	0	0	0	N.A.	N.A.	0	0
Montérégie	9241	0	0	1392	1393	51	8829	679	0	0	0	0	0	0	0	0	0	0	N.A.	N.A.	0	0
Province of Québec	109438	0	0	17135	17136	950	101321	8962	25690	117	194	551	49	0	25831	747	24727	545	N.A.	N.A.	24502	760
Ottawa P.H.L.	971	91	70	22	183	4	966	88	561	0	3	8	0	0	561	1	532	9	35	0	0	0
CHEO - Ottawa	8416	0	0	860	860	43	8415	936	924	5	11	27	6	0	925	28	924	18	917	219	896	39
Kingston P.H.L.	1001	67	71	12	150	16	1001	63	715	0	4	18	0	0	715	1	678	7	103	0	0	0
UHN / Mount Sinai Hospital	12398	6	15	751	772	55	12398	485	684	1	9	15	3	0	0	0	632	8	N.A.	N.A.	N.A.	N.A.
P.H.O.L. - Toronto	14675	893	713	98	1704	85	14238	540	11713	24	61	156	0	0	11714	59	11357	184	563	0	0	0
Sick Kids Hospital - Toronto	2852	115	46	122	283	39	2436	225	2436	24	37	67	26	0	2436	85	2436	105	2436	589	2436	135
Sunnybrook & Women's College HSC	2779	73	100	11	184	6	2779	62	2779	13	5	32	2	0	2779	1	2779	87	2779	221	2779	100
Sault Ste. Marie P.H.L.	439	47	40	3	90	0	371	18	341	0	3	2	0	0	341	0	335	5	10	0	0	0
Timmins P.H.L.	402	60	10	1	71	0	331	12	329	0	7	6	0	0	329	0	321	1	21	0	0	0
St. Joseph's - London	4712	3	0	530	533	6	4584	361	1628	5	6	42	15	0	1628	34	1628	54	1178	183	923	21
London P.H.L.	4214	320	205	60	585	18	4176	333	2974	6	23	51	0	0	2974	20	2853	42	221	0	0	0
Orillia P.H.L.	1292	67	78	23	168	2	1292	128	931	2	2	24	0	0	931	1	917	18	39	0	0	0
Thunder Bay P.H.L.	454	32	45	8	85	0	360	18	347	1	1	15	0	0	346	4	331	9	26	0	0	0
Sudbury P.H.L.	938	48	22	0	70	0	874	33	847	5	4	9	0	0	847	3	794	13	84	0	0	0
Hamilton P.H.L.	4084	236	224	33	493	14	3985	136	3235	14	15	77	0	0	3235	25	3179	52	167	0	0	0
Peterborough P.H.L.	1177	44	78	22	144	3	1173	49	920	3	4	8	0	0	920	0	905	12	18	0	0	0
Province of Ontario	60804	2102	1717	2556	6375	291	59379	3487	31364	103	195	557	52	0	30681	262	30601	624	8846	1228	7290	305
Manitoba	11086	333	131	727	1191	71	10514	631	4853	7	20	151	12	0	4853	53	3044	87	4853	589	3078	132
Regina	8615	1433	150	167	1750	83	8615	554	10548	4	64	226	35	0	8615	141	8615	176	8615	1529	8615	307
Saskatoon	6638	0	0	887	887	47	6638	444	6638	3	7	49	14	48	6638	60	6638	149	6638	485	6638	102
Province of Saskatchewan	15253	1433	150	1054	2637	130	15253	998	17186	7	71	275	49	48	15253	201	15253	325	15253	2014	15253	409
Province of Alberta	38526	3642	1341	2217	7200	352	31467	0	31467	65	239	1028	249	0	31467	463	31467	947	31467	4642	31467	1366
Prairies	64865	5408	1622	3998	11028	553	57234	1629	53506	79	330	1454	310	48	51573	717	49764	1359	51573	7245	49798	1907
British Columbia	26620	3159	1577	1606	6342	237	26583	1571	11584	18	72	456	109	0	11584	159	11584	79	8851	1763	8851	494
Yukon	389	65	23	37	125	0	389	18	N.A.	N.A.	N.A.	N.A.	N.A.	N.A.	N.A.	N.A.	N.A.	N.A.	N.A.	N.A.	N.A.	N.A.
Northwest Territories	793	175	6	0	181	2	788	0	788	5	0	31	4	0	788	26	788	11	788	136	788	47
Nunavut	119	20	0	0	20	0	119	0	119	4	0	4	0	0	119	18	118	0	119	33	118	9
Territories	1301	260	29	37	326	2	1296	18	907	9	0	35	4	0	907	44	906	11	907	169	906	56
CANADA	288220	11397	5040	29749	46187	2422	271013	17933	132651	337	871	3403	573	48	130171	2111	127177	3004	79772	11259	95736	3713

Specimens from YT, NT and NU are sent to reference laboratories in other provinces and reported results reflect specimens identified as originating from YT, NT or NU.

Results from British Columbia comprise of specimens from the following sites: BC Children's and Women's Hospital, Powell River Hospital, St. Paul's Hospital, Vancouver General Hospital, Victoria General Hospital, Interior Health Authority sites and Northern Health Authority sites.

Delays in the reporting of data may cause data to change retrospectively.

Due to reporting delays, the sum of weekly report totals do not add up to cumulative totals.

Figure 1: Number positive laboratory tests for other respiratory viruses by report week, Canada, 2018-19

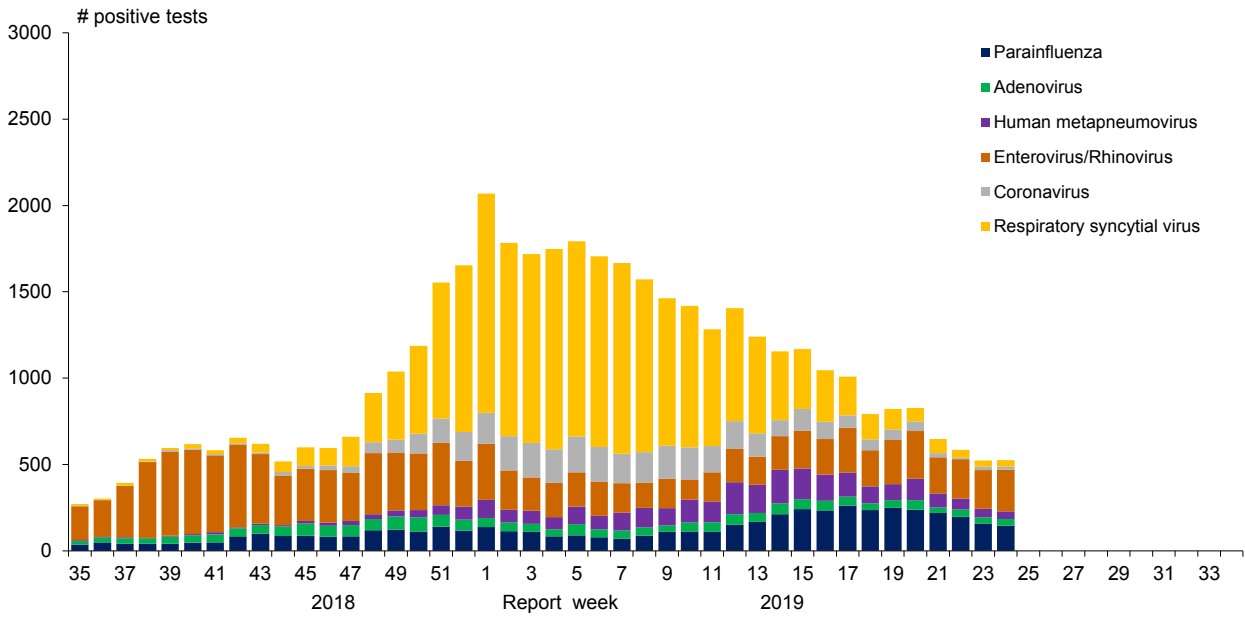


Figure 2: Positive Influenza Tests (%) in Canada by Region by Week of Report

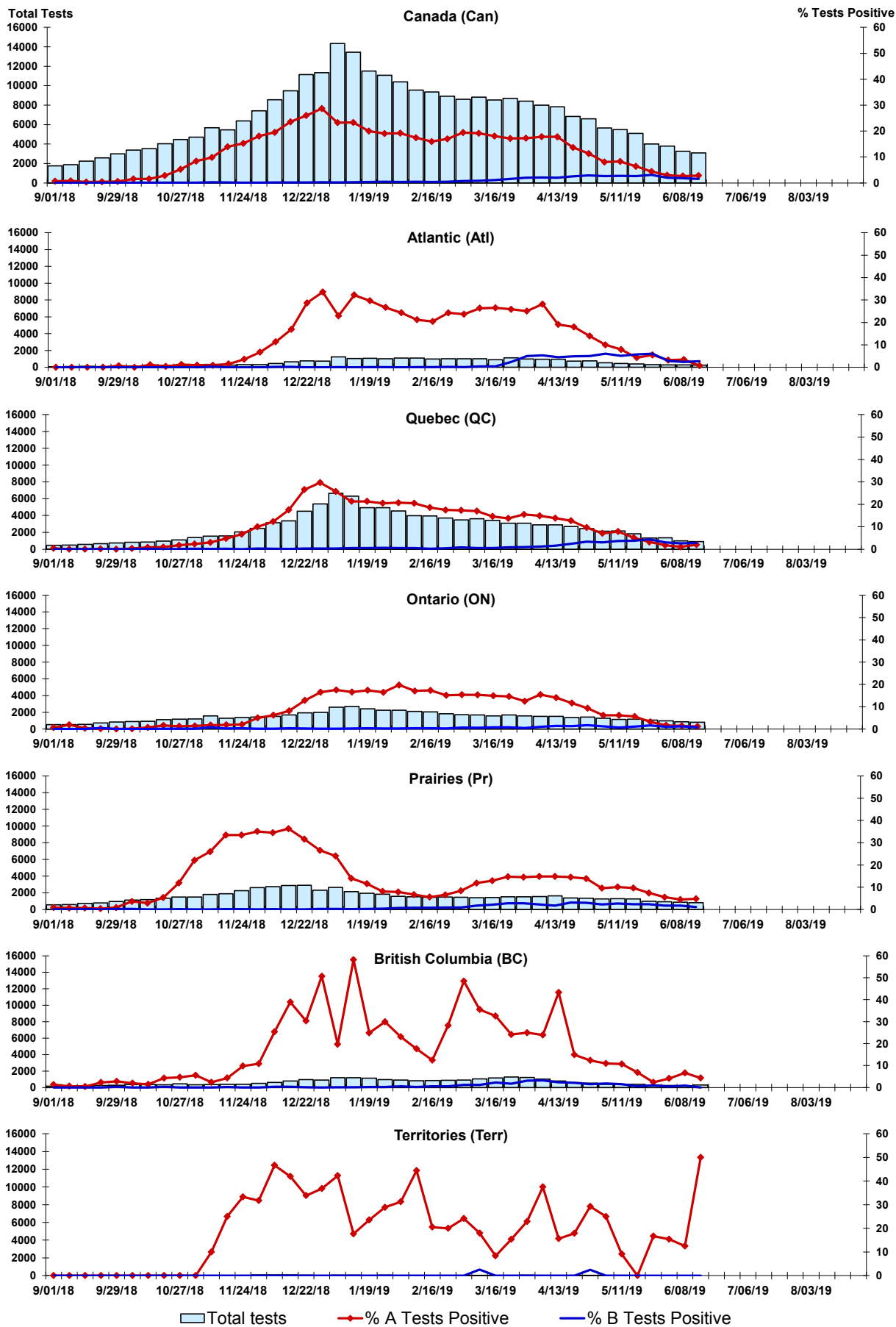


Figure 3: Positive Respiratory syncytial virus (RSV) Tests (%) in Canada by Region by Week of Report

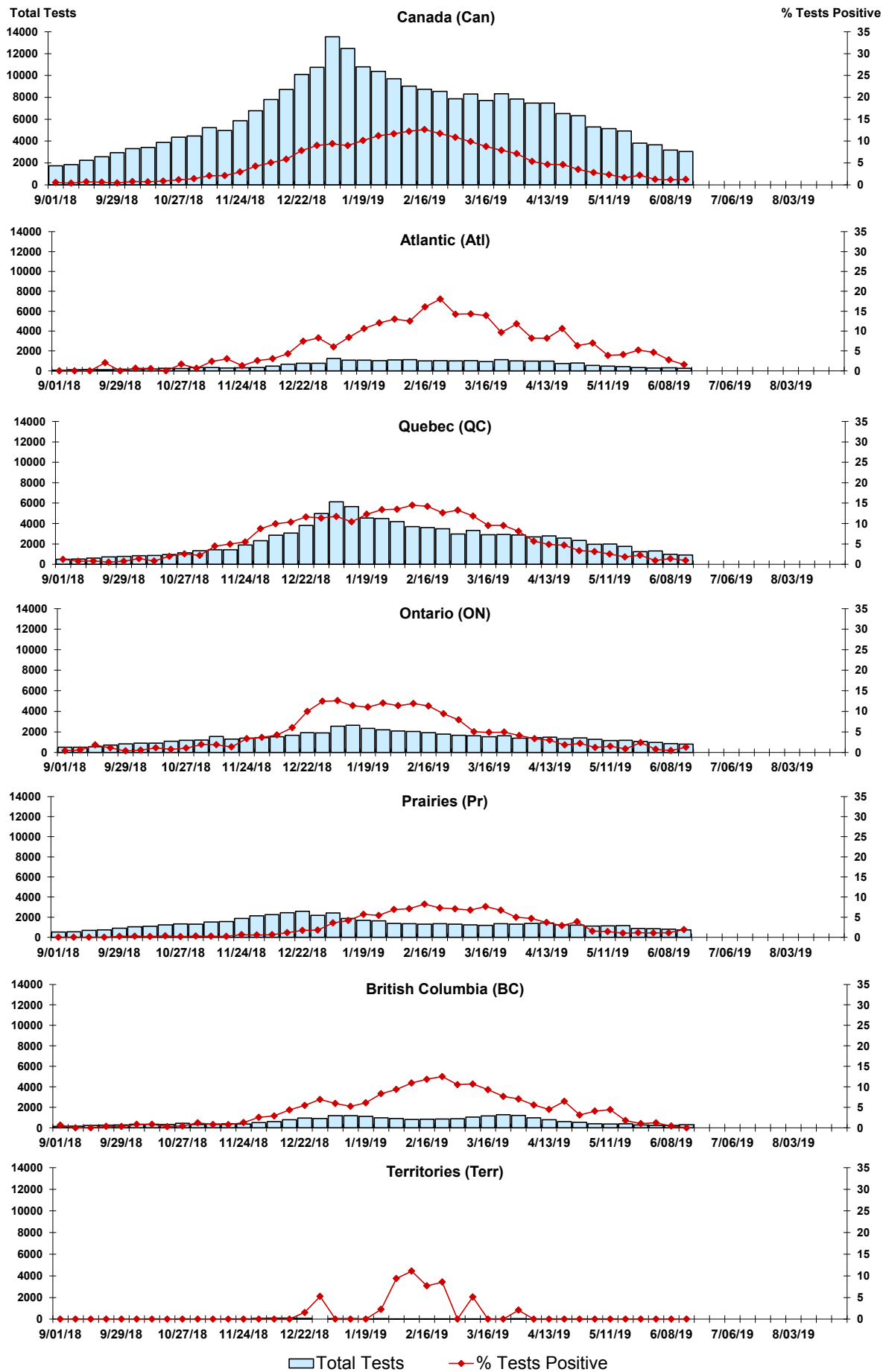


Figure 4: Positive Parainfluenza (PIV) Tests (%) in Canada by Region by Week of Report

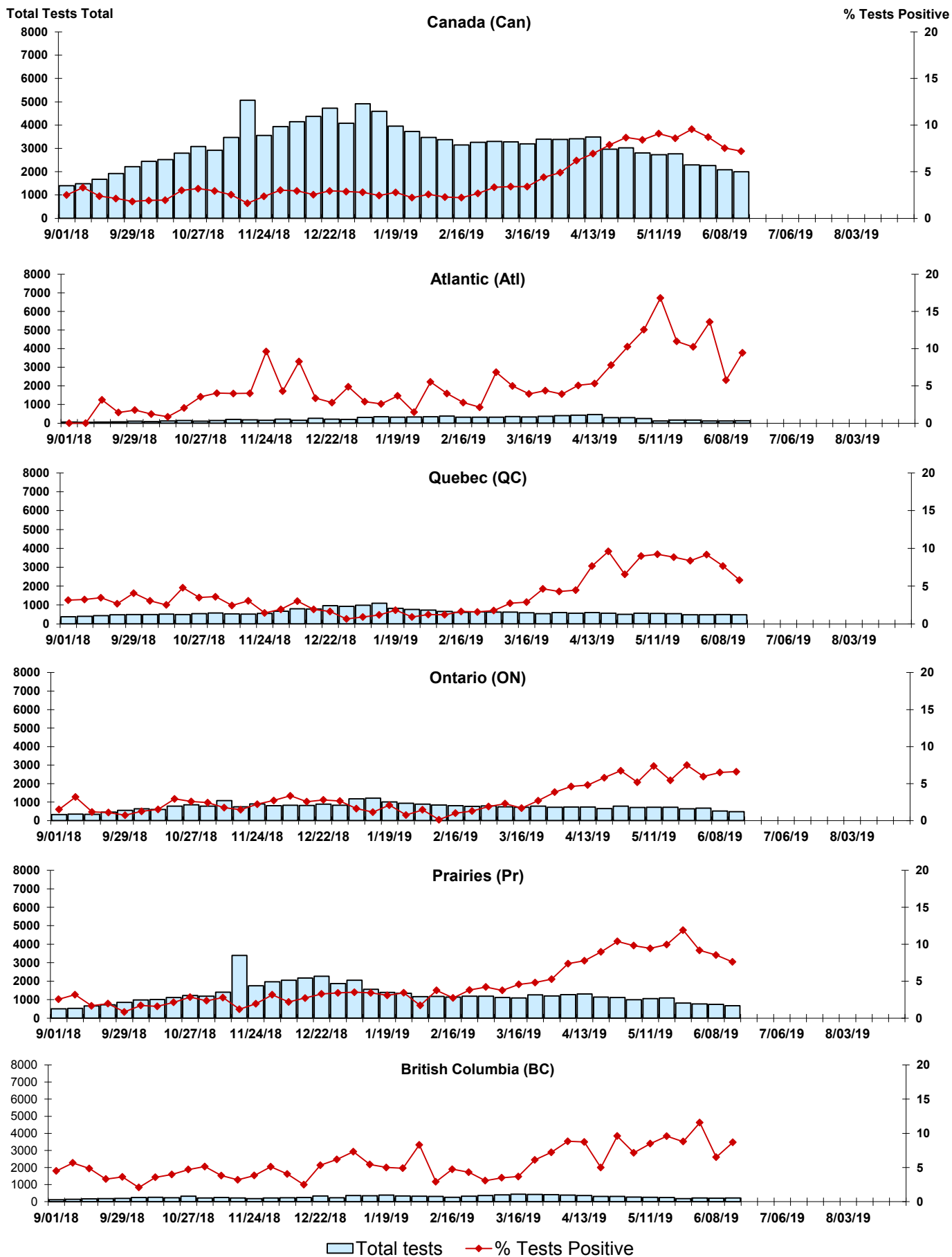


Figure 5: Positive Adenovirus (adeno) Tests (%) in Canada by Region by Week of Report

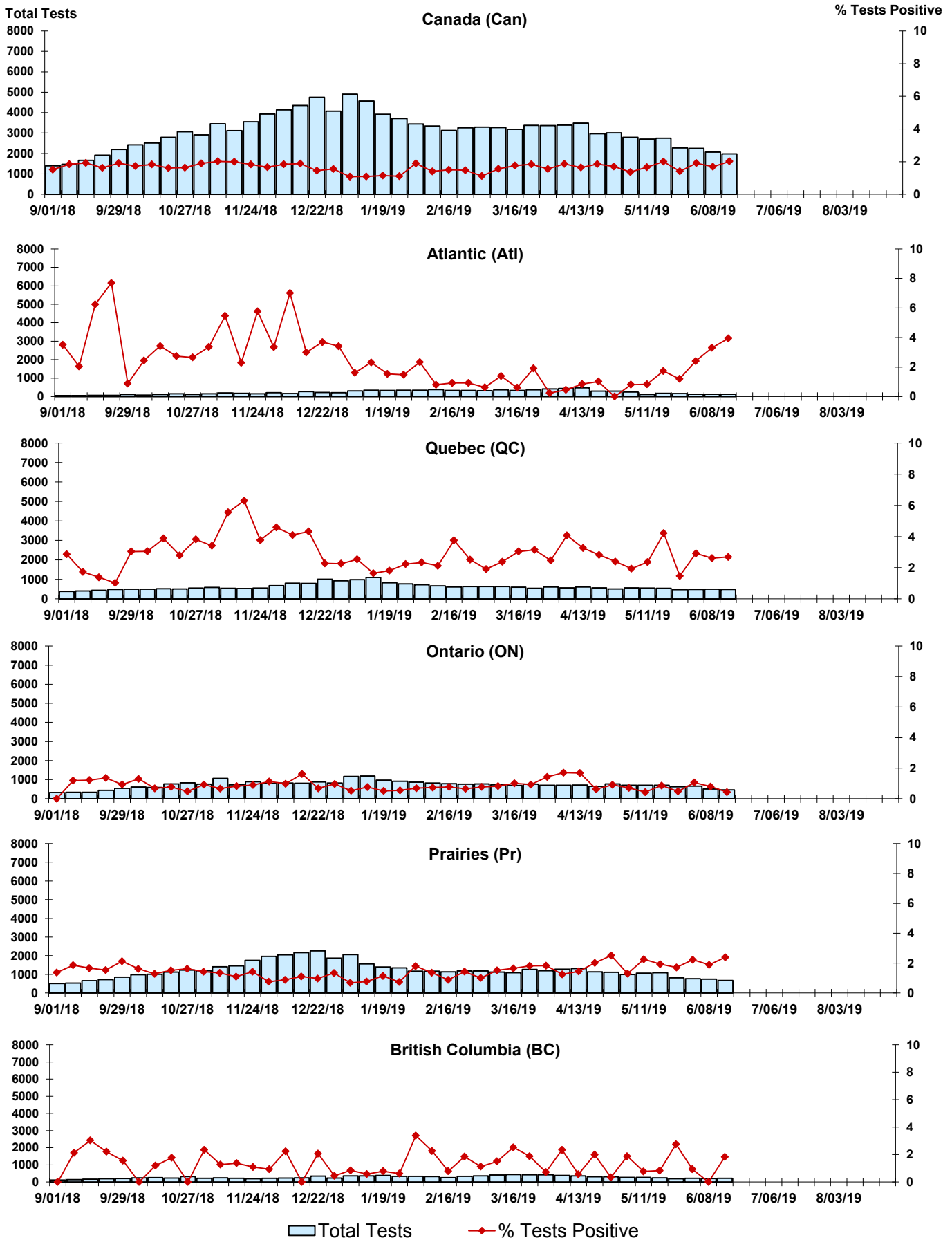


Figure 6: Positive human metapneumovirus (hMPV) Tests (%) in Canada by Region by Week of Report

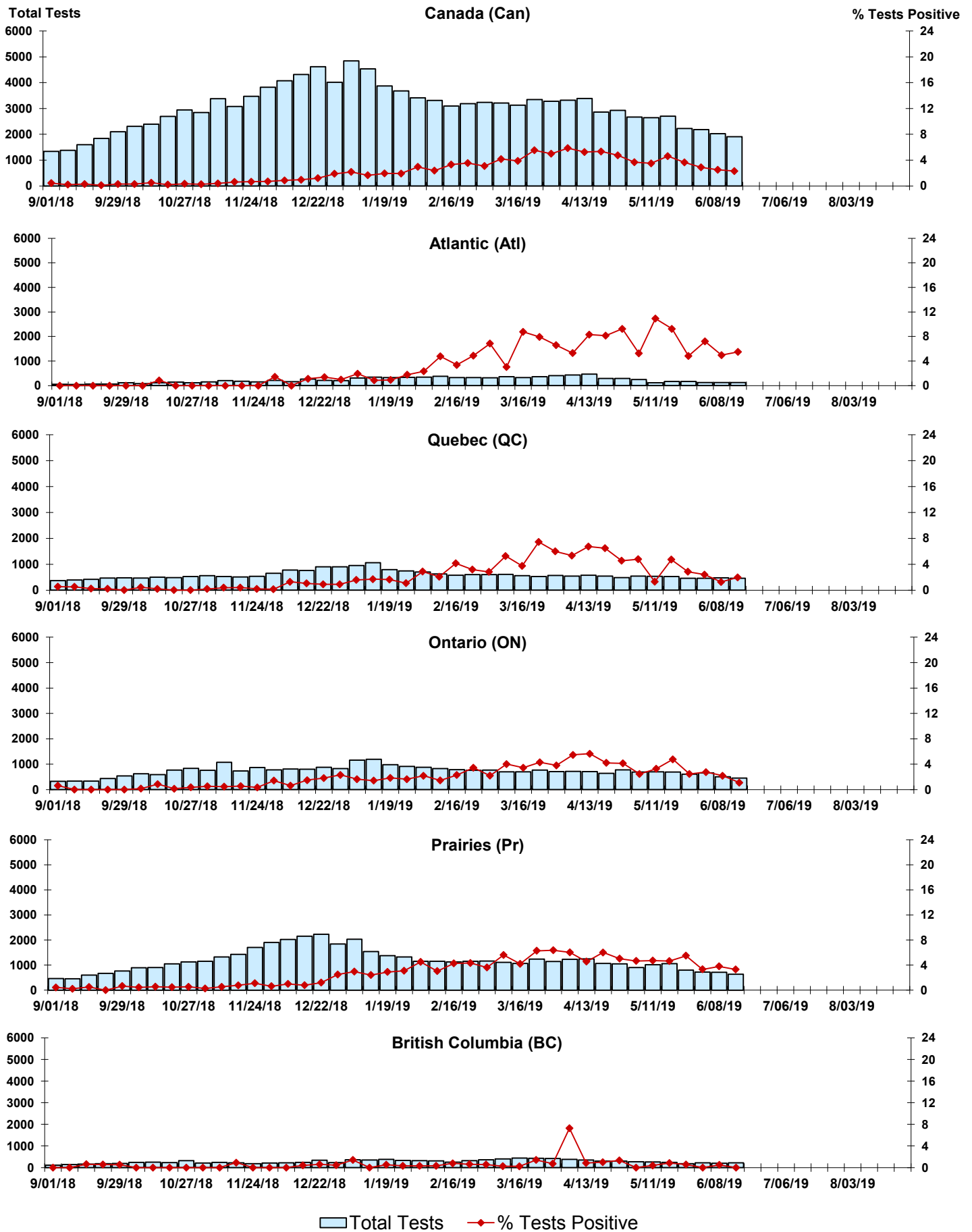


Figure 7: Positive Enterovirus/Rhinovirus (entero/rhino) Tests (%) in Canada by Region by Week of Report

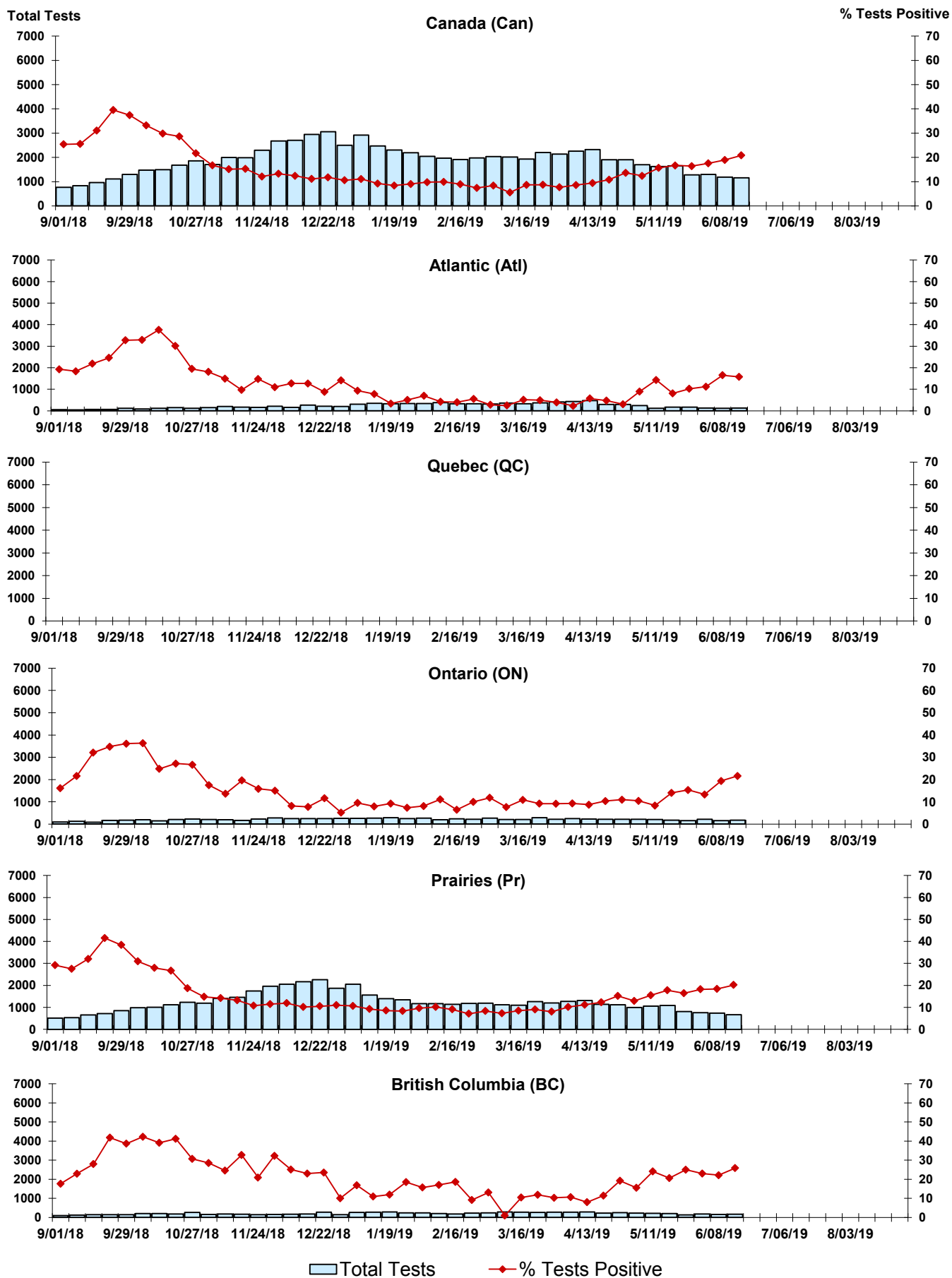
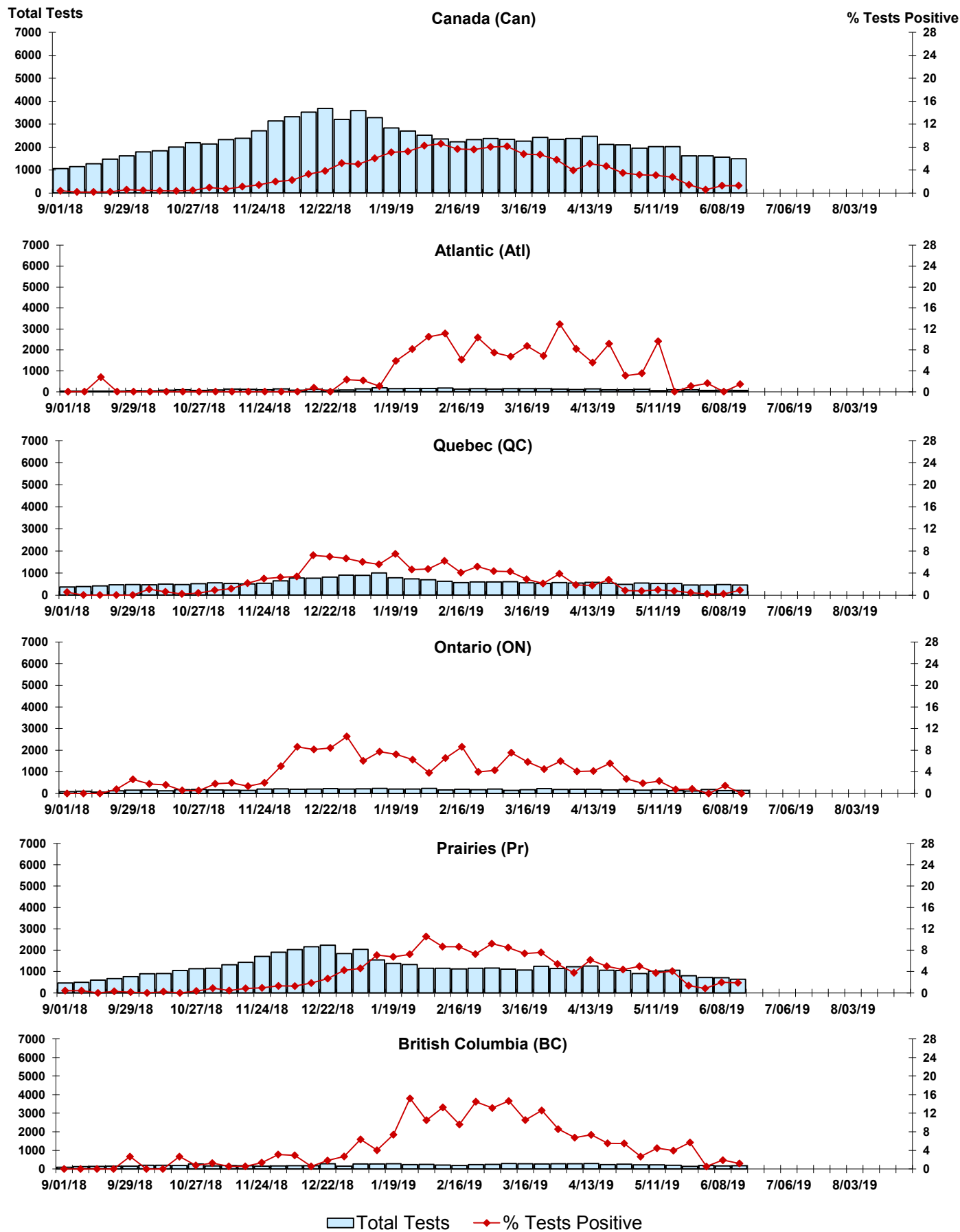


Figure 8: Positive Coronavirus (coron) Tests (%) in Canada by Region by Week of Report



Abbreviations:

A(H1N1)pdm09: Influenza A(H1N1)pdm09

A(H3): Influenza A(H3N2)

A (UnS): Influenza A (Unsubtyped)

Adeno: Adenovirus

CHEO: Children's Hospital of Eastern Ontario

Coron: Coronavirus

Entero: Enterovirus

hMPV: human metapneumovirus

HSC: Health Sciences Centre

N.A.: Not Applicable

P.H.L.: Public Health Laboratory

P.H.O.L.: Public Health Ontario Laboratory

PIV: Parainfluenza

Rhino: Rhinovirus

RSV: Respiratory syncytial virus

UHN: University Health Network

Notes:

Specimens from Yukon (YT), Northwest Territories (NT) and Nunavut (NU) are sent to reference laboratories in other provinces. Results reported for the Territories reflect the number of specimens that are identified as originating from YT, NT or NU.

Delays in the reporting of data may cause data to change retrospectively.

Due to reporting delays, the sum of weekly report totals do not add up to cumulative totals.