

Respiratory Virus Detections in Canada

Respiratory Virus Report, Week 05 - ending February 3, 2018

The Respiratory Virus Detection Surveillance System collects data from select laboratories across Canada on the number of tests performed and the number of tests positive for influenza and other respiratory viruses. Data are reported on a weekly basis year-round to the Centre for Immunization and Respiratory Infectious Diseases (CIRID), Public Health Agency of Canada. These data are also summarized in the weekly FluWatch report.

Table 1: Respiratory Virus Detections/Isolations for the week ending February 3, 2018 (Reporting Week 201805)

Reporting Laboratory	Flu Tested	A(H1N1)pdm09 Positive	A(H3) Positive	A(UnS) Positive	Total Flu A Positive	Total Flu B Positive	RSV Tested	RSV Positive	PIV Tested	PIV 1 Positive	PIV 2 Positive	PIV 3 Positive	PIV 4 Positive	Other PIV Positive	Adeno Tested	Adeno Positive	hMPV Tested	hMPV Positive	Entero/Rhino Tested	Entero/Rhino Positive	Coron Tested	Coron Positive
Newfoundland	191	0	0	30	30	24	191	11	191	1	2	2	0	0	191	1	191	17	191	0	N.A.	N.A.
Prince Edward Island	72	0	6	0	6	14	72	13	4	0	0	0	0	0	4	1	4	0	4	0	4	0
Nova Scotia	203	0	0	42	42	12	204	37	18	0	0	0	0	0	18	0	18	1	18	0	18	1
New Brunswick	0	0	0	0	0	0	0	0	0	0	0	0	0	0	0	0	0	0	0	0	0	0
Atlantic	466	0	6	72	78	50	467	61	213	1	2	2	0	0	213	2	213	18	213	0	22	1
Région Nord-Est	918	0	0	181	181	126	742	47	0	0	0	0	0	0	0	0	0	0	N.A.	N.A.	0	0
Québec-Chaudière-Appalaches	840	0	0	202	202	147	800	103	107	0	0	0	0	0	105	2	88	0	N.A.	N.A.	87	2
Centre-du-Québec	1258	0	0	239	239	247	985	119	0	0	0	0	0	0	0	0	0	0	N.A.	N.A.	0	0
Montréal-Laval	2183	0	0	348	348	317	2066	116	860	7	0	0	0	0	865	18	840	20	N.A.	N.A.	742	52
Ouest du Québec	1043	0	0	198	198	172	758	70	0	0	0	0	0	0	0	0	0	0	N.A.	N.A.	0	0
Montérégie	542	0	0	99	99	74	400	40	0	0	0	0	0	0	0	0	0	0	N.A.	N.A.	0	0
Province of Québec	6784	0	0	1267	1267	1083	5751	495	967	7	0	0	0	0	970	20	928	20	N.A.	N.A.	829	54
Ottawa P.H.L.	42	0	3	2	5	8	4	1	4	0	0	0	0	0	4	0	3	0	1	0	0	0
CHEO - Ottawa	327	0	0	51	51	31	327	61	27	0	0	0	1	0	27	1	27	2	27	3	27	1
Kingston P.H.L.	42	1	5	1	7	8	20	1	20	0	0	1	0	0	20	0	17	0	5	0	0	0
UHN / Mount Sinai Hospital	503	0	0	36	36	50	503	17	16	0	0	0	0	0	0	0	16	0	N.A.	N.A.	N.A.	N.A.
P.H.O.L. - Toronto	738	6	129	8	143	113	426	8	426	3	1	0	0	0	426	3	422	9	4	0	0	0
Sick Kids Hospital - Toronto	167	1	5	21	27	25	90	7	90	0	0	2	0	0	90	1	90	5	90	17	90	10
Sunnybrook & Women's College HSC	0	0	0	0	0	0	0	0	0	0	0	0	0	0	0	0	0	0	0	0	0	0
Sault Ste. Marie P.H.L.	28	0	6	0	6	2	15	0	15	0	0	0	0	0	15	0	14	0	1	0	0	0
Timmins P.H.L.	20	0	3	0	3	2	13	0	13	0	0	0	0	0	13	0	13	0	0	0	0	0
St. Joseph's - London	224	0	0	26	26	33	224	27	48	0	0	0	0	0	48	0	48	3	18	3	18	2
London P.H.L.	330	0	26	22	48	77	164	16	164	0	0	0	0	0	164	0	164	4	0	0	0	0
Orillia P.H.L.	63	0	7	2	9	7	27	4	27	0	0	0	0	0	27	0	27	1	0	0	0	0
Thunder Bay P.H.L.	62	0	20	0	20	3	33	2	33	0	0	0	0	0	33	1	31	0	2	0	0	0
Sudbury P.H.L.	57	0	12	3	15	6	31	2	31	0	1	0	0	0	31	1	31	0	0	0	0	0
Hamilton P.H.L.	170	1	9	9	19	34	101	6	101	0	0	1	0	0	101	1	101	0	0	0	0	0
Peterborough P.H.L.	106	0	4	0	4	10	78	0	78	0	0	1	0	0	78	1	78	5	0	0	0	0
Province of Ontario	2879	9	229	181	419	409	2056	152	1093	3	2	5	1	0	1077	9	1082	29	148	23	135	13
Manitoba	487	0	10	32	42	33	477	39	97	0	0	1	0	0	97	1	55	6	97	0	55	4
Regina	533	2	59	4	65	100	533	27	533	5	9	2	1	0	533	4	533	22	533	31	533	74
Saskatoon	0	0	0	0	0	0	0	0	0	0	0	0	0	0	0	0	0	0	0	0	0	0
Province of Saskatchewan	533	2	59	4	65	100	533	27	533	5	9	2	1	0	533	4	533	22	533	31	533	74
Province of Alberta	1260	7	60	26	93	142	965	0	965	8	8	2	1	0	965	14	965	63	965	60	965	78
Prairies	2280	9	129	62	200	275	1975	66	1595	13	17	5	2	0	1595	19	1553	91	1595	91	1553	156
British Columbia	803	26	104	35	165	141	803	37	336	2	1	1	1	0	336	10	336	19	227	20	227	19
Yukon	34	1	8	8	17	2	34	4	N.A.	N.A.	N.A.	N.A.	N.A.	N.A.	N.A.	N.A.	N.A.	N.A.	N.A.	N.A.	N.A.	N.A.
Northwest Territories	19	0	2	0	2	1	19	0	19	0	0	0	1	0	19	0	19	4	19	2	19	4
Nunavut	7	0	2	0	2	0	7	0	7	0	0	0	0	0	7	0	7	2	6	0	6	1
Territories	60	1	12	8	21	3	60	4	26	0	0	0	1	0	26	0	26	6	25	2	25	5
CANADA	13272	45	480	1625	2150	1961	11112	815	4230	26	22	13	5	0	4217	60	4138	183	2208	136	2791	248

Specimens from Yukon (YT), Northwest Territories (NT) and Nunavut (NU) are sent to reference laboratories in other provinces and reported results reflect specimens identified as originating from YT, NT or NU.

Delays in the reporting of data may cause data to change retrospectively.

Table 2: Respiratory Virus Detections/Isolations for the period August 27, 2017 - February 3, 2018 (Reporting Weeks / Code hebdomadaire 201735-201805)

Reporting Laboratory	Flu Tested	A(H1N1)pdm09 Positive	A(H3) Positive	A(UnS) Positive	Total Flu A Positive	Total Flu B Positive	RSV Tested	RSV Positive	PIV Tested	PIV 1 Positive	PIV 2 Positive	PIV 3 Positive	PIV 4 Positive	Other PIV Positive	Adeno Tested	Adeno Positive	hMPV Tested	hMPV Positive	Entero/Rhino Tested	Entero/Rhino Positive	Coron Tested	Coron Positive
Newfoundland	1614	0	3	80	83	55	1614	41	1614	86	9	29	0	0	1614	25	1615	95	1614	146	N.A.	N.A.
Prince Edward Island	573	3	56	0	59	84	585	54	43	0	0	2	0	0	43	2	43	0	43	5	43	2
Nova Scotia	1599	0	0	233	233	55	1614	158	308	4	1	1	1	0	308	4	308	4	308	53	308	3
New Brunswick	4050	2	111	530	643	182	3606	78	1360	25	21	2	10	0	1360	29	1360	39	1360	200	1360	26
Atlantic	7836	5	170	843	1018	376	7419	331	3325	115	31	32	13	0	3325	60	3326	138	3325	404	1711	31
Région Nord-Est	6270	0	0	970	970	501	5433	371	0	0	0	0	0	0	0	0	0	0	N.A.	N.A.	0	0
Québec-Chaudière-Appalaches	7518	0	0	1302	1302	643	7546	764	1904	29	1	0	19	0	1945	69	1635	4	N.A.	N.A.	1572	8
Centre-du-Québec	9002	0	0	1320	1320	1137	7175	805	0	0	0	0	0	0	0	0	0	0	N.A.	N.A.	0	0
Montréal-Laval	24703	0	0	2586	2586	1590	21202	1570	12113	177	22	56	34	0	12285	454	11684	139	N.A.	N.A.	10857	392
Ouest du Québec	6318	0	0	945	945	605	3662	377	0	0	0	0	0	0	0	0	0	0	N.A.	N.A.	0	0
Montérégie	4421	0	0	684	684	312	4279	369	0	0	0	0	0	0	0	0	0	0	N.A.	N.A.	0	0
Province of Québec	58232	0	0	7807	7807	4788	49297	4256	14017	206	23	56	53	0	14230	523	13319	143	N.A.	N.A.	12429	400
Ottawa P.H.L.	491	2	42	31	75	51	298	6	298	3	0	0	0	0	298	3	291	2	22	6	10	1
CHEO - Ottawa	4351	0	0	353	353	196	4350	367	495	12	1	2	8	0	522	13	577	13	521	125	521	24
Kingston P.H.L.	624	1	60	21	82	44	466	15	466	8	0	1	1	0	466	5	432	3	91	7	22	0
UHN / Mount Sinai Hospital	6209	0	0	278	278	258	6209	249	424	6	1	0	8	0	0	0	402	5	N.A.	N.A.	N.A.	N.A.
P.H.O.L. - Toronto	8989	66	735	56	857	489	7334	202	7334	100	8	14	1	0	7334	68	7114	56	549	48	234	5
Sick Kids Hospital - Toronto	1782	10	33	47	90	84	1500	168	1500	29	2	8	25	0	1500	32	1500	89	1500	367	1500	76
Sunnybrook & Women's College HSC	1512	3	71	1	75	62	1512	41	1512	19	8	2	3	0	1512	0	1512	19	1512	154	1512	52
Sault Ste. Marie P.H.L.	312	0	41	5	46	7	249	4	249	4	0	0	1	0	249	0	241	1	21	3	12	0
Timmins P.H.L.	213	6	34	5	45	17	148	2	148	0	0	0	0	0	148	1	140	0	14	1	2	0
St. Joseph's - London	2403	0	0	165	165	313	2403	253	750	23	1	0	11	0	750	20	676	14	448	108	398	11
London P.H.L.	2697	4	246	78	328	421	1790	92	1790	32	2	8	3	0	1790	7	1730	20	175	21	63	0
Orillia P.H.L.	823	0	78	30	108	45	619	32	619	15	0	2	0	0	619	5	612	10	33	4	11	0
Thunder Bay P.H.L.	683	0	166	18	184	9	479	6	479	8	1	2	0	0	479	3	471	4	11	0	3	0
Sudbury P.H.L.	679	3	65	6	74	20	573	7	573	7	1	0	0	0	572	4	547	0	41	1	13	0
Hamilton P.H.L.	1996	10	76	48	134	144	1610	96	1610	28	4	7	3	0	1610	16	1559	28	142	21	64	2
Peterborough P.H.L.	1263	3	40	20	63	81	1072	33	1072	20	0	2	0	0	1072	5	1068	13	50	12	44	2
Province of Ontario	35027	108	1687	1162	2957	2241	30612	1573	19319	314	29	48	64	0	18921	182	18872	277	5130	878	4409	173
Manitoba	7063	7	340	670	1017	135	6882	201	2824	55	12	2	10	0	2824	41	1423	73	2824	292	1423	44
Regina	7966	38	994	51	1083	457	7966	153	7966	356	89	10	29	0	7966	139	7966	362	7966	1584	7966	436
Saskatoon	3191	0	0	271	271	125	3191	71	3090	30	3	7	2	0	3191	35	3191	43	3041	365	3191	38
Province of Saskatchewan	11157	38	994	322	1354	582	11157	224	11056	386	92	17	31	0	11157	174	11157	405	11007	1949	11157	474
Province of Alberta	24764	96	3754	1258	5108	2092	19761	0	19761	485	136	70	207	0	19761	298	19761	824	19761	2841	19761	837
Prairies	42984	141	5088	2250	7479	2809	37800	425	33641	926	240	89	248	0	33742	513	32341	1302	33592	5082	32341	1355
British Columbia	12327	247	1054	326	1627	1675	12327	366	5247	151	38	21	73	0	5247	46	5247	118	3896	989	3896	188
Yukon	269	3	27	14	44	39	269	17	N.A.	N.A.	N.A.	N.A.	N.A.	N.A.	N.A.	N.A.	N.A.	N.A.	N.A.	N.A.	N.A.	N.A.
Northwest Territories	428	1	118	0	119	19	425	0	425	11	0	0	13	0	425	4	425	24	425	56	425	24
Nunavut	264	0	28	0	28	2	251	1	252	7	1	8	1	0	251	12	250	10	80	27	72	3
Territories	961	4	173	14	191	60	945	18	677	18	1	8	14	0	676	16	675	34	505	83	497	27
CANADA	157367	505	8172	12402	21079	11949	138400	6969	76226	1730	362	254	465	0	76141	1340	73780	2012	46448	7436	55283	2174

Specimens from YT, NT and NU are sent to reference laboratories in other provinces and reported results reflect specimens identified as originating from YT, NT or NU.

Delays in the reporting of data may cause data to change retrospectively.

Due to reporting delays, the sum of weekly report totals do not add up to cumulative totals.

Figure 1: Number positive laboratory tests for other respiratory viruses by report week, Canada, 2017-18

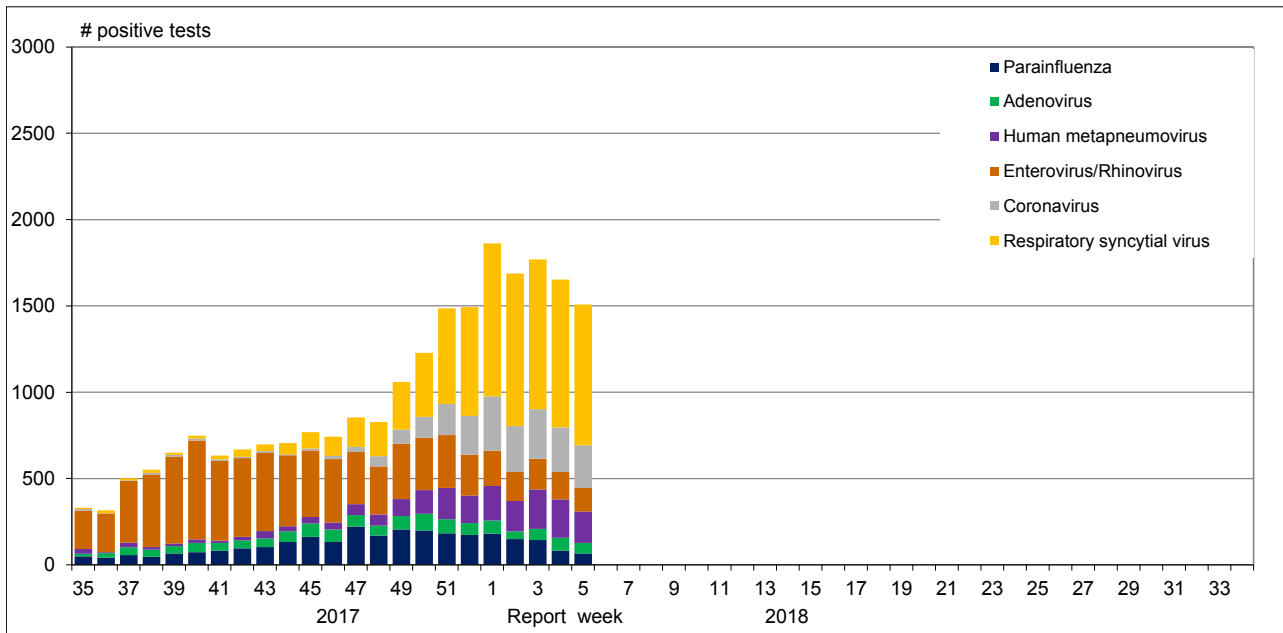


Figure 2: Positive Influenza Tests (%) in Canada by Region by Week of Report

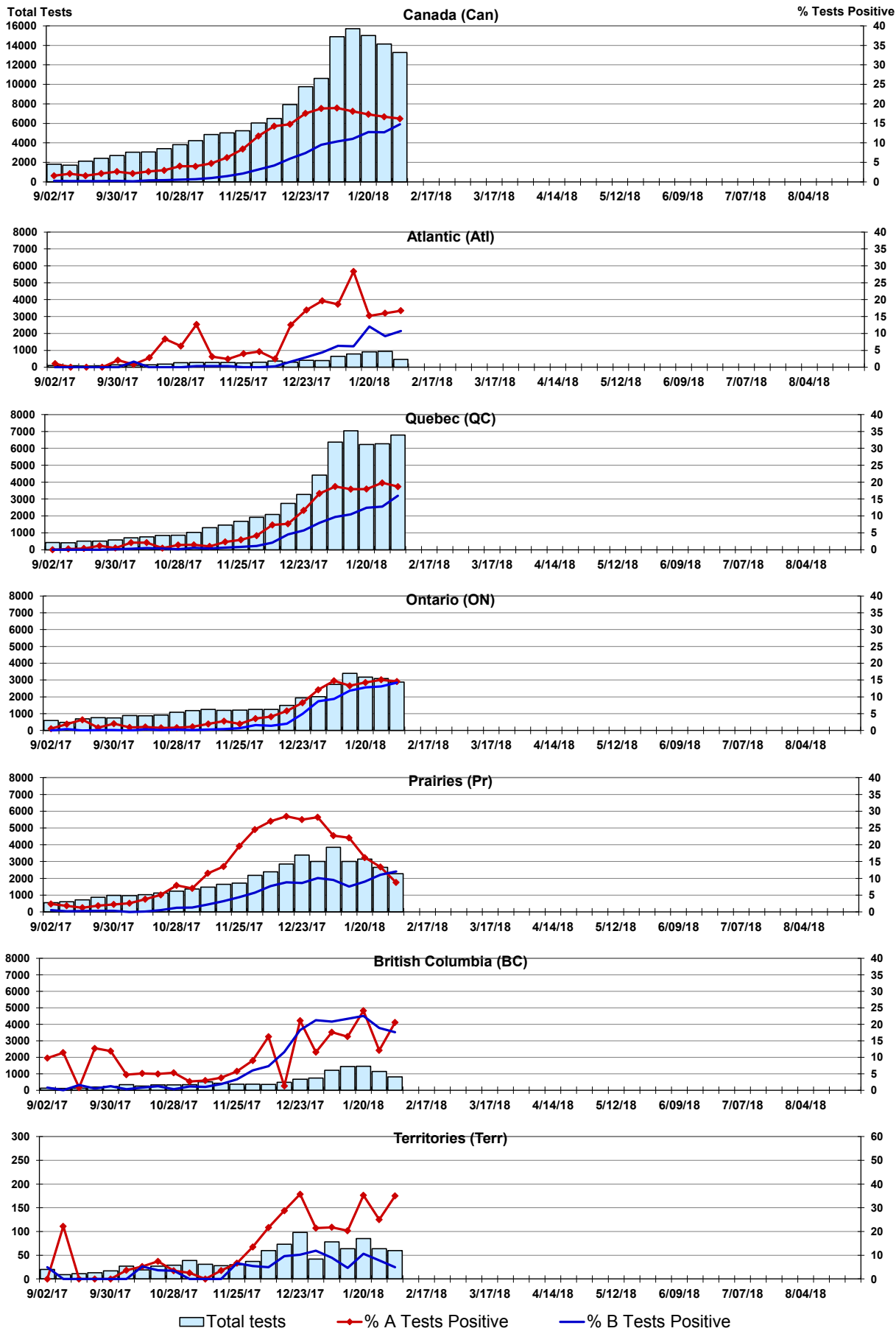


Figure 3: Positive Respiratory syncytial virus (RSV) Tests (%) in Canada by Region by Week of Report

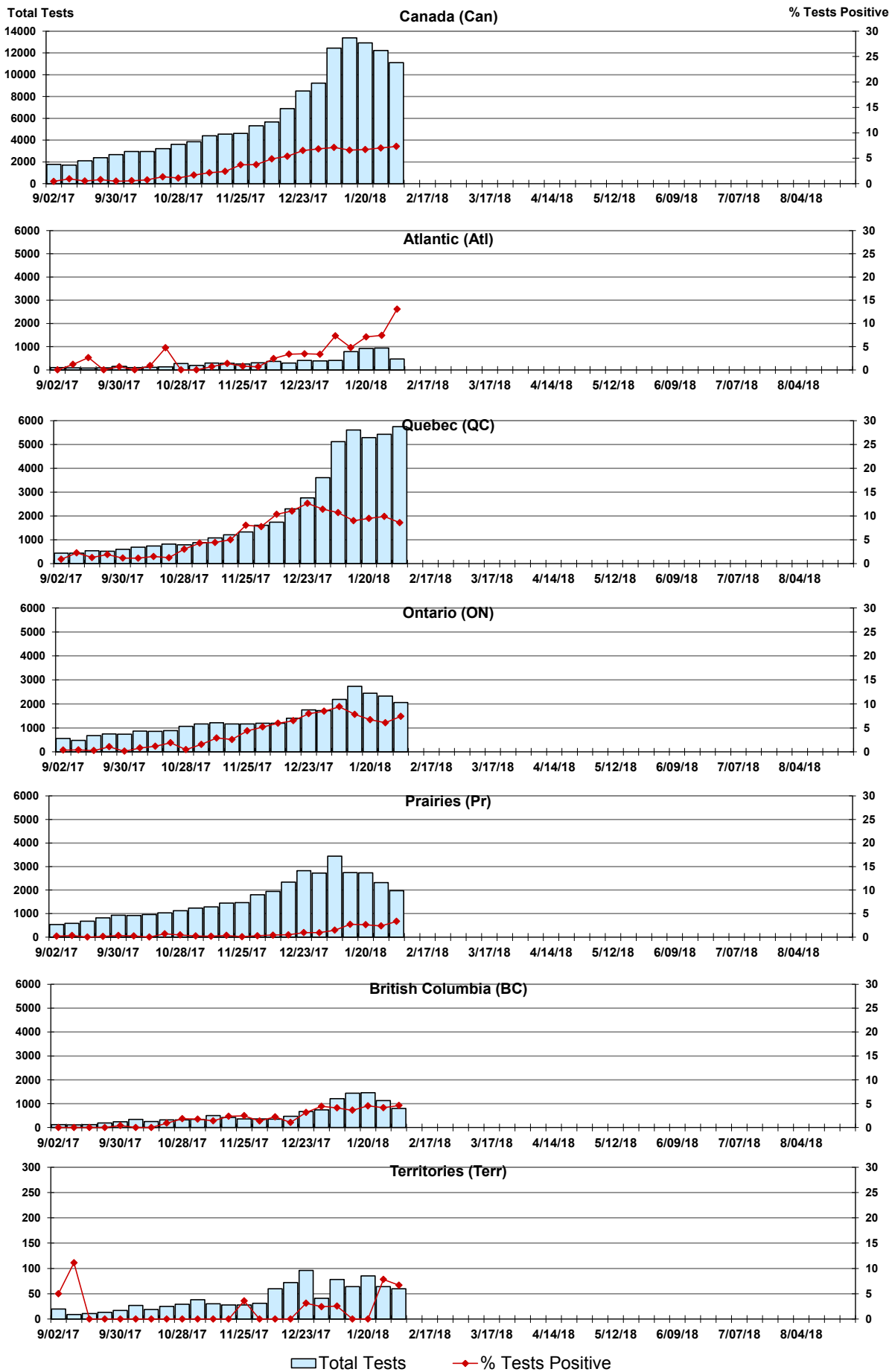


Figure 4: Positive Parainfluenza (PIV) Tests (%) in Canada by Region by Week of Report

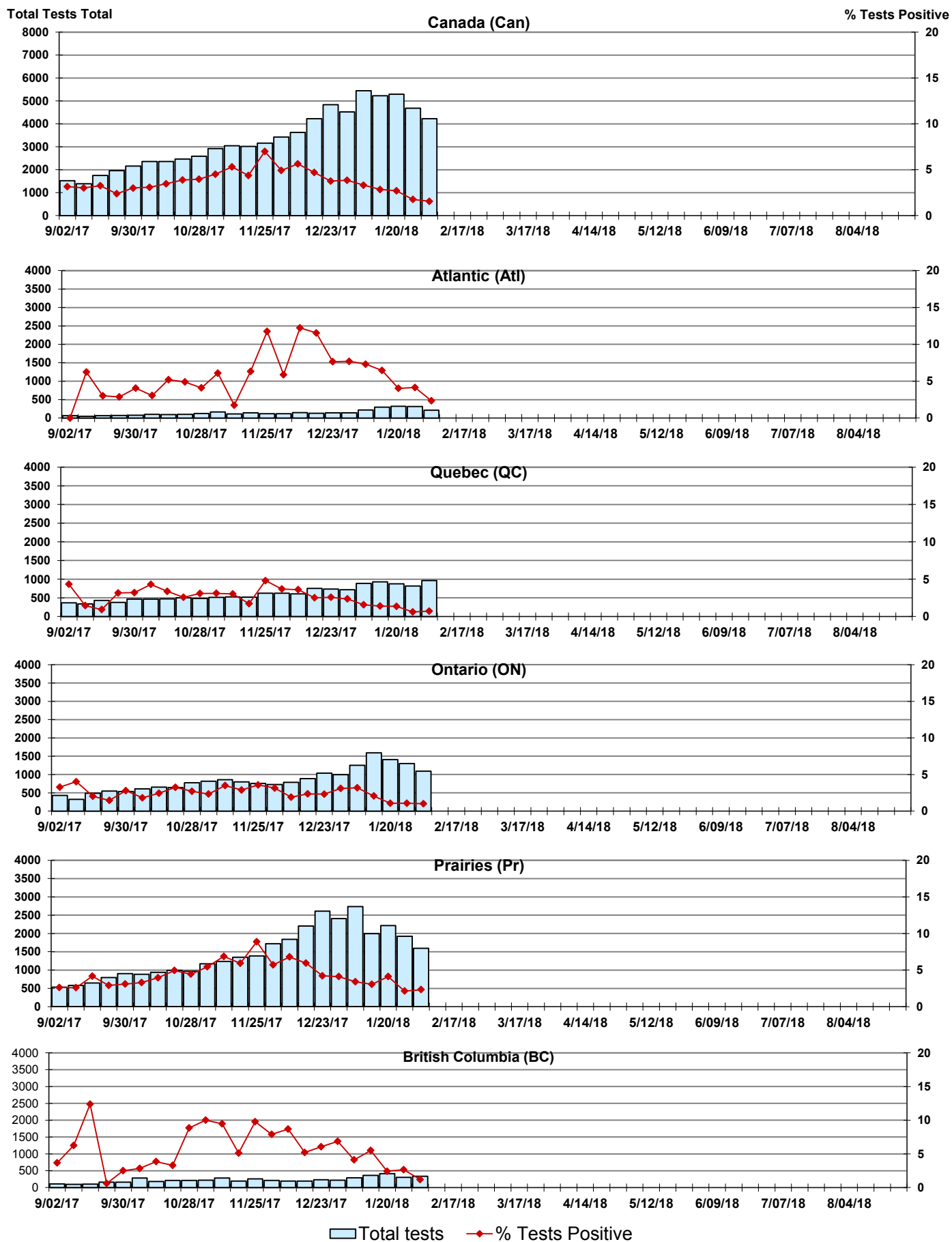


Figure 5: Positive Adenovirus (adeno) Tests (%) in Canada by Region by Week of Report

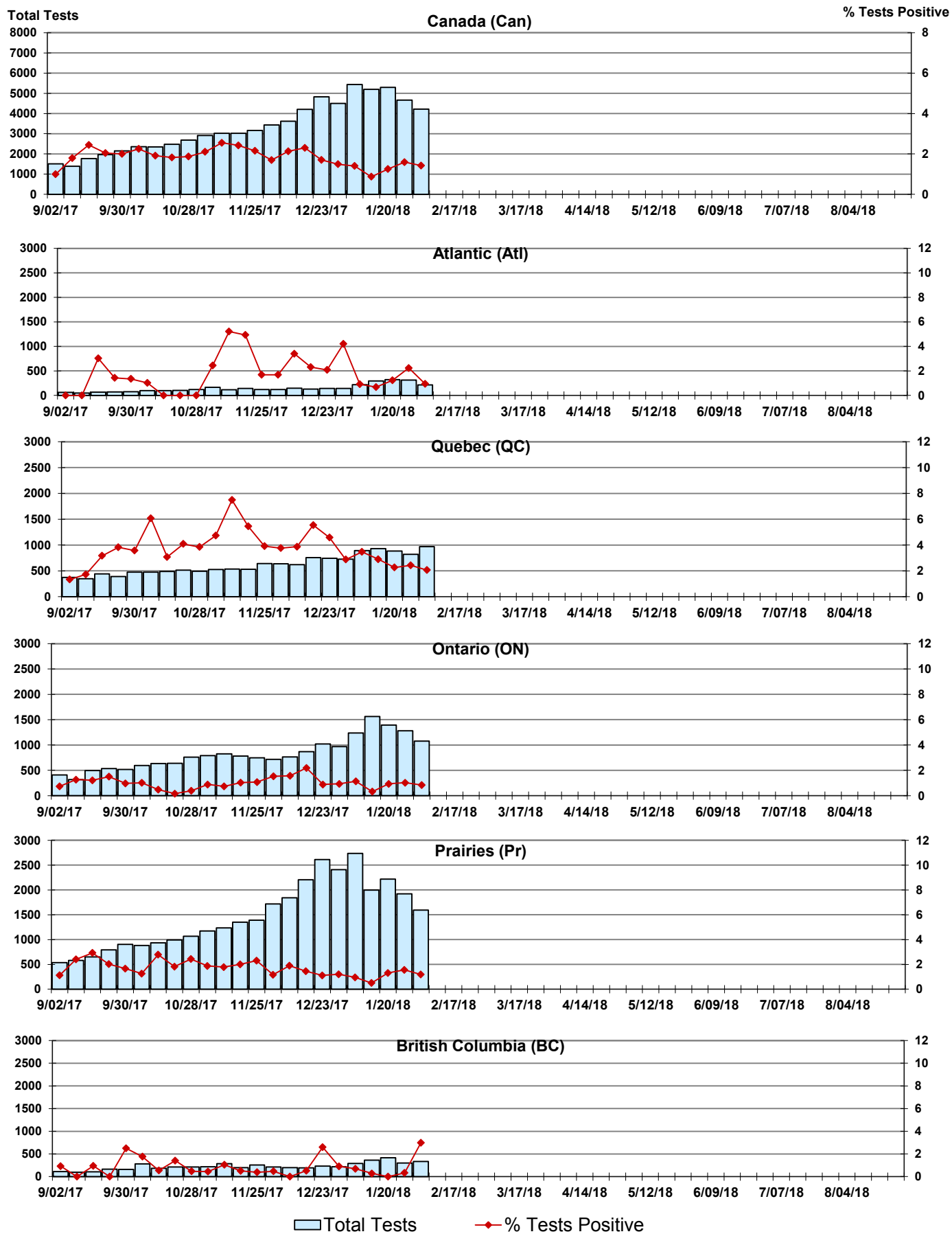


Figure 6: Positive human metapneumovirus (hMPV) Tests (%) in Canada by Region by Week of Report

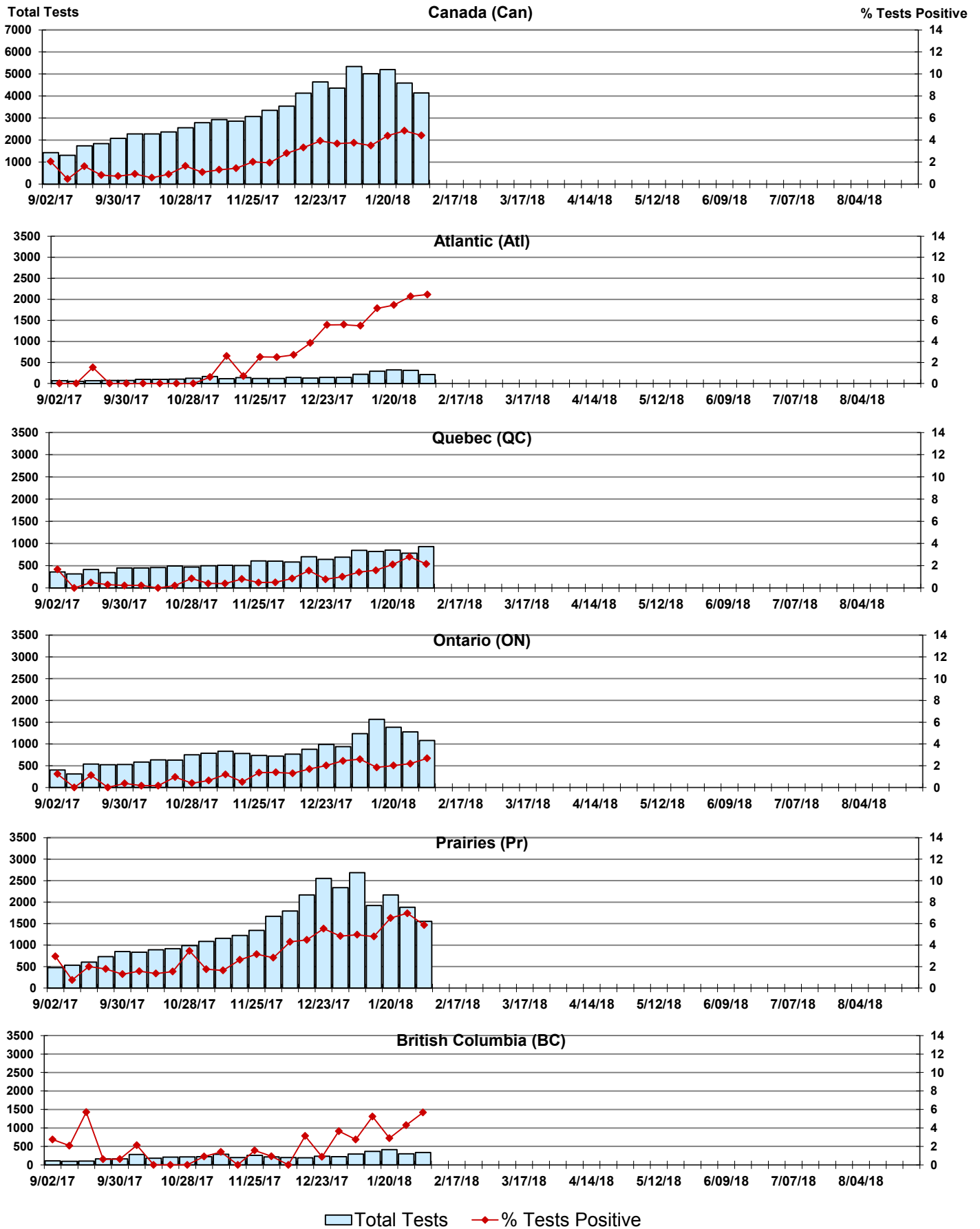


Figure 7: Positive Enterovirus/Rhinovirus (entero/rhino) Tests (%) in Canada by Region by Week of Report

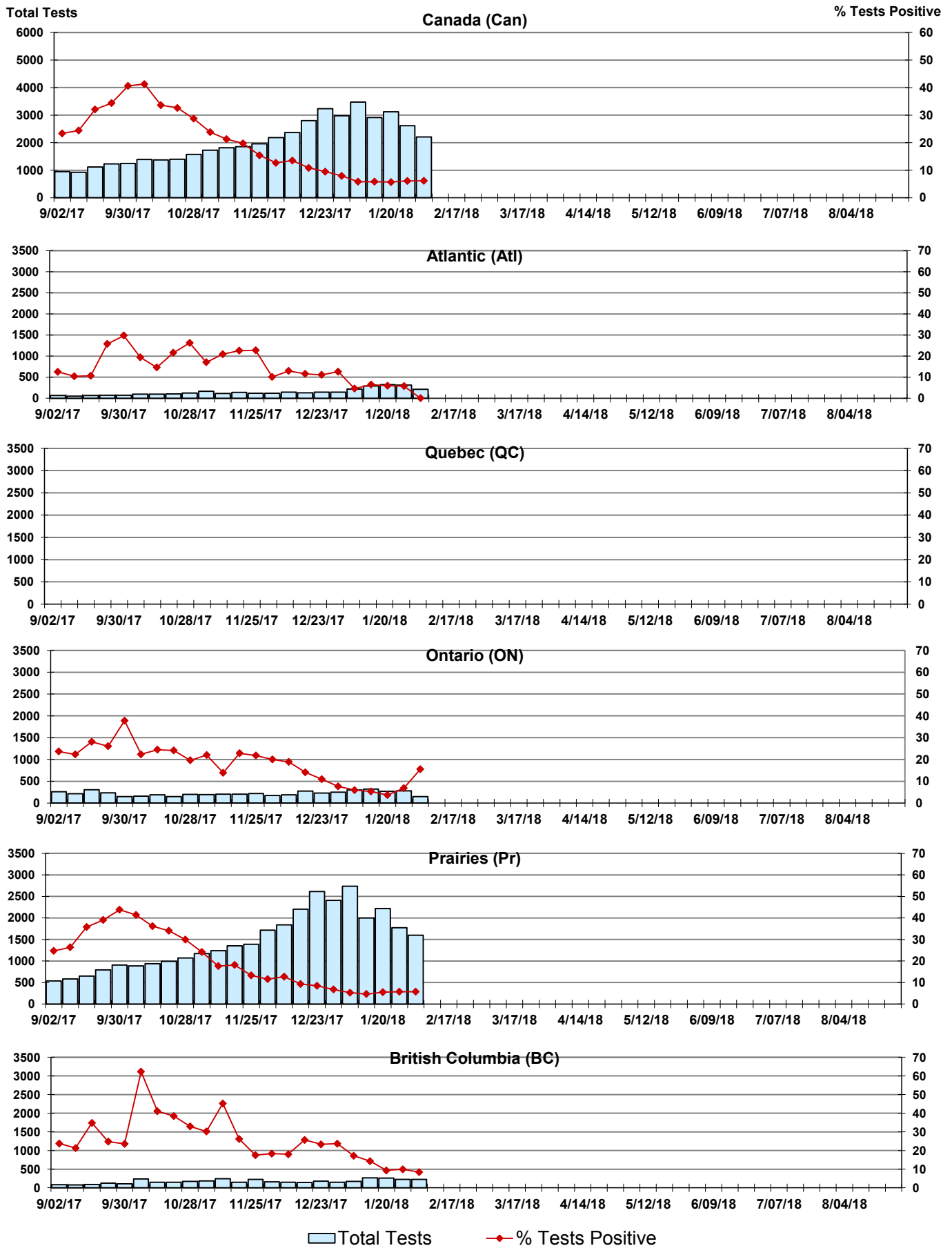
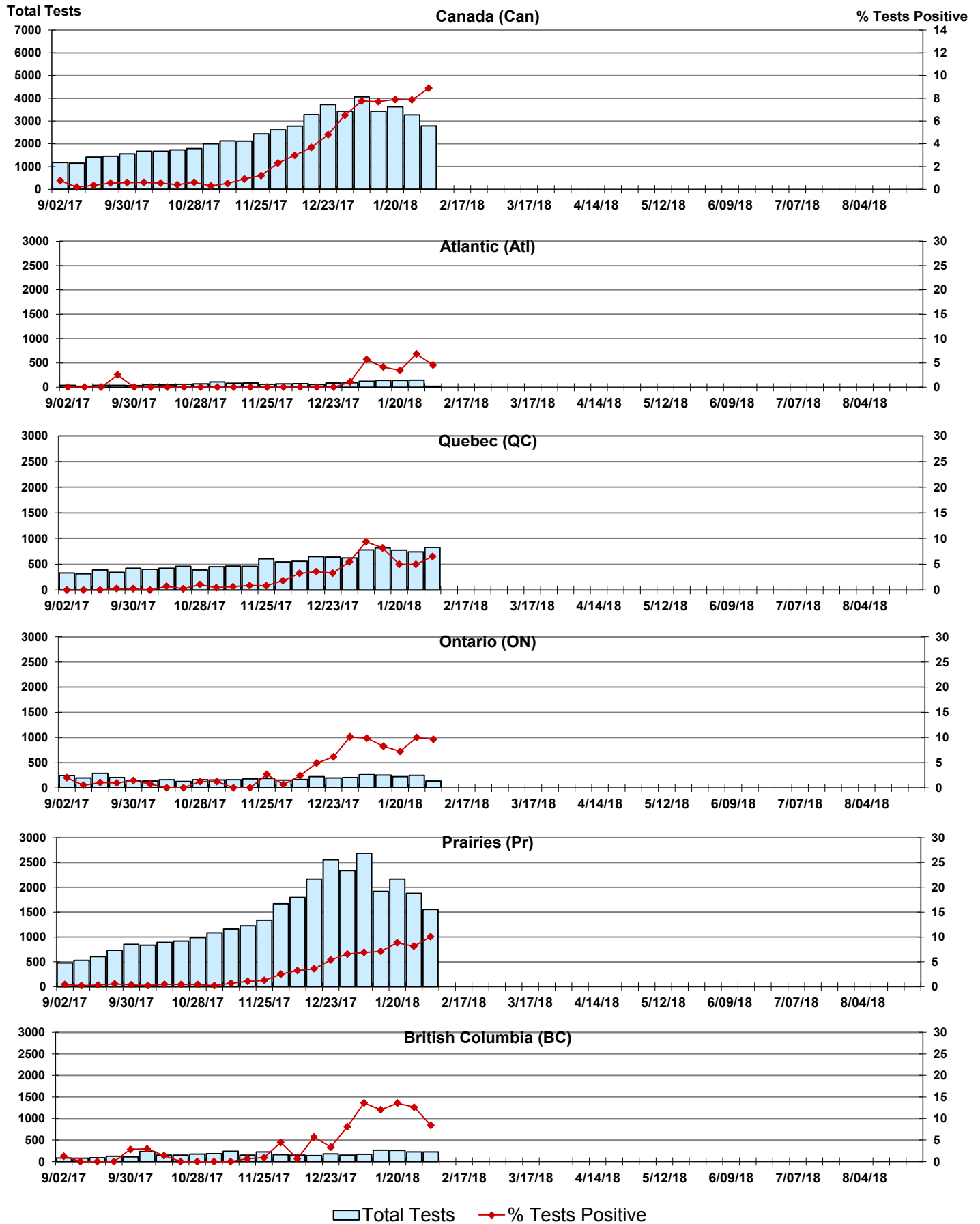


Figure 8: Positive Coronavirus (coron) Tests (%) in Canada by Region by Week of Report



Abbreviations:

A(H1N1)pdm09: Influenza A(H1N1)pdm09

A(H3): Influenza A(H3N2)

A (UnS): Influenza A (Unsubtyped)

Adeno: Adenovirus

CHEO: Children's Hospital of Eastern Ontario

Coron: Coronavirus

Entero: Enterovirus

hMPV: human metapneumovirus

HSC: Health Sciences Centre

N.A.: Not Applicable

P.H.L.: Public Health Laboratory

P.H.O.L.: Public Health Ontario Laboratory

PIV: Parainfluenza

Rhino: Rhinovirus

RSV: Respiratory syncytial virus

UHN: University Health Network

Notes:

Specimens from Yukon (YT), Northwest Territories (NT) and Nunavut (NU) are sent to reference laboratories in other provinces. Results reported for the Territories reflect the number of specimens that are identified as originating from YT, NT or NU.

Delays in the reporting of data may cause data to change retrospectively.

Due to reporting delays, the sum of weekly report totals do not add up to cumulative totals.