

Respiratory Virus Detections in Canada

Respiratory Virus Report, Week 10 - ending March 10, 2018

The Respiratory Virus Detection Surveillance System collects data from select laboratories across Canada on the number of tests performed and the number of tests positive for influenza and other respiratory viruses. Data are reported on a weekly basis year-round to the Centre for Immunization and Respiratory Infectious Diseases (CIRID), Public Health Agency of Canada. These data are also summarized in the weekly FluWatch report.

Table 1: Respiratory Virus Detections/Isolations for the week ending March 10, 2018 (Reporting Week 201810)

Reporting Laboratory	Flu Tested	A(H1N1)pdm09 Positive	A(H3) Positive	A(UnS) Positive	Total Flu A Positive	Total Flu B Positive	RSV Tested	RSV Positive	PIV Tested	PIV 1 Positive	PIV 2 Positive	PIV 3 Positive	PIV 4 Positive	Other PIV Positive	Adeno Tested	Adeno Positive	hMPV Tested	hMPV Positive	Entero/Rhino Tested	Entero/Rhino Positive	Coron Tested	Coron Positive
Newfoundland	251	0	0	23	23	40	251	16	251	1	0	0	0	0	251	2	251	13	251	3	N.A.	N.A.
Prince Edward Island	63	0	6	0	6	11	64	13	5	0	0	0	0	0	5	1	5	0	5	1	5	1
Nova Scotia	204	0	0	37	37	22	206	36	16	0	0	0	0	0	16	0	16	0	16	2	16	0
New Brunswick	549	5	16	72	93	97	549	58	65	0	1	1	0	0	65	0	65	4	65	4	65	8
Atlantic	1067	5	22	132	159	170	1070	123	337	1	1	1	0	0	337	3	337	17	337	10	86	9
Région Nord-Est	597	0	0	71	71	90	462	37	0	0	0	0	0	0	0	0	0	0	N.A.	N.A.	0	0
Québec-Chaudière-Appalaches	757	0	0	116	116	212	688	62	70	2	0	0	0	0	67	1	61	1	N.A.	N.A.	61	1
Centre-du-Québec	958	0	0	136	136	188	782	57	0	0	0	0	0	0	0	0	0	0	N.A.	N.A.	0	0
Montréal-Laval	1995	0	0	240	240	244	1700	91	742	5	0	6	2	0	742	23	734	37	N.A.	N.A.	642	19
Ouest du Québec	751	0	0	111	111	93	513	37	0	0	0	0	0	0	0	0	0	0	N.A.	N.A.	0	0
Montérégie	362	0	0	55	55	41	362	25	0	0	0	0	0	0	0	0	0	0	N.A.	N.A.	0	0
Province of Québec	5420	0	0	729	729	868	4507	309	812	7	0	6	2	0	809	24	795	38	N.A.	N.A.	703	20
Ottawa P.H.L.	25	0	6	3	9	2	8	0	8	0	0	0	0	0	8	0	8	0	0	0	0	0
CHEO - Ottawa	0	0	0	0	0	0	0	0	0	0	0	0	0	0	0	0	0	0	0	0	0	0
Kingston P.H.L.	9	0	1	0	1	2	4	0	4	0	0	0	0	0	4	0	3	0	1	0	0	0
UHN / Mount Sinai Hospital	416	0	0	31	31	20	416	12	29	1	0	0	0	0	0	0	29	3	N.A.	N.A.	N.A.	N.A.
P.H.O.L. - Toronto	469	11	65	8	84	58	297	6	297	0	0	0	0	0	297	3	290	8	7	0	0	0
Sick Kids Hospital - Toronto	110	0	2	5	7	14	66	3	66	0	0	2	1	0	66	0	66	4	66	13	66	5
Sunnybrook & Women's College HSC	98	1	15	0	16	9	98	5	98	0	0	0	1	0	98	0	98	3	98	3	98	0
Sault Ste. Marie P.H.L.	18	0	4	0	4	1	13	0	13	0	0	0	0	0	13	0	13	0	0	0	0	0
Timmins P.H.L.	23	0	5	1	6	3	14	4	14	0	0	0	0	0	14	0	14	0	0	0	0	0
St. Joseph's - London	191	0	0	18	18	11	191	13	46	0	0	1	0	0	46	2	46	1	20	0	20	2
London P.H.L.	167	2	12	3	17	21	113	3	113	0	0	0	0	0	113	2	111	7	2	0	0	0
Orillia P.H.L.	38	0	2	2	4	5	23	1	23	0	0	0	0	0	23	0	23	0	0	0	0	0
Thunder Bay P.H.L.	41	0	2	0	2	12	25	1	25	0	0	0	0	0	25	0	25	1	0	0	0	0
Sudbury P.H.L.	47	0	3	3	6	9	32	0	32	0	0	0	0	0	32	0	30	0	2	0	0	0
Hamilton P.H.L.	114	2	11	5	18	27	58	5	57	1	0	0	0	0	57	1	56	1	1	0	0	0
Peterborough P.H.L.	11	0	0	2	2	0	9	1	9	0	0	0	0	0	9	0	9	0	0	0	0	0
Province of Ontario	1777	16	128	81	225	194	1367	54	834	2	0	3	2	0	805	8	821	28	197	16	184	7
Manitoba	301	0	3	6	9	43	288	36	69	0	0	0	0	0	69	1	32	2	69	4	32	2
Regina	480	0	10	0	10	100	480	49	480	1	1	1	0	0	480	5	480	39	480	36	480	51
Saskatoon	151	0	0	8	8	22	151	14	151	0	0	0	0	0	151	0	151	0	151	2	151	4
Province of Saskatchewan	631	0	10	8	18	122	631	63	631	1	1	1	0	0	631	5	631	39	631	38	631	55
Province of Alberta	999	17	21	20	58	110	791	0	791	3	3	8	16	0	791	8	791	84	791	88	791	70
Prairies	1931	17	34	34	85	275	1710	99	1491	4	4	9	16	0	1491	14	1454	125	1491	130	1454	127
British Columbia	878	36	73	21	130	160	878	57	349	1	1	1	0	0	349	4	349	40	214	27	214	26
Yukon	12	1	1	0	2	0	12	3	N.A.	N.A.	N.A.	N.A.	N.A.	N.A.	N.A.	N.A.	N.A.	N.A.	N.A.	N.A.	N.A.	N.A.
Northwest Territories	8	0	0	0	0	2	8	0	8	0	0	0	0	0	8	0	8	0	8	1	8	0
Nunavut	1	0	0	0	0	0	1	0	1	0	0	0	0	0	1	1	1	0	1	0	1	0
Territories	21	1	1	0	2	2	21	3	9	0	0	0	0	0	9	1	9	0	9	1	9	0
CANADA	11094	75	258	997	1330	1669	9553	645	3832	15	6	20	20	0	3800	54	3765	248	2248	184	2650	189

Specimens from Yukon (YT), Northwest Territories (NT) and Nunavut (NU) are sent to reference laboratories in other provinces and reported results reflect specimens identified as originating from YT, NT or NU.

Delays in the reporting of data may cause data to change retrospectively.

Table 2: Respiratory Virus Detections/Isolations for the period August 27, 2017 - March 10, 2018 (Reporting Weeks / Code hebdomadaire 201735-201810)

Reporting Laboratory	Flu Tested	A(H1N1)pdm09 Positive	A(H3) Positive	A(UnS) Positive	Total Flu A Positive	Total Flu B Positive	RSV Tested	RSV Positive	PIV Tested	PIV 1 Positive	PIV 2 Positive	PIV 3 Positive	PIV 4 Positive	Other PIV Positive	Adeno Tested	Adeno Positive	hMPV Tested	hMPV Positive	Entero/Rhino Tested	Entero/Rhino Positive	Coron Tested	Coron Positive
Newfoundland	2796	0	3	253	256	265	2796	113	2796	95	18	32	0	0	2796	36	2797	158	2796	173	N.A.	N.A.
Prince Edward Island	889	3	84	0	87	135	911	138	54	1	0	2	0	0	54	3	54	0	54	7	54	4
Nova Scotia	2692	0	0	386	386	172	2716	383	381	5	1	2	1	0	381	5	381	12	381	60	381	13
New Brunswick	7079	11	202	909	1122	705	6641	317	1854	26	31	4	13	0	1854	39	1854	76	1854	227	1854	95
Atlantic	13456	14	289	1548	1851	1277	13064	951	5085	127	50	38	16	0	5085	83	5086	246	5085	467	2289	112
Région Nord-Est	10497	0	0	1649	1649	1219	8937	608	0	0	0	0	0	0	0	0	0	0	N.A.	N.A.	0	0
Québec-Chaudière-Appalaches	12657	0	0	2349	2349	1741	12344	1122	2352	39	1	0	19	0	2389	82	1994	6	N.A.	N.A.	1927	16
Centre-du-Québec	15156	0	0	2448	2448	2355	12095	1187	0	0	0	0	0	0	0	0	0	0	N.A.	N.A.	0	0
Montréal-Laval	36214	0	0	4429	4429	3298	31363	2162	16088	192	22	75	41	0	16260	530	15586	304	N.A.	N.A.	14309	511
Ouest du Québec	10448	0	0	1664	1664	1319	6503	616	0	0	0	0	0	0	0	0	0	0	N.A.	N.A.	0	0
Montérégie	6767	0	0	1088	1088	726	6625	521	0	0	0	0	0	0	0	0	0	0	N.A.	N.A.	0	0
Province of Québec	91739	0	0	13627	13627	10658	77867	6216	18440	231	23	75	60	0	18649	612	17580	310	N.A.	N.A.	16236	527
Ottawa P.H.L.	712	2	92	47	141	106	380	9	380	4	0	0	0	0	380	3	371	2	26	6	10	1
CHEO - Ottawa	5981	0	0	600	600	421	5980	556	599	12	1	2	8	0	626	16	681	18	625	134	625	32
Kingston P.H.L.	826	4	86	30	120	77	591	25	591	9	0	1	1	0	591	5	553	9	101	7	22	0
UHN / Mount Sinai Hospital	8732	0	0	505	505	474	8732	329	517	7	1	0	8	0	0	0	495	9	N.A.	N.A.	N.A.	N.A.
P.H.O.L. - Toronto	12157	117	1231	99	1447	956	9329	244	9329	104	9	15	1	0	9329	83	9061	91	624	48	234	5
Sick Kids Hospital - Toronto	2396	11	49	101	161	156	1875	187	1875	29	2	12	27	0	1875	41	1875	109	1875	421	1875	109
Sunnybrook & Women's College HSC	2154	6	139	3	148	147	2154	65	2154	21	8	3	8	0	2154	0	2154	34	2154	163	2154	77
Sault Ste. Marie P.H.L.	492	1	84	8	93	31	361	7	361	7	0	0	1	0	361	0	352	2	22	3	12	0
Timmins P.H.L.	347	6	66	6	78	29	239	13	239	1	0	0	0	0	239	1	231	0	18	1	2	0
St. Joseph's - London	3471	0	0	320	320	387	3471	325	1023	24	1	1	11	0	976	24	949	27	561	119	511	16
London P.H.L.	3797	17	385	90	492	590	2485	154	2485	36	2	13	3	0	2485	10	2412	40	224	21	63	0
Orillia P.H.L.	1180	4	123	51	178	87	857	43	857	17	0	2	0	0	857	6	847	17	36	4	11	0
Thunder Bay P.H.L.	942	0	188	19	207	49	677	17	677	12	2	3	0	0	677	4	666	11	14	0	3	0
Sudbury P.H.L.	928	3	109	6	118	62	738	7	738	8	2	0	0	0	737	4	707	0	47	1	13	0
Hamilton P.H.L.	2762	22	159	71	252	291	2055	118	2054	32	5	8	3	0	2054	23	1995	39	165	21	64	2
Peterborough P.H.L.	1485	3	66	41	110	116	1201	38	1201	21	0	2	0	0	1201	5	1197	23	51	12	44	2
Province of Ontario	48362	196	2777	1997	4970	3979	41125	2137	25080	344	33	62	71	0	24542	225	24546	431	6543	961	5643	244
Manitoba	9007	7	369	730	1106	396	8792	391	3302	56	13	2	10	0	3302	46	1671	81	3302	305	1671	74
Regina	10445	42	1126	59	1227	998	10445	397	10445	366	100	20	35	0	10445	169	10445	560	10445	1746	10445	693
Saskatoon	4310	0	0	359	359	267	4310	156	4209	32	3	8	2	0	4310	38	4310	64	4160	379	4310	78
Province of Saskatchewan	14755	42	1126	418	1586	1265	14755	553	14654	398	103	28	37	0	14755	207	14755	624	14605	2125	14755	771
Province of Alberta	30687	152	3936	1364	5452	2872	24451	0	24451	516	162	102	250	0	24451	378	24451	1331	24451	3270	24451	1173
Prairies	54449	201	5431	2512	8144	4533	47998	944	42407	970	278	132	297	0	42508	631	40877	2036	42358	5700	40877	2018
British Columbia	16668	375	1310	417	2102	2497	16668	644	6656	161	44	29	73	0	6656	58	6656	238	4839	1088	4839	320
Yukon	347	7	40	18	65	41	347	33	N.A.	N.A.	N.A.	N.A.	N.A.	N.A.	N.A.	N.A.	N.A.	N.A.	N.A.	N.A.	N.A.	N.A.
Northwest Territories	538	4	125	0	129	32	533	0	533	11	0	0	14	0	533	9	533	30	533	61	533	42
Nunavut	325	6	36	0	42	3	312	7	313	7	4	13	2	0	312	21	310	16	141	36	132	7
Territories	1210	17	201	18	236	76	1192	40	846	18	4	13	16	0	845	30	843	46	674	97	665	49
CANADA	225884	803	10008	20119	30930	23020	197914	10932	98514	1851	432	349	533	0	98285	1639	95588	3307	59499	8313	70549	3270

Specimens from YT, NT and NU are sent to reference laboratories in other provinces and reported results reflect specimens identified as originating from YT, NT or NU.

Delays in the reporting of data may cause data to change retrospectively.

Due to reporting delays, the sum of weekly report totals do not add up to cumulative totals.

Figure 1: Number positive laboratory tests for other respiratory viruses by report week, Canada, 2017-18

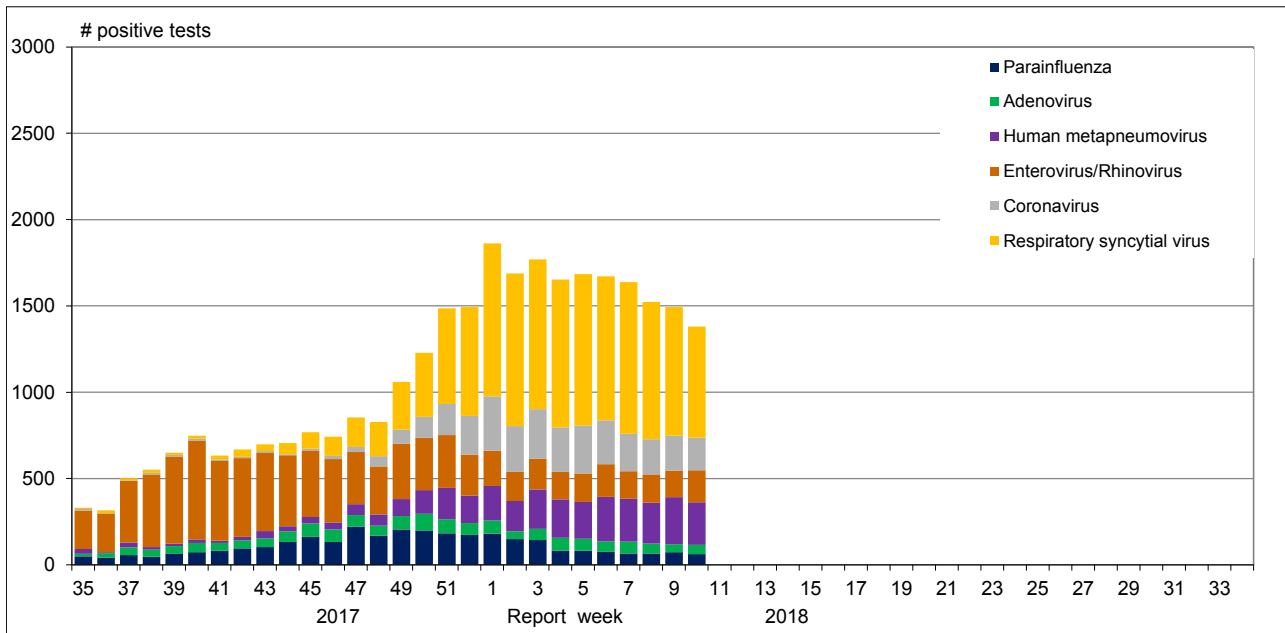


Figure 2: Positive Influenza Tests (%) in Canada by Region by Week of Report

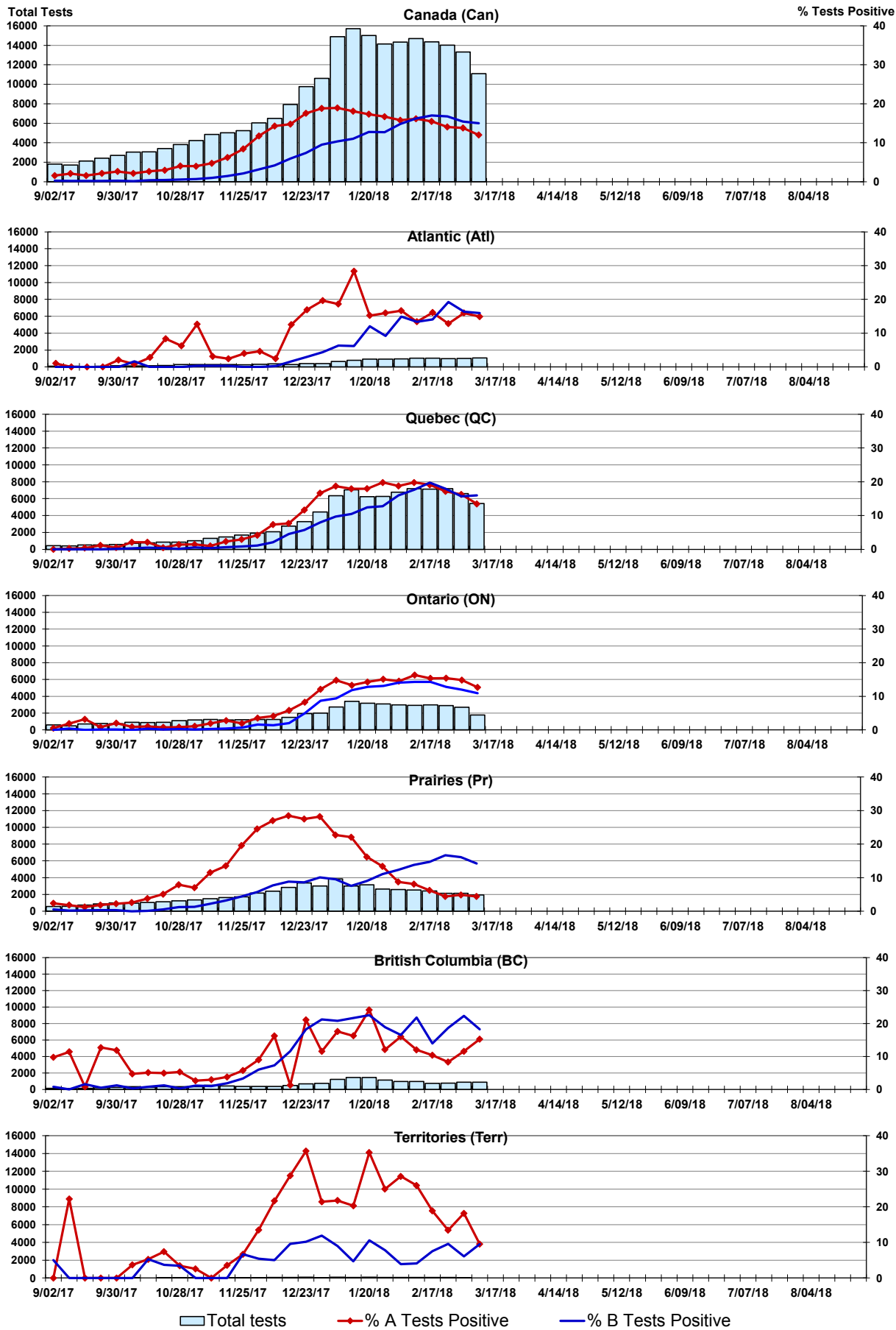


Figure 3: Positive Respiratory syncytial virus (RSV) Tests (%) in Canada by Region by Week of Report

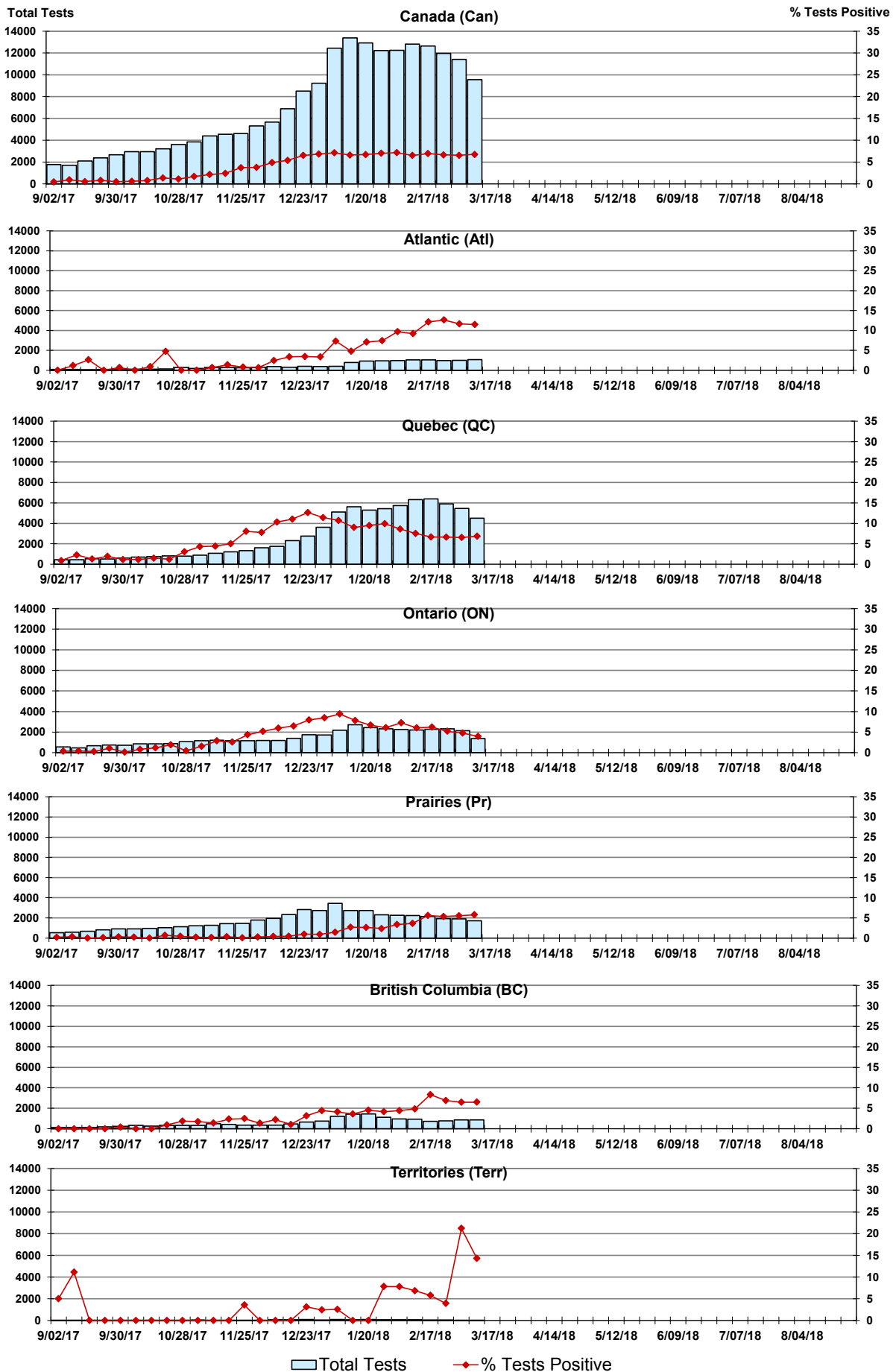


Figure 4: Positive Parainfluenza (PIV) Tests (%) in Canada by Region by Week of Report

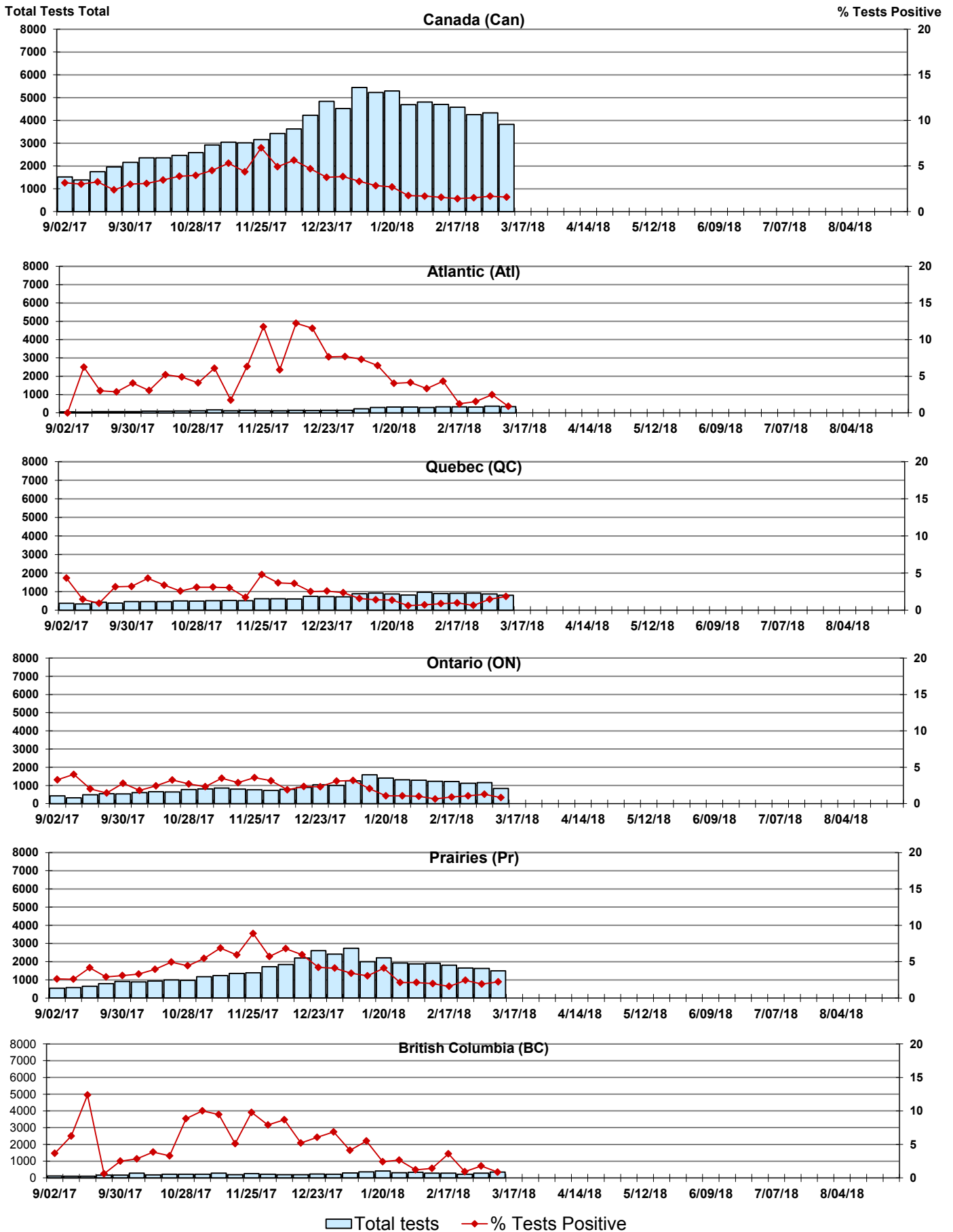


Figure 5: Positive Adenovirus (adeno) Tests (%) in Canada by Region by Week of Report

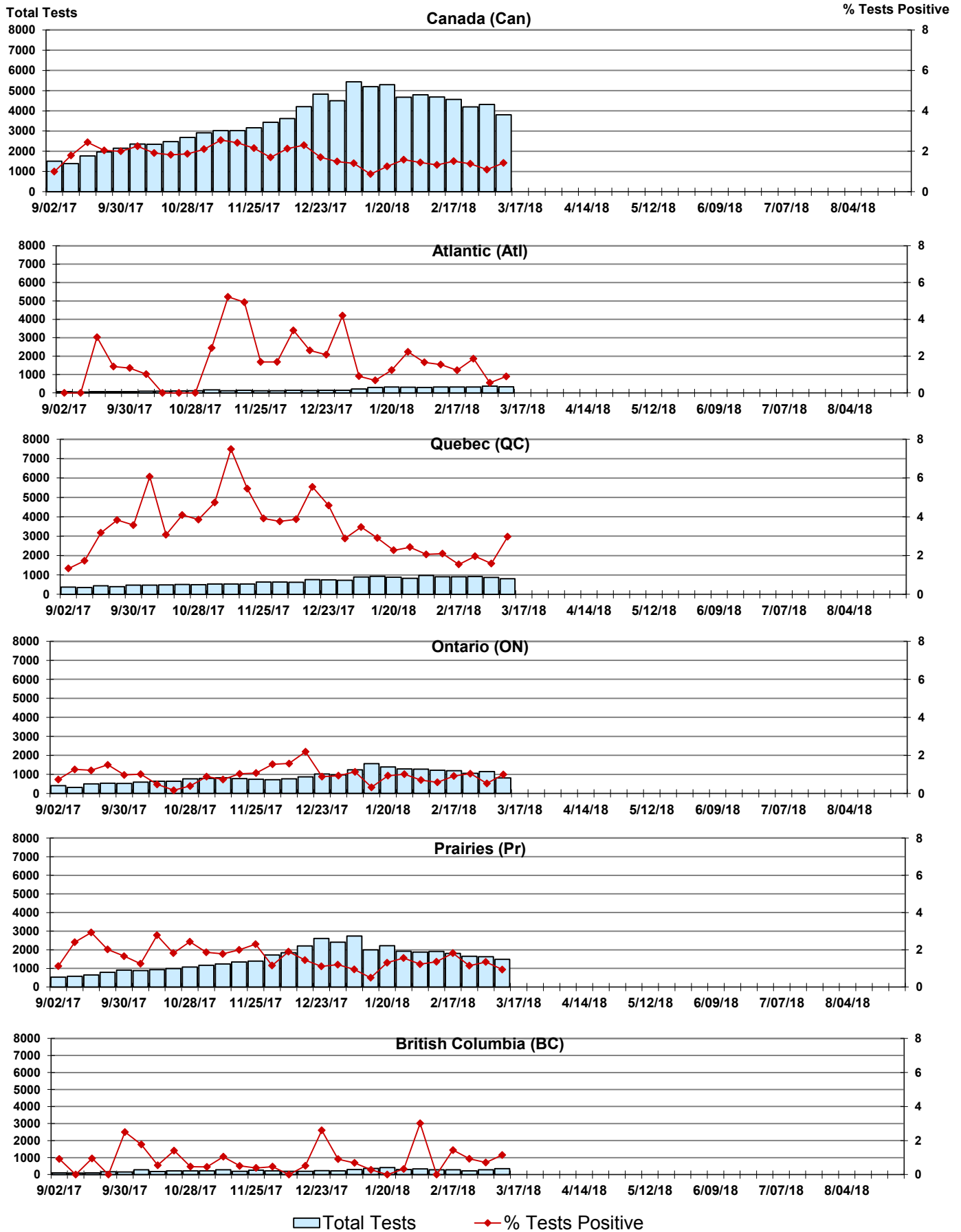


Figure 6: Positive human metapneumovirus (hMPV) Tests (%) in Canada by Region by Week of Report

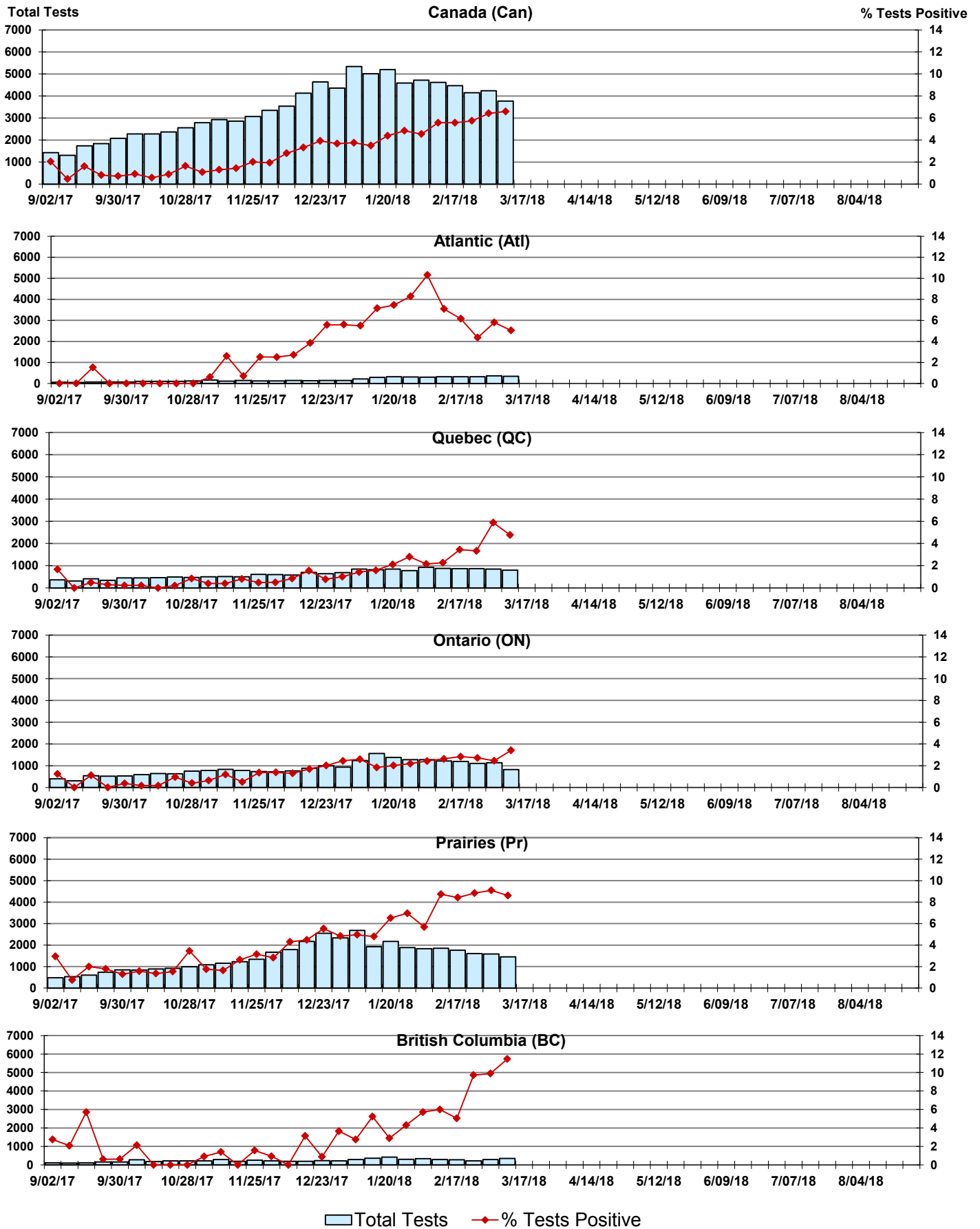


Figure 7: Positive Enterovirus/Rhinovirus (entero/rhino) Tests (%) in Canada by Region by Week of Report

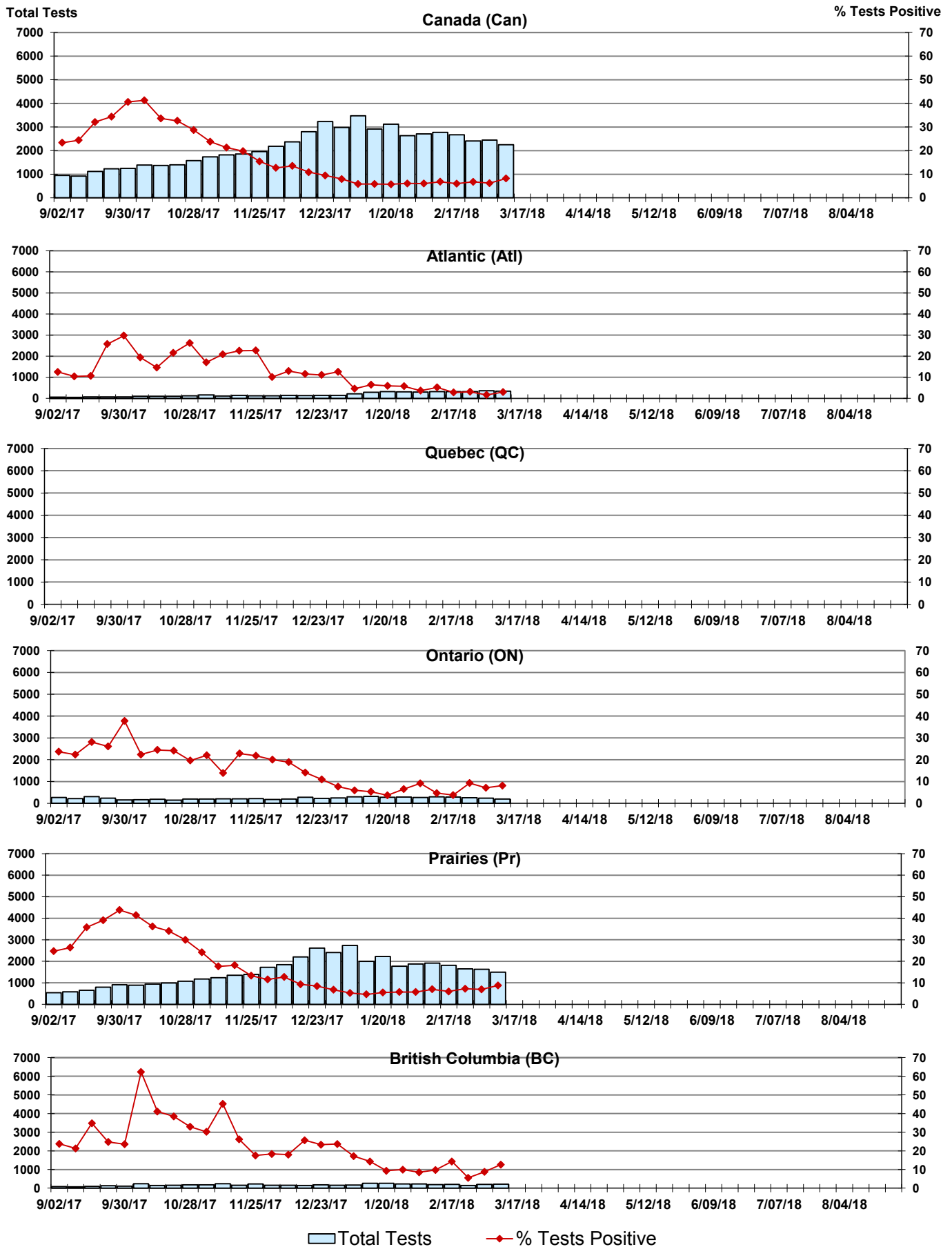
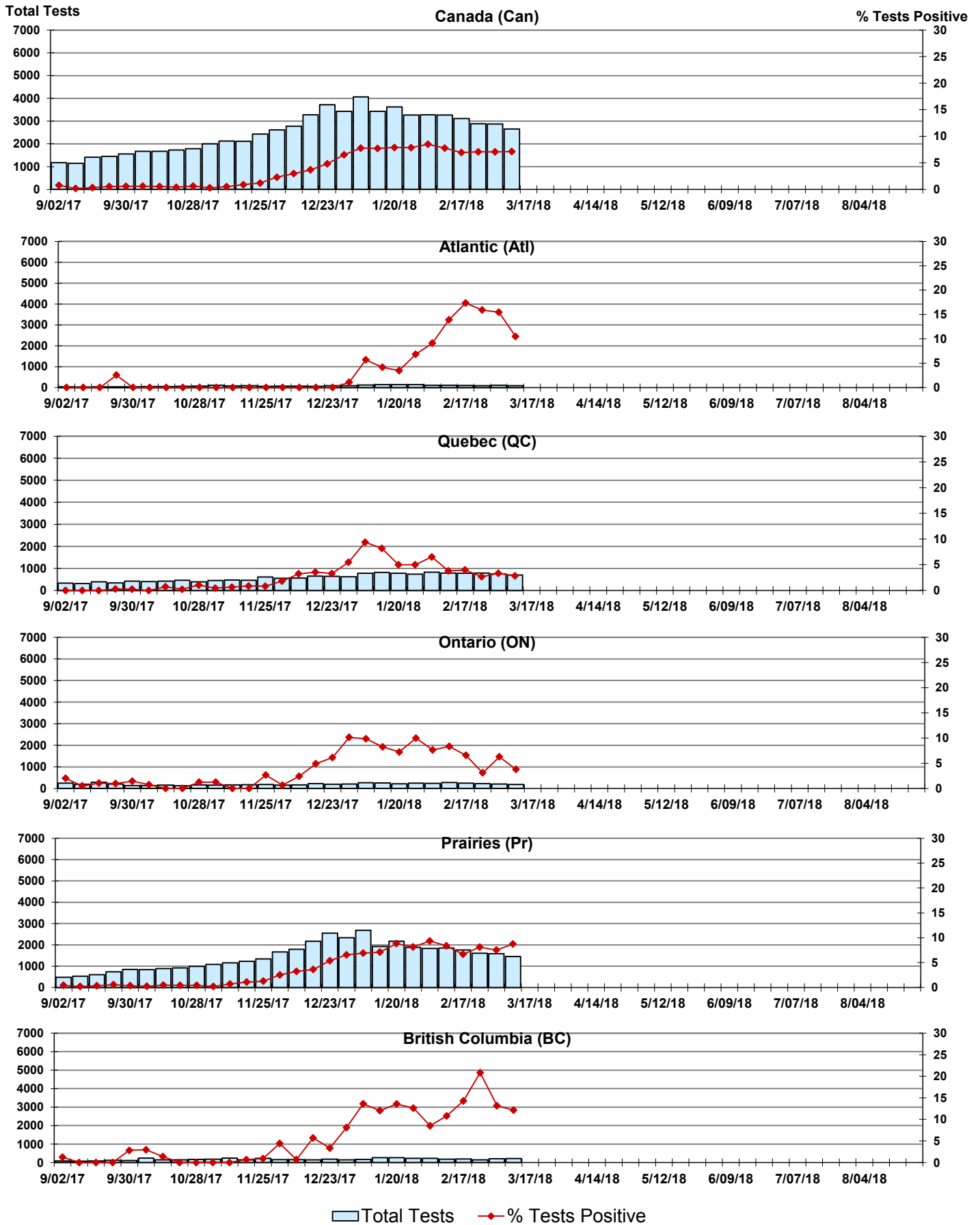


Figure 8: Positive Coronavirus (coron) Tests (%) in Canada by Region by Week of Report



Abbreviations:

A(H1N1)pdm09: Influenza A(H1N1)pdm09

A(H3): Influenza A(H3N2)

A (UnS): Influenza A (Unsubtyped)

Adeno: Adenovirus

CHEO: Children's Hospital of Eastern Ontario

Coron: Coronavirus

Entero: Enterovirus

hMPV: human metapneumovirus

HSC: Health Sciences Centre

N.A.: Not Applicable

P.H.L.: Public Health Laboratory

P.H.O.L.: Public Health Ontario Laboratory

PIV: Parainfluenza

Rhino: Rhinovirus

RSV: Respiratory syncytial virus

UHN: University Health Network

Notes:

Specimens from Yukon (YT), Northwest Territories (NT) and Nunavut (NU) are sent to reference laboratories in other provinces. Results reported for the Territories reflect the number of specimens that are identified as originating from YT, NT or NU.

Delays in the reporting of data may cause data to change retrospectively.

Due to reporting delays, the sum of weekly report totals do not add up to cumulative totals.