

Nutrition Labelling — Directory of Nutrition Symbol Specifications

Health Canada is the federal department responsible for helping the people of Canada maintain and improve their health. Health Canada is committed to improving the lives of all of Canada's people and to making this country's population among the healthiest in the world as measured by longevity, lifestyle and effective use of the public health care system.

Également disponible en français sous le titre :
Étiquetage nutritionnel — Répertoire des spécifications des symboles nutritionnels

To obtain additional information, please contact:

Health Canada
Address Locator 0900C2
Ottawa, ON K1A 0K9
Tel.: 613-957-2991
Toll free: 1-866-225-0709
Fax: 613-941-5366
TTY: 1-800-465-7735
E-mail: publications-publications@hc-sc.gc.ca

© Her Majesty the Queen in Right of Canada, as represented by the Minister of Health, 2024

Publication date: **July 2024**

This publication may be reproduced for personal or internal use only without permission provided the source is fully acknowledged.

Cat.: H164-254/2024E-PDF
ISBN: 978-0-660-71553-7
Pub.: 240085

Table of Contents

Reference Diagrams 4

TABLE 1

Unilingual Horizontal Format 5

TABLE 2

Unilingual Vertical Format..... 7

TABLE 3

Bilingual Horizontal Format 8

TABLE 4

Bilingual Vertical Format..... 10

Reference Diagrams

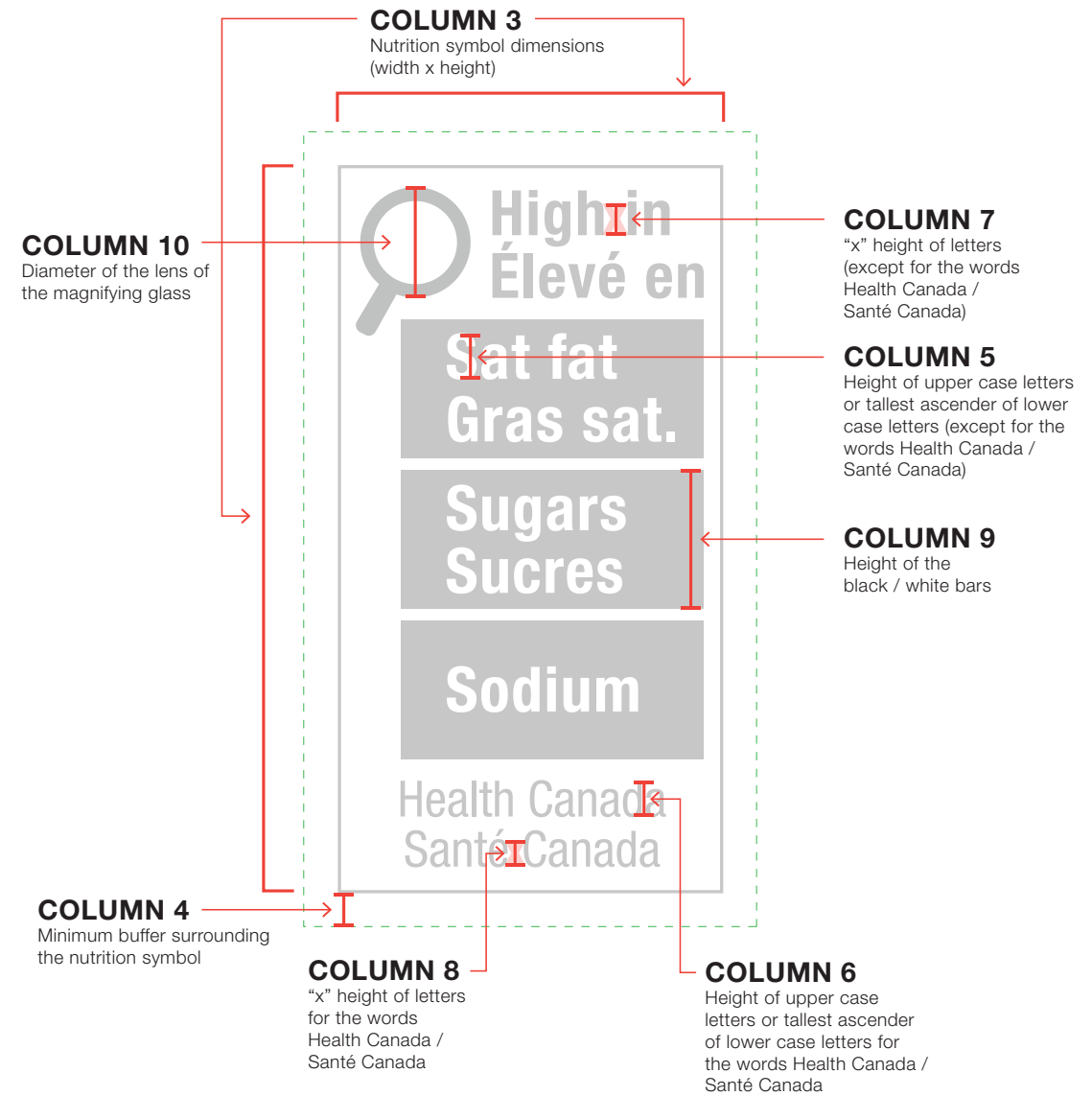
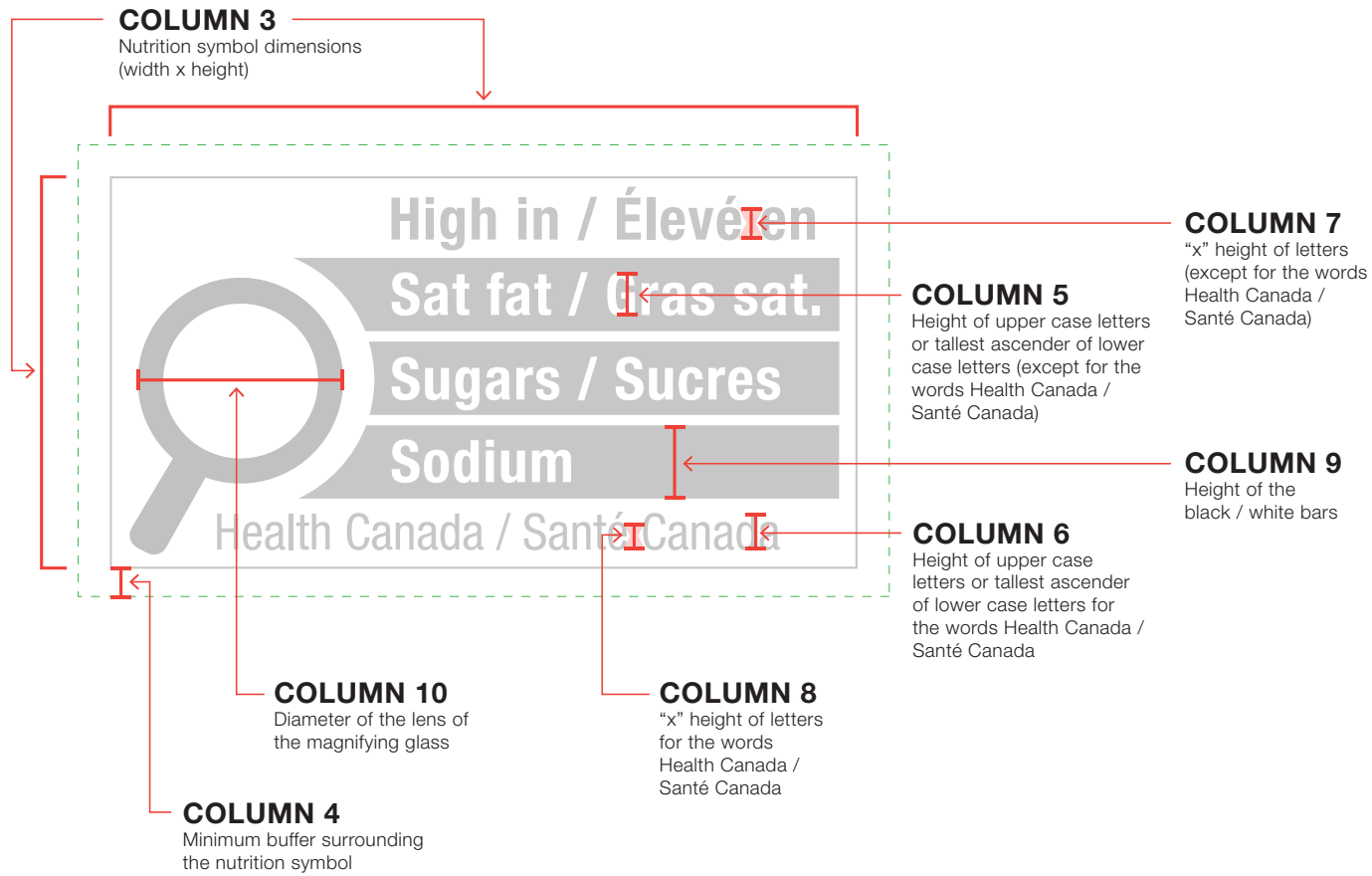


TABLE 1

Unilingual Horizontal Format

Item	COLUMN 1 Range of principal display surface	COLUMN 2 Nutrition symbol in Schedule K.1 of the <i>Food and Drug Regulations</i>	COLUMN 3 Nutrition symbol dimensions (width x height)	COLUMN 4 Minimum buffer surrounding the nutrition symbol ^a	COLUMN 5 Height of upper case letters or tallest ascender of lower case letters (except for the words Health Canada / Santé Canada)	COLUMN 6 Height of upper case letters or tallest ascender of lower case letters for the words Health Canada / Santé Canada	COLUMN 7 “x” height of letters (except for the words Health Canada / Santé Canada)	COLUMN 8 “x” height of letters for the words Health Canada / Santé Canada	COLUMN 9 Height of the black / white bars	COLUMN 10 Diameter of the lens of the magnifying glass
1	> 600 cm ²	1(EH) and 1(FH) 2(EH) and 2(FH) 3(EH) and 3(FH) 4(EH) and 4(FH) 5(EH) and 5(FH) 6(EH) and 6(FH) 7(EH) and 7(FH)	4.42 cm x 3.30 cm	2.7 mm	3.5 mm	3.0 mm	2.7 mm	2.3 mm	6.2 mm	17.3 mm
2	> 450 cm ² to ≤ 600 cm ²	1(EH) and 1(FH) 2(EH) and 2(FH) 3(EH) and 3(FH) 4(EH) and 4(FH) 5(EH) and 5(FH) 6(EH) and 6(FH) 7(EH) and 7(FH)	3.79 cm x 2.83 cm	2.3 mm	3.0 mm	2.5 mm	2.3 mm	1.9 mm	5.3 mm	14.8 mm
3	> 250 cm ² to ≤ 450 cm ²	1(EH) and 1(FH) 2(EH) and 2(FH) 3(EH) and 3(FH) 4(EH) and 4(FH) 5(EH) and 5(FH) 6(EH) and 6(FH) 7(EH) and 7(FH)	3.10 cm x 2.36 cm	1.9 mm	2.5 mm	2.0 mm	1.9 mm	1.5 mm	4.3 mm	12.1 mm
4	> 100 cm ² to ≤ 250 cm ²	1(EH) and 1(FH) 2(EH) and 2(FH) 3(EH) and 3(FH) 4(EH) and 4(FH) 5(EH) and 5(FH) 6(EH) and 6(FH) 7(EH) and 7(FH)	2.50 cm x 1.89 cm	1.5 mm	2.0 mm	1.8 mm	1.5 mm	1.3 mm	3.5 mm	9.8 mm

EH: English Horizontal
FH: French Horizontal

^a The minimum buffer zone between a nutrition symbol and a supplemented food caution identifier, or between nutrition symbols, that are labelled contiguous can be 0 mm.

TABLE 1 UNILINGUAL HORIZONTAL FORMAT

Item	COLUMN 1 Range of principal display surface	COLUMN 2 Nutrition symbol in Schedule K.1 of the <i>Food and Drug Regulations</i>	COLUMN 3 Nutrition symbol dimensions (width x height)	COLUMN 4 Minimum buffer surrounding the nutrition symbol ^a	COLUMN 5 Height of upper case letters or tallest ascender of lower case letters (except for the words Health Canada / Santé Canada)	COLUMN 6 Height of upper case letters or tallest ascender of lower case letters for the words Health Canada / Santé Canada	COLUMN 7 “x” height of letters (except for the words Health Canada / Santé Canada)	COLUMN 8 “x” height of letters for the words Health Canada / Santé Canada	COLUMN 9 Height of the black / white bars	COLUMN 10 Diameter of the lens of the magnifying glass
5	> 30 cm ² to ≤ 100 cm ²	1(EH) and 1(FH) 2(EH) and 2(FH) 3(EH) and 3(FH) 4(EH) and 4(FH) 5(EH) and 5(FH) 6(EH) and 6(FH) 7(EH) and 7(FH)	1.87 cm x 1.42 cm	1.1 mm	1.5 mm	1.5 mm	1.1 mm	1.1 mm	2.6 mm	7.3 mm
6	≤ 30 cm ²	1(EH) and 1(FH)	1.87 cm x 1.42 cm	1.1 mm	1.5 mm	1.5 mm	1.1 mm	1.1 mm	2.6 mm	7.3 mm
		8(EH) and 8(FH) 9(EH) and 9(FH) 10(EH) and 10(FH)	1.37 cm x 1.20 cm	1.1 mm	1.5 mm	1.5 mm	1.1 mm	1.1 mm	2.6 mm	2.9 mm
		11(EH) and 11(FH) 12(EH) and 12(FH) 13(EH) and 13(FH)	1.37 cm x 0.85 cm	1.1 mm	1.5 mm	1.5 mm	1.1 mm	1.1 mm	2.6 mm	2.9 mm

EH: English Horizontal
FH: French Horizontal

^a The minimum buffer zone between a nutrition symbol and a supplemented food caution identifier, or between nutrition symbols, that are labelled contiguous can be 0 mm.

TABLE 2

Unilingual Vertical Format

Item	COLUMN 1 Range of principal display surface	COLUMN 2 Nutrition symbol in Schedule K.1 of the <i>Food and Drug Regulations</i>	COLUMN 3 Nutrition symbol dimensions (width x height)	COLUMN 4 Minimum buffer surrounding the nutrition symbol ^a	COLUMN 5 Height of upper case letters or tallest ascender of lower case letters (except for the words Health Canada / Santé Canada)	COLUMN 6 Height of upper case letters or tallest ascender of lower case letters for the words Health Canada / Santé Canada	COLUMN 7 “x” height of letters (except for the words Health Canada / Santé Canada)	COLUMN 8 “x” height of letters for the words Health Canada / Santé Canada	COLUMN 9 Height of the black / white bars	COLUMN 10 Diameter of the lens of the magnifying glass
3	> 250 cm ² to ≤ 450 cm ²	1(EV) and 1(FV) 2(EV) and 2(FV) 3(EV) and 3(FV) 4(EV) and 4(FV) 5(EV) and 5(FV) 6(EV) and 6(FV) 7(EV) and 7(FV)	2.17 cm x 2.75 cm	1.9 mm	2.5 mm	2.0 mm	1.9 mm	1.5 mm	4.4 mm	6.2 mm
4	> 100 cm ² to ≤ 250 cm ²	1(EV) and 1(FV) 2(EV) and 2(FV) 3(EV) and 3(FV) 4(EV) and 4(FV) 5(EV) and 5(FV) 6(EV) and 6(FV) 7(EV) and 7(FV)	1.75 cm x 2.19 cm	1.5 mm	2.0 mm	1.8 mm	1.5 mm	1.3 mm	3.5 mm	5.0 mm
5	> 30 cm ² to ≤ 100 cm ²	1(EV) and 1(FV) 2(EV) and 2(FV) 3(EV) and 3(FV) 4(EV) and 4(FV) 5(EV) and 5(FV) 6(EV) and 6(FV) 7(EV) and 7(FV)	1.37 cm x 1.80 cm	1.1 mm	1.5 mm	1.5 mm	1.1 mm	1.1 mm	2.9 mm	3.9 mm
6	≤ 30 cm ²	1(EV) and 1(FV)	1.37 cm x 1.80 cm	1.1 mm	1.5 mm	1.5 mm	1.1 mm	1.1 mm	2.9 mm	3.9 mm
		8(EV) and 8(FV) 9(EV) and 9(FV) 10(EV) and 10(FV)	1.37 cm x 1.40 cm	1.1 mm	1.5 mm	1.5 mm	1.1 mm	1.1 mm	2.9 mm	3.3 mm
		11(EV) and 11(FV) 12(EV) and 12(FV) 13(EV) and 13(FV)	1.37 cm x 0.85 cm	1.1 mm	1.5 mm	1.5 mm	1.1 mm	1.1 mm	2.9 mm	2.9 mm

EV: English Vertical
FV: French Vertical

^a The minimum buffer zone between a nutrition symbol and a supplemented food caution identifier, or between nutrition symbols, that are labelled contiguous can be 0 mm.

TABLE 3

Bilingual Horizontal Format

Item	COLUMN 1 Range of principal display surface	COLUMN 2 Nutrition symbol in Schedule K.1 of the <i>Food and Drug Regulations</i>	COLUMN 3 Nutrition symbol dimensions (width x height)	COLUMN 4 Minimum buffer surrounding the nutrition symbol ^a	COLUMN 5 Height of upper case letters or tallest ascender of lower case letters (except for the words Health Canada / Santé Canada)	COLUMN 6 Height of upper case letters or tallest ascender of lower case letters for the words Health Canada / Santé Canada	COLUMN 7 “x” height of letters (except for the words Health Canada / Santé Canada)	COLUMN 8 “x” height of letters for the words Health Canada / Santé Canada	COLUMN 9 Height of the black / white bars	COLUMN 10 Diameter of the lens of the magnifying glass
1	> 600 cm ²	1(BH) 2(BH) 3(BH) 4(BH) 5(BH) 6(BH) 7(BH)	6.29 cm x 3.30 cm	2.7 mm	3.5 mm	3.0 mm	2.7 mm	2.3 mm	6.2 mm	17.3 mm
2	> 450 cm ² to ≤ 600 cm ²	1(BH) 2(BH) 3(BH) 4(BH) 5(BH) 6(BH) 7(BH)	5.40 cm x 2.83 cm	2.3 mm	3.0 mm	2.5 mm	2.3 mm	1.9 mm	5.3 mm	14.8 mm
3	> 250 cm ² to ≤ 450 cm ²	1(BH) 2(BH) 3(BH) 4(BH) 5(BH) 6(BH) 7(BH)	4.50 cm x 2.36 cm	1.9 mm	2.5 mm	2.0 mm	1.9 mm	1.5 mm	4.3 mm	12.4 mm
4	> 100 cm ² to ≤ 250 cm ²	1(BH) 2(BH) 3(BH) 4(BH) 5(BH) 6(BH) 7(BH)	3.60 cm x 1.89 cm	1.5 mm	2.0 mm	1.8 mm	1.5 mm	1.3 mm	3.5 mm	9.9 mm

BH: Bilingual Horizontal

^a The minimum buffer zone between a nutrition symbol and a supplemented food caution identifier, or between nutrition symbols, that are labelled contiguous can be 0 mm.

TABLE 3 BILINGUAL HORIZONTAL FORMAT

Item	COLUMN 1 Range of principal display surface	COLUMN 2 Nutrition symbol in Schedule K.1 of the <i>Food and Drug Regulations</i>	COLUMN 3 Nutrition symbol dimensions (width x height)	COLUMN 4 Minimum buffer surrounding the nutrition symbol ^a	COLUMN 5 Height of upper case letters or tallest ascender of lower case letters (except for the words Health Canada / Santé Canada)	COLUMN 6 Height of upper case letters or tallest ascender of lower case letters for the words Health Canada / Santé Canada	COLUMN 7 “x” height of letters (except for the words Health Canada / Santé Canada)	COLUMN 8 “x” height of letters for the words Health Canada / Santé Canada	COLUMN 9 Height of the black / white bars	COLUMN 10 Diameter of the lens of the magnifying glass
5	> 30 cm ² to ≤ 100 cm ²	1(BH) 2(BH) 3(BH) 4(BH) 5(BH) 6(BH) 7(BH)	2.80 cm x 1.42 cm	1.1 mm	1.5 mm	1.5 mm	1.1 mm	1.1 mm	2.6 mm	7.4 mm
6	≤ 30 cm ²	1(BH)	2.80 cm x 1.42 cm	1.1 mm	1.5 mm	1.5 mm	1.1 mm	1.1 mm	2.6 mm	7.4 mm
		8(BH) 9(BH) 10(BH)	2.50 cm x 1.20 cm	1.1 mm	1.5 mm	1.5 mm	1.1 mm	1.1 mm	2.6 mm	4.2 mm
		11(BH) 12(BH) 13(BH)	2.50 cm x 0.85 cm	1.1 mm	1.5 mm	1.5 mm	1.1 mm	1.1 mm	2.6 mm	3.9 mm

BH: Bilingual Horizontal

^a The minimum buffer zone between a nutrition symbol and a supplemented food caution identifier, or between nutrition symbols, that are labelled contiguous can be 0 mm.

TABLE 4 Bilingual Vertical Format

Item	COLUMN 1 Range of principal display surface	COLUMN 2 Nutrition symbol in Schedule K.1 of the <i>Food and Drug Regulations</i>	COLUMN 3 Nutrition symbol dimensions (width x height)	COLUMN 4 Minimum buffer surrounding the nutrition symbol ^a	COLUMN 5 Height of upper case letters or tallest ascender of lower case letters (except for the words Health Canada / Santé Canada)	COLUMN 6 Height of upper case letters or tallest ascender of lower case letters for the words Health Canada / Santé Canada	COLUMN 7 “x” height of letters (except for the words Health Canada / Santé Canada)	COLUMN 8 “x” height of letters for the words Health Canada / Santé Canada	COLUMN 9 Height of the black / white bars	COLUMN 10 Diameter of the lens of the magnifying glass
3	> 250 cm ² to ≤ 450 cm ²	1(BV) 2(BV) 3(BV) 4(BV) 5(BV) 6(BV) 7(BV)	2.17 cm x 4.10 cm	1.9 mm	2.5 mm	2.0 mm	1.9 mm	1.5 mm	7.8 mm	6.2 mm
4	> 100 cm ² to ≤ 250 cm ²	1(BV) 2(BV) 3(BV) 4(BV) 5(BV) 6(BV) 7(BV)	1.75 cm x 3.31 cm	1.5 mm	2.0 mm	1.8 mm	1.5 mm	1.3 mm	6.3 mm	5.0 mm
5	> 30 cm ² to ≤ 100 cm ²	1(BV) 2(BV) 3(BV) 4(BV) 5(BV) 6(BV) 7(BV)	1.37 cm x 2.60 cm	1.1 mm	1.5 mm	1.5 mm	1.1 mm	1.1 mm	4.9 mm	3.9 mm
6	≤ 30 cm ²	1(BV)	1.37 cm x 2.60 cm	1.1 mm	1.5 mm	1.5 mm	1.1 mm	1.1 mm	4.9 mm	3.9 mm
		8(BV) 9(BV) 10(BV)	1.37 cm x 2.05 cm	1.1 mm	1.5 mm	1.5 mm	1.1 mm	1.1 mm	4.9 mm	3.3 mm
		11(BV) 12(BV) 13(BV)	1.37 cm x 1.50 cm	1.1 mm	1.5 mm	1.5 mm	1.1 mm	1.1 mm	4.9 mm	3.3 mm

BV: Bilingual Vertical

^a The minimum buffer zone between a nutrition symbol and a supplemented food caution identifier, or between nutrition symbols, that are labelled contiguous can be 0 mm.