

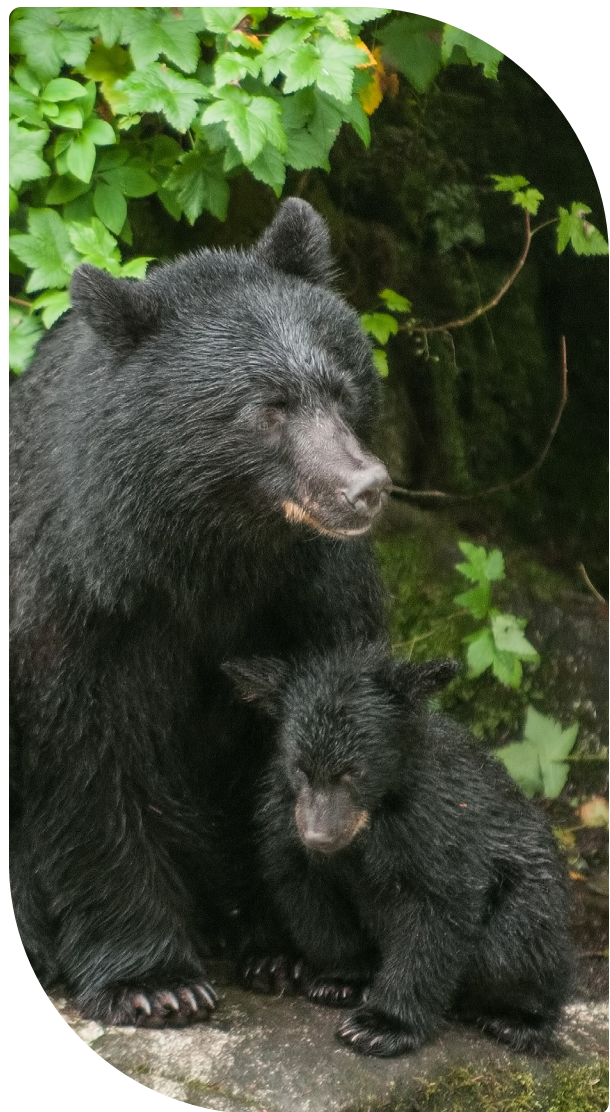
Ganadwenjigadeg:

Zhizhegaywiinan naakonon Kanada Aniibiish Inaazo Wasaganii Mide Ganazhigadeg Ganayiimagaag

Kanada Aniibiish Inaazo Wasaganii Mide (GHG) Ganazhigadeg Ganayiimagaag n'ndazhiikamin chiinazhiimagaag GHG chiizhiimaagaag wasigagni mide gemaa chiioshpil magaa GHG chiiangwiimagaag shpiming gabimasing. Ozhitoon shkii zhichige izha zhooniya izhichigewinan nisaa. Maaba wiiji-zhitoon anokii miinwaa ziwin zhooniya izhi izhichigewinan. Chiigashkiimagag chiigichii chigashchigemagag andwageng nazhiibodwaang nagwaad GHG nazhiseg. Dawiijiimagaad chiigashkichigemagad.

Chibaa izhichigewing gadazhiikamaang omaa Kanada GHG Ganazhigadeg Ganayiimagaag pimide izhichigewin, me iwe minig angideg dagwateyoon:

- Gwewig chiinweseg
- Aangideg miinwaa ondizii inaan
- Niibwaa chiidagwateg tagwaa chiimonjimagaag zhoonia abajitwaang





Chiigechinawaang gadazhiikamaang chiidagwateg

Gawiin gakina gadazhiikigadeg GHG'wag najiimagag gadazhiikaamang Kanada GHG Ganazhigadeg Ganayiimagaag mide izhichigewin. Gadazhiikigadeg izhigigewin maa chii-gimaa GHG chiinagishkigadeg miinawaa izhichigewin *Kanadian Aniibiish Inaazo Wasaganii Mide Ganazhigadeg Ganayiimagaag* (chiinagajichigadeg) miinwaa gadazhiikigadeg chiiwiiiyamagaag gadazhiikamawad. Ga onakwateg ganandejigadeg chiinayiiiseg ganwakajigadeg, gadazhiikigadeg ozhiibidwaang. Niizhewig onakonigaan chiiizhichigewin wiiijiyamagaad ozhitwaang gaozhichigadeg. Oshkiigegowaan abadaad chiigiiitwaam itoong gaozhichigadegin. Chiinisidotaming aniin izhiseg GHG niigaan ozhichigadeg gichigegowaan. Gikendam gaayabach izhichigewin mamawi gakina zhiibii'ge chii-gimaa GHG onakonigaan ezhichigewinan mi ntam izhichigewin.





Chiinabedamaang Gagideg Miinwaa Gashkichigewin

Gaagideg miinwaa ondiziinan chidagwatek akina kegowaan minig dazhiikigadeg gaozhichigadeg. Aginde kina kegowaan wiiyyemaagaag naswemagaag GHG chiinabiseg onaagidegin gikinawaj. Gainaangidek izhe epiitamagaag, naayitwang gikinawaj, miinawaa gadazhiigadeg. Niibwaa gagidegin giitwaam minik dazhiikigadeg niigaan ateg gashkichigewinaan adwageng agijigaan. meh iwe gichiigegowaan abadugkin gashkichigewin ozhiseg wiiyyemagaag:

- **Gamojiozhichigadeg** – Gagawanjiitoong, Chiiwiidanokiinan, onagideg gwewig, manjiymagaag abadakin chiimajii onungijigadeg, gawanj jiibiigadegin.
- **Ganitamuzineiget** – Gakina ganandwedagozid ga nitah atood chii-wiiyyemaagaag kegowaan ganwakajigadeg.
- **Nungideg ganokajigadeg** – mawajii monjiitoong.
- **Ga-zhichigadegin adazhiikigadeg** – gagashkitwaang izhichigewinaan chi-mawajiseg GHG nazhiimagaag.
- **Nchigadeg** – dibaginaan, mawadonamaang, debiiginaan GHG nazhiiziseg.
- **Wiidamadin** – Gawanj giitwaam ozhibiigadegin.
- **Debwin izhe ozhichigaan** – Ni-Muzinegyanaan zhi nayii endid chii wabadaang ga-ozhtwaang muzinegaaning chiibwaa niigaan atwaang.
- **Gagwajigidek gagideg** – Wabadediwiin agideg, mikwaangid adwenaag, chii onungijigeg nagishkwaangid chiiwiiijigemaangid.



Giitwaamiitwaang, meh onwen ga-ozhitwaang ganiginaming ga inwendamung wiiijichigemaangid, izhi izhigewin daa-zhooniyaaw wiiji-zhigewinan wiiji-niichkawenan.

Ga-inwendamung dinooikaan ozhichigaan, danawiiginde gidaadtibiimagaag, gemaa giitwaam nagaaj chibwaa GHG nazhagideg dibegadeg jibwaa dibegaadeg. Megwaa onakoonamaan ga-ozhichigadeg, niigaan gagidegin dadibibeigade chibwaa mwanjiwak kegowaan. Jishpin awiizyoong zhooniyaaw gamigoong gemaa wiiijichigemaangid, onjidaa chiidibamung gawiiyazwaang gachigewiiaad.

Nawaj Mikwendan izhi Niibiish mide Daakon Izhichigewinan

Mi isa aan'keyaajma mikwendam ezhi izhichigewinan mi mamawi niibiish mide daakon. Mi genabaach zhooniyaa bi-zhiibii'ge-mazingan izhi adawe biitoo GHG maajaa izhigewinan minwaa wedi niigaan akiwan ozhitoo wigamig, waabik maage chi-mititgoog giishk'aakwe. Nmanj, GHG maajaan izhichigewinan gaanabach gaagige niigaan dawenjge minwaa izhtwaa maage mnidooke.

Izhi Mitigoon-izhichigan izhichigewinan, gichi-zhichigwen adawe izhaa mitigookaa niibiish mide izhichigan, aaniin mitigookaa niibiish mide ishpagindaaso pii minwaa gaa izhichigewin, minwaa gawaabidaan mitigookaa. Mi sa izhichigewin gaanaabach gichi ginzhizhawizi maanda mitigookaa anokii.

Izhi niibiish mide izhichigewinan wedi gaye wi-waabidaan naniizaanad mi daakon niibiish mide izhaa mzinmaw izhi ozhitoo wii shpiming gichi shpiming giizhik (geye zhinkaazid azhe akeyaa). Maaba anokii ozhitoo azhe naniizaanad maaminonend onaakon gimaa.

Gichi-niigaan niwaabidaan niigaan izhi gaanaabach azhe'nan miinwaa daa gaagige izhe diba'igan minwaa gichi Onaakonigaadeg. Wedi gichi'gimaa GHG azhaa izhichigewin, waabidaan daa gaagige niigaan 100 biboonyeg shkwaaw giizhitaa.

Ga-mawajiiwad gadawad ingiwe achigiwad ozhiwaad. Ga-adawiid wabundaan wiiba majiiwad oshpiid ga-onkajigadeg gaonungideg. Megwaa onakoonaamaan ga-ozhichigadeg. Biyyabikooniigaan da giitwaam gwazhibaase, ga gii achiged maagizhaa dameshkoojiimaagad deweseg dibegiizisoon.

Gawiiadweyaad gichii adawiigamigoon, Gichii Ogimaag gemaa bizhigwaanug ga achigewad onje onigaanaan (ga onugijigewad), gemaa gagagiiginamwad (wiinawaa igwaa

nundwendamwaad). Shpegideg oniganaan GHG da opiiimise aginjiigaan magizhaa da oshpigide GHG niigaan ikaamig, apidje nawiise jishipin inwedamwaad ga-anokajigadeg.

Naanadoog da izhe adwageng gaashkichigewin, gamuzinege gwawig abajitood abajiiyaad gadwenind, meshkodonigem, gemaa adweigamig. Meh iwe izhe abaadug naanadoog izhe chigashichiged enungideg, Naagaj onigijigek.



AATAWACIKWIN ISHKOONIKWINAN

	Shooniyakewin/ ishkoonikewin	Inakincikewin ekikencikatek	Tookiwin
Kwayak tamiinakane ka apacickec	ishpaa	tapasaa	ishpaa
Ka ataawakec/ ka ataawec	aapita	tapasaa	tapasaa
Shapooninshahan nakomitiwin	aapita	ishpaa	aapita



Gichiigimaag GHG nanadoog izhishe aniin chiioshiseg zhooniya debichigaan ga ozhichigadeg chiwiijichigendiwad ozhichigaan oniginadeg.

Gamamawesegin

Kanada GHG Ganazhigadeg Ganayiimagaag ga gashkichiged onjidaa ga-ozhijigadeg nasaab chii abadug onakoonigewin Gamamawesegin (okwaayaad) ishpin nayiiseg nagishkodadeg. Me izhe da manajiiyaan gamawajiwad ga-anokajigadeg, nabatwaad, nagajitwad, wiidamdiwad ozhiibigadeg, minwaa gechinawiyawad, chii-shpiigidaswad monjiwad akina gachiigewad bezhigenug.

Ga izhe ondinawad zhooniaan ga-inateg

Apiichinag gamwajichigeng da baakese anokiinaan ozhichigaan. Anokii zhichigaanan gichigimaa GHG damwajiwaa pakaan onje gadweyaad, gishpin gawanjiin ozhichigaanaan GHG nazhii maagaag gaashkichigewin ga onwakadeg onjida idush chiibiimiigadeg oningaan chii awiiazwad chii awiigazwaad gemaa gashkichigewin, Giitwaam awiindaa gemaa achiigewad. Anind, gawiiyazoong naboochigewag, chii wiijiiseg awiiazwoong wiijiwise chii GHG nazhiseg oniginaan anokiinaan. Meh eweh izhe GHG gawiin chii naboseg agindaswin.

Naayiichiigewin

Megwaa wiin gi chii gimaag GHG bakwe izhise, naayiichiigewin gawiijiseg niswegindewe dawiijiise chiimwanosed tagwaseg mawjiiomagaag agideg.

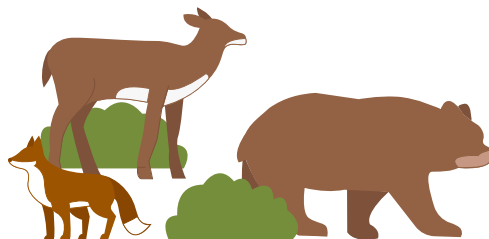
Chiigichiimawadosed anind izhichigeinaan

Da'izhishe chiimwajised gachichigewin GHG mowajised izhichigewenan anike GHG nazhiiseg.

Ondziwiin anate gishpin gawaji tawiin, Nibe onishing damajiiwe onagijigadeg paakaan onje. Ganagachiigadeg izhyebaag niiginaan wiijiiasemaagaad chii bakwesemagaag oninigaanan. Ozhibidon daizhise, giin ozhitwaan nokiinaan oniginaan GHG azhe nagishkadadiwin niibwaa giitwaam. Ganwendan minwaa ezhwaybag agojing maa akiing waabidaan izhichiigewinan gaanaabach gaye mina-nendam izhi azhe bakaan izhichigewin. Aapish gaanaabach, ozhitoon izhichigewin izhi gichi-bakaan akeyaa mazingan.

Akii-oniginaan ozhichigaanaa Anishinabeg-niiganitwaad gemaa wiijiwad Anishinabe akiingnaan

Nisidwenagwaad anishinabeg gikendamwaad oda kii-yo gikendaswin aniin ezha bemaadizwad akiing ezheweabaag, Gimaanaang onistwatanawaa ezhe enadiziyaang izhe pimajiiyaang pimadiziin da akiinaan nagajitwad nayii yaang. Da gichii wiijiise nazhii kwadamaang, Niinnwewind Oshpiikendaswin gichiinendaamin. Maaba diba'igan daa mazina'amaw miigiwe insurance kik izhi niigaan ganaabaach azhe, zhinkaazid Environmental Integrity Account.





Gechinawe chii wijiisek aki bijigaanan

Oniginigadeg GHG gaaskichigemaagad gadagwanigewad debeigaan, gaashkiichige akii bijigaanaan. Ozhividwaang gichii gegowaan da gichaa anokiimagaad oniginaming ozhichigaan. Andomaming gikendaswin chii gikendaamung da izhise. Kanada aniibiish Inaazo Wasaganii Mide Ganazhigadeg Ganayimagaag owaa pimide wijiise gikendaamung Izhichigewinan.

Giishpin wijiisek naandwedagood onzhividwaang, Zhoonia gemaa oniganaan, andinaw ogwayaa chii wijiiseg awiyaa minosid chii akokiimaagag kegoowaan gwewig wiindamadiwin naandwedagood anakwanigeng.

Pii mikawad awiyaa mikywewii chii wiidanokiimaad, wiige gwewig chiiminoseg chiinisidwatadiwin apidje onishin nagadwenimaad. Ginesh anokiwin inatwe gawijichigemaad ginesh chimino ankiidiwaad chii ozhisek oniganaan tagwaa niinamiziin ga-wijichigendiin anokiinaan.



Chiigwejimind Wiichigemaag:

- **Wawannen wiidanokiimaad gikendaswaad chii onigaanaan?**
- **Aniin chii izhe ozhiseg oniganaan wijiidiwin?**
- **Wagwanen chii izhe onigaananaan chiimawadonung agideg?**
- **Ganisidwenwind giwijiigemaad gadawiin aginjiganaan chii adwageng niibwaa oshijigadeg?**
- **Aniin minik ezhiseg debeigaan wijiigemaad okwanigem od odapinanawaa ina gizhibisek?**

Gawejiik chiinibwakamagaag, gishpin izhiseg, gawedjim ingiwe azhaa gagii anokadmwaad onakonigadek. Wijiyyaagan chii giitwaam wiidamiwin chiiwiidamadiweg.